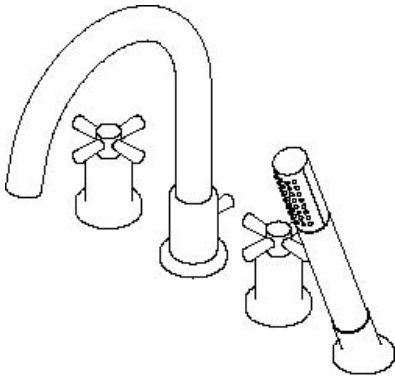


s c h ö n
brass works

RT300 **ROMAN TUB & SHOWER FAUCET**



RT300

Product Features

6-12" Adjustable centers

Flow Rate

Faucet 4.0 GPM @ 20 PSI minimum flow rate

Showerhead 2.5GPM @ 80 PSI maximum flow rate

Brass valve body

Ceramic Cartridges

Braided Stainless Steel Connector hoses

Metal Cross Handle

Standards/Approvals

RT300 meets or exceeds:

ANSI/ASME A112.18.1

IAPMO/UPC

Massachusetts

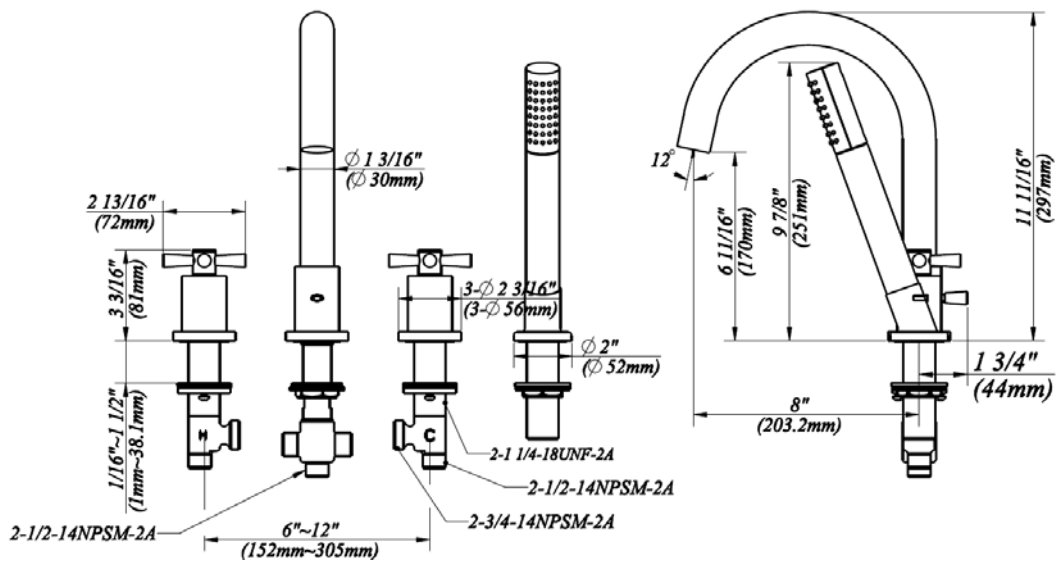
UPC®

PRODUCT SPECIFICATION:

Roman Tub & Shower faucet shall have a brass body, ceramic cartridge, 8" spout and metal cross handle. Product shall be able to be installed 6" to 12" centers applications. Product shall be schön brass works model RT300.

s c h ö n
brass works

RT300
ROMAN TUB & SHOWER FAUCET



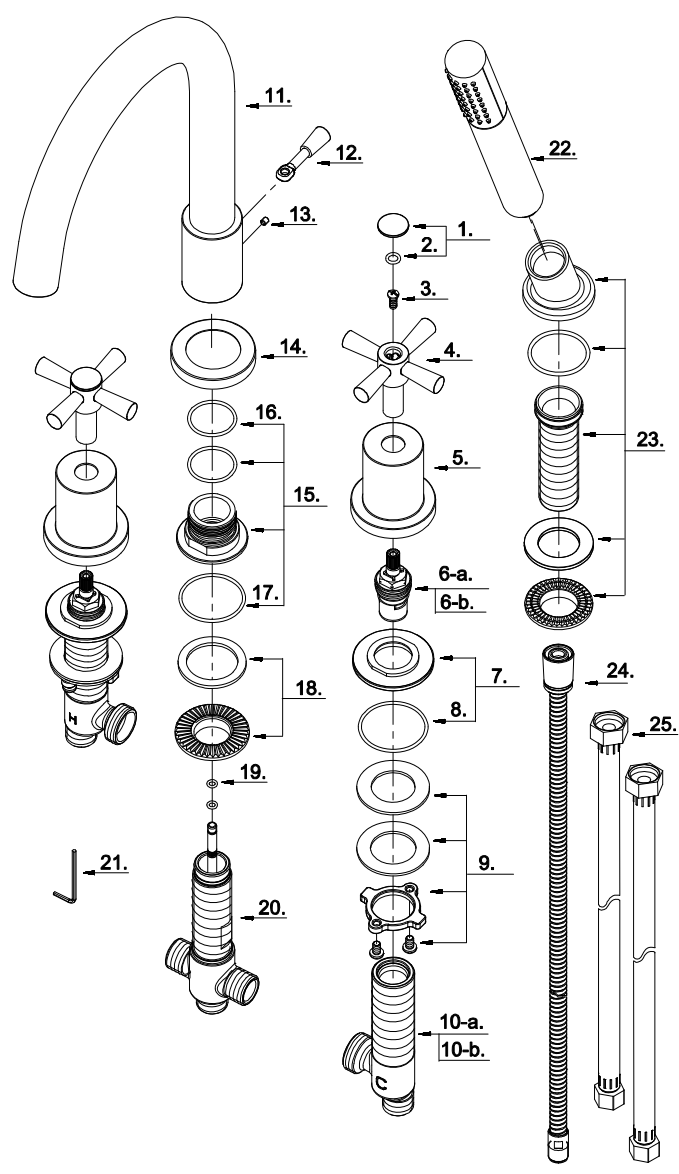
Other Specifications

Faucet Hole diameter	1-1/2"
Max Deck Thickness	1-1/2"

Available Finishes

- Chrome
- Satin Nickel

PARTS BREAKDOWN



PARTS LISTING

NO	Part Name	Part Number	Q'ty
1	Handle Cap	A66D422xx	2
2	O-Ring(Φ1/4" ID * Φ3/8" OD)	A048089	2
3	Screw (3/16" -24 * 7/16" L)	A008283xx	2
4	Metal Handle	A662572xx	2
5	Handle Base	A018073	2
6-a	Ceramic Disc Cartridge-Cold	A507376N	1
6-b	Ceramic Disc Cartridge-Hot	A507375N	1
7	Handle Trim Ring	A66D423	2
8	O-Ring (Φ1-5/8" ID * Φ1-13/16" OD)	A072032N	2
9	Mounting Hardware	A66D424xx	2
10-a	Handle Valve Body -Cold	A002544Cxx	1
10-b	Handle Valve Body -Hot	A002544H	1
11	Spout	A139720	1
12	Lift Rod	A66D448	1
13	Screw (M4 * 5 mm L)	A008191	1
14	Spout Trim Ring	A071342xx	1
15	Adaptor Assembly	A66D449	1
16	O-Ring (Φ1-1/16" ID * Φ1-1/4" OD)	A072048N	2
17	O-Ring (Φ1-9/16" ID * Φ1-11/16" OD)	A004107	1
18	Mounting Hardware	A66D450	1
19	O-Ring (Φ1/8" ID * Φ1/4" OD)	A004559N	2
20	Spout Valve Body	A501371	1
21	Hex Wrench(H2 * 17 mm L * 49 mm L)	A031003	1
22	Hand Shower W/Check Valve	S2211195xx	1
23	Spray Holder Assembly (3-3/4"L)	A604627xx	1
24	Shower Hose	A134036xx	1
25	Supply Hose	A105137	1

xx designates finish matched parts.