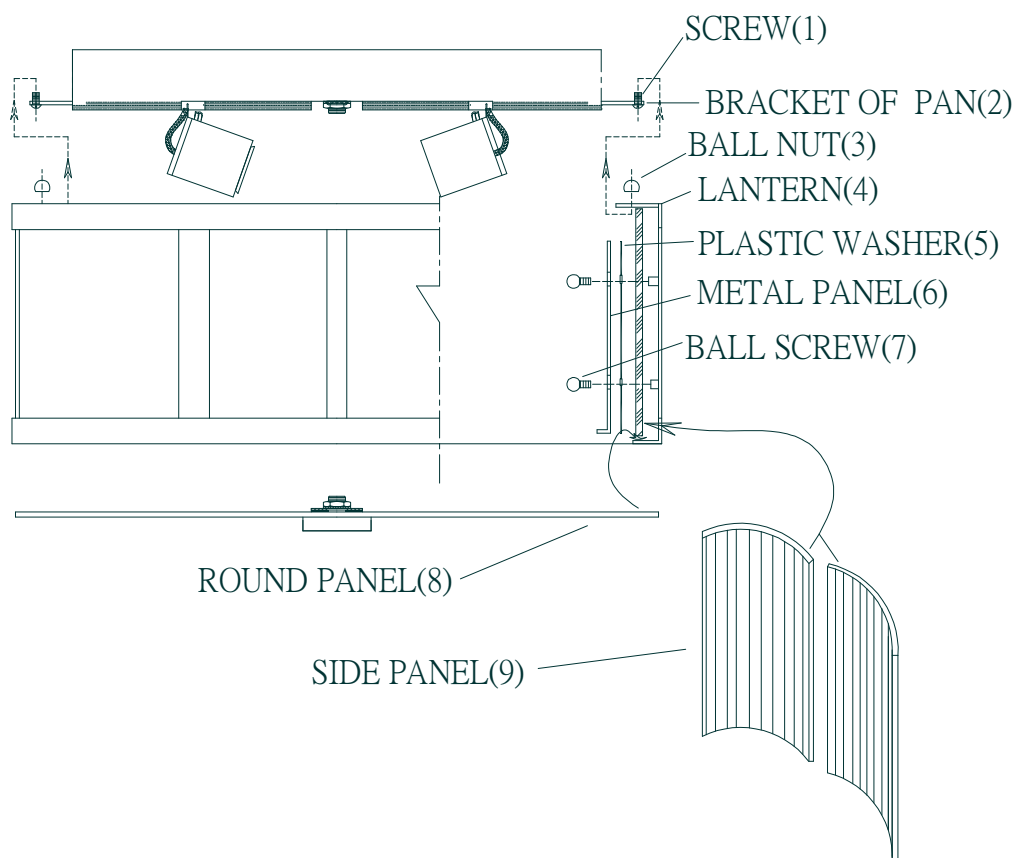




ITEM NO:6-6800-15-11

LIGHTING



INSTALLATION INSTRUCTIONS

1. Carefully remove the fixture out of the carton, and check that all parts are included referring to the above illustration. Make sure not to misplace any parts that are needed for the installation;
2. Install the round panel(8) onto bottom side of the lantern(4);
3. Thread ball screw(7) through hole of the metal panel(6) and plastic washer(5), then slide them onto center of the two pcs side panel(9), the last thread ball screw(7) into well of the lantern(4);
4. Install the bulbs (not supplied) onto socket;
5. Install the clip of the lantern(4) onto screw(1) of the bracket of pan(2) using ball nut(3) on;
6. The fixture is assembled!