

RECESSED LIGHTING ROUGH-IN PLATE KIT

Model: 80-962,80-963,80-964,80-965,80-966



INSTALLATION AND SAFETY INSTRUCTIONS

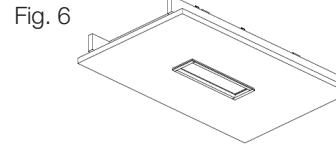
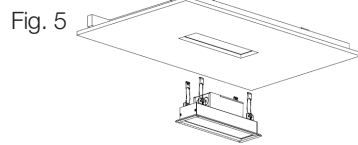
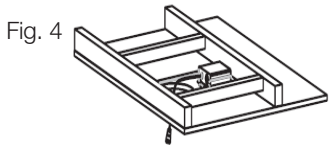
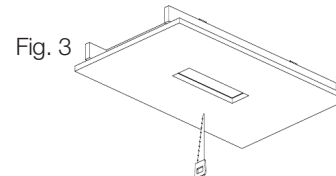
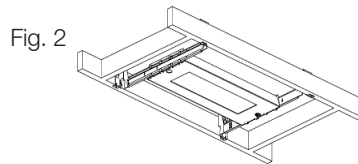
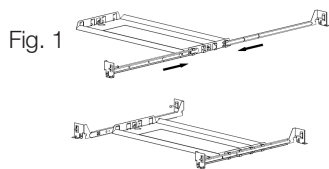
IMPORTANT: Read before installing fixture. Retain for future reference.

Model#	Rough-in Plate Dim.	Fixture Dim.	Compatible Satco Products
80-962	3.15"x3.15" Square	12"	S11720
80-963	17.12"x3.15" Square	18"	S11721
80-964	23.03"x3.15" Square	24"	S11722
80-965	30.91"x3.15" Square	32"	S11723
80-966	46.65"x3.15" Square	48"	S11724

NEW CONSTRUCTION PLATE DRYWALL INSTALLATION – A

New Construction plate for stud/joist mounting, fits up to 24" studs/joist spacing.

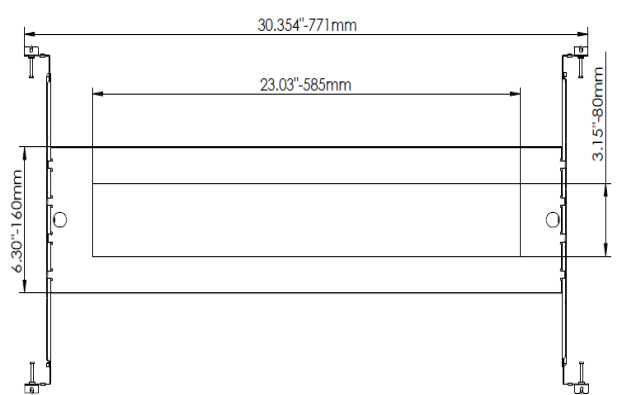
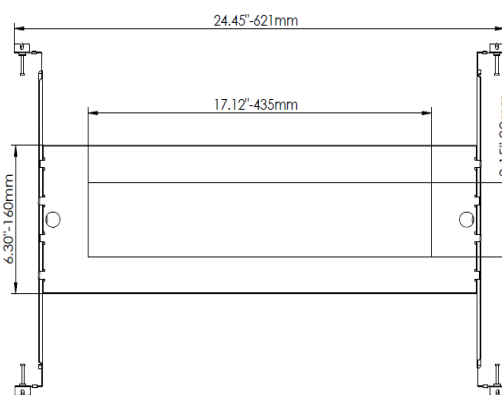
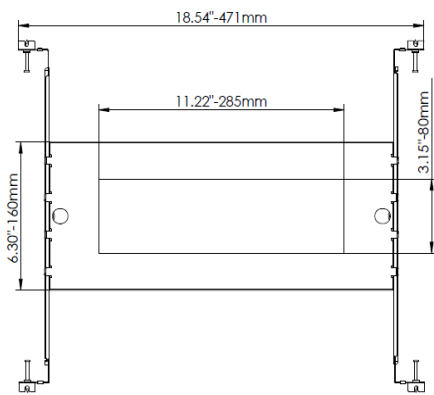
1. Install the brackets to two short sides of plate. See Figure 1.
2. Nail or screw brackets to studs/joist. See Figure 2.
3. Make appropriate wiring connections as required, follow downlight instructions to complete installation. See Figures 4, 5.



Model 80-962

Model 80-963

Model 80-964



Model 80-965

Model 80-966

