



Serpentine cabinet shape.



Raised moldings.



Floral carved pilasters.



Raised on carved feet and base.



Central carved shell motif.



Dramatic carved mirror crown.

BARRISTER

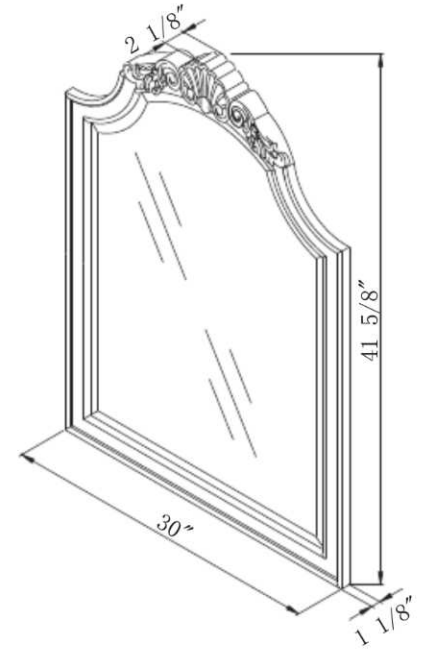


Sagehill Design believes that every bath should have a wonderfully distinctive decor that sets it apart from the ordinary. The Barrister Collection will help you accomplish such a task with drama and flair.

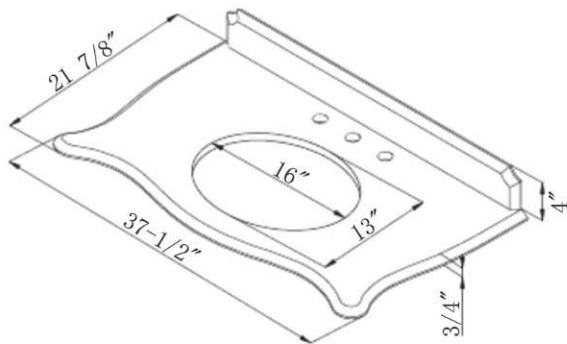
For Style, Quality, and Value - Think Sagehill !

Features Include:

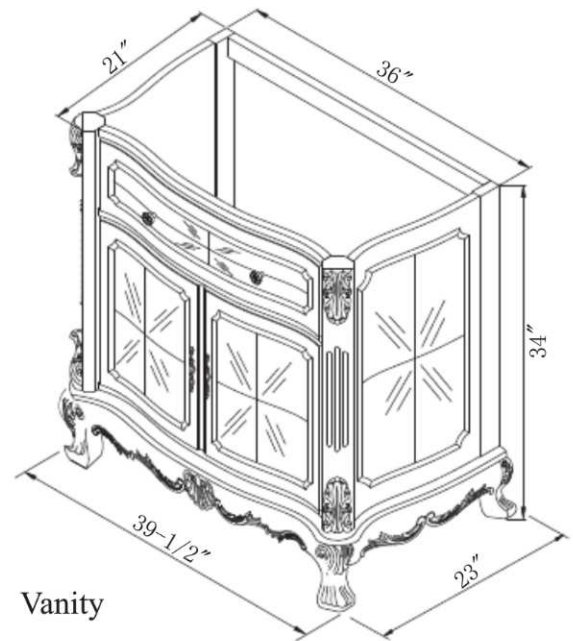
- * Serpentine cabinet design
- * Base apron rails feature foliated carvings and stylized paw feet
- * Matched veneer doors and side panels with raised decorative molding
- * Antiqued brass finish hardware
- * Canted pilasters with floral carvings and raised reed details
- * Matching shaped and beaded mirror frame features carved shell motif with beveled glass



BR3042MR Mirror



BR3722-UTG Granite Top



BR3621 Vanity

Sagehill believes that every bath should have a wonderfully distinctive decor that sets it apart from the ordinary. The Barrister Collection will help you accomplish such a task.

Crafted to honor traditional furniture making techniques, the collection features dramatic serpentine cabinet design, patterned mahogany veneers, raised bead moldings, dramatic floral and shell carvings, all raised on carved cabriole feet. These timeless features are full of movement and drama.

This is truly a fine addition to any bath of distinction, complemented with a matching carved portrait mirror.

Like every Sagehill Collection, attention to detail and craftsmanship create a virtual heirloom. Set your bath apart from the norm with the Barrister Collection.

Sagehill Designs

A division of
Sunny Wood Company



Note: Printed finish representations are for general reference only.
Contact your dealer to view actual finish samples.
Copyright 2007: Sagehill Designs. All rights reserved.