



Thermostatic Shower - Non Volume Controlled Valve

Michael Berman Bath Collection

MB1940LM (Metal Lever - Trim Only)

MB1940XM (Cross Handle - Trim Only)

FEATURES

MB1940 - Trim Only

- Trim plate, escutcheon, and handle to thermostatic valve
- Integrated preset temperature stop
- Components made of brass
- Lever handle
- Temperature control only
- Min/Max dimensions on A4913B0 spec. sheet
- Extension kit C7913 set

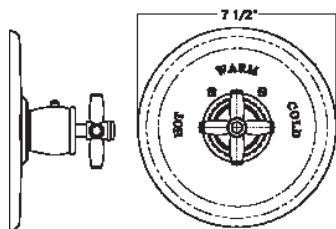
COLORS/FINISHES - TRIM ONLY

- Polished Chrome
- Polished Nickel
- Satin Nickel
- Tuscan Brass
- Inca Brass

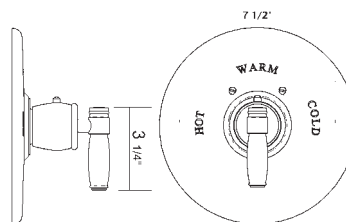
WARRANTY

- Limited Lifetime*
- * No Warranty on Tuscan Brass Finish (TCB)

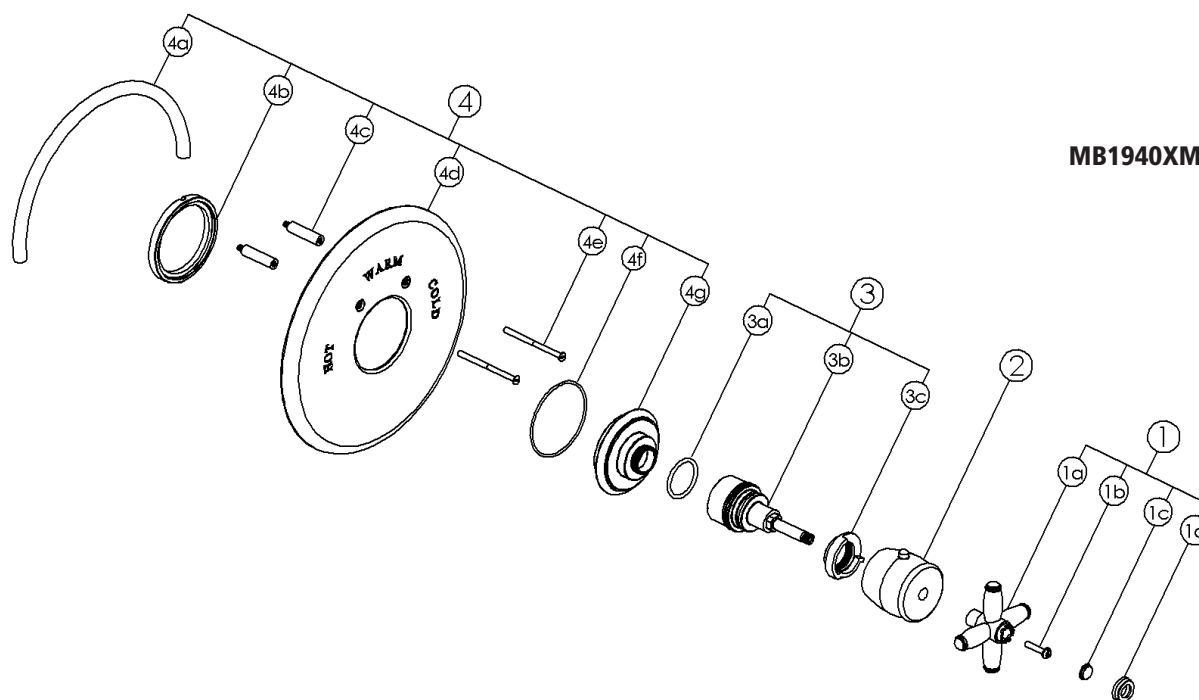
MB1940XM



MB1940LM



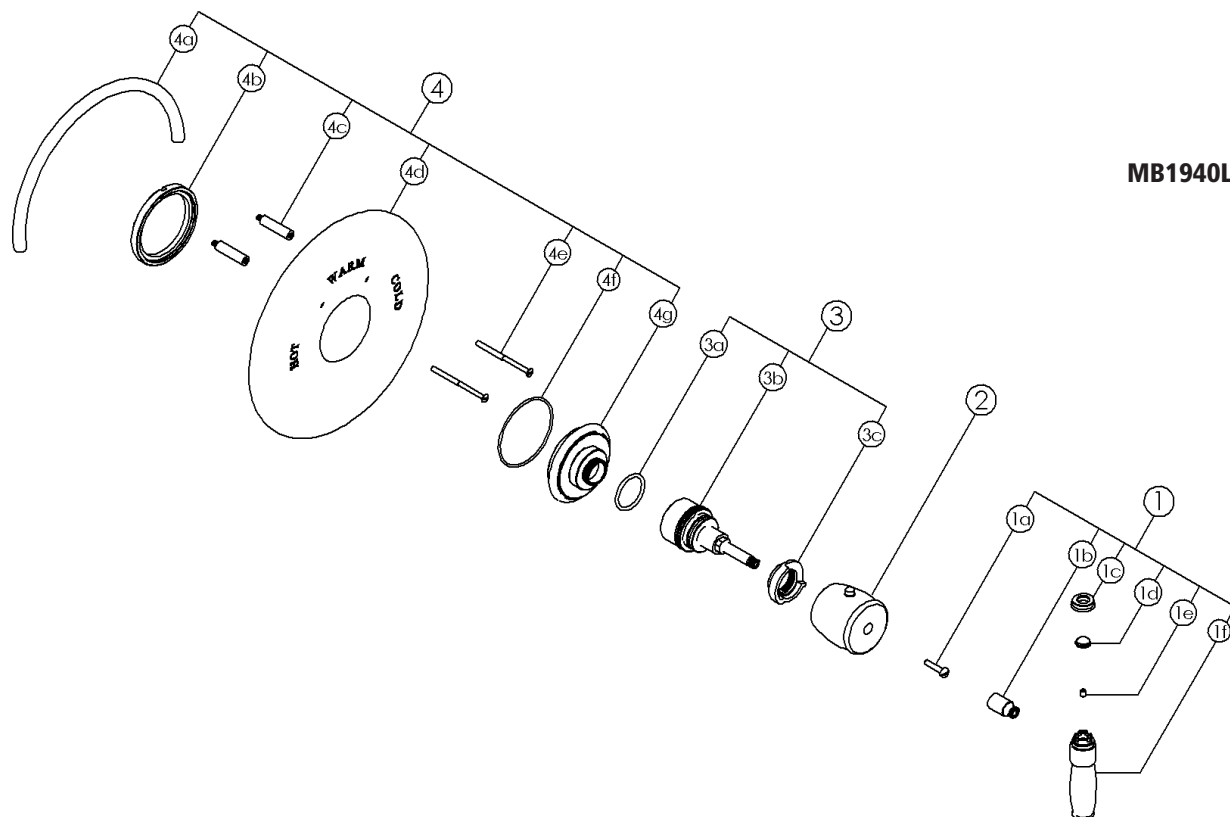
MB1940XM Spare Parts



Item	Description	Part No
1	Cross handle NO MARKINGS	R9458460*
1a	Cross handle	R94584610*
1b	M4 x 60 C/S screw	R942684
1c	Indicator cap	R9458430*
1d	Indicator cap retaining ring	R9458850*
2	Thermostatic handle shroud	R9458640*
3	Thermostatic splined adaptor kit	R945863
3a	A-121 'O' ring	R9200121
3b	Thermostatic splined adaptor	N/A
3c	Thermostatic stop	R945869
4	Thermostatic faceplate complete	R9465020*
4a	Sealing gasket	R9452310
4b	Faceplate locking ring	N/A
4c	Screw spacers	N/A
4d	Thermostatic faceplate	N/A
4e	M4 x 60 C/S screw	R942684
4f	A-035 'O' ring	R9200035
4g	Faceplate escutcheon	N/A
* Items available in Polished Chrome, Polished Nickel, Satin Nickel, Tuscan Brass, Inca Brass		

N/A means you don't need a part number because it's incorporated in the larger assembly.

MB1940LM Spare Parts



MB1940LM

Item	Description	Part No
1	Wall mounted lever handle NO MARKINGS (complete)	R9458390*
1a	M4 x 60 C/S screw	R942684
1b	Handle spacer	R9458440*
1c	Indicator cap retaining ring	R9458850*
1d	Indicator cap	R9458430*
1e	M4 x 6 grub screw	R942765
1f	Wall mounted lever handle no markings	R9458390*
2	Thermostatic handle shroud	R9458640*
3	Thermostatic splined adaptor kit	R945863
3a	A-121 'O' ring	R9200121
3b	Thermostatic splined adaptor	N/A
3c	Thermostatic stop	R945869
4	Thermostatic faceplate complete	R9465020*
4a	Sealing gasket	R9452310
4b	Faceplate locking ring	N/A
4c	Screw spacers	N/A
4d	Thermostatic faceplate	N/A
4e	M4 x 60 C/S screw	R942684
4f	A-035 'O' ring	R9200035
4g	Faceplate escutcheon	N/A
*	Items available in Polished Chrome, Polished Nickel, Satin Nickel, Tuscan Brass, Inca Brass	

N/A means you don't need a part number because it's incorporated in the larger assembly.

ROHL®

Authentic Luxury for Kitchen and Bath™

www.rohlhome.com



Michael Berman 8-Jet Adjustable Showerhead

ROHL Shower Collection

WI0121

FEATURES

- Michael Berman design
- All brass shower body
- 8 adjustable anti-calcium spray nozzles
- Fully adjustable water jets that produce everything from a high pressure spray to a soft cascading stream
- 1/2" female swivel connection
- Restricted to 2.5 GPM

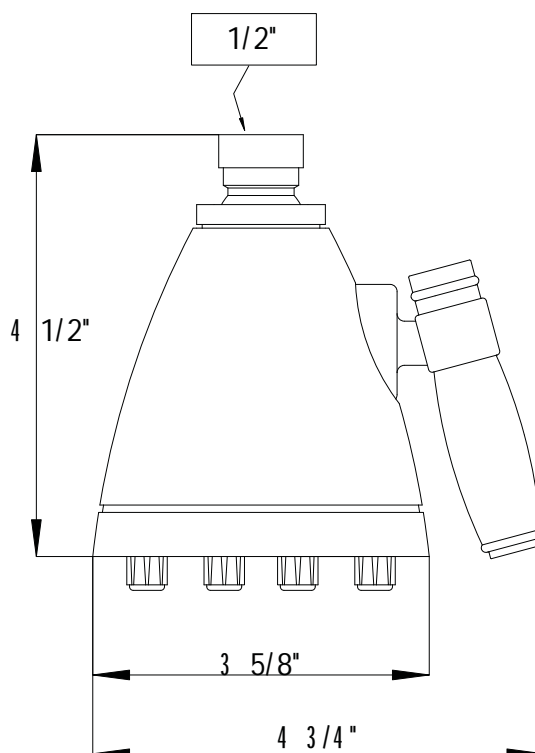
COLORS/FINISHES

- Polished Chrome
- Polished Nickel
- Satin Nickel
- Tuscan Brass

WARRANTY

- Two Years on Manufacturer Defects*

* No warranty on Tuscan Brass finish (TCB)



ROHL®

Authentic Luxury for Kitchen and Bath™

www.rohlhome.com



Michael Berman Handshower/Hose/Bar/Outlet Set

Michael Berman Bath Collection

1320

FEATURES

- Complete Package including:
 - 1220: Shower bar
 - 1130: Handshower
 - 16295: 59" Hose
 - 1295: Wall outlet
- Brass construction

1130 (Handshower):

- Single function spray pattern
- Brass construction
- 1/2" male connection
- 2.5 GPM

1220 (Shower Bar):

- Brass construction
- Wall mounting
- Sliding handshower parking bracket

1295 (Wall Outlet):

- Brass construction
- 1/2" female inlet connection
- 1/2" male outlet connection
- Sliding escutcheon

16295 (59" Hose):

- Stainless steel outer coil
- 59" flexible hose
- Double spiral
- PVC lining
- 1/2" female connections

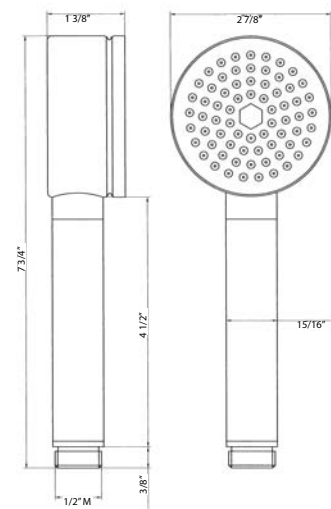
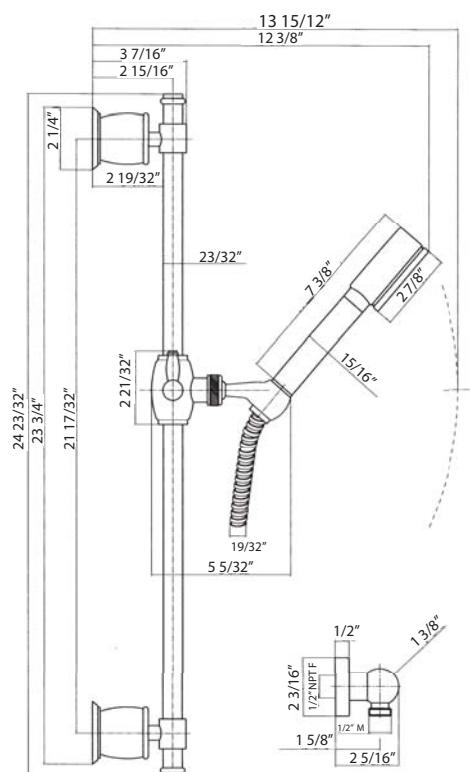
COLORS/FINISHES

- Polished Chrome
- Polished Nickel
- Satin Nickel
- Tuscan Brass

WARRANTY

- Two years on manufacturer defects*

* No Warranty on Tuscan Brass Finish (TCB)





Volume Control Trim

Michael Berman Bath

MB1951LM (Metal Lever)

MB1951XM (Cross Handle)

FEATURES

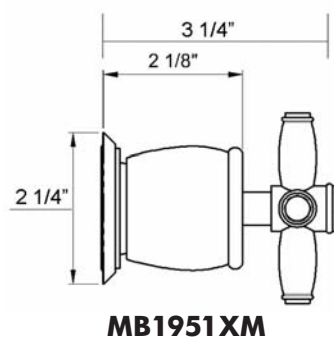
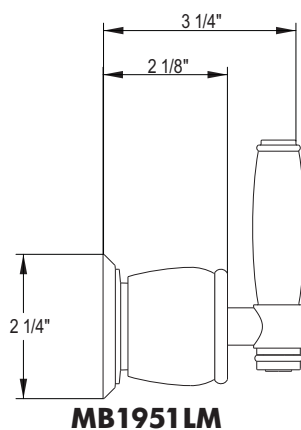
- Trim only
- Escutcheon, dome, and handle ONLY to 3/4" volume control rough valve model R1041R and R1040R or for dedicated diverter rough valve R1062BO
- All components made of brass
- **Order R1041R, R1040R or R1062BO rough to complete**

COLORS/FINISHES

- Polished Chrome
- Polished Nickel
- Satin Nickel
- Tuscan Brass

WARRANTY

- Limited Lifetime*
- * No Warranty on Tuscan Brass Finish (TCB)



ROHL®

Authentic Luxury for Kitchen and Bath™

www.rohlhome.com



Multi-Function Body Spray

ROHL Shower Collection

1095/8

FEATURES

- Multi-function spray pattern
- 2-function spray patterns
 - Classic spray
 - Concentrated spray
- Solid brass
- 1/2" female connection
- Swivel ball-and-socket joint
- 1.8 GPM restricted
- Must loop body sprays when installing
- 90% shut-off position included
- Modern style escutcheon available, order ROGSCO14
- **Upon installation, two or more body sprays need to be installed in a loop to ensure equal pressure**

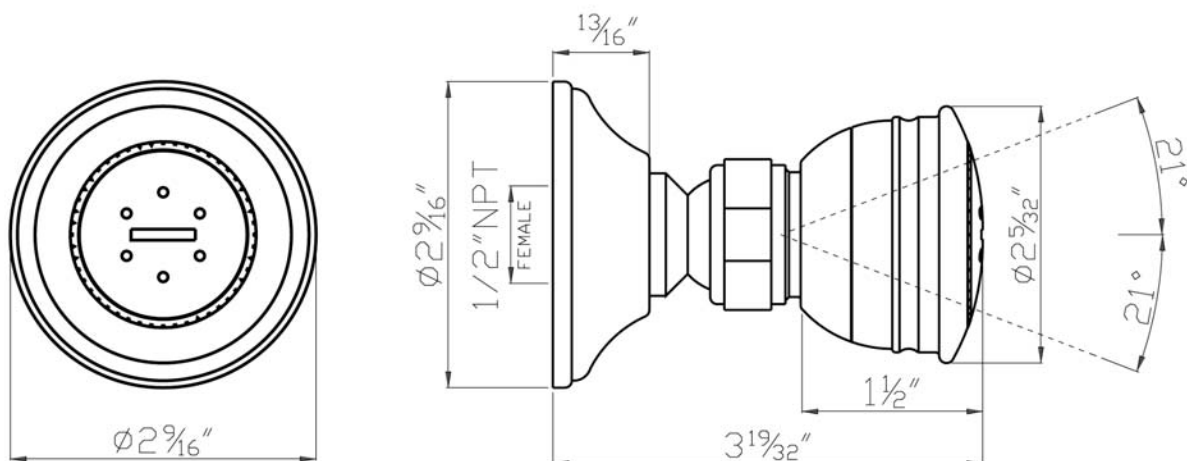
COLORS/FINISHES

- Polished Chrome
- Polished Nickel
- Satin Nickel
- Tuscan Brass
- Inca Brass
- Old Iron

WARRANTY

- Two Years on Manufacturer Defects*

* No Warranty on Tuscan Brass Finish (TCB)



Consult your local ROHL showroom for additional information and specifications. For complete warranty details and a list of showrooms, go to www.rohlhome.com.

ROHL

Authentic Luxury for Kitchen and Bath®

www.rohlhome.com



Shower Arm

ROHL Shower Collection

1440/6 6" Shower Arm

1440/8 8" Shower Arm

FEATURES

- Brass construction
- Sliding escutcheon
- 1/2" male thread inlet supply
- 1/2" male thread outlet supply

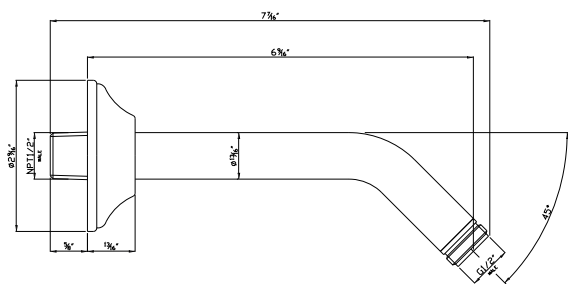
COLORS/FINISHES

- Polished Chrome
- Polished Nickel
- Satin Nickel
- Tuscan Brass
- Inca Brass
- Old Iron

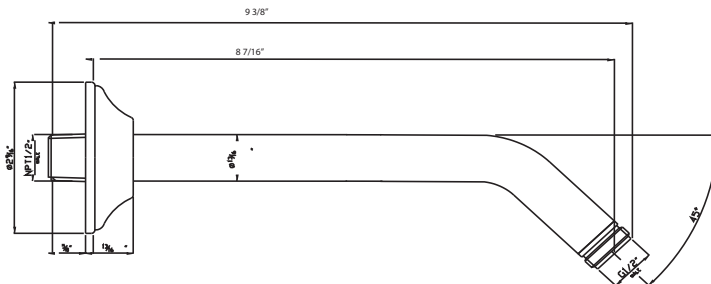
WARRANTY

- 2 years on manufacturer defects*

* No Warranty On Tuscan Brass Finish (TCB)



1440/6



1440/8