



Exposed Deck Mounted Tub Filler With Cross Handles

ROHL Perrin & Rowe Bath

U.3506X

FEATURES

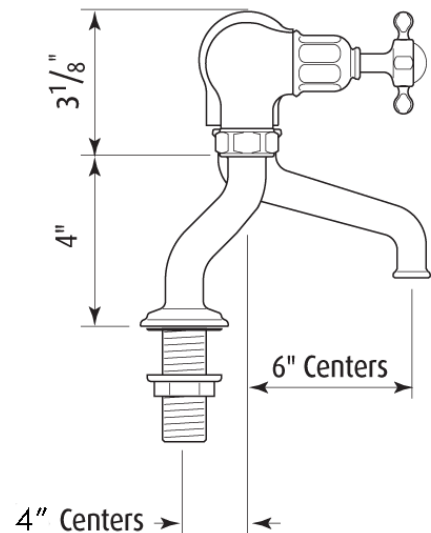
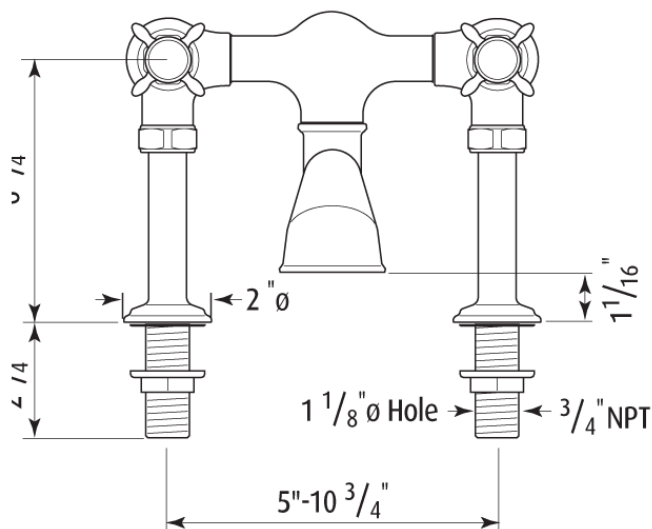
- Unique handle construction with integral bearing ring
- 1/4-turn ceramic disc flow control
- Vernier insert for accurate handle alignment

FINISHES

- Polished Chrome
- Polished Nickel
- Satin Nickel
- Inca Brass
- English Bronze

WARRANTY

- Limited Lifetime



U.3506X Spare Parts

Where * Indicated Specify Color.

