



Pressure Balance Bath or Shower Trim and Rough without Diverter

Michael Berman Bath

MB1938LM (Metal Lever) **MB1938XM** (Cross Handle)

FEATURES

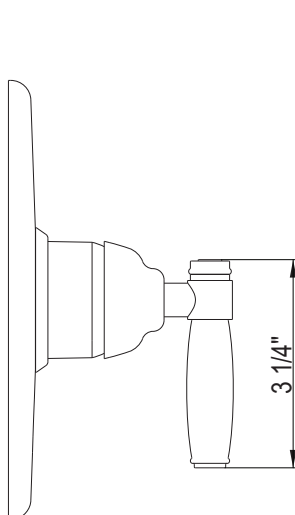
- Pressure balanced concealed bath or shower mixer trim for R2012D rough valve with volume and temperature control
- Complete with plate, escutcheon and handle
- Components made of brass
- Rotate handle clockwise for hot, counterclockwise for cold
- Move handle up for on, down for off
- MUST order R2012D rough to complete

COLORS/FINISHES

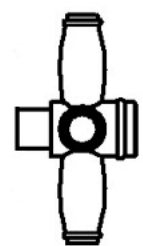
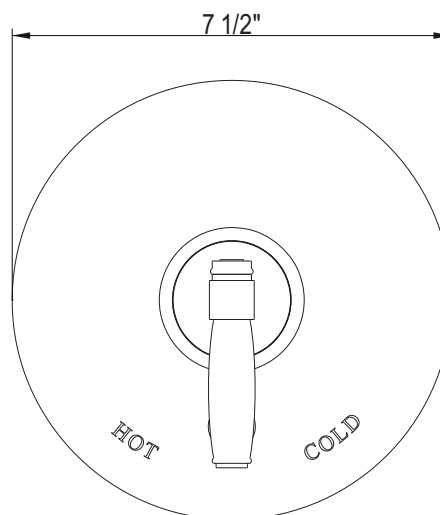
- Polished Chrome
- Polished Nickel
- Satin Nickel
- Tuscan Brass

WARRANTY

- Limited Lifetime*
- * No Warranty on Tuscan Brass Finish (TCB)



MB1938LM



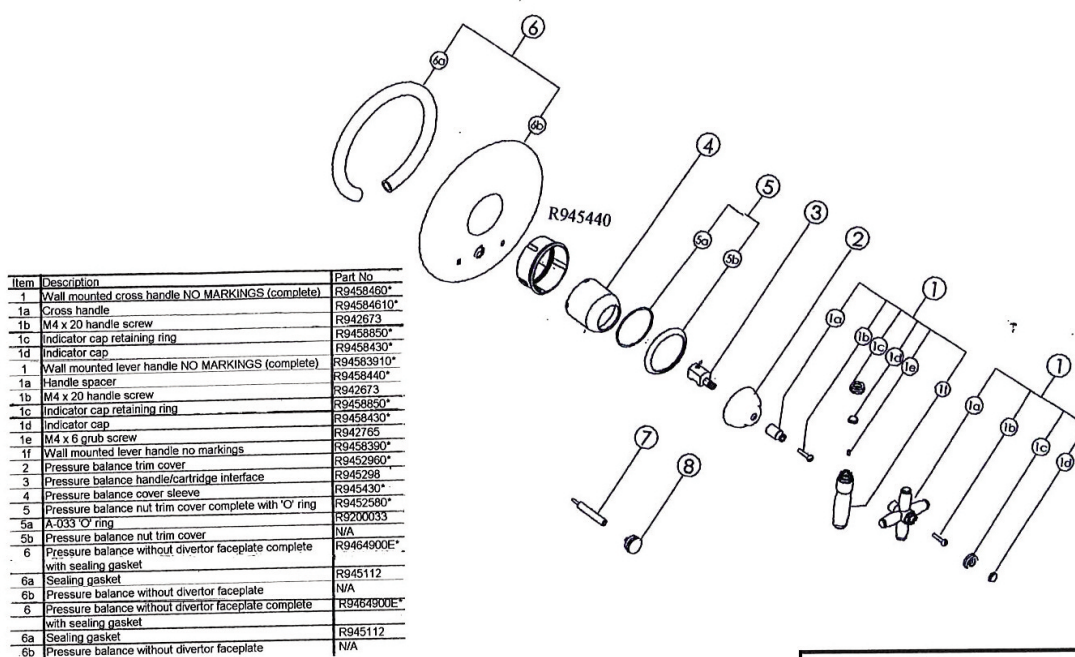
MB1938XM

Installation Instructions

MB1938 & MB1939 Pressure Balance Trim Installation Instructions

MB1938 Pressure Balance trim without diverter/ MB1939 Pressure Balance Trim with diverter

MB1939 Pressure Balance Trim with Diverter breakdown shown below

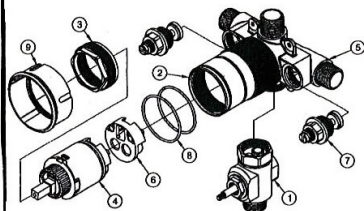


Item	Description	Part No.
1	Wall mounted cross handle NO MARKINGS (complete)	R9458460*
1a	Cross handle	R94584610*
1b	M4 x 20 handle screw	R942673
1c	Indicator cap retaining ring	R9458850*
1d	Indicator cap	R9458430*
1	Wall mounted lever handle NO MARKINGS (complete)	R94583910*
1a	Handle spacer	R9458440*
1b	M4 x 20 handle screw	R942673
1c	Indicator cap retaining ring	R9458850*
1d	Indicator cap	R9458430*
1e	M4 x 6 grub screw	R942765
1f	Wall mounted lever handle no markings	R9458390*
2	Pressure balance trim cover	R9452960*
3	Pressure balance handle/cartridge interface	R945298
4	Pressure balance cover sleeve	R945430*
5	Pressure balance nut trim cover complete with 'O' ring	R9452580*
5a	A-033 'O' ring	R3200033
5b	Pressure balance nut trim cover	N/A
6	Pressure balance without diverter faceplate complete with sealing gasket	R9464900E*
6a	Sealing gasket	R945112
6b	Pressure balance without diverter faceplate	N/A
6c	Pressure balance without diverter faceplate complete with sealing gasket	R9464900E*
6d	Sealing gasket	R945112
6b	Pressure balance without diverter faceplate	N/A

Trim Parts Instructions:

- Mount Sealing Gasket (6a) into Faceplate (6b)
- Thread on Diverter Rod (7) if applicable
- Remove faceplate nut (R945440) from valve and install faceplate (6b)
- Thread on faceplate nut (R945440)
- **Please note: faceplate nut is provided on the rough valve not with the trim**
- Use Cover Sleeve (4) as a wrench to tighten the faceplate nut into place
- Slide Trim Ring (5) onto Cover Sleeve (4) to hide the edge of the Faceplate nut (R945440)
- **Please note: O-ring (5a) is installed on the inner diameter of the Trim Ring (5b)**
- Install Cartridge Interface (3) onto stem of cartridge
- **Use of 2MM Allen key is needed**
- Slip Trim cover (2) against cartridge interface (3)
- Install Handle Spacer (1a) and tighten screw (1b)
- Install lever or cross handle onto Handle Spacer (1a)
- **Use of 2MM Allen key is needed**
- Thread on Diverter button (8)
- Test. Adjust if necessary.
- 3/8" Extension Nut available; part # R945440/2
- Extended stem available; part # 30134

SPECIFICATIONS DETAILS:			
1-4 GPM @ 60 PSI			
• Unique volume control with pressure balance			
• Integrated stops			
• Min. install depth: 2"			
• Max. install depth: 3"			
• If PEX is utilized, oversize the supply line to 1/2" for full flow capacity			
• Install any tub spout 18" min. from the diverter or valve outlet			
• If using R2012D with a wall mounted tub spout with integrated diverter, such as RT6000 diverter tub spout, a twin ell will be needed by the installer. The top outlet will be plugged.			
ITEM NO.	PART NO.	DESCRIPTION	QTY.
1	1-111	DIVERTER ONLY, PRESSURE BALANCE VALVE	1
2	10351	SLEEVE, CARTRIDGE PRESSURE BALANCE	1
3	10352	NUT, PRESSURE BALANCE VALVE	1
4	10715	CARTRIDGE, PRESSURE BALANCE 40MM	1
5a	10352	BODY, PRESSURE BALANCE FOUR X 11/2" NPT	1
5b	10807	BODY, PRESSURE BALANCE FOR DIVERTER	1
6	10810	CARTRIDGE BASE EXTENSION FOR HK-40	1
7	2-075	SHUTOFF VALVE, PRESSURE BALANCE	2
8	60031	O-RING, 1-3/4" ID X 1-7/8" OD X .118" THK, AS-568-031	2
9	R945440	FACEPLATE NUT, PRESSURE BALANCE	1



Installation Instructions

GUARANTEE TO THE CONSUMER

WARRANTY

ROHLLLC warrants this product to be free from defects in materials or workmanship for as long as the original consumer purchaser owns their home.

ROHLLLC will provide free of charge, at its option, replacement part(s) or product (or a comparable alternative product) to replace those which have proven defective in materials or workmanship. We will not assume liability for labor expended or damages accruing from the use of material purchased from us. If material is defective, the limit of damage is the price of the defective material.

Proof of purchase (original sales receipt) from the original consumer purchaser must be made available to ROHLLLC for all warranty claims. The warranty is not transferable and is extended solely to the original purchaser of the product.

WARRANTY EXCLUSION

This warranty is for normal domestic use only and excludes defect or injury caused by or resulting from misuse, abuse or neglect, accidental damage or improper installation. The lifetime limited warranty does not apply to replacement of components where damage is caused by normal wear and tear.

WARRANTY WILL BE INVALID IF:

- A. The product has not been correctly installed (whether by a plumber, contractor, service provider or member of the purchaser's household) in accordance with the manufacturer's instructions.
- B. The surface finish of the product has been damaged by use of unsuitable cleaning agents or improper materials, i.e. damage by agents containing acidic, corrosive, abrasive or alcohol-based substances or through scouring the surface by abrasive cloths.
- C. Damage has occurred to component parts due to foreign materials in the water supply (e.g. stones, metal shavings). All water lines must be flushed clear of all debris prior to installing the product. It is strongly recommended that in areas where foreign materials may be present in the water supply, an inline filter be fitted on both the Hot and Cold inlets. This will ensure your warranty remains valid.
- D. The product has been exposed to excessive high water temperature (above 80° Celsius or 175° Fahrenheit).

PARTS ONLY WARRANTY

This warranty does not cover labor charges incurred and / or damage sustained in installation, repair or replacement, nor incidental or consequential damages.