

# INSTALLING THE "E" OPTION ROBERN TFC MODEL CABINET

THE TFC CABINET WITH THE SUFFIX "E" CONTAINS AN ELECTRIC OUTLET OPTION. PLEASE USE THIS SUPPLEMENTAL INSTRUCTION SHEET ALONG WITH THE 4 PAGE INSTRUCTION SHEET SUPPLIED WITH THE CABINET TO INSTALL THE CABINET IN THE PROPER MANNER.

FIGURE A ON THE RIGHT SHOWS THE LOCATION OF THE WIRING AREA FOR THE ELECTRICAL OUTLETS.

PROVIDE ROUGH-IN WIRING AT THIS LOCATION WITH AT LEAST 8" OF LEAD LENGTH TO COMPLETE THE TERMINAL CONNECTIONS IN THE BOX AS SHOWN IN FIGURE B.

USING THE ALLEN KEY PROVIDED, ACCESS TO THE OUTLET BOX FROM INSIDE THE CABINET IS ACCOMPLISHED BY REMOVING THE TWO SCREWS SHOWN IN FIGURE A.

BE SURE THAT THE OUTLET BOX COVER IS SECURED IN THE REAR SLOT UNDER THE BACK MIRROR BEFORE CLOSING.

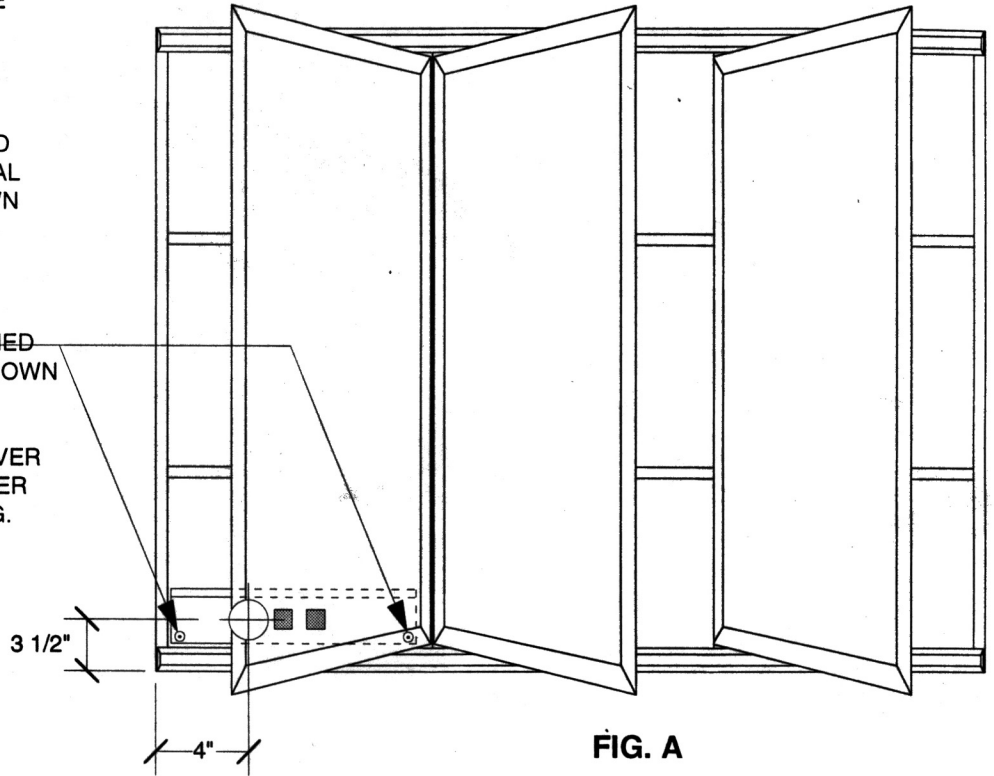
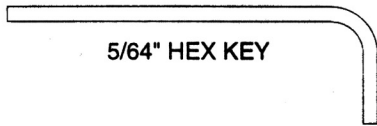


FIG. A

## ELECTRICAL HOOK UP AND SPECIFICATIONS

B/C CABINET WITH "E" OPTION • USE A 120 VAC 20 AMP CIRCUIT.

INCLUDES TWO 15 A CONVENIENCE OUTLETS IN THE LEFT COMPARTMENT.

### WARNING!

**"E" OPTION CABINET MUST BE WIRED TO A 20 AMP GFI CIRCUIT BREAKER (GROUND FAULT INTERRUPTER) WHEN USED IN BATHROOMS AND ALL OTHER LOCATIONS REQUIRED BY THE NATIONAL ELECTRIC CODE**

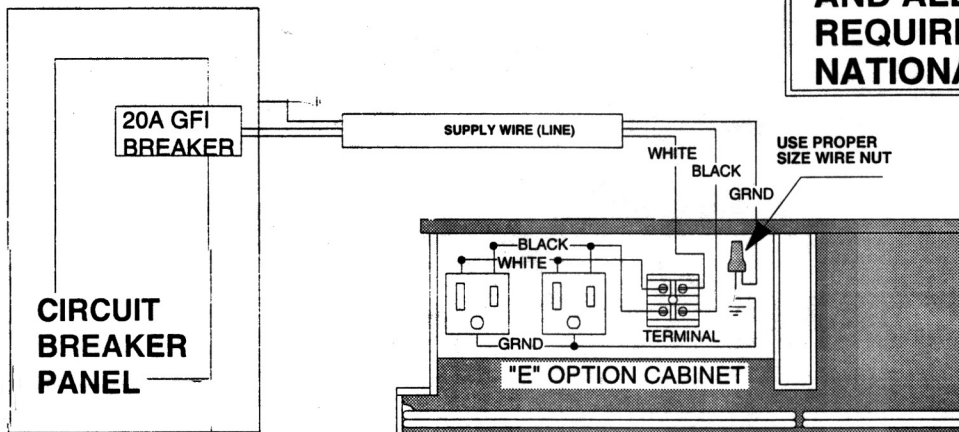


FIG. B