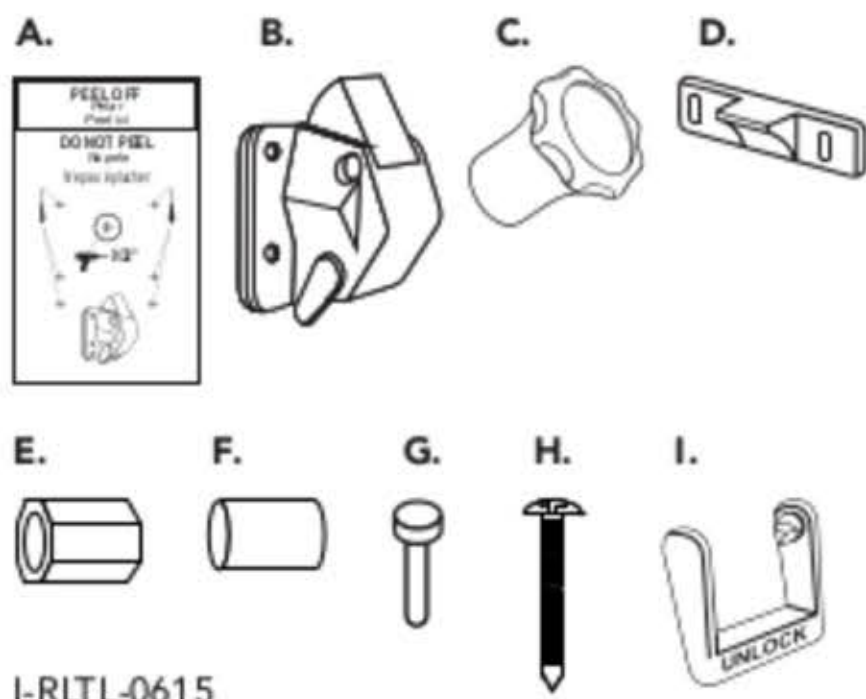


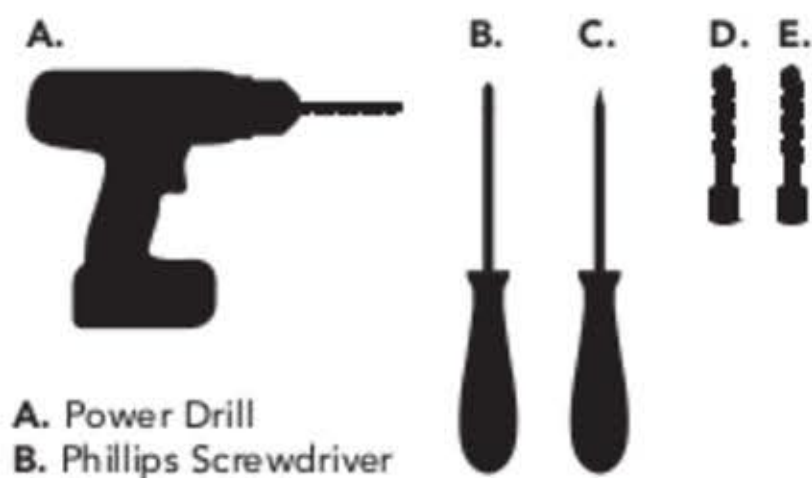
COMPONENTS

- A. Template (double sided)
- B. Lock Assembly
- C. Lock Key
- D. Striking Plate
- E. Drill Bit Depth Gauge
- F. Extension Slug
- G. Plunger
- H. Screws: #4 x 1/2" Pan Head Phillips
- I. Unlocking Bar



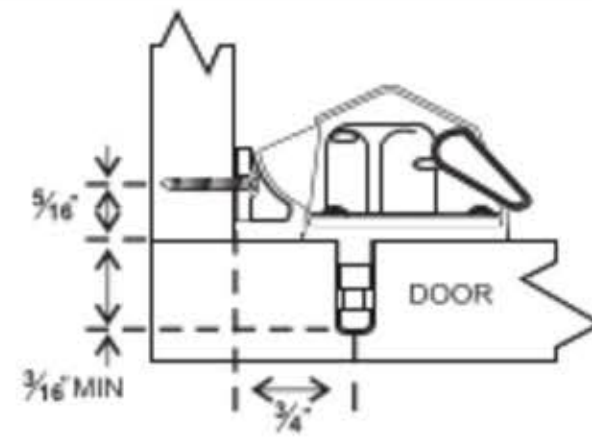
I-RLTL-0615

TOOLS REQUIRED



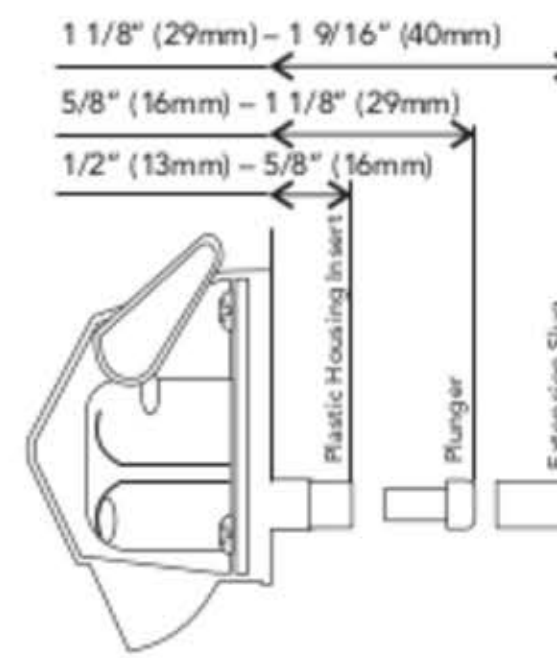
- A. Power Drill
- B. Phillips Screwdriver
- C. Punch or Nail
- D. 1-Drill Bit 9/32" (7mm)
- E. 1-Drill Bit 1/16" (1.5mm Optional for pilot holes)

INSTALLATION OVERVIEW



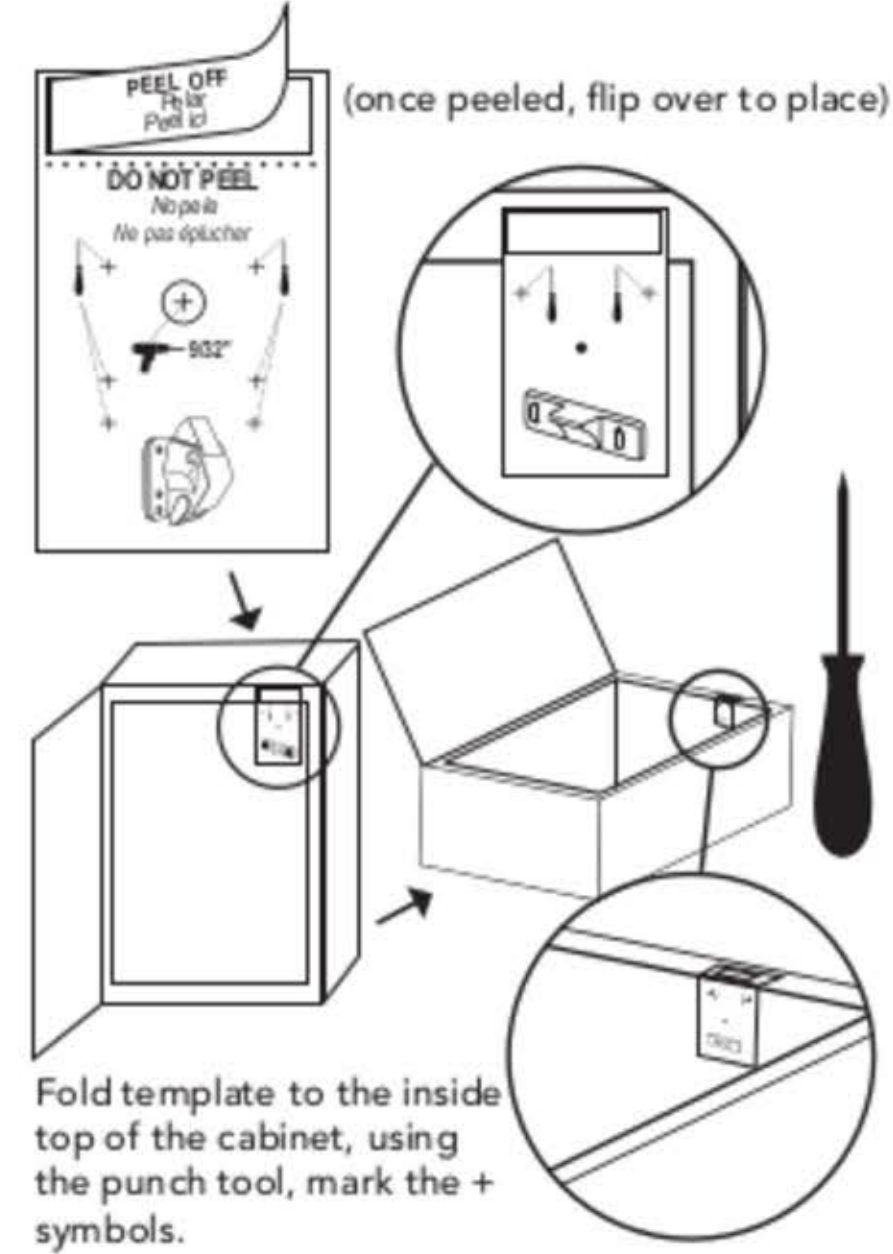
DOOR THICKNESS

Use components within arrows.



STEP 1

Peel narrow backing paper strip from *Template's* Lock Assembly side, flip over. Apply that side to cabinet frame, the *Template's* Striking Plate side is facing out.



STEP 2

