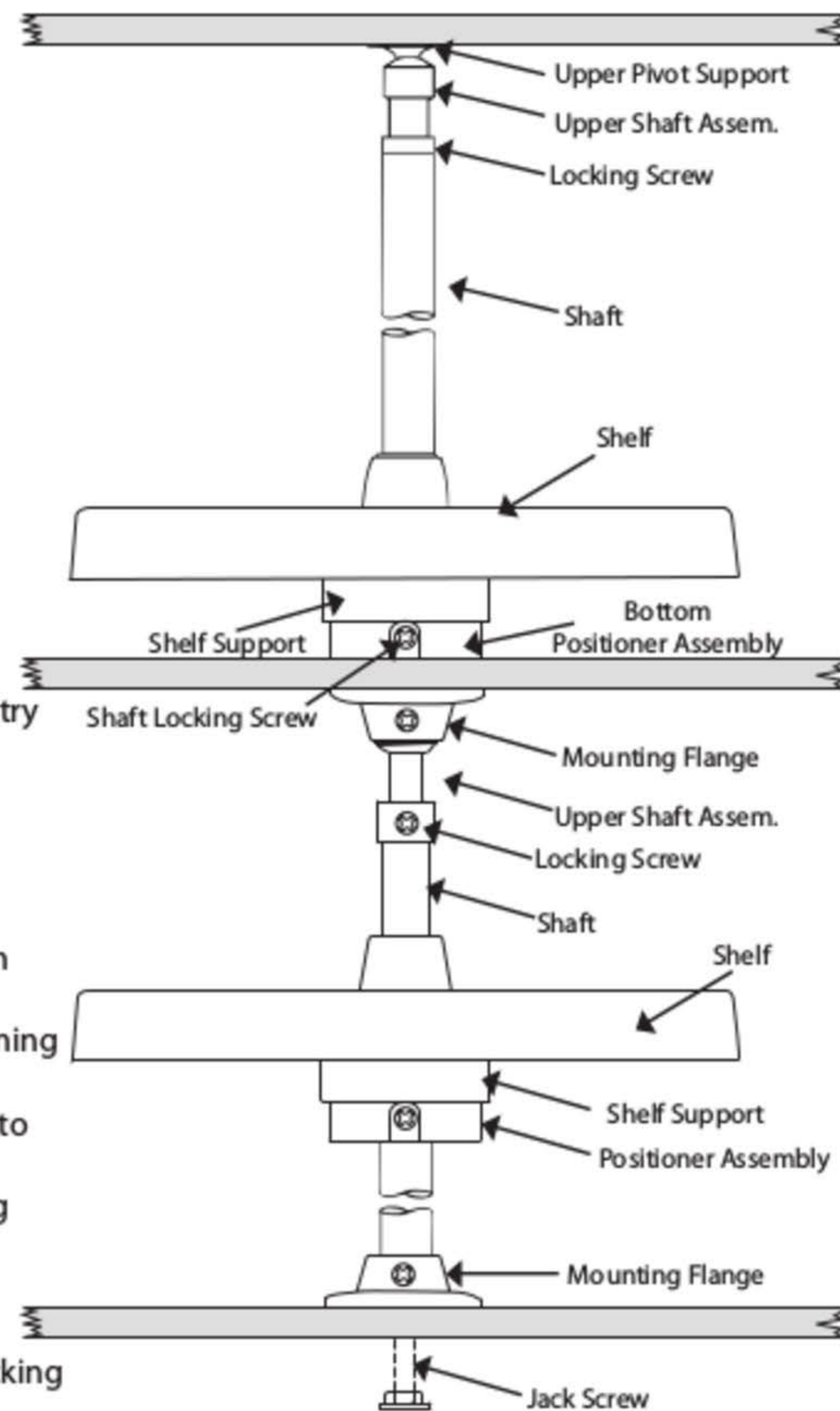




INSTALLATION INSTRUCTIONS

INDEPENDENTLY ROTATING UPPER PANTRY SHELF SYSTEM

1. Using template, install bottom positioner in cabinet with four (4) $\frac{3}{4}$ " x 8 oval head screws.
 2. Using template, install upper pivot support with four (4) $\frac{1}{2}$ " x 8 truss head screws.
 3. Starting from the bottom of the lower shaft, slide upper shelf onto shaft. Slide second positioner onto a shaft and temporarily tighten screw with positioner approximately 10 inches from bottom end of shaft. Slide bottom shelf onto shaft.
 4. Insert upper shaft assembly into lower shaft and install locking screw into lower shaft.
 5. Place unit into cabinet and engage lower and upper shafts into mounting flanges. Tighten upper mounting flange locking screw.
 6. Lift upper shaft assembly to engage in upper pivot support. Tighten locking screw.
 7. Lift lower shelf and tighten shaft locking screw in bottom positioner assembly.
 8. Adjust upper shelf positioner by grasping and supporting second positioner assembly while loosening locking screw. Rotate positioner and shelf into alignment and securely tighten locking screw.
- Note:** Ensure positioner assembly locking screws are facing straight out of cabinet to align flat position of lazy susan to cabinet opening.



INDEPENDENTLY ROTATING LOWER PANTRY SHELF SYSTEM

1. Using template install upper and lower mounting flanges with four (4) $\frac{3}{4}$ " by 8 oval head screws. * **Note:** If mounting 6270 Series upper pantry shelf system directly above 6260 series lower pantry shelf system. • Using template provided, drill four (4) $\frac{7}{32}$ " diameter holes through mounting panel. • Use four (4) 10-32 x 1" (not included) oval head self-tapping screws to fasten upper mounting flange of lower pantry to positioner assembly of upper pantry.
 2. Install positioner assembly 3" up from bottom of lower shaft and tighten locking screw.
 3. Add lazy susan and positioner assembly for next shelf. Repeat for remaining shelves.
 4. Insert upper shaft assembly into lower shaft and install locking screw into lower shaft.
 5. Place unit into cabinet and engage lower and upper shafts into mounting flanges. Tighten upper mounting flange locking screw.
 6. Tighten upper shaft assembly locking screw.
 7. Tighten lower mounting flange locking screw.
 8. Adjust shelves to desired location and tighten positioner assemblies locking screws.
- Note:** Ensure positioner assembly locking screws are facing straight out of cabinet to align flat position of lazy susan to cabinet opening.