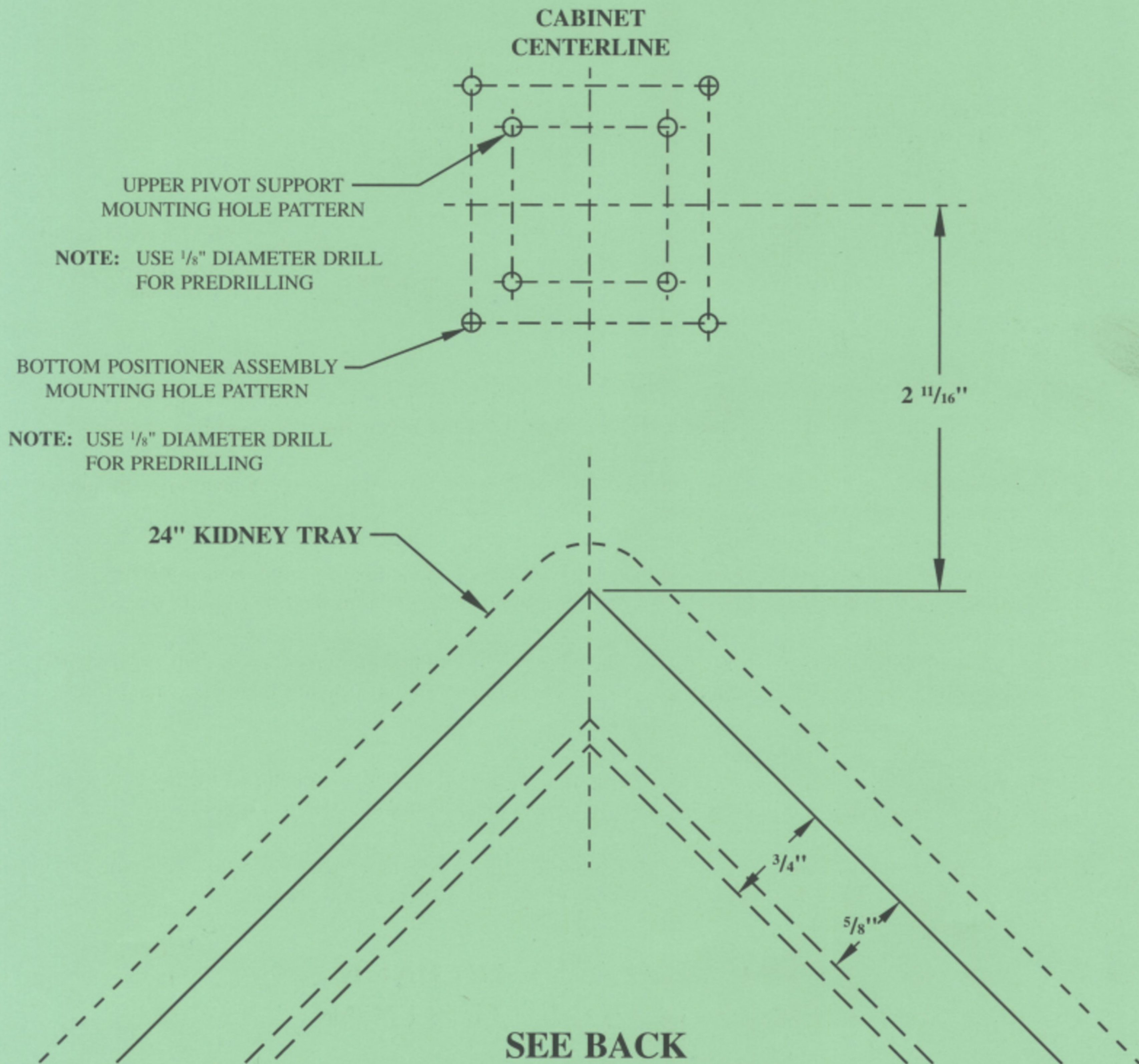


**24" REVOLVING KIDNEY  
 REV·A·SHELF TEMPLATE**

**NOTES:**

1. Be sure to check for adequate clearance at back of shelf prior to drilling holes.
2. Any inside re-enforcement must be accounted for. (Minimum dimensions noted).



UPPER PIVOT SUPPORT  
 MOUNTING HOLE PATTERN

NOTE: USE 1/8" DIAMETER DRILL  
 FOR PREDRILLING

BOTTOM POSITIONER ASSEMBLY  
 MOUNTING HOLE PATTERN

NOTE: USE 1/8" DIAMETER DRILL  
 FOR PREDRILLING

24" KIDNEY TRAY

2 11/16"

3/4"

5/8"

**SEE BACK  
 FOR INSTRUCTIONS**

PRINTED IN U.S.A.