



PREMIERE CHROME LAZY SUSANS  
28" - 32" REVOLVING KIDNEY  
INSTALLATION INSTRUCTIONS

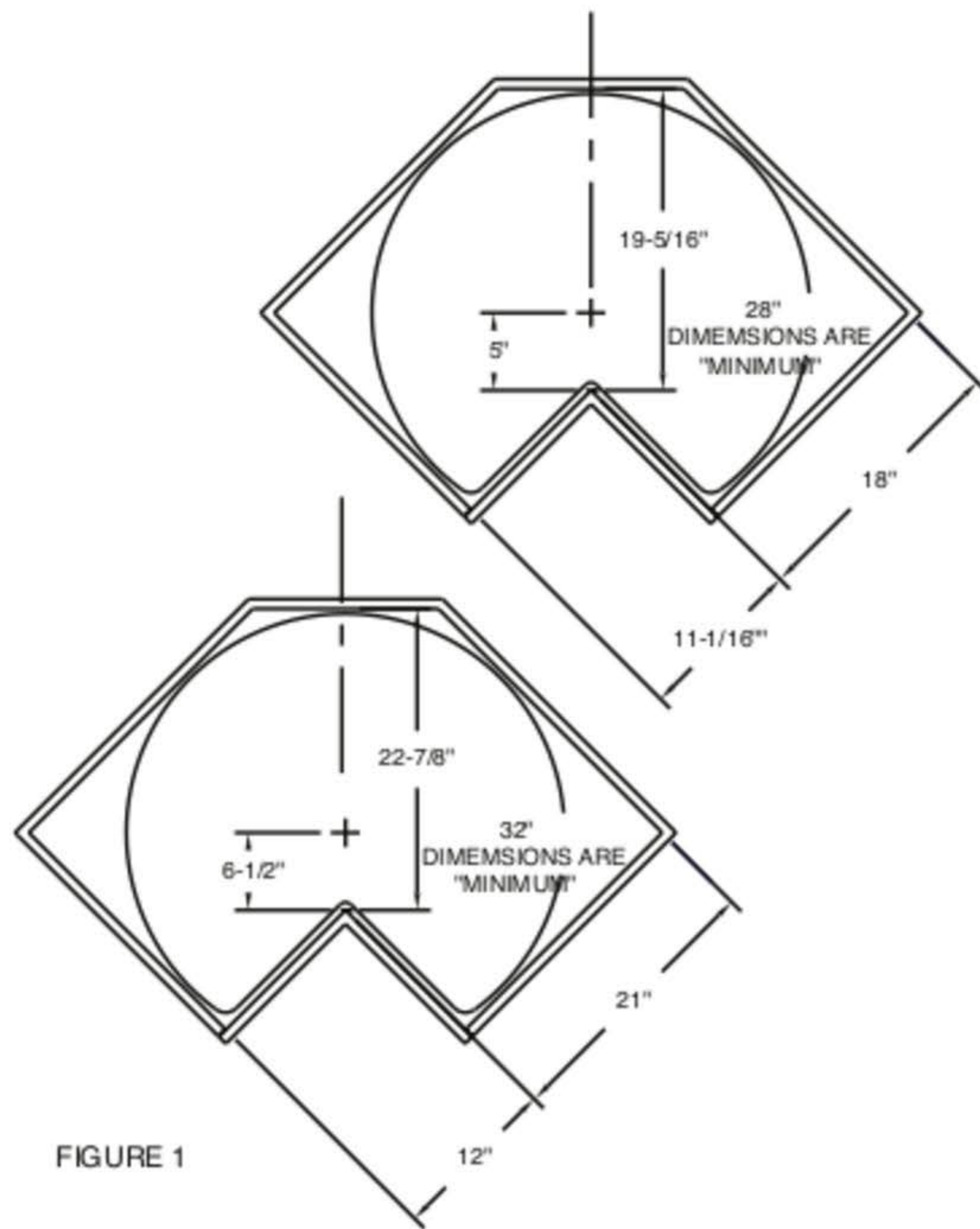


FIGURE 1

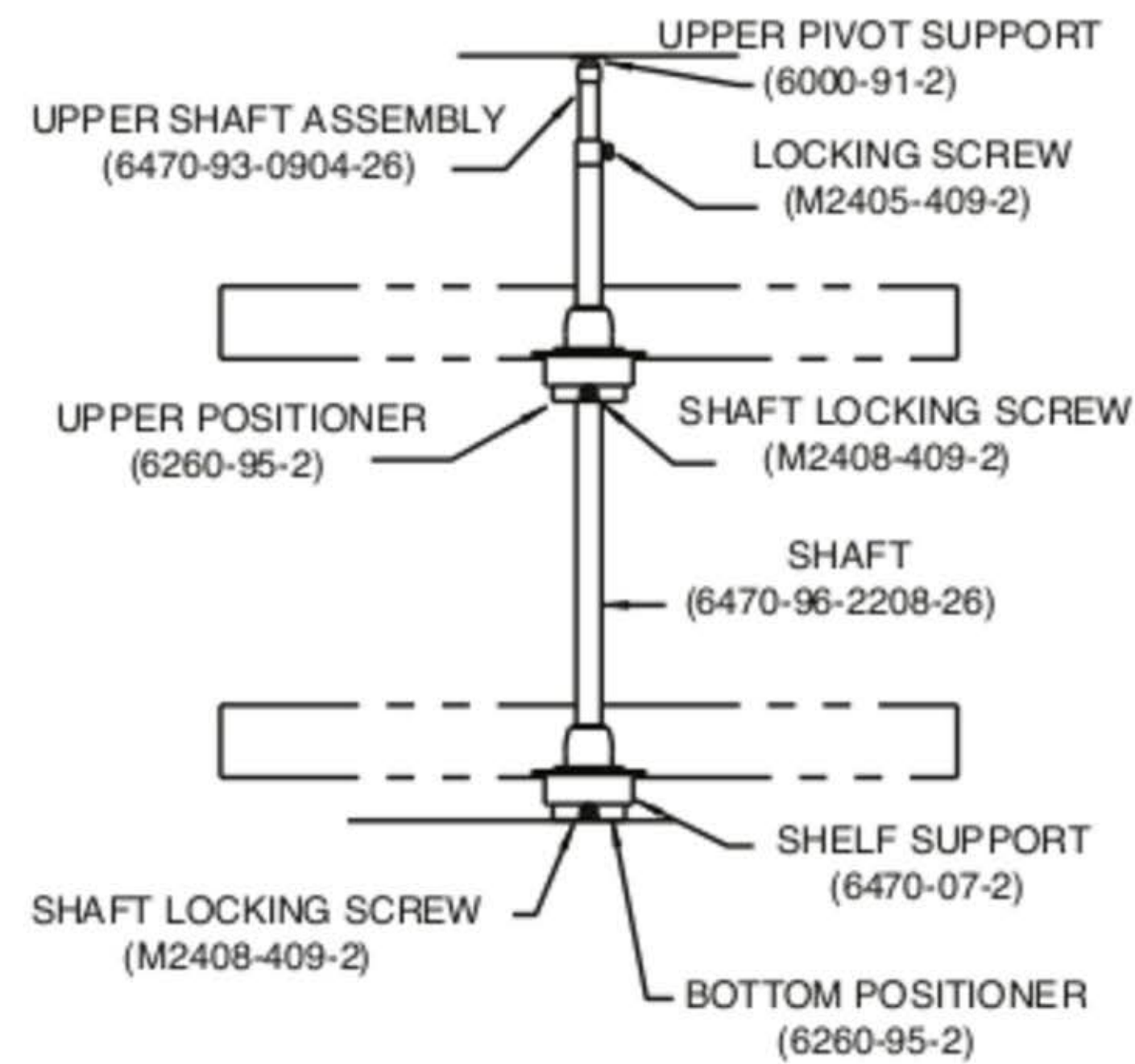


FIGURE 2

1. The dimensions shown in Figure 1. are minimum.
2. Locate the mounting holes with the template (see reverse side) and affix the bottom positioner to the cabinet floor with four (4) 3/4" x #8 (F1208-13-2) oval head screws. NOTE: Shaft locking screw must face cabinet opening.
3. Locate the mounting holes with the template and affix the upper pivot support to the underside of the cabinet top (see Figure 2) with four (4) 1/2" x #8 (F0808-26-2) oval head screws.
4. Working from bottom up, slide the upper shelf onto the shaft. Slide the upper positioner onto the shaft and temporarily tighten the screw with the positioner approximately 15" from the bottom of the shaft. Slide the bottom shelf onto the shaft.
5. Insert the upper shaft assembly into the top end of the shaft. Loosely install the lock screw. Insert the shaft/tray assembly into the bottom positioner. Extend the upper shaft assembly to engage the upper pivot support (See Figure 2).
6. Adjust the upper shelf position by grasping and supporting the upper shelf positioner assembly while loosening the locking screw. Rotate the positioner and shelf into alignment and securely tighten the locking screw.

INSTALLATION TEMPLATE  
ON REVERSE SIDE.