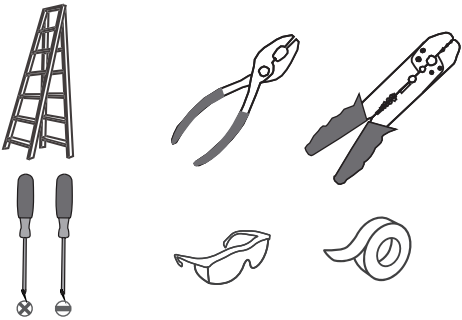
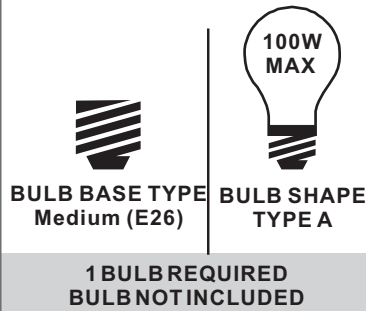


**Tools Required**



**Light Source**



**Fixture Height Adjustable 14" to 100"**

**⚠ Warnings and Cautions**

Turn off the electricity at the circuit breaker before installation. Consult a licensed electrician if in doubt about installation.

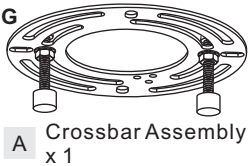
Turn off power to the fixture and allow the bulbs to cool before replacing.

**Package Contents**

**Preparation:** Identify and inspect all parts before beginning the installation.

Missing or damaged parts? Contact your original place of purchase.

**PARTS BAG**



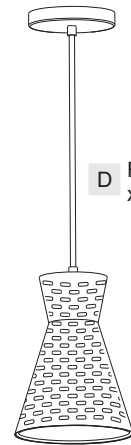
**A** Crossbar Assembly x 1



**B** Outlet Box Screw x 2



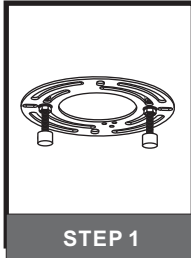
**C** Wire Connector x 3



**D** Fixture Body x 1

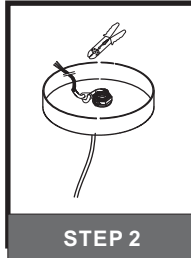
**Table of Contents**

**Crossbar Assembly**



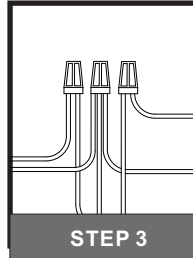
STEP 1

**Cord**



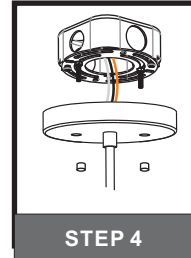
STEP 2

**Wiring**



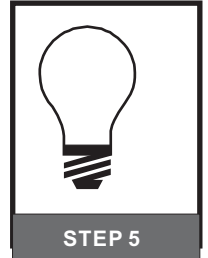
STEP 3

**Ceiling Canopy**



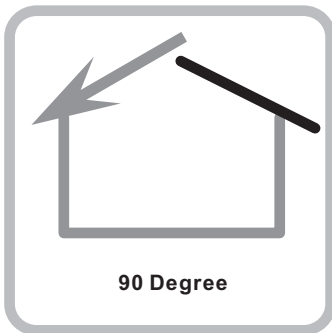
STEP 4

**Bulb**



STEP 5

**STEP 1**

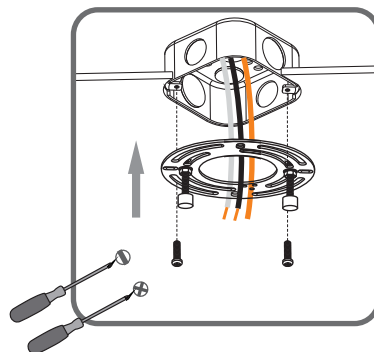


90 Degree

For angled ceilings, Swivel opening towards wall.

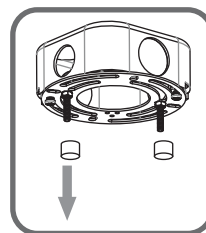
**1**

**Step 1**  
Install crossbar assembly

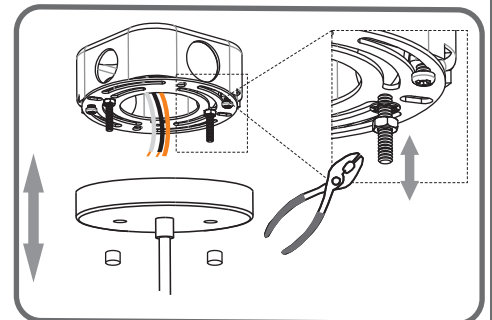


**2**

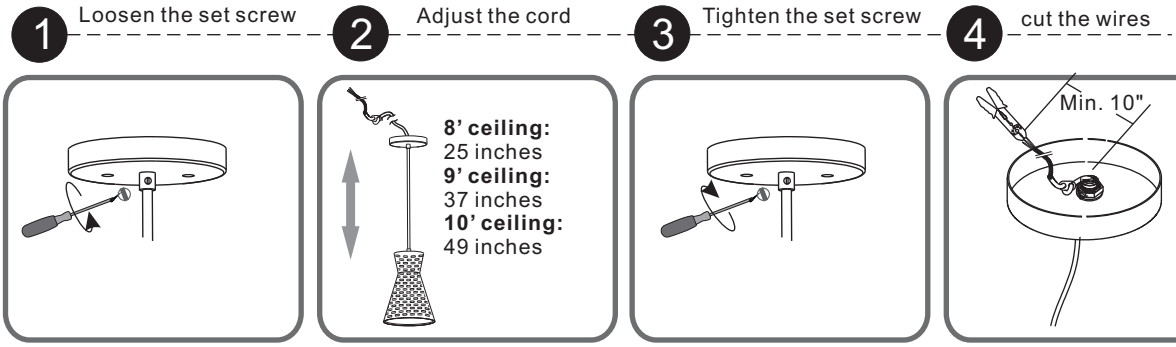
**Step 2 - 3**  
Test fitting ceiling canopy to mounting screws



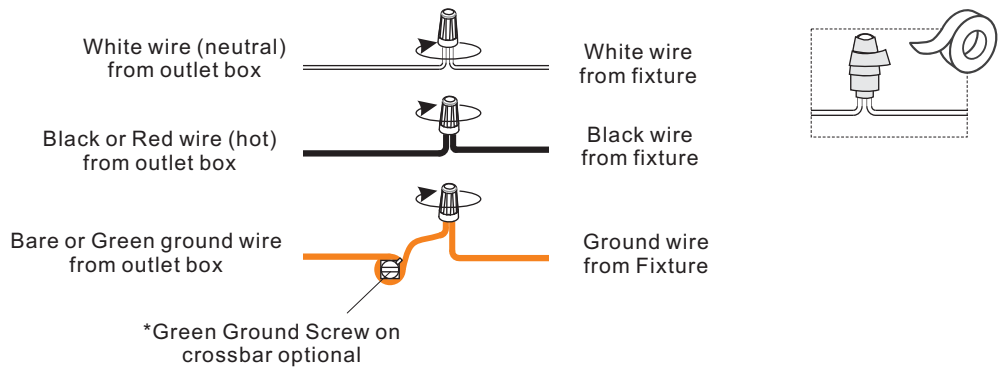
**3**



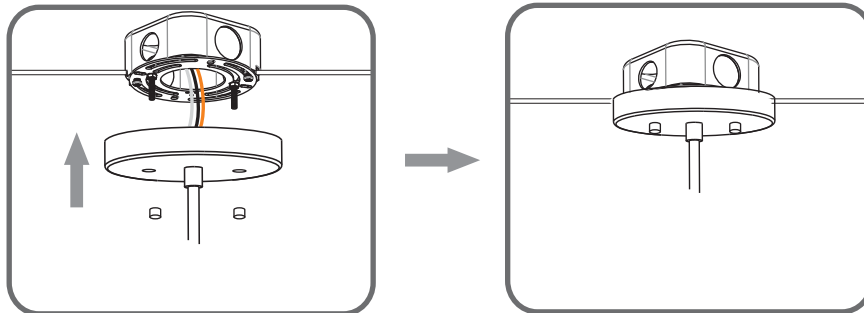
## STEP 2



## STEP 3



## STEP 4



## STEP 5

