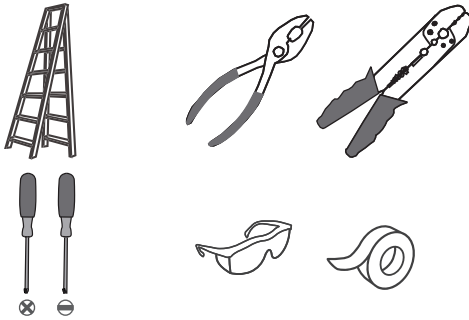


Tools Required



Light Source

40W
MAX



**BULB SHAPE
TYPE G9 XENON**

**6 BULBS REQUIRED
BULBS NOT INCLUDED**

Warnings and Cautions

Turn off the electricity at the circuit breaker before installation. Consult a licensed electrician if in doubt about installation.

Turn off power to the fixture and allow the bulbs to cool before replacing.

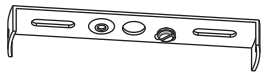
Do not touch the bulb with bare hands use a cloth or glove.

Package Contents

Preparation: Identify and inspect all parts before beginning the installation.

Missing or damaged parts? Contact your original place of purchase.

PARTS BAG



A Mounting Bracket
x 1



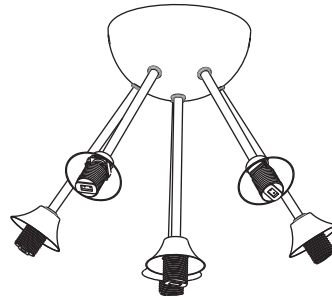
B Lock Screw
x 2



C Outlet Box Screw
x 2



D Wire Connector
x 3



E Fixture Body
x 1



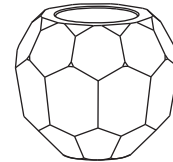
F Bulb
x 6



G Socket
Collar Tool
x 1



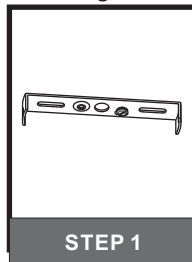
H Socket Collar
x 6



I Shade
x 6

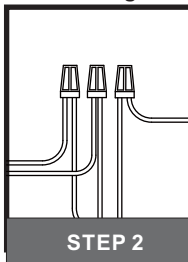
Table of Contents

Mounting Bracket



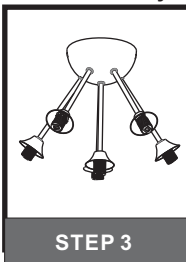
STEP 1

Wiring



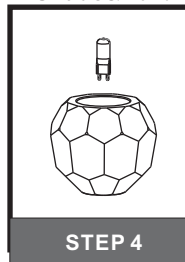
STEP 2

Fixture Body



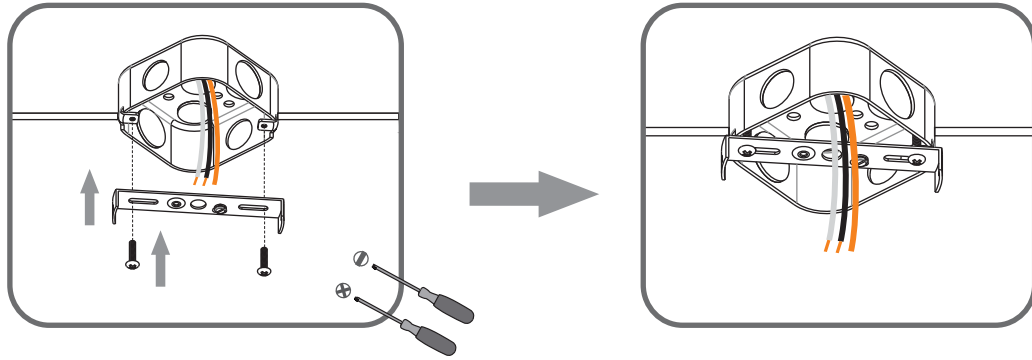
STEP 3

Shade&Bulb

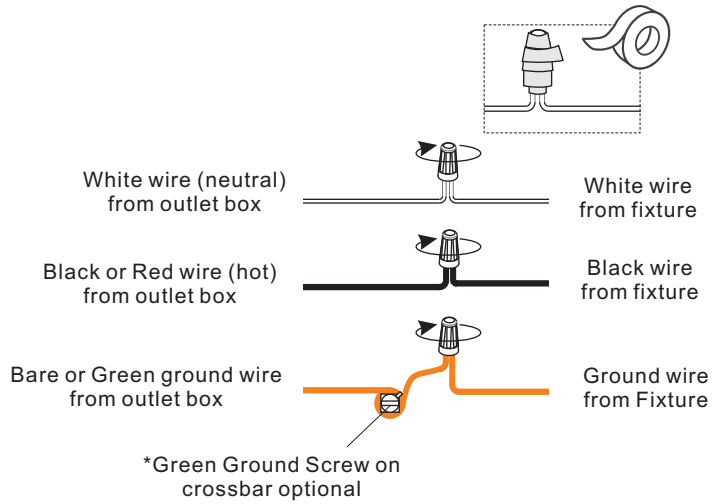


STEP 4

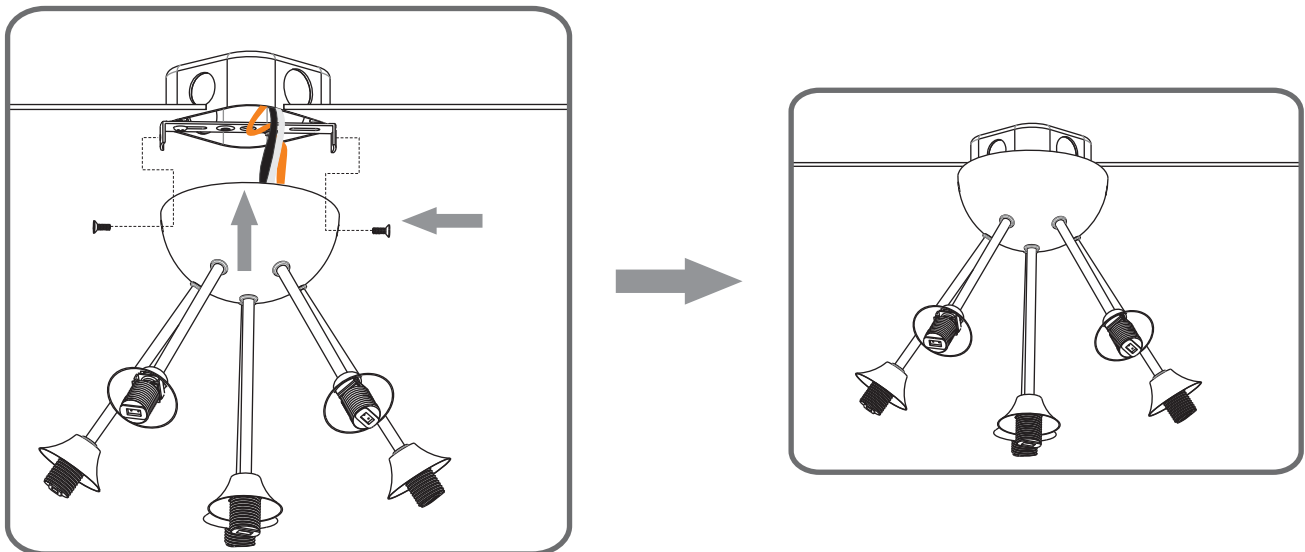
STEP 1



STEP 2



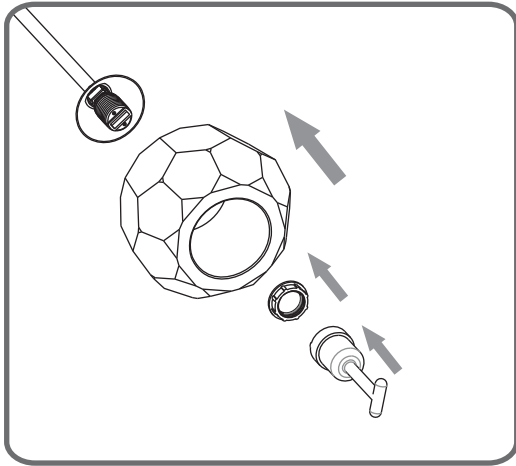
STEP 3



STEP 4

1

Install Shade



2

Install Bulb

