



PULSE

SHOWERSPAS

Installation Instructions
Bonzai Rain Shower System
Model # 1017



Invigorate. Decorate. Rejuvenate.

Congratulations on your purchase of a Bonzai PULSE Showerspa. We take great pride in the styling, quality and workmanship of this product. With proper installation and care, your Showerspa will give you a showering experience like never before. Get ready to start your day in a whole new way and **FEEL THE PULSE!**

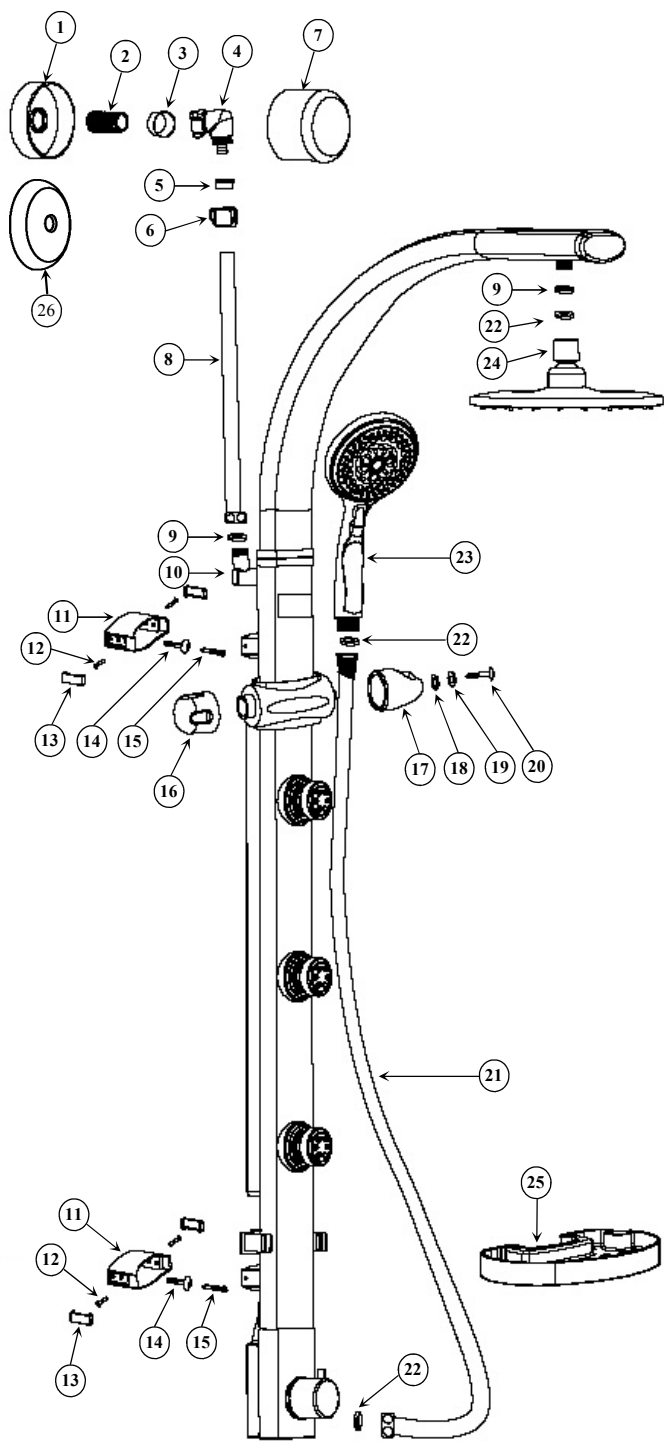


Figure A

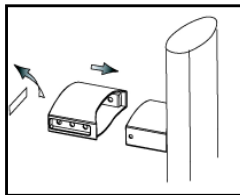


Figure B

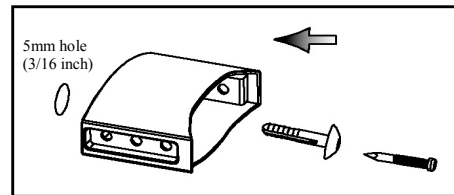


Figure C

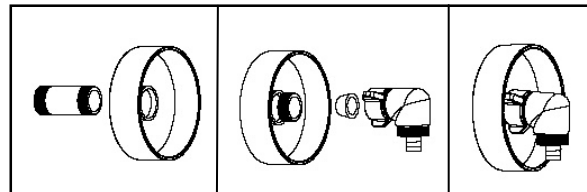


Figure D

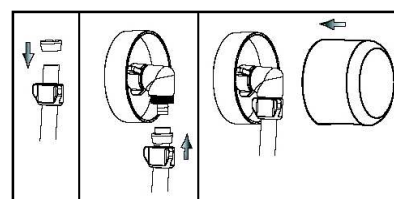


Figure E

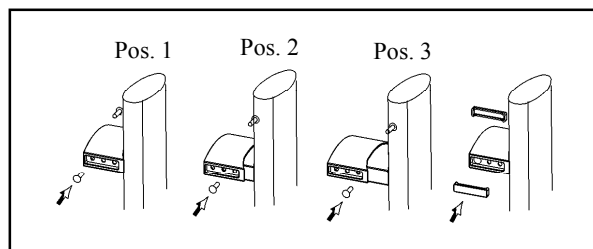
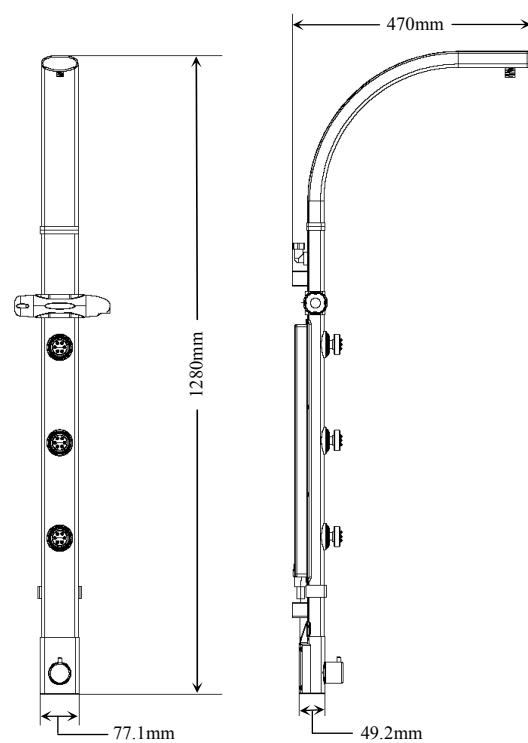


Figure F

#	Part Description	Qty.	#	Part Description	Qty.
1.	escutcheon base plate w/tape	1	14.	nylon insert w/mushroom head	2
2.	½ inch x 2½ inch brass nipple	1	15.	mounting pin/nail	2
3.	cone shaped rubber washer	1	16.	handle	1
4.	90° chrome connector	1	17.	handshower holder	1
5.	ferrule shaped washer	1	18.	hexagon washer	1
6.	chrome finned nut	1	19.	stainless steel washer	1
7.	escutcheon cover	1	20.	stainless steel screw	1
8.	18 inch (46 cm) PVC supply line	1	21.	1.5M PVC hand shower hose	1
9.	washer w/mesh	1	22.	2mm round washer	3
10.	90° Showerspa Inlet	1	23.	hand shower	1
11.	mounting bracket	2	24.	shower head	1
12.	Philips head coarse thread screw	4	25.	ABS shelf	1
13.	mount cover plate	4	26.	"Optional" thin escutcheon	1



Thank you for choosing the
Bonzai Rain Shower System Model #1017
By PULSE Showerspans Inc.

The assembly and installation of the Bonzai Rain Shower System is designed to be quick and easy. If you have any installation questions or performance problems, call PULSE Customer Service toll free at 888-785-7320 or visit www.pulshowerspas.com for more information.

Please read these instructions carefully to become familiar with the components [See Figure A], installation procedures and tools required. Follow the steps in the order presented to help avoid any mistakes.

Tool Needed: Cordless Drill, 3/16 inch (5mm) tile/masonry drill bit, hammer, adjustable wrench, Philips screwdriver and pencil.

Determine general mounting location:

If you have a two handled valve (separate handles for hot and cold) we suggest installing the unit centered between the two handles.

CAUTION: Use extra care when drilling holes for mounting brackets as the wall you are drilling has live (active) plumbing behind it.

If you have a single handle mixing valve and its location prevents the preferred mounting height of the Showerspa, we recommend installing the unit on either the right or left side of the valve, depending on shower layout. Keep in mind direction of body sprays and shower door orientation.

Getting started:

1. Remove existing shower head and the escutcheon (cover) from shower arm.
2. To determine minimum length NPT nipple (2) required:
 - a) Place a mark on the existing shower arm at the wall surface.
 - b) Unscrew shower arm from elbow in wall.
 - c) Measure distance from mark made on shower arm to end of shower arm threads.
 - d) Add ½ inch to this measurement, and then round up to nearest ½ inch. (I.e. if measurement = 1¾ inches, add ½ inch = 2¼ inches rounded up = 2½ inch NPT nipple. This is the minimum length required with maximum length to be + 1 inch. *NOTE: If supplied 2½ inch nipple (2) is not the correct length based on above formula, you must obtain the correct size - sold separately. Various length NPT brass nipples are readily available at most hardware stores.*
3. Apply generous amount of Teflon tape and/or pipe sealant to nipple (2) and adequately tighten into elbow in wall to ensure no leaks. Do not damage or mar the final ½ inch of nipple threads protruding from wall.
4. Insert washer (9) into hexagon fitting of supply line (8) and connect to 90° inlet (10). Do not over tighten.
5. Hold Showerspa to wall to determine ideal mounting position. Evaluate shower head and body spray heights making certain supply line (8) will reach NPT nipple (2). Once confident of mounting location, mark wall at top mount (11) as a reference point. *NOTE: Supply line can be shortened but not lengthened!*
6. Slide both female mounts (11) over male mounts on Showerspa. Do not secure. Remove covering of two faced tape on female mounts and carefully position Showerspa onto the wall at predetermined location. **[Figure B]** *HINT: When positioning Showerspa, press the top mount into position first, making sure Showerspa is perfectly vertical before pressing the bottom mount against wall surface.*
7. Carefully slide Showerspa out of female mounts. Female mounts should remain on the wall.
8. For solid surface walls (tile, marble, granite etc.) use a 3/16 inch (5mm) masonry/tile drill bit. Slowly and carefully drill a 1¼ inch (32mm) deep hole into wall through existing hole of female mounts. **CAUTION: live (active) plumbing is behind the wall!** *NOTE: If attempting to mount Showerspa to fiberglass wall you must purchase the appropriate type mounting anchors (Qty 2) for this type of wall surface. – sold separately. PULSE Showerspans, Inc. does not recommend mounting to fiberglass wall surfaces without adequate wood or sheetrock backing!*
9. Insert nylon anchor (14) through the female mount (11) making sure mushroom head is seated firmly against mount and mount is firmly seated against wall. Using a hammer, tap nail (15) into anchor body until flush with nylon head. **[Figure C]**
10. Remove covering of two faced tape on escutcheon base plate (1) and slide over nipple (2) securing base plate to wall. *NOTE: Optional thin escutcheon (26) is provided for installations where the ABS escutcheon (7) interferes with desired mounting height of Showerspa. HINT: For best finished look when using thin escutcheon (26), nipple should only extend ½-¾ inch (12-19mm) from wall surface.*
11. Secure 90° chrome connector (4) with cone shaped washer (3) to nipple. Do not over-tighten. **[Figure D]** *IMPORTANT: Wide end of cone shaped washer inserts into 90° connector with narrow end inserting into nipple.*
12. Insert Showerspa into wall mounts. Determine the correct length of supply line (8). Supply line must install completely over barbed portion of 90° chrome connector (4). To shorten, remove Showerspa from wall and cut supply line with sharp utility knife.
13. Insert Showerspa back into wall mounts, slide “finned” nut (6) followed by narrow end of ferrule shaped washer (5) over supply line hose (8). Push hose onto barbed portion of 90° chrome connector (4) and secure with finned nut (6). Do not over-tighten. Push escutcheon (7) into base plate (1). **[See Figure E]** *HINT: apply small amount of liquid soap to help slide hose onto barbed connection.*
14. Select mounting hole for required spacing from wall and secure with Philips head screws (12). Do not over tighten. Insert chrome covers (13) into mounts to hide screws. **[See Figure F]**
15. Thread handle (16) onto left side of hand shower mount. Place hanger (17) on right side followed by hexagon washer (18), round washer (19) and secure with screw (20).
16. Insert washer (22) into each end of hand shower hose (21) and secure to Showerspa and hand shower (23).
17. Insert washer (22) then screened washer (9) into shower head (24) and securely tighten to Showerspa.
18. Carefully insert ABS shelf (25) into mounting bracket until tabs lock in place.
19. You are now ready to enjoy your new Bonzai Rain Shower System by PULSE Showerspans, Inc.



PULSE

SHOWERSPAS

Manufacturer's Warranty

PULSE Showerspans, Inc. warrants that all Showerspans are free from defect in workmanship and/or materials for a period of three years from the date of purchase. Damage caused by accident, misuse, abuse, harsh chemicals or abrasive cleaners is not covered by this warranty. Should any Showerspa be determined by PULSE to be defective in normal residential use, at the option of PULSE, such product shall either be replaced or repaired and returned to the customer free of defects. The customer shall give notice of any defects to PULSE Showerspans, Inc. within thirty days of discovery of such defect.

Proof of purchase (original sales receipt) must be provided to PULSE Showerspans, Inc. with all warranty claims. PULSE Showerspans, Inc. is not responsible for labor charges, removal charges, installation, or other consequential costs. In no event shall the liability of PULSE Showerspans, Inc. exceed the purchase price of the Showerspa.

Some states/provinces do not allow limitations of how long an implied warranty lasts or the exclusion or limitation of such damages, so these limitations and exclusions may not apply to you. This warranty gives the consumer specific legal rights. You may also have other rights that vary from state/province to state/province. This warranty is to the original consumer purchaser only, and excludes product damage due to installation error, product abuse, or product misuse, whether performed by a contractor, service company or the consumer.

Follow manufacturers recommended installation. Use caution with children under ten years of age. Do not use Showerspa as a support device. Do not use harsh chemicals or abrasives when cleaning. Turn water supply off when servicing Showerspa.

*PULSE Showerspans, Inc. ♦ 49-A Hangar Way Watsonville, CA 95076 ♦ U.S.A.
Tel: 831-724-7300 ♦ Fax: 831-724-7390 ♦ Toll Free: 888-785-7320
Email: info@pulseshowerspans.com ♦ website: www.pulseshowerspans.com*