



LED

**6" High Output Pro-Optic® LED**  
New Construction Downlight  
120-277V  
0-10V Dimming

**Recessed**

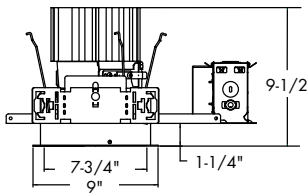
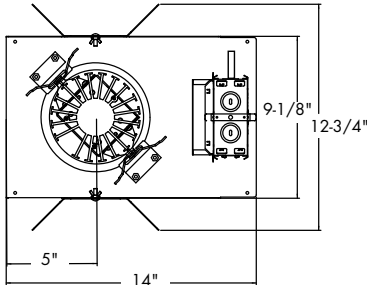
Type \_\_\_\_\_  
-EB120V -EB277V

P8212

All Items **MTO**

Ceiling Cutout: see guide

Maximum Ceiling Thickness: 1-1/2"



**LED Housing**  
Catalog No. Description

P8212-EB120V	6" LED New Construction 120V Housing
P8212-EB277V	6" LED New Construction 277V Housing

**LED Trim**  
Catalog No. Reflector Finish LED Color Temp Flange Options

<input type="checkbox"/> P8112	6" LED, 2800lm module	<input type="checkbox"/> -21A Clear Alzak®	<input type="checkbox"/> /30K 3000 Kelvin	
		<input type="checkbox"/> -22A Gold Alzak®	<input type="checkbox"/> /35K 3500 Kelvin	
		<input type="checkbox"/> -28 White	<input type="checkbox"/> /40K 4000 Kelvin	(White flange standard)

Example: P8112-21A/30K (Ordered separately)

**Specifications:**

General

- 6" commercial grade LED downlight utilizing remote phosphor technology to obtain color consistency, energy savings, and low maintenance costs
- 50,000 hours minimum life up to 40°C (104° F) in open plenum applications

Housing

- One-piece 22 gauge non-corrosive steel platform
- Pre-wired J-box with snap-on cover for easy access
- Snap-in connection from driver compartment allows easy installation of light engine/trim assembly without tools above or below the ceiling and can be upgraded to accommodate technology improvements
- Approved for 8 (4 in/4 out) No. 12 AWG conductors rated for 90°C through wiring

Reflector

- High purity aluminum Alzak, iridescence suppressed, semi-diffuse reflector
- Self-flanged trim standard
- White painted self-flanged trim (-28) option available

LED Light Engine

- The P8212 uses the Philips Fortimo DLM LED

Module with remote phosphor technology. This technology provides controlled color consistency from fixture to fixture

- The system is designed for optimal life and lumen maintenance (50,000 hours at 70% lumen maintenance)
- Both reflector and light engine assembly are mechanically retained to housing. The light engine comes standard with 80 CRI for all CCT's

LED Driver

- Driver is designed to match the 50,000 hour minimum life expectancy of the system
- Meets UL Class 2, inherent short circuit protection, self limited, overload protected
- Integrated thermal feedback loop will gradually reduce current to protect system life
- Universal driver 120V-277V

Dimming

- Flicker-free 0 – 10V dimming to 10%

Labeling

- cCSAus certified to US and Canadian safety standards
- Suitable for wet locations
- 5 year warranty

Progress Lighting  
701 Millennium Blvd.  
Greenville, South Carolina  
29607

www.progresslighting.com



LED

**6" High Output Pro-Optic® LED  
P8212/P8112**

**Recessed**

<b>DRIVER DATA</b>	<b>P8112 30K</b>	<b>P8112 35K</b>	<b>P8112 40K</b>	<b>P8112 30K</b>	<b>P8112 35K</b>	<b>P8112 40K</b>
Input Voltage	120V	120V	120V	277V	277V	277V
Input Frequency	60 Hz	60 Hz	60 Hz	60 Hz	60 Hz	60 Hz
Input Current	0.5A	0.5A	0.5A	0.28A	0.28A	0.28A
Input Power	49W	46W	46W	48W	45W	45W
Constant Current Output	.3 – 1.0 A	.3 – 1.0 A	.3 – 1.0 A	.3 – 1.0 A	.3 – 1.0 A	.3 – 1.0 A
Power Factor	≥0.90	≥0.90	≥0.90	≥0.90	≥0.90	≥0.90
THD	<20%	<20%	<20%	<20%	<20%	<20%
EMI Filtering	FCC 47CFR Part15, Class A	FCC 47CFR Part15, Class A	FCC 47CFR Part15, Class A	FCC 47CFR Part15, Class A	FCC 47CFR Part15, Class A	FCC 47CFR Part15, Class A
Operating Temperature	-20°C to 55°C	-20°C to 55°C	20°C to 55°C	-20°C to 55°C	20°C to 55°C	-20°C to 55°C
Dimming	0-10V	0-10V	0-10V	0-10V	0-10V	0-10V

**Dimming 0-10V 100% to 10%**

Pro-Optic LED driver is compatible with 0-10V type dimming controls. Recommended dimming controls are listed below.

<b>Control Manufacturer</b>	<b>Wallbox Dimmer</b>	<b>Power Booster Available</b>
Douglas Lighting controls	WPC 5721	
Entertainment Technology	Tap Glide TG600FAM120 (120V) Tap Glide Heatsink TGH1500FAM120 (120V) Oasis OA2000FAMU (120/277V)	
Honeywell, Inc.	EL 7315A1019 and EL7315A1009	EL7305A1010
HUNT Dimming	Preset Slide: PS-010-IV-120V and PS-010-WH-120V Preset Slide: PS-010-3W-IV-120V and PS-010-3W-WH-120V Preset Slide: PS-010-IV-277V and PS-010-WH-277V Preset Slide: PS-010-3W-IV-277V and PS-010-3W-WH-277V Preset Slide, controls FD-010: PS-IFC-010-IV- and PS-IFC-010-WH-120/277V Preset Slide, controls FD-010: PS-IFC-010-3W-IV- and PS-IFC-010-3W-WH-120/277V Remoted mounted unit: FD-010-120V and FD-010-277V	
Lehigh Electric Products Co.	Solitaire	PBX
Leviton Lighting Controls Div.	Leviton Centura Fluorescent Control System IllumaTech™ IP7 Series	CN100 PE300
Lutron Electronics Co., Inc.	Visit <a href="http://www.lutron.com/advance">www.lutron.com/advance</a> for the latest control information and selection	
PDM Electrical products	WPC-5721	
Starfield Controls	TR61 with DALI interface port	RT03 DAL Inet router
The Watt Stopper, Inc.	LS4 used with LCD-101 and LCD-103	





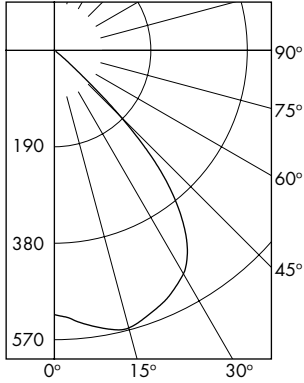
LED

6" High Output Pro-Optic® LED  
P8212/P8112

Recessed

**P8212-EB120V WITH P8112-21A/35K**

LED Light Engine: 3500K, 80 CRI  
System Wattage: 48.5W  
Fixture Delivered Lumens: 2313  
Fixture Efficacy: 47.7  
Spacing Criteria: 1.3



CANDELA DISTRIBUTION		
DEG	CANDELA	LUMENS
0	1370	
5	1413	136
15	1490	418
25	1406	647
35	1194	731
45	485	363
55	7	15
65	2	2
75	0	0
85	0	0
90	0	

Test No. 5253

Tested at 25°C Ambient in accordance to IESNA LM-79-2008

**ZONAL LUMEN SUMMARY**

ZONE	LUMENS	%LUMINAIRE
0-30	1202	52.0
0-40	1933	83.5
0-60	2310	99.9
0-90	2313	100.0
90-180	0	0.0
0-180	2313	100.0

**LUMINANCE DATA IN CANDELA/ SQ. METER**

Angle in Vertical	Average - 0°
45°	40927
55°	728
65°	282
75°	0
85°	0

**COEFFICIENTS OF UTILIZATION**

Zonal Cavity Method

Room Cavity Ratio	% Effective Ceiling Cavity Reflectance																
	80%			70%			50%			30%			10%				
	70	50	30	70	50	30	70	50	30	70	50	30	70	50	30		
1	113	110	107	105	110	108	105	103	104	102	100	100	98	97	96	95	94
2	106	101	97	93	104	99	95	92	96	93	90	93	90	88	90	88	86
3	100	93	87	83	98	92	86	82	89	85	81	86	83	80	84	81	78
4	94	86	79	75	92	84	79	74	82	77	73	80	76	72	78	75	72
5	88	79	72	68	87	78	72	67	76	71	67	74	70	66	73	69	65
6	83	73	66	61	81	72	66	61	71	65	61	69	64	60	68	63	60
7	78	68	61	56	77	67	60	56	66	60	56	64	59	55	63	58	55
8	73	63	56	51	72	62	56	51	61	55	51	60	55	51	59	54	50
9	69	58	52	47	68	58	51	47	57	51	47	56	51	47	55	50	47
10	65	54	48	43	64	54	48	43	53	47	43	52	47	43	51	47	43

P8212-EB120V P8112-21A/35K

Test No. 5170

