



LED

8" Pro-Optic® LED
New Construction Downlight
120-277V
0-10V Dimming

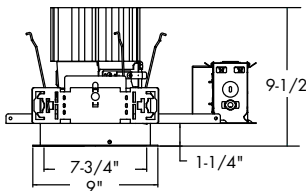
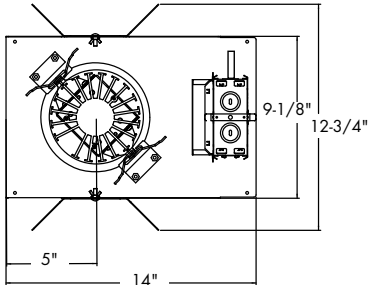
Recessed

Type _____
-EB
P8103

All Items **MTO**

Ceiling Cutout: see guide

Maximum Ceiling Thickness: 1-1/2"



LED Housing
Catalog No. Description

P8103-EB 8" LED New Construction 120-277 Housing

LED Trim

Catalog No.	Reflector Finish	LED Color Temp	Flange Options
<input type="checkbox"/> P8121 8" LED, 1100lm module	<input type="checkbox"/> -21A Clear Alzak®	<input type="checkbox"/> /30K 3000 Kelvin	
<input type="checkbox"/> P8133 8" LED, 2000lm module	<input type="checkbox"/> -22A Gold Alzak®	<input type="checkbox"/> /35K 3500 Kelvin	
	<input type="checkbox"/> -28 White	<input type="checkbox"/> /40K 4000 Kelvin	(White flange standard)

Example: P8121-21A/30K (Ordered separately)

Specifications:

General

- 8" commercial grade LED downlight utilizing remote phosphor technology to obtain color consistency, energy savings, and low maintenance costs
- 50,000 hours minimum life up to 40°C (104° F) in open plenum applications

Housing

- One-piece 22 gauge non-corrosive steel platform
- Pre-wired J-box with snap-on cover for easy access
- Snap-in connection from driver compartment allows easy installation of light engine/trim assembly without tools above or below the ceiling and can be upgraded to accommodate technology improvements
- Approved for 8 (4 in/4 out) No. 12 AWG conductors rated for 90°C through wiring

Reflector

- High purity aluminum Alzak, iridescence suppressed, semi-diffuse reflector
- Self-flanged trim standard
- White painted self-flanged trim (-28) option available

LED Light Engine

- The P8103 uses the Philips Fortimo DLM LED Module with remote phosphor technology. This technology provides controlled color consistency from fixture to fixture
- The system is designed for optimal life and lumen maintenance (50,000 hours at 70% lumen maintenance)
- Both reflector and light engine assembly are mechanically retained to housing. The light engine comes standard with 80 CRI for all CCT's

LED Driver

- Driver is designed to match the 50,000 hour minimum life expectancy of the system
- Meets UL Class 2, inherent short circuit protection, self limited, overload protected
- Integrated thermal feedback loop will gradually reduce current to protect system life
- Universal driver 120V-277V

Dimming

- Flicker-free 0 – 10V dimming to 10%

Labeling

- cCSAus certified to US and Canadian safety standards
- Suitable for wet locations
- 5 year warranty

Progress Lighting
701 Millennium Blvd.
Greenville, South Carolina
29607

www.progresslighting.com



LED

8" Pro-Optic® LED
New Construction Downlight
P8103/P8121/P8133

Recessed

DRIVER DATA	P8121 30K	P8121 35K	P8121 40K	P8133 30K	P8133 35K	P8133 40K
Input Voltage	120 - 277V	120 - 277V	120 - 277V	120 - 277V	120 - 277V	120 - 277V
Input Frequency	50 / 60 Hz	50 / 60 Hz	50 / 60 Hz	50 / 60 Hz	50 / 60 Hz	50 / 60 Hz
Input Current	0.146A (120V) 0.063 (277V)	0.156A (120V) 0.067 (277V)	0.137A (120V) 0.059 (277V)	0.146A (120V) 0.063 (277V)	0.156A (120V) 0.067 (277V)	0.137A (120V) 0.059 (277V)
Input Power	17.3W	18.5W	16.3W	36W	34W	33W
Constant Current Output	200 – 700 mA	200 – 700 mA	200 – 700 mA	200 – 700 mA	200 – 700 mA	200 – 700 mA
Power Factor	≥0.90	≥0.90	≥0.90	≥0.90	≥0.90	≥0.90
THD	<20%	<20%	<20%	<20%	<20%	<20%
EMI Filtering	FCC 47CFR Part15, Class A	FCC 47CFR Part15, Class A	FCC 47CFR Part15, Class A	FCC 47CFR Part15, Class A	FCC 47CFR Part15, Class A	FCC 47CFR Part15, Class A
Operating Temperature	-20°C to 55°C	-20°C to 55°C	20°C to 55°C	-20°C to 55°C	20°C to 55°C	-20°C to 55°C
Dimming	0-10V	0-10V	0-10V	0-10V	0-10V	0-10V

Dimming 0-10V 100% to 10%

Pro-Optic LED driver is compatible with 0-10V type dimming controls. Recommended dimming controls are listed below.

Control Manufacturer	Wallbox Dimmer	Power Booster Available
Douglas Lighting controls	WPC 5721	
Entertainment Technology	Tap Glide TG600FAM120 (120V) Tap Glide Heatsink TGH1500FAM120 (120V) Oasis OA2000FAMU (120/277V)	
Honeywell, Inc.	EL 7315A1019 and EL7315A1009	EL7305A1010
HUNT Dimming	Preset Slide: PS-010-IV-120V and PS-010-WH-120V Preset Slide: PS-010-3W-IV-120V and PS-010-3W-WH-120V Preset Slide: PS-010-IV-277V and PS-010-WH-277V Preset Slide: PS-010-3W-IV-277V and PS-010-3W-WH-277V Preset Slide, controls FD-010: PS-IFC-010-IV- and PS-IFC-010-WH-120/277V Preset Slide, controls FD-010: PS-IFC-010-3W-IV- and PS-IFC-010-3W-WH-120/277V Remoted mounted unit: FD-010-120V and FD-010-277V	
Lehigh Electric Products Co.	Solitaire	PBX
Leviton Lighting Controls Div.	Leviton Centura Fluorescent Control System IllumaTech™ IP7 Series	CN100 PE300
Lutron Electronics Co., Inc.	Visit www.lutron.com/advance for the latest control information and selection	
PDM Electrical products	WPC-5721	
Starfield Controls	TR61 with DALI interface port	RT03 DAL Inet router
The Watt Stopper, Inc.	LS4 used with LCD-101 and LCD-103	





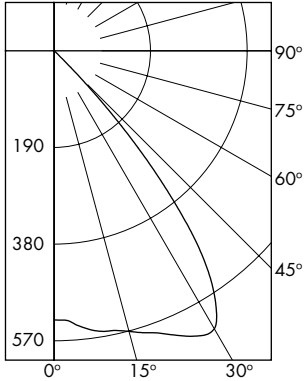
LED

8" Pro-Optic® LED
New Construction Downlight
P8103/P8121/P8133

Recessed

P8103-EB WITH P8121-21A/35K

LED Light Engine: 3500K, 80 CRI
 System Wattage: 18.5W
 Fixture Delivered Lumens: 895
 Fixture Efficacy: 48
 Spacing Criteria: 1.2



CANDELA DISTRIBUTION

DEG	CANDELA	LUMENS
0	529	
5	542	52
15	571	163
25	619	286
35	529	319
45	62	71
55	4	4
65	1	0
75	0	0
85	0	0
90	0	

Test No. 3517

Tested at 25°C Ambient in accordance to IESNA LM-79-2008

ZONAL LUMEN SUMMARY

ZONE	LUMENS	%LUMINAIRE
0-30	501	56.0
0-40	820	91.7
0-60	894	99.9
0-90	895	100.0
90-180	0	0.0
0-180	895	100.0

LUMINANCE DATA IN CANDELA/SQ. METER

Angle in Vertical	Average - 0°
45°	15105
55°	312
65°	141
75°	0
85°	0

COEFFICIENTS OF UTILIZATION

Zonal Cavity Method

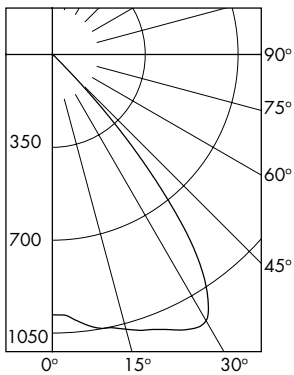
Room Cavity Ratio	% Effective Ceiling Cavity Reflectance										
	80%		70%		50%		30%		10%		
	70	50	30	10	70	50	30	10	50	30	10
	20% Effective Floor Cavity Reflectance										
	% Wall Reflectance										
	70	50	30	10	70	50	30	10	50	30	10
1	113	110	107	105	111	108	106	103	104	102	100
2	107	102	97	94	105	100	96	91	97	93	91
3	101	94	89	84	99	92	88	82	90	86	82
4	95	87	81	76	93	86	80	75	83	79	75
5	89	80	74	69	88	79	73	68	77	72	68
6	84	74	68	63	83	74	67	62	72	67	62
7	79	69	62	58	78	68	62	57	67	61	57
8	75	64	58	53	73	64	57	53	63	57	53
9	71	60	53	49	69	59	53	49	58	53	49
10	67	56	50	45	66	55	49	45	55	49	45

P8103-EB P8121-21A/35K

Test No. 3517

P8103-EB WITH P8133-21A/35K

LED Light Engine: 3500K, 80 CRI
 System Wattage: 32.9W
 Fixture Delivered Lumens: 1650
 Fixture Efficacy: 50 lm/watt
 Spacing Criteria: 1.2



CANDELA DISTRIBUTION

DEG	CANDELA	LUMENS
0	981	
5	1005	97
15	1072	305
25	1146	530
35	975	586
45	95	124
55	7	7
65	1	1
75	0	0
85	0	0
90	0	

Test No. 3795

Tested at 25°C Ambient in accordance to IESNA LM-79-2008

ZONAL LUMEN SUMMARY

ZONE	LUMENS	%LUMINAIRE
0-30	932	56.5
0-40	1518	92.0
0-60	1649	99.9
0-90	1650	100.0
90-180	0	0.0
0-180	1650	100.0

LUMINANCE DATA IN CANDELA/SQ. METER

Angle in Vertical	Average - 0°
45°	4413
55°	401
65°	78
75°	0
85°	0

COEFFICIENTS OF UTILIZATION

Zonal Cavity Method

Room Cavity Ratio	% Effective Ceiling Cavity Reflectance										
	80%		70%		50%		30%		10%		
	70	50	30	10	70	50	30	10	50	30	10
	20% Effective Floor Cavity Reflectance										
	% Wall Reflectance										
	70	50	30	10	70	50	30	10	50	30	10
1	113	110	108	105	111	108	106	103	104	102	100
2	107	102	97	94	105	100	96	93	97	93	91
3	101	94	89	84	99	93	88	84	90	86	82
4	95	87	81	76	93	86	80	76	84	79	75
5	90	80	74	69	88	79	74	69	78	72	68
6	84	75	68	63	83	74	68	63	72	67	63
7	79	69	63	58	78	69	62	58	67	62	58
8	75	64	58	53	74	64	58	53	63	57	53
9	71	60	54	49	70	60	53	49	59	53	49
10	67	56	50	46	66	55	50	45	55	49	45

P8103-EB P8133-21A/35K

Test No. 3795

