

# Alpha Trak Buying Guide

## Step 1: Choose your fixture(s)

### Gimbal



### Roundback



### Flatback



### Flair



### Hi-Tech



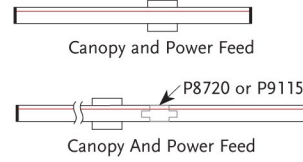
### Other Styles

### Other Styles

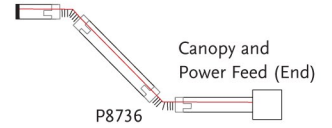


## Step 2: Plan your layout

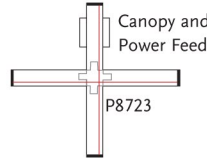
### Straight Runs



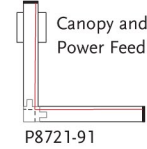
### Flex Connector



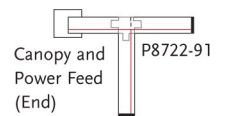
### Cross Layout



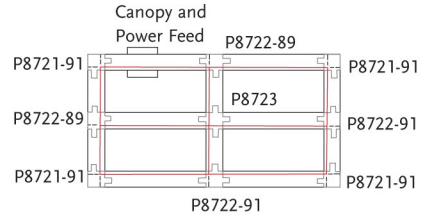
### "L" Layout



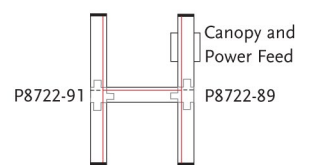
### "T" Layout



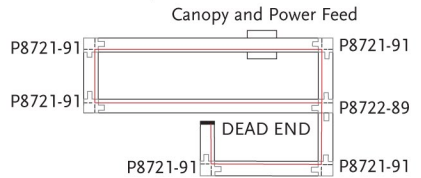
### Grid Layout



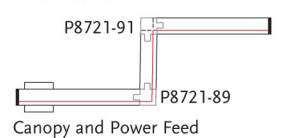
### "H" Layout



### Modified Grid Layout



### Dog Leg Layout



521

## Step 3: Power up!

### Surface Power



### End Power



### Remote Power

