

PFWS336M

Water Saving Two Handle Bar Faucet



Product Features

- 10" swing spout
- Washerless design
- Polished chrome finish
- Metal blade handles
- Solid brass waterways
- ADA and UFAS compliant metal handle

General Specifications

- 1.5 GPM water saving aerator
- 4" Centerset
- NSF/ANSI Std. 61 compliant
- UPC/IAPMO listed
- CSA certified



PFWS336M

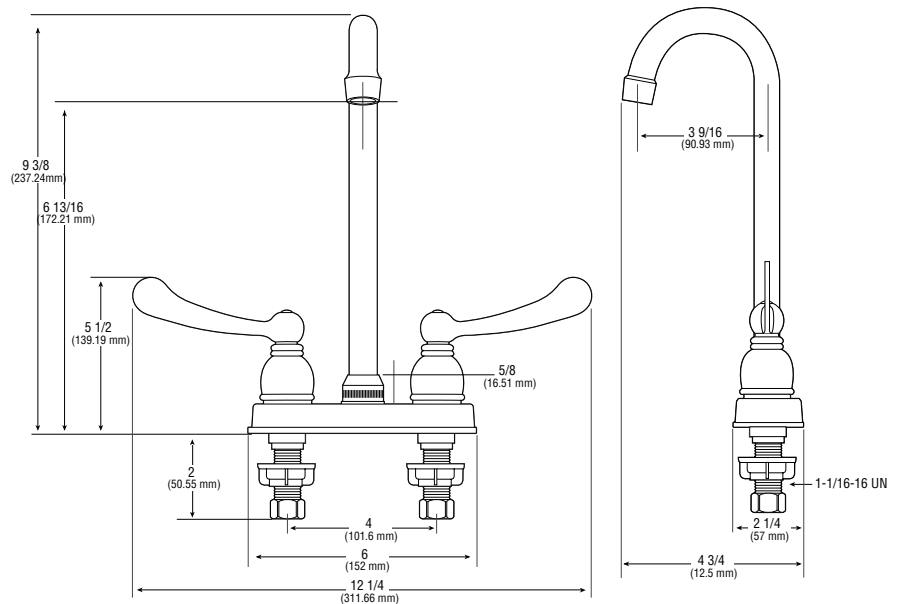
Model Numbers

PFWS336M 10" spout and ADA compliant metal wing handles

Product Specifications

Available Parts

- PF141191PK . . . Seat and spring set (2 each)
- PF141192PK . . . Hot cartridge
- PF141199PK . . . Cold cartridge
- PF141381PK . . . Hot lever handle
- PF141382PK . . . Cold lever handle
- PF143128PK . . . Chrome 2.0 GPM female aerator
- PF143129PK . . . Chrome 1.5 GPM female aerator



Warranty and Codes

This product comes complete with installation, operating, care and maintenance instructions. This PROFLO faucet carries a limited lifetime warranty. This product meets ANSI: A112.18.1M.

