

IMPORTANT SAFETY INFORMATION. READ AND FOLLOW ALL SAFETY INSTRUCTIONS. Follow label information and instructions concerning Wet or Damp Locations, installation near combustible materials, insulation, building materials, and proper lamping. Do not install in areas subject to combustible vapors or gases. Before wiring to power supply and during servicing or relamping, turn off power at fuse or circuit breaker. **All servicing or relamping must be performed by qualified service personnel. Product must be grounded to avoid potential electric shock or other potential hazard. Product must be mounted in locations and at heights and in a manner consistent with its intended use, and in compliance with the National Electrical Code and local codes.** The use of accessory equipment not recommended by the manufacturer or installed contrary to instructions may cause an unsafe condition. Do not block light emanating from product in whole or part, as this may cause an unsafe condition. Do not allow items such as drapes, curtains, screens or the like to come into contact with the product or to block light from the product, as this may cause an unsafe condition.

INSTALLATION INSTRUCTIONS ARCHITRAK® SYSTEM

IMPORTANT INSTRUCTIONS PRESCOLITE ONE/TWO CIRCUIT ARCHITRAK IMPORTANT SAFETY INSTRUCTIONS

WARNING when installing or using this track syste, basic safety precautions should always be followed, including the following:

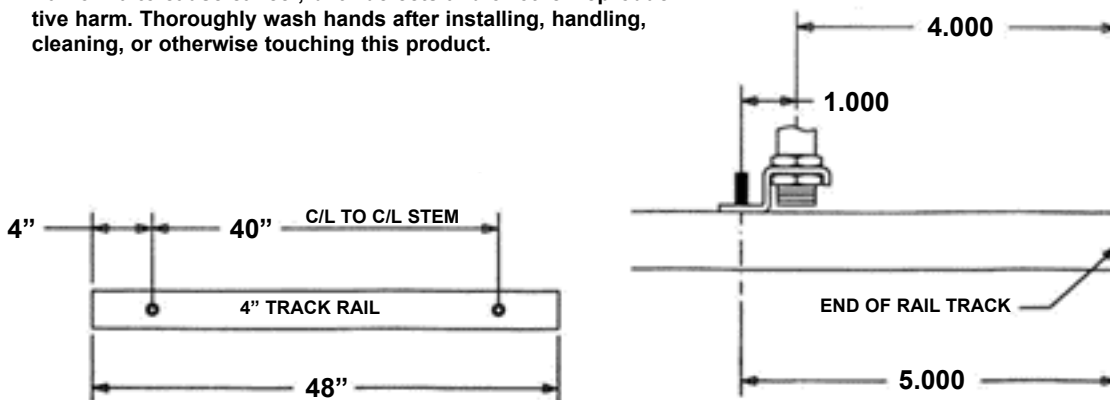
1. Read all of these installation instructions before installing the track system.
 2. Save these instructions and refer to them when additions to or changes in the track configuration are made.
 3. Do not install this track in damp or wet locations.
 4. Do not install any part of a track system less than 5 feet above the floor.
 5. Do not install any fixture assembly closer than 6 inches from any curtain or similar combustible material.
 6. Disconnect electrical power before adding to or changing the configuration of the track.
 7. Do not attempt to energize anything other than track lighting fixtures on the track. To reduce the risk of fire and electric shock, do not attempt to connect power tools, extension cords, appliances and the like to the track.
 8. **CAUTION**-This track system is not intended for use with power supply cord or convenience receptacle adaptor.
 9. **CAUTION**-To reduce the risk of fire electric shock, use only fixture assemblies marked for use with Prescolite track, and fittings marked for use with AKT series track.
 10. The track system is to be supplied by a single branch circuit 120V, 60HZ, 20A, or two single branch circuits 120V, 60HZ, 20A each.
 11. The tee bar clips, screws or stems are to be mounted in pre-drilled holes as follows:
 2 feet track-two places, one at each end of track,
 4 feet track-two places, one at each end of track for stem mounting at each end of track only,
 6 feet track-three places, one in center and one at each end of track,
 12 feet track-four places see diagram below.
 If track requires field cutting, refer to field cutting instructions.
- CAUTION**-The maximum capacity of the PRESCOLITE ONE/TWO CIRCUIT ARCHITRAK is 20 amps per circuit. When installing track in an apartment or home, do not exceed the capacity of your house current, which is usually 120 volts, 15 amps. Check your fuses and circuits carefully before installing, then add all of the wattage's of the lights that will be on that circuit. MAXIMIUM wattage for a 120V 15 amp circuit is 1800 watts.

INSTALLATION

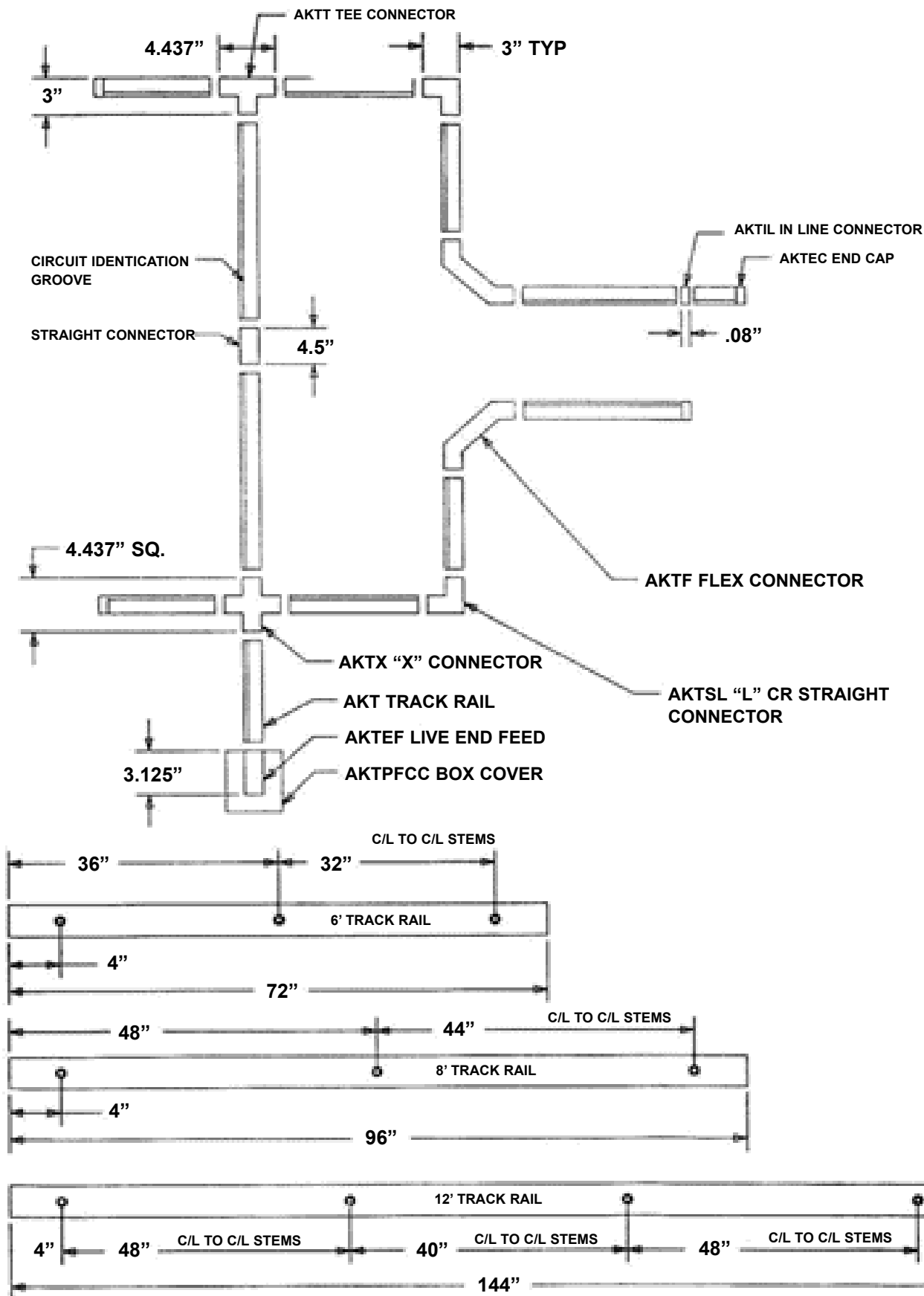
1. Refer to instructions provided with connectors, canopy kits for installation of these parts to the track rail.
2. When installing track on a dry wall ceiling carefully measure mounting holes in track or use track as a template. Drill holes large enough for toggle bolts, install rail. If track is to be mounted on a solid surface use #8 or #10 screws.
3. Be sure to align circuit identification groove in face of track rail when installing more than one track rail in a two circuit system.
4. Be sure to close any open end of track system with httec and cap when installation is complete

WARNING:

This Product contains chemicals known to the State of California to cause cancer, birth defects and/or other reproductive harm. Thoroughly wash hands after installing, handling, cleaning, or otherwise touching this product.



Instructions Sheet



® 701 Millennium Blvd., • Greenville, SC 29607
 With representatives offices in principal cities throughout North America.
 Copyright 2008, 09/12 revision, All Rights Reserved - Printed in U.S.A.

Hubbell Lighting, Inc.

