

❖ 97010-11 - Standard Carrier Kit

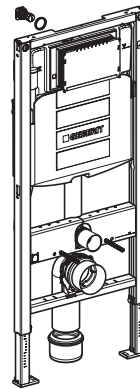
Wall Hung Bowl

- Design-matched to Porcher's Solutions™ Collection
- Bowl made of Vitreous China
- Everclean Surface® inhibits the growth of stain and odor causing bacteria, mold and mildew on the surface
- Dual Flush Water Consumption
1.6-0.8 gpf (6.0-3.0 Lpf)
- Meets EPA WaterSense® criteria
- 2-1/4" fully-glazed trapway
- 9-1/4" x 8-1/4" water surface area
- Includes plastic slow-close seat and cover with concealed seat ring

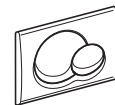


Geberit In-Wall Carrier & Tank (for Standard Frame)

- In-wall high-density polyethylene (HDPE) tank, insulated to prevent condensation
 - 16 gauge, powder coated, structural steel tubing in-wall carrier unit rated to 880 lbs. (400 kg) without damage to finished wall or carrier
 - Bowl rim height adjusts from 15" to 19" (381mm to 483mm)
 - Frame height 43" to 47" (1092mm to 1194mm) depending on desired bowl height
 - Includes Geberit Samba dual flush actuator
 - Includes installation and rough-in materials
- Lifetime warranty on chinaware, tank, and carrier;
10 year warranty on fill valve and flush valve; 1 year warranty on actuator flush panels and seat



**Geberit In-Wall
Carrier**



**Geberit Samba
Dual Flush Actuator**

Bowl Nominal Dimensions:

21" x 14-3/8" x 13-3/4" (533 x 365 x 350mm)

Water Closet Colors:



White
001

Kit Components:

- ❖ Wall Hung Bowl & Seat
- ❖ Geberit In-Wall Carrier & Tank (for Standard Frame)
- ❖ Samba Dual Flush Actuator

Optional Components:

- ❖ 47010-11 Wall Hung Bowl
- ❖ 77010-11 Slow Close Toilet Seat
- ❖ 81810-00 Bolero Dual Flush Actuator (for Standard Frame)

Bolero Dual Flush Actuator Finishes:

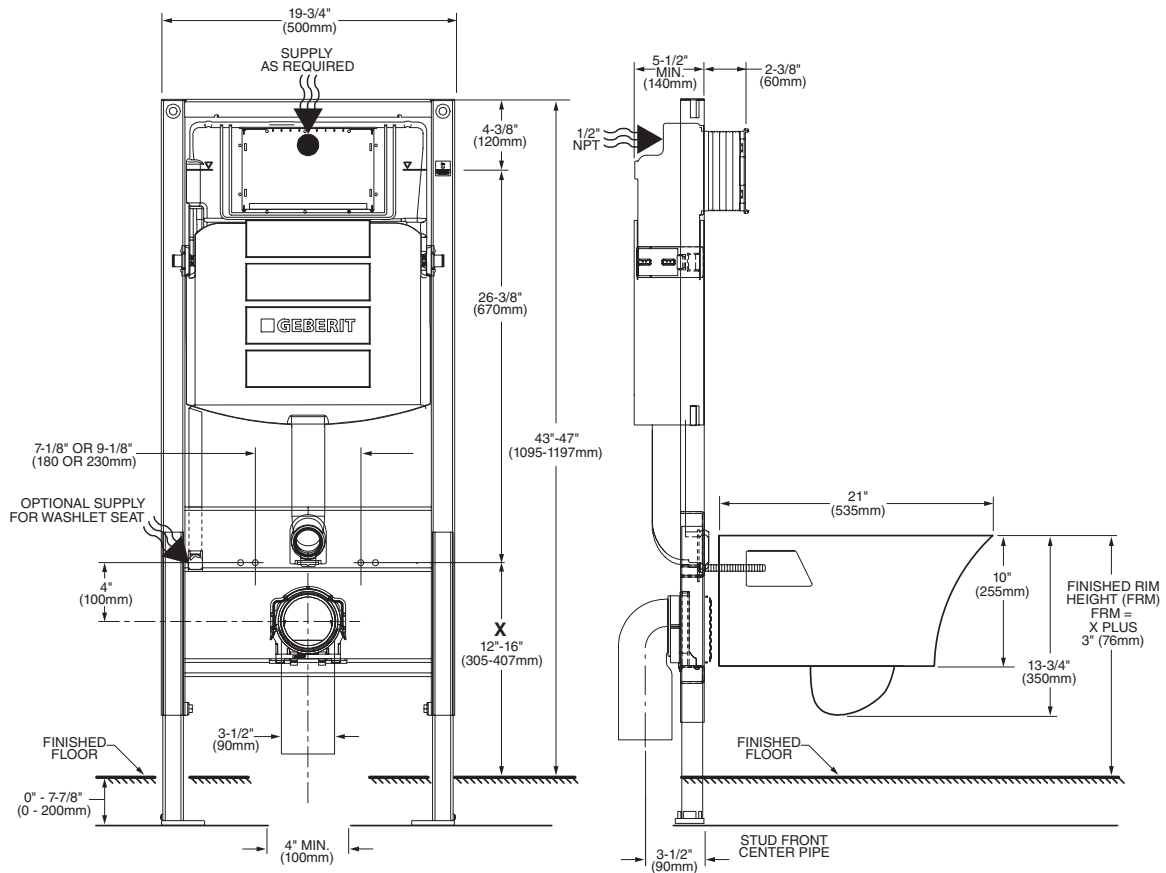


White
001

Chrome
100



ROUGH IN DIAGRAM SHOWN
ON REVERSE SIDE



NOTES:
SUPPLIES NOT INCLUDED WITH FIXTURE AND MUST BE ORDERED SEPARATELY.
DIMENSIONS SHOWN FOR LOCATION OF SUPPLY ARE SUGGESTED.

IMPORTANT: Dimensions of fixtures are nominal and may vary within the range of tolerances established by applicable ASME standards. These measurements are subject to change or cancellation. No responsibility is assumed for use of superseded or voided pages.



MEETS THE AMERICAN DISABILITIES ACT (ADA) GUIDELINES AND ANSI A117.1 REQUIREMENTS FOR ACCESSIBLE AND USABLE BUILDING FACILITIES - CHECK LOCAL CODES. WHEN INSTALLED SO TOP OF SEAT IS 432 TO 483MM (17" TO 19") FROM THE FINISHED FLOOR.

To Be Specified:

- Color:
- Supply with stop:

Compliance Certifications:

- Meets or Exceeds ASME A112.19.2 / CSA B45.1
- U.S. EPA WaterSense® Specification for HET's