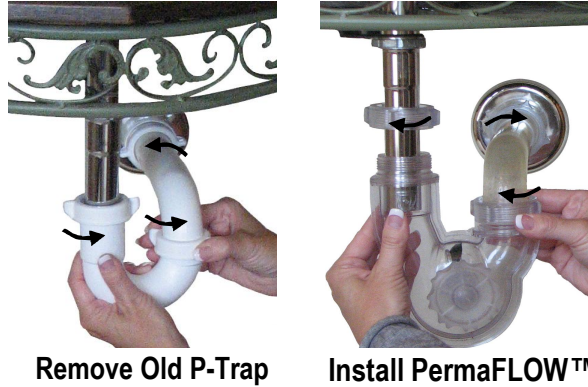
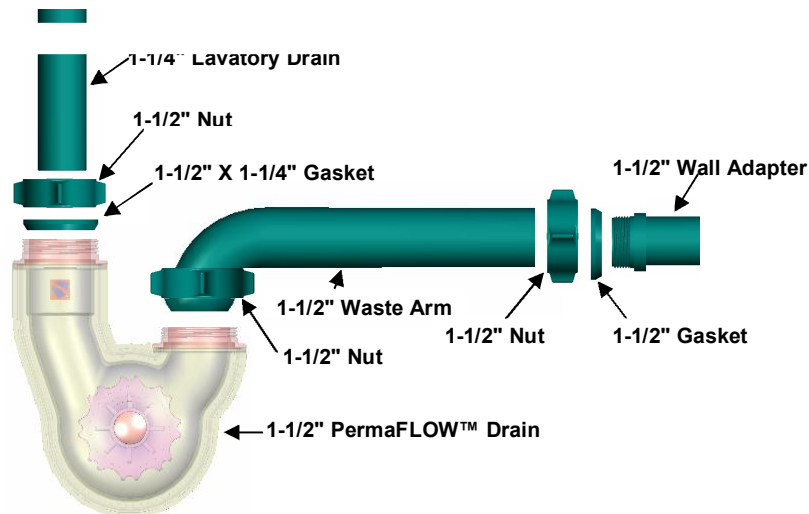


Installation:

PermaFLOW™ has been designed to the dimensional specifications of a conventional P-Trap for easy installation into an existing drainage system or for new building projects. It is compatible with both 1-1/2" and 1-1/4" drainage systems utilizing standard couplings and gaskets.



Kitchen Installation with 1-1/2" Sink Drain and 1-1/2" Wall Adapter

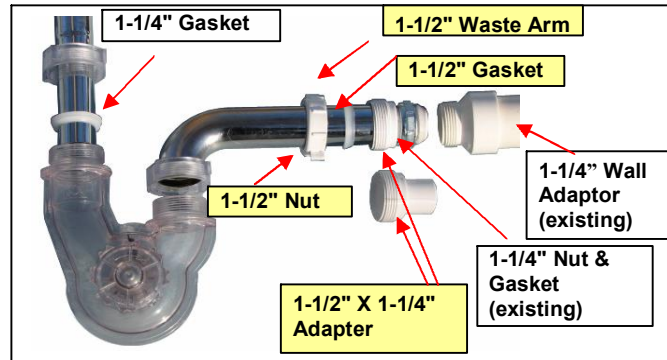
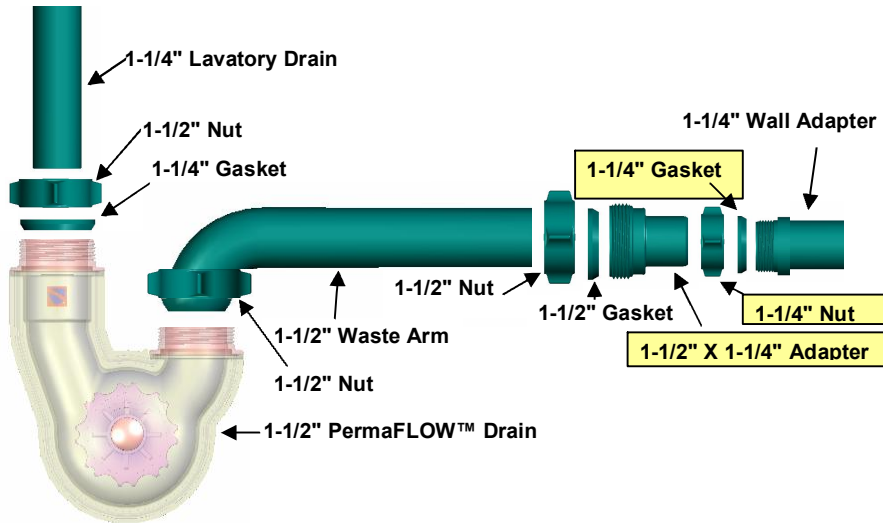


PermaFLOW Drain will retrofit into an existing P-trap installation.
This figure shows the components needed to install into a system with a 1-1/2" wall adapter.

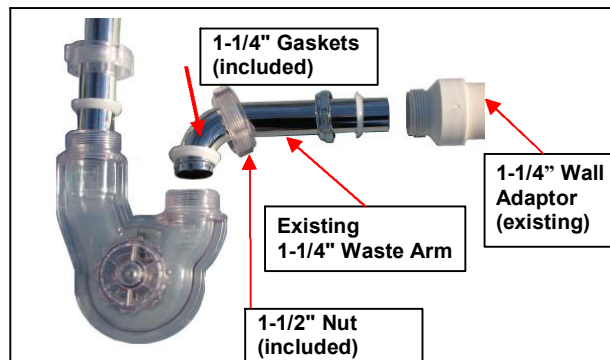
Bathroom Installation with 1-1/4" Sink Drain and 1-1/4" Wall Adapter

PermaFLOW™ Drain will retrofit into an existing P-trap installation.
 This figure shows the components needed to install into a system with a 1-1/4" wall adapter.

Note – Items in Yellow are not required if the wall adaptor is 1-1/2"



Note: If you have 1-1/4" piping on your bath lavatory, you can purchase the adapter kit shown in yellow at right from us or your local store (recommended install) or you can install the 1-1/4" gaskets provided as shown below



Operation:

When used as recommended, PermaFLOW™ should help you eliminate the use of dangerous chemicals and reduce service calls related to clogged drains. PermaFLOW™ has many features to help you manage your drain system.

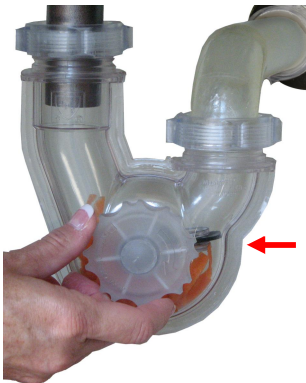
- See to locate, prevent and solve problems
- Self cleaning design eliminates most buildup
- Anyone can wipe to remove the worst clogs
- Flow restored fast; no messy drain removal
- By-pass option opens top chamber to flow
- The wiper can be used to retrieve articles
- Assists low flow, water conserving faucets to improve flow, reduce buildup, and save water

PermaFLOW™ was developed for easy operation.



Periodically turn the dial to remove buildup. (Monthly, or as needed)

To remove stubborn buildup, create a water surge with rapid wiper twists in both directions.



Emergency By-pass

If a blockage occurs, rotate the wiper to the by-pass position and continue to use your sink. When convenient, turn on the water and rotate wiper to clear the clog.

A. If an item is lost, turn off the water and rotate wiper to the 3 o'clock position to trap object.

B. Rotate to lift item to 9 o'clock where a wire hook or other tool can pull the item through the sink.

