

# Specification Data



## Panasonic Passive Inlet

### Description

Panasonic Passive Inlet provides make up air to help balance indoor vs. outdoor air pressure.

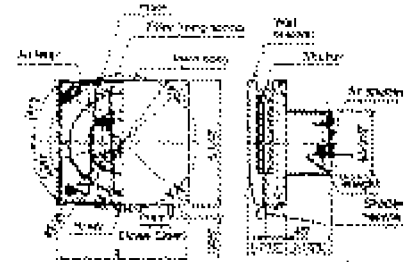
### Body:

- Durable ABS and PP resin body.
- Sturdy open/close lever.
- 2 Position air delivery (12 & 18 cfm).
- Washable air filter.
- Foam covering reduces outdoor noise and condensation.
- 12 inch through wall sleeve can be cut to required length.
- Exterior hood with bug screen included.

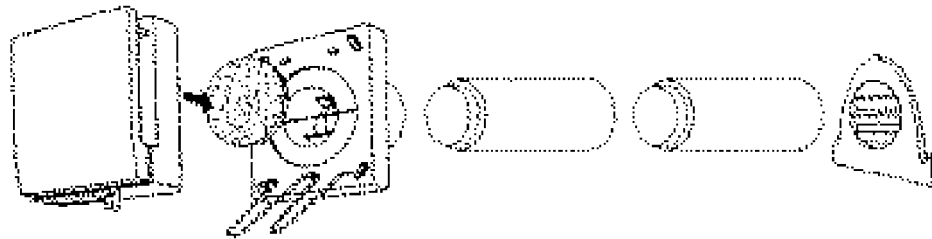
### Typical Specifications:

Passive Inlet vent shall be through-the-wall type with open/close lever. Inlet shall provide 12 or 18 cfm. Inlet shall include through wall sleeve and exterior hood. Inlet shall include air filter, bug screen and sound abatement padding.

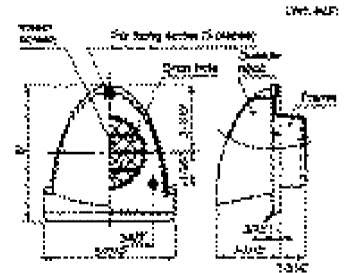
## FV-GKF32S1



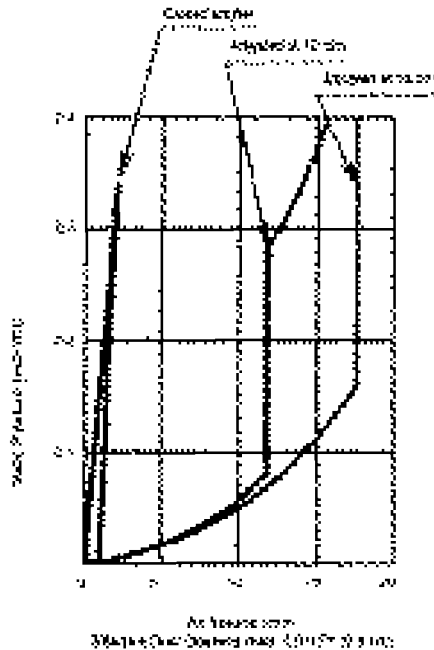
Interior Inlet



Exploded View



Exterior Hood



Exterior hood



Wall Sleeve

For Complete Installation Instructions Visit [www.panasonic.com/building](http://www.panasonic.com/building)

Model	Quantity	Comments	Project:
			Location:
			Architect:
			Engineer:
			Contractor:
			Submitted by:
			Date: