

### Specifications

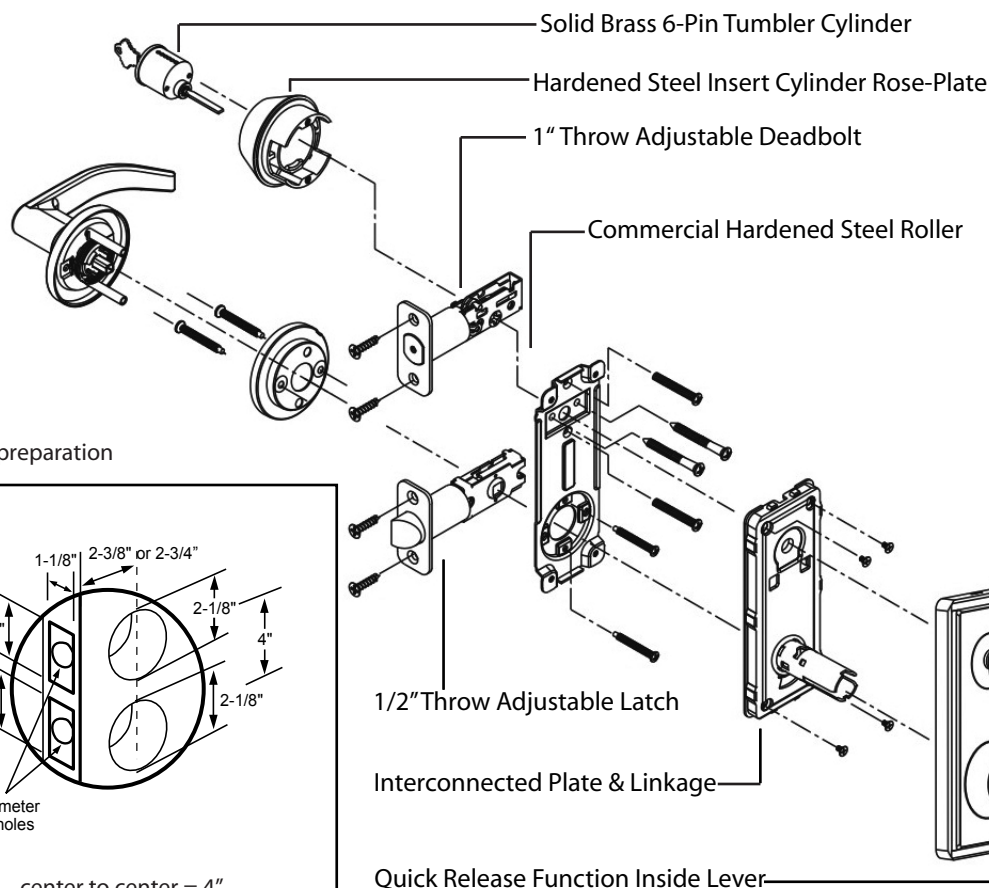
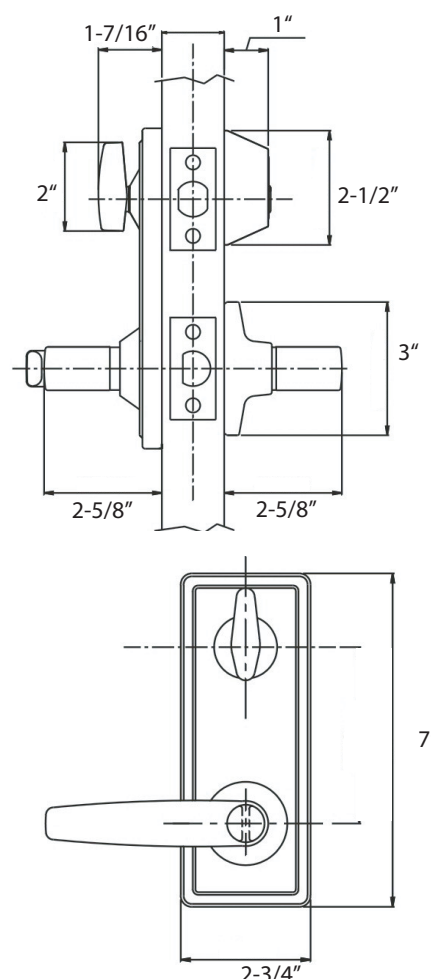
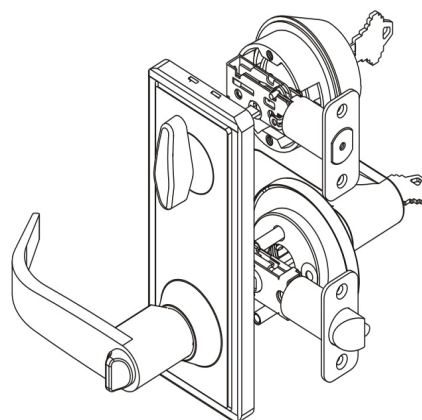
<b>Door Prep.</b>	Cross Bore: 2-1/8", Edge: 1-1/8", Center to Center: 4"
<b>Latch Backset</b>	Entry: Adjustable UL square corner deadlatch standard. Passage: Adjustable UL square corner Plainlatch standard. Deadbolt: Adjustable UL square corner deadbolt standard.
<b>Door Thickness</b>	1-3/8" to 1-3/4" standard.
<b>Cylinder</b>	6-pin SC "C" keyway solid brass cylinder standard. 5-pin KW keyway available.
<b>Faceplate</b>	1-1/8x2-1/4" square corner standard.
<b>Strike Plate</b>	Tubular locks: 2-3/4x1-1/8" square corner T-strike standard. Deadbolt: 2-3/4x1-1/8" square corner standard.
<b>Handing</b>	Reversible for left or right hand doors.
<b>Bolt</b>	Deadbolt: 1" throw, Lever: 1/2" throw
<b>ANS/BHMA</b>	Tubular locks: A 156.2 series 4000 Grade 2 Deadbolts: A156.5 series 4000 Grade 2
<b>UL Listed</b>	3 hours fire rated

Function	Description
<b>Single deadbolt w/ Entrance Lever</b>	Deadbolt is operated by key outside, and turnpiece inside. Lever locked or unlock by key outside and turnpiece inside. Inside lever retracts deadbolt and deadlatch simultaneously for panic exit.
<b>Single deadbolt w/ Passage Lever</b>	Deadbolt is operated by key outside, and turnpiece inside. Latchbolt retracted by lever from either side. Inside lever retracts deadbolt and deadlatch simultaneously for panic exit.

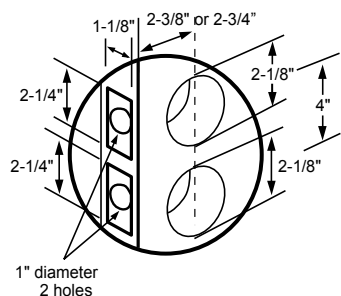
\*Finish Availability - US 15

# Daytona

## Interconnected Lock



Door preparation



center to center = 4"



**UL Listed**