



OLYMPIA FAUCETS, INC.
3325 S. Garfield Ave.
Commerce, CA 90040
(888) 772-7701
www.olympiafaucets.com

INSTALLATION

Tools:



Adjustable Wrench



Plumbers Putty



Teflon Tape



Rags

**Model Number: B-8170, B-8171, B-8180,
B-8181, B-8190, B-8191**

Warnings and Notes:

Check with local plumbing code requirements before installation.

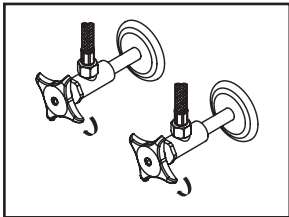
This product should be installed by a local listed plumber.

Do not use plumbers putty on threads.

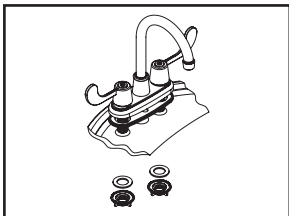


Installation Steps:

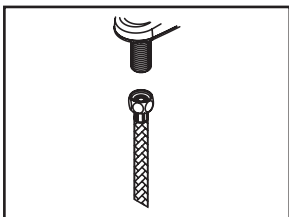
Two Handle Laundry Faucet



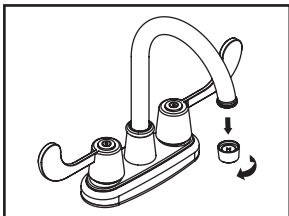
(1) Shut off water supplies. Remove old faucet. Clean mounting surface in preparation for new faucet.



(2) Apply plumbers putty under the base gasket, with base gasket on the bottom of deck plate, place faucet in position on the sink. Slide washers on shanks and secure the locknut to the shanks from underneath of the sink.

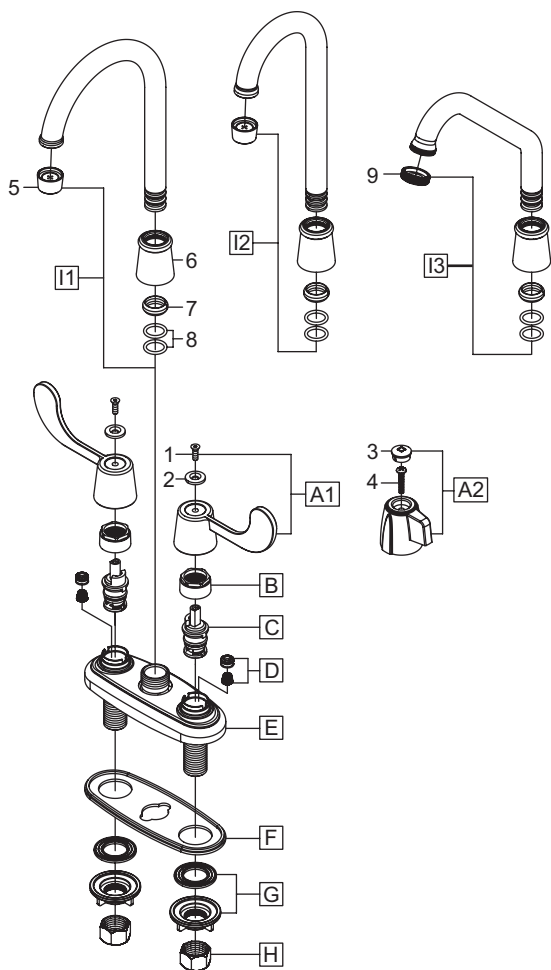


(3) when using stainless steel braided faucet supply hose; this faucet requires one end of the supply hose to have a 1/2" female IPS connection. The other end of this supply hose must match the thread on the water supply valve under your sink. Once you've identified the required size, carefully follow the manufacturer's installation instructions for each hose.



(4) Important: After installation is complete, remove aerator. Turn water supply on and allow both hot and cold water to run at least one minute each. While water is running, check for leaks. Turn off water and replace aerator.

Exploded Drawing:



	ITEM #	DESCRIPTION
A1	OP-190014C,H	ADA Wrist Blade Handle Cold, Hot (B-81X0 Handle)
A2	OP-190004C,H	Mini Blade Handle Cold, Hot (B-81X1 Handle)
B	OP-490040	Bonnet Nut
C	OP-390004	Cartridge-Brass Post
D	OP-490041	Springs and Seats
E	OP-450011	Deck Plate
F	OP-450012	Base Gasket
G	OP-590003	Mounting Locknut & Washer
H	OP-590001	Supply Nuts
I1	OP-250004	Gooseneck Spout (B-817X Spout)
I2	OP-250005	Gooseneck Spout (B-818X Spout)
I3	OP-250007	Hi-Rise Spout (B-819X Spout)
1	OP-450013	Handle Screw
2	OP-490001C,H	Cold & Hot Indicator
3	OP-490013C,H	Mini Blade Handle Button Cold, Hot
4	OP-490014	Screw
5	OP-490035	1.5 GPM Aerator
6	OP-450010	Spout Bonnet Nut
7	OP-490038	Spout Snap Ring
8	OP-490039	Spout O-ring
9	OP-450014	Hose Thread Adapter

OLYMPIA

For more care information or trouble shooting inquiries
about your Olympia product, Please call:
OLYMPIA FAUCETS, INC. (888) 772-7701
Monday-Friday 8 AM to 8 PM EST (5 AM to 5 PM PST)
www.olympiafaucets.com