

Model NRC98 Series Residential Condensing Tankless Water Heater Specification Sheet

- **Standard Input** - gas consumption ranges from 16,000 BTU/h to 180,000 BTU/h
- **Capacity Range** - flow rates from 0.5 gpm up to 9.8 gpm
- **Compact Design** - ANSI Z21.10.3/CSA 4.3 certified direct vent design that can be wall-mounted indoors
- **Durable Steel Casing with Polyester Coating**
- **Heat Exchanger** - manufactured with commercial grade copper, 25% thicker piping than standard models
- **Venting Options** - available as an indoor Direct Vent (-DV) model which includes special plastic flue adapters that are compatible with both 3" or 4" Schedule 40 and 80 PVC/CPVC pipe
- **Direct Electronic Ignition**
- **Quick-Connect** - two identical units can be linked together by using the optional Quick Connect Cord for twice the hot water capacity
- **Energy Factor** - 0.92 (NG) 0.94 (LP) for DV model
- **Thermal Efficiency** - fully condensing, 93% efficient for use with natural gas or propane
- **Temperature Controls** - includes remote thermostat attached to the front panel that can precisely adjust the output temperature from 100°F to 140°F and display temperatures in both °C and °F
- **Power Cord Installation Kit** - 6' power cord is included with -DV models
- **Safety Devices** - Flame Sensor, Overheat Prevention Device, Lightning Protection Device, Freeze Protection, Condensate Overfill
- **Additional Features** - Temperature Lockout, High Elevation Adjustment, Condensate Overflow Monitoring System
- **12-Year* Limited Heat Exchanger Warranty for Residential Use**
- **5-Year Limited Parts Warranty**
- **Approvals** - CSA, UPC**, NSF, Low NOx Approved By SCAQMD (Rule 1146.2), Suitable for Installation in a Manufactured (Mobile) Home***



DV Model



This model is eligible for the Federal tax credit of up to 10% of the water heater and installation costs (up to \$300) when installed in a residence between 1/1/2011 through 12/31/2011

Model

NRC98 - DV (Direct Vent)

Accessories

- Horizontal Hood Termination (#PVT-HL)
- PVC Termination (#VK3-H-PVC)
- Birdscreen for 3" PVC/CPVC (#VT3-PVCS)
- Birdscreen for 4" PVC/CPVC (#VT4-PVCS)
- Condensate Neutralizer (#NC-1)
- Isolation Valves (#IK-WV-200-1)
- Pipe Cover (#PC-3S)
- Quick Connect Cord (#QC-2)

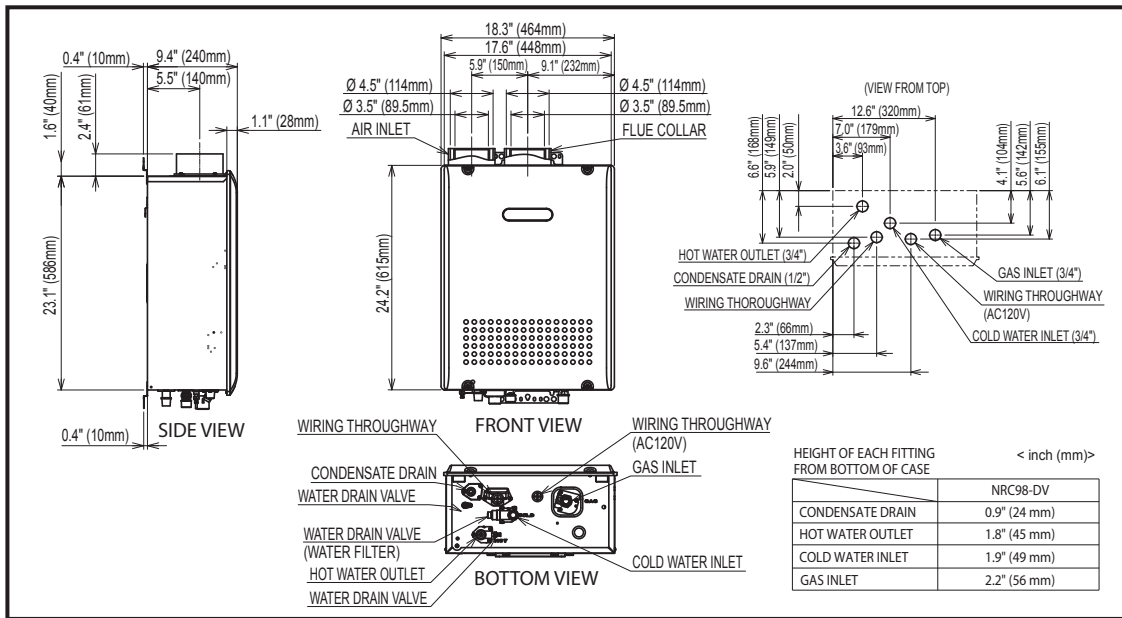


* Heat Exchanger warranty is maintained at 12 years or 6500 operational hours, whichever occurs first, when used in a single family dwelling in conjunction with a controlled recirculation system (an aquastat being the minimum pump control requirement) in accordance with the Installation Manual. Refer to the Noritz Limited Warranty for complete coverage details

** This product complies with California AB 1953 Low Lead Law

*** Manufactured (Mobile) Home approval is valid for **OD** and **DV** models only

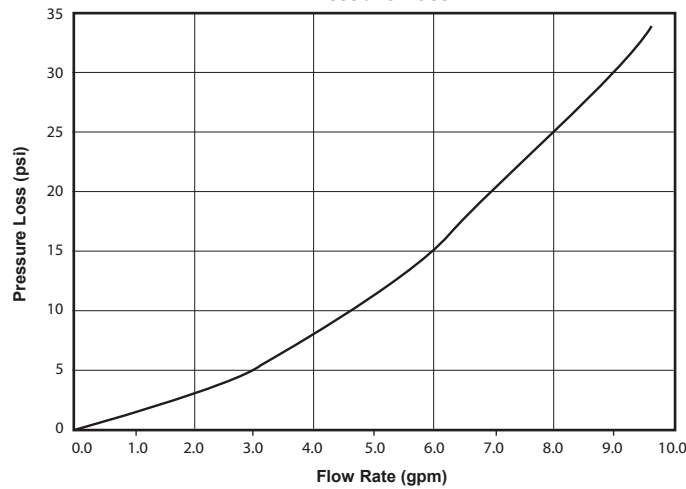
Dimensions



Flow Rates

Temperature Rise (°F)	30	40	45	50	60	70	80	90	100
Flow Rate (GPM)	9.8	8.4	7.5	6.7	5.6	4.8	4.2	3.7	3.4

Pressure Loss



Specifications

Model Name		NRC98-DV
Weight		60.4 (pounds)
Water Holding Capacity		0.4 Gallon (1.4 L)
Connection Sizes	Water Inlet	3/4"
	Hot Water Outlet	3/4"
	Gas Inlet	3/4"
	Condensate Drain	1/2"
Power	Supply	120VAC (60Hz), less than 4 amperes
	Consumption	NG: 68W LP: 71W Freeze Prevention 213W
Freeze Protection		Indoor: -30°F
Temperature Settings	°F Mode	100-140°F (In 5°F intervals) (9 Options)
	°C Mode	37-48°C (In 1°C intervals), 50, 55, 60°C (In 5°C intervals) (15 Options)
Default Temperature Options	°F Mode	120, 130, 140°F (Default is 120°F)
	°C Mode	50, 55, 60°C (Default is 50°C)