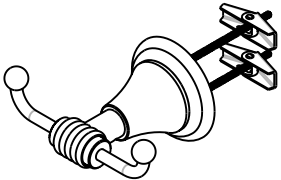
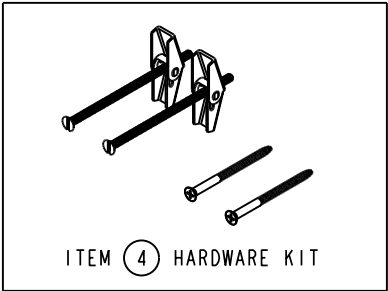


BILL OF MATERIAL (CURRENT LEVEL)				
ITEM	PT/ASSY	DESCRIPTION	TYPE	QTY.
1	7-607	BASE POST ASM	ASSEMBLY	1
2	10048	ESCUTCHEON W/S VALVE	PART	1
3	10095	ESCUTCHEON, 900 SERIES	PART	1
4	1-125	HARDWARE KIT	ASSEMBLY	1
5	1-120	SINGLE POST MTG. ASSEMBLY	ASSEMBLY	1



SCALE .250

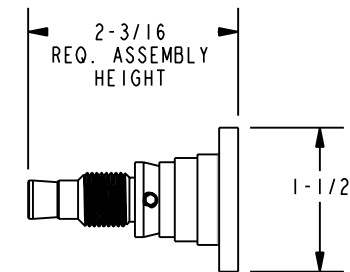
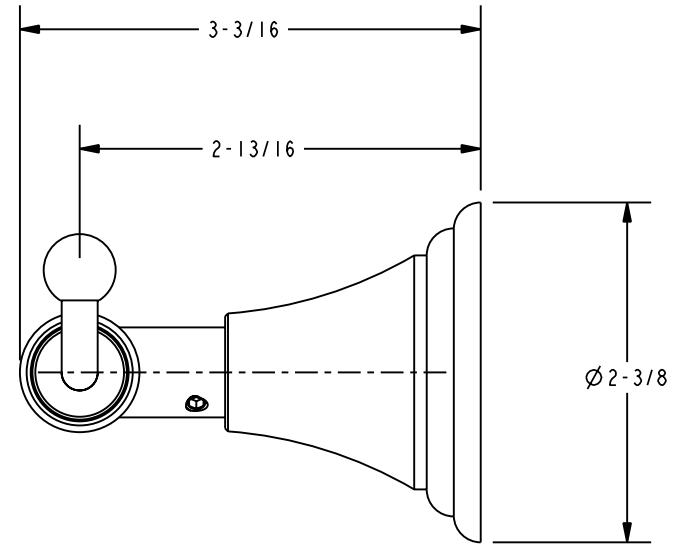
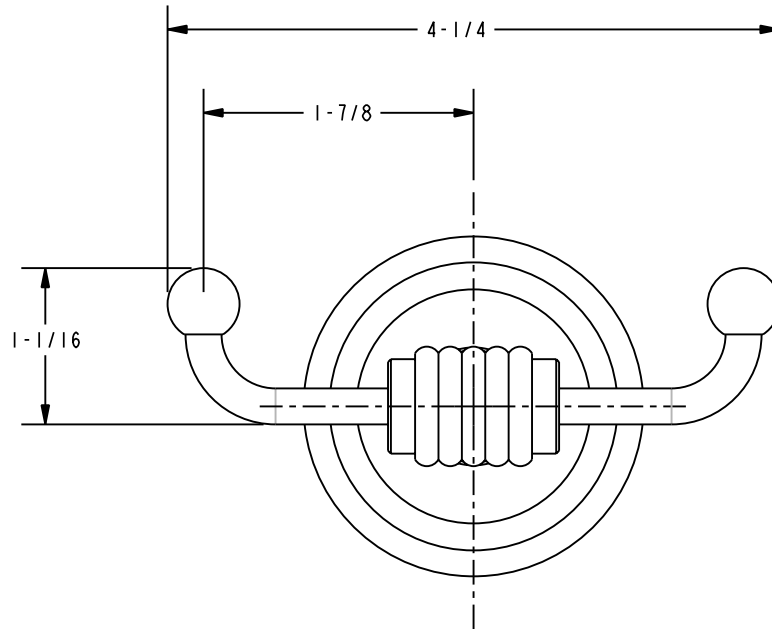
COPYRIGHT 2003 BRASSTECH, INC. THESE DRAWINGS AND THE DESIGNS DEPICTED HEREIN ARE THE PROPRIETARY PROPERTY OF BRASSTECH. ANY USE OR REPRODUCTION IS SUBJECT TO THE EXPRESS APPROVAL OF BRASSTECH. UNAUTHORIZED USE IS STRICTLY PROHIBITED. ALL RIGHTS RESERVED.

BRASSTECH
INCORPORATED
2001 E. CARNEGIE AVE.
SANTA ANA, CA 92705
(949) 417-5207

DOUBLE GARMENT HOOK ASM M2

ASSY. NO.		17-13		A	EO-0360	07/01/04
SCALE .500		REF. -		-	RELEASED	08/29/03
SHEET 1 OF 2		REV	REV DESC	DATE		

SPECIFICATION DWG



SCALE .500

DIMENSIONS ARE IN INCHES AND AN APPROXIMATION OF A TYPICAL INSTALLATION

COPYRIGHT 2004 BRASSTECH, INC. THESE DRAWINGS AND THE DESIGNS DEPICTED HEREIN ARE THE PROPRIETARY PROPERTY OF BRASSTECH. ANY USE OR REPRODUCTION IS SUBJECT TO THE EXPRESS APPROVAL OF BRASSTECH. UNAUTHORIZED USE IS STRICTLY PROHIBITED. ALL RIGHTS RESERVED.

BRASSTECH INCORPORATED		2001 E. CARNEGIE AVE. SANTA ANA, CA 92705 (949) 417-5207
DWG NO.	17-13	REV A
SCALE 1.000	REF. -	SHEET 2 OF 2