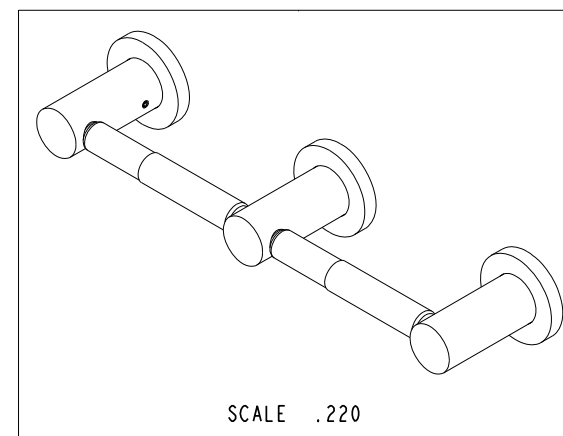


BILL OF MATERIAL (CURRENT LEVEL)

| ITEM | PT/ASSY | DESCRIPTION | TYPE | QTY. |
|------|---------|-----------------------------|----------|------|
| 1 | 40333 | ACCESSORY MTG BASE | PART | 3 |
| 2 | 40217 | CENTER POST DBL TISSUE HLDR | PART | 1 |
| 3 | 2-100 | ESCUTCHEON ASM | ASSEMBLY | 3 |
| 4 | 1-125 | HARDWARE KIT | ASSEMBLY | 3 |
| 5 | 10834 | POST (TISSUE/TOWEL) | PART | 2 |
| 6 | 92000 | SCREW 8 - 32 X 1/8 SS | PART | 3 |
| 7 | 2-184 | TISSUE ROLLER ASSEMBLY | ASSEMBLY | 2 |



COPYRIGHT 2005 BRASSTECH, INC. THESE DRAWINGS AND THE DESIGNS DEPICTED HEREIN ARE THE PROPRIETARY PROPERTY OF BRASSTECH. ANY USE OR REPRODUCTION IS SUBJECT TO THE EXPRESS APPROVAL OF BRASSTECH. UNAUTHORIZED USE IS STRICTLY PROHIBITED. ALL RIGHTS RESERVED.

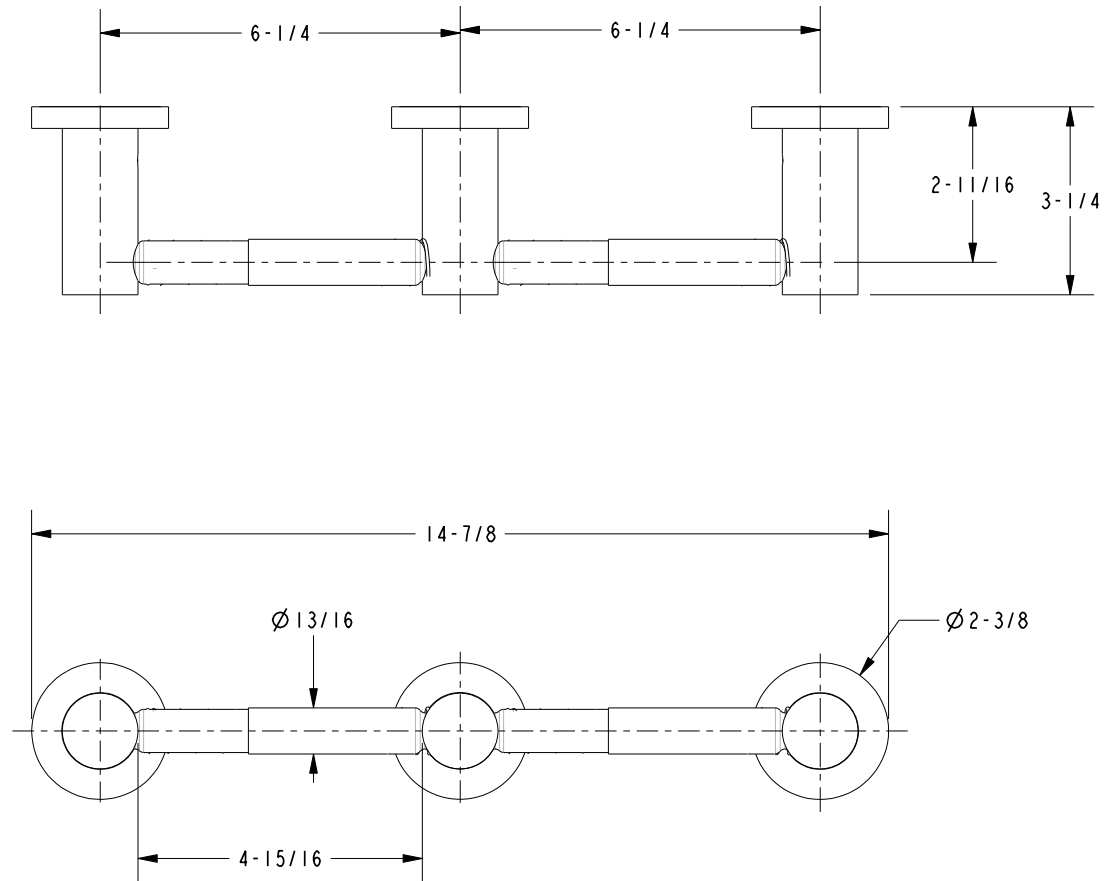
BRASSTECH
INCORPORATED

2001 E. CARNEGIE AVE.
SANTA ANA, CA 92705
(949) 417-5207

DOUBLE ROLL TISSUE HOLDER MI

| | | | | | |
|-----------------|--------|--------------|-----|----------|----------|
| ASSY. NO. 16-29 | | | A | EN-1241 | 11/27/09 |
| SCALE NONE | REF. - | SHEET 1 OF 2 | - | RELEASED | 09/04/03 |
| | | | REV | REV DESC | DATE |

SPECIFICATION DWG



DIMENSIONS ARE IN INCHES AND AN APPROXIMATION OF A TYPICAL INSTALLATION

COPYRIGHT 2005 BRASSTECH, INC. THESE DRAWINGS AND THE DESIGNS DEPICTED HEREIN ARE THE PROPRIETARY PROPERTY OF BRASSTECH. ANY USE OR REPRODUCTION IS SUBJECT TO THE EXPRESS APPROVAL OF BRASSTECH. UNAUTHORIZED USE IS STRICTLY PROHIBITED. ALL RIGHTS RESERVED.

| | | | |
|------------------|-------|--|----------|
| BRASSTECH | | 2001 E. CARNEGIE AVE. SANTA ANA, CA 92705 (949) 417-5207 | |
| INCORPORATED | | | |
| DWG NO. | 16-29 | | REV A |
| SCALE | .300 | REF. | - |
| SHEET | | 2 | OF 2 |