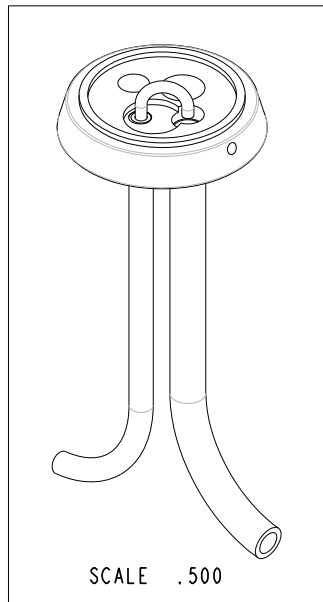
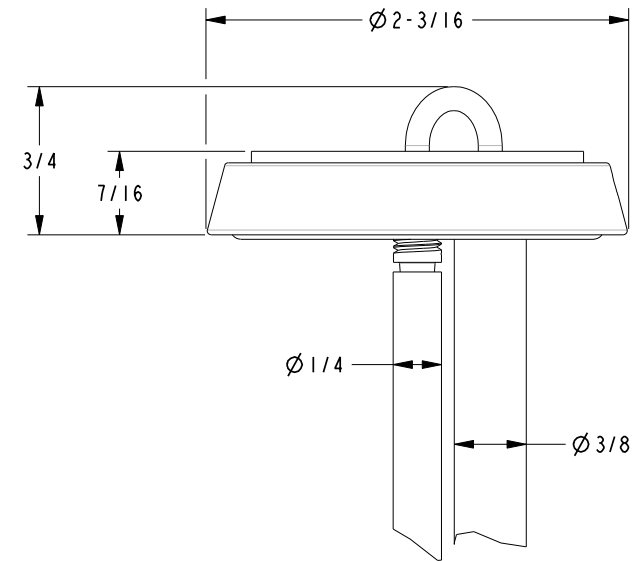
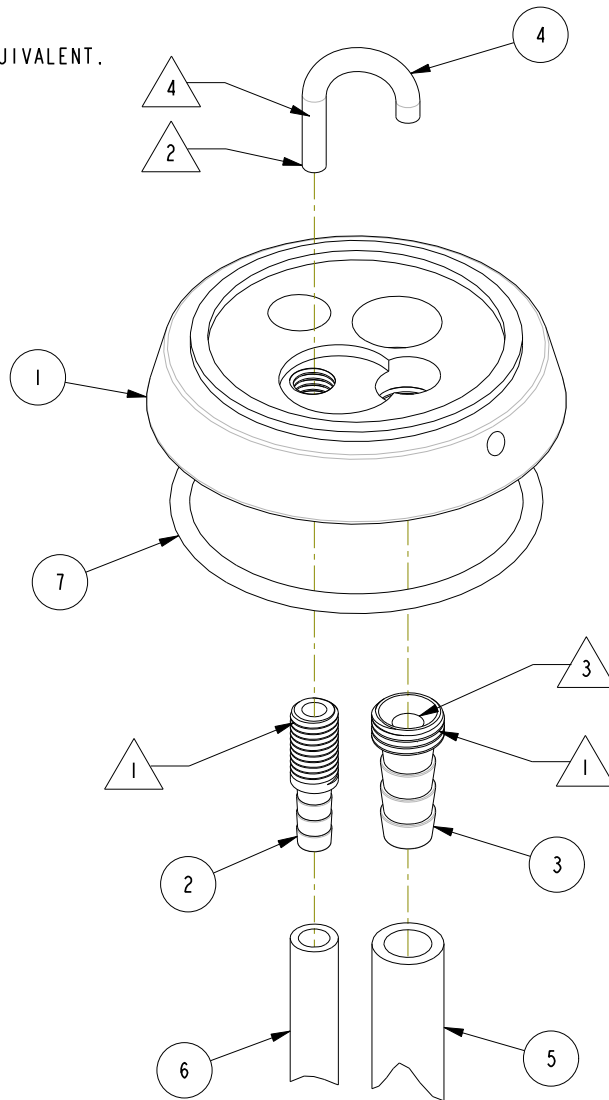


NOTE:

- 1 APPLY ADHESIVE LOCTITE 680.
- 2 APPLY 3M SCOTCH-WELD DP-100NS OR EQUIVALENT.
- 3 REMOVE METAL BURRS.
- 4 SCORE SURFACE.

BILL OF MATERIAL (CURRENT LEVEL)

ITEM	PT/ASSY	DESCRIPTION	TYPE	QTY.
1	12090	ESCUTCHEON, AIR GAP	PART	1
2	50772	1/4" BARBED TUBE FITTING	PART	1
3	50789	3/8" BARBED TUBE FITTING	PART	1
4	50774	AIR GAP TUBE	PART	1
5	91380	TUBE, BLACK 3/8 OD X 4 FT	PART	1
6	91381	TUBE, BLACK 1/4 OD X 4 FT	PART	1
7	91394	O-RING #2-132	PART	1



COPYRIGHT 2005 BRASSTECH, INC. THESE DRAWINGS AND THE DESIGNS DEPICTED HEREIN ARE THE PROPRIETARY PROPERTY OF BRASSTECH. ANY USE OR REPRODUCTION IS SUBJECT TO THE EXPRESS APPROVAL OF BRASSTECH. UNAUTHORIZED USE IS STRICTLY PROHIBITED. ALL RIGHTS RESERVED.

BRASSTECH
INCORPORATED
2001 CARNEGIE AVE.
SANTA ANA, CA 92705
(949) 417-5207

AIR GAP ASSEMBLY, VESPERA

ASSY. NO.	6-291	-	-	-
SCALE	1.000	REF.	-	-
SHEET	1	OF	1	REV
REV	EN-2186	REV DESC	06/27/12	DATE