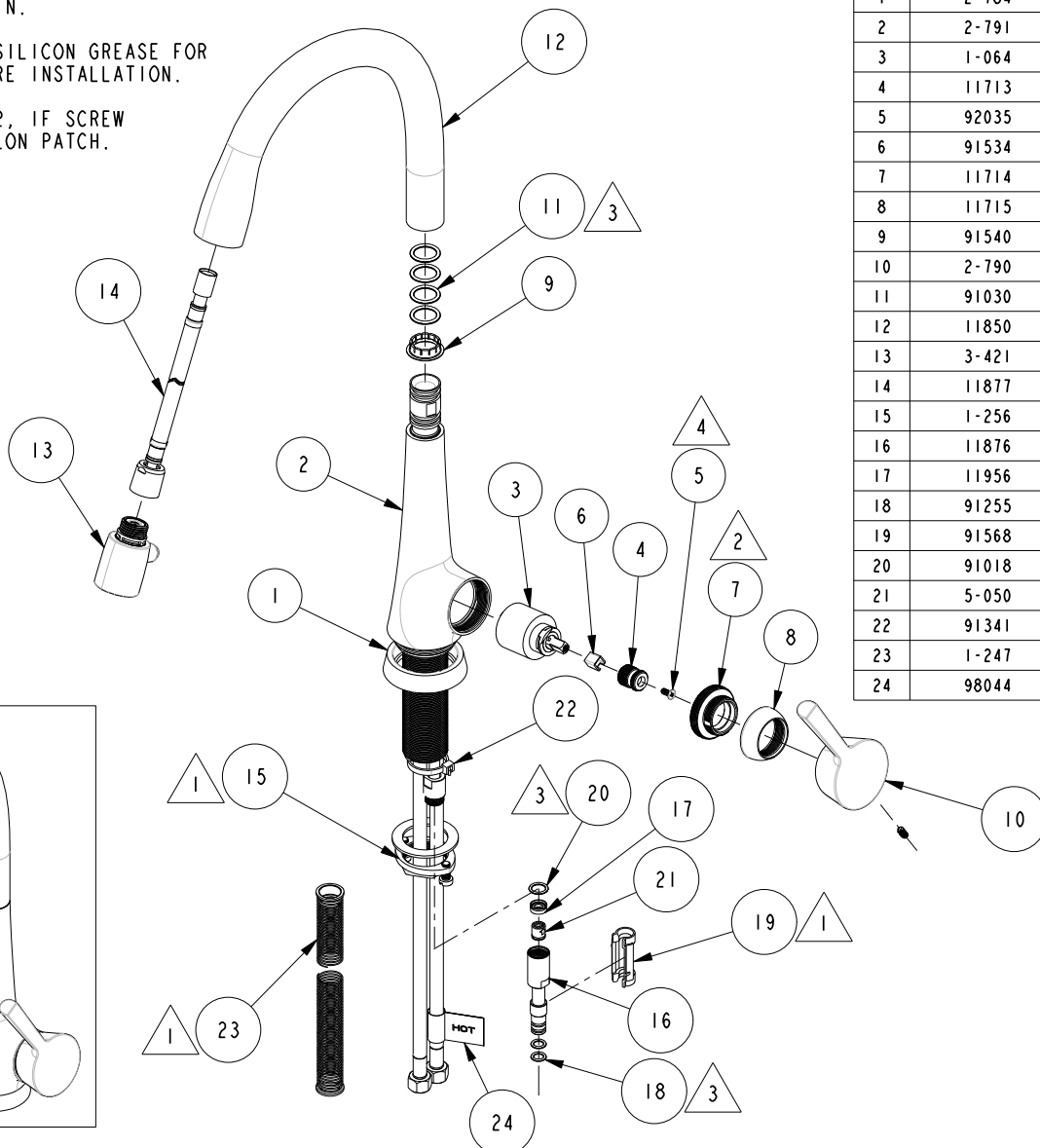


NOTES:

1. PUT THESE ITEMS IN SEPARATE PLASTIC BAGS.
2. TORQUE TO 20 LB-IN.
3. APPLY THIN COAT SILICON GREASE FOR ALL O-RINGS BEFORE INSTALLATION.
4. APPLY LOCTITE 242, IF SCREW DOES NOT HAVE NYLON PATCH.



BILL OF MATERIAL (CURRENT LEVEL)

ITEM	PT/ASSY	DESCRIPTION	TYPE	QTY.
1	2-784	BASE RING ASM	ASSEMBLY	1
2	2-791	MAIN BODY ASM , VESSA	ASSEMBLY	1
3	1-064	SINGLE LEVER CARTRIDGE	PART	1
4	11713	CARTRIDGE STEM ADAPTER	PART	1
5	92035	SCREW- FLT HD M4 X .7 X 10mm	PART	1
6	91534	CARTRIDGE STEM INSERT	PART	1
7	11714	CARTRIDGE RETAINER	PART	1
8	11715	CARTRIDGE CAP	PART	1
9	91540	SWIVEL SLEEVE, BOTTOM	PART	1
10	2-790	HANDLE ASM	ASSEMBLY	1
11	91030	O-RING #2-115	PART	4
12	11850	SPOUT, SMALL-VESSA	PART	1
13	3-421	SPRAY HEAD, VESPERA-PREP	ASSEMBLY	1
14	11877	HOSE, PULldOWN SWIVEL	ASSEMBLY	1
15	1-256	MOUNTING KIT	ASSEMBLY	1
16	11876	OUTLET ADAPTER, LOWER	PART	1
17	11956	FLOW REGULATOR, 1.75 GPM, LIGHT BLUE	PART	1
18	91255	O-RING, (PARKER #2-011)	PART	2
19	91568	RETAINER CLIP	PART	1
20	91018	O-RING (#2-013)	PART	1
21	5-050	CHECK VALVE, NEOPERL DW10, WHITE	PART	1
22	91341	ZIP TIE	PART	1
23	1-247	SPRING RETRACTION	ASSEMBLY	1
24	98044	LABEL - HOT	PART	1

COPYRIGHT 2005 BRASSTECH, INC. THESE DRAWINGS AND THE DESIGNS DEPICTED HEREIN ARE THE PROPRIETARY PROPERTY OF BRASSTECH. ANY USE OR REPRODUCTION IS SUBJECT TO THE EXPRESS APPROVAL OF BRASSTECH. UNAUTHORIZED USE IS STRICTLY PROHIBITED. ALL RIGHTS RESERVED.

BRASSTECH
INCORPORATED
2001 E. CARNEGIE AVE.
SANTA ANA, CA 92705
(949) 417-5207

VESPERA PULL DOWN - KITCHEN FAUCET

ASSY. NO.

2500-5113

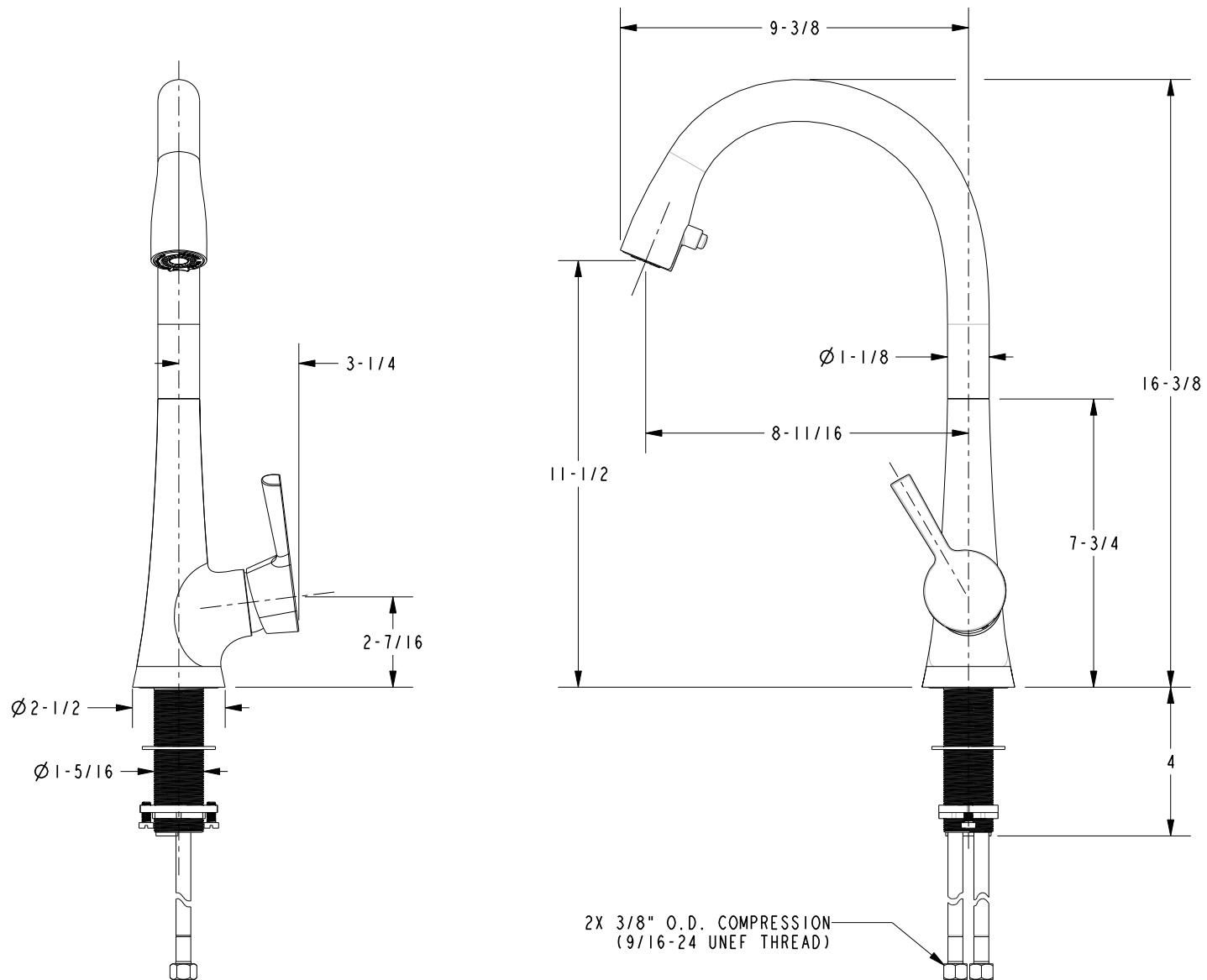
SCALE .180

REF. -

SHEET 1 OF 2

C	EN-2211	07/06/12
B	EN-2181	06/04/12
A	EN-1552-4A	09/08/11
-	EN-1552-4	08/03/11
REV	REV DESC	DATE

SPECIFICATION DWG



DIMENSIONS ARE IN INCHES AND AN APPROXIMATION OF A TYPICAL INSTALLATION

COPYRIGHT 2005 BRASSTECH, INC. THESE DRAWINGS AND THE DESIGNS DEPICTED HEREIN ARE THE PROPRIETARY PROPERTY OF BRASSTECH. ANY USE OR REPRODUCTION IS SUBJECT TO THE EXPRESS APPROVAL OF BRASSTECH. UNAUTHORIZED USE IS STRICTLY PROHIBITED. ALL RIGHTS RESERVED.

BRASSTECH
INCORPORATED

2001 CARNEGIE AVE.
SANTA ANA, CA 92705
(949) 417-5207

DWG NO.

2500-5113

REV

C

SCALE .230

REF. -

SHEET 2 OF 2