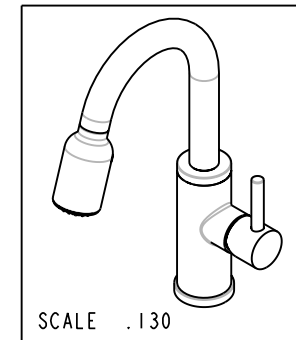
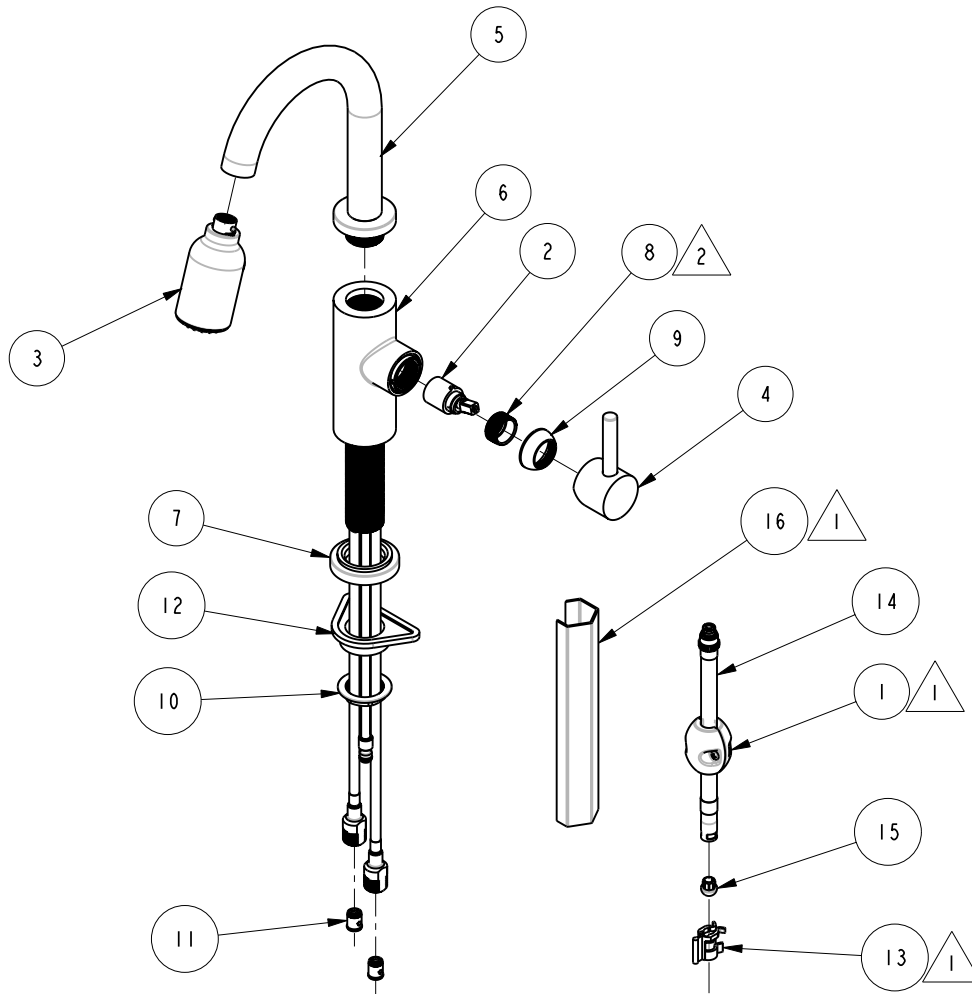


BILL OF MATERIAL (CURRENT LEVEL)

ITEM	PT/ASSY	DESCRIPTION	TYPE	QTY.
1	1-173	WEIGHT ASM	ASSEMBLY	1
2	1-183	CARTRIDGE ASM	ASSEMBLY	1
3	2-497	PULL-DOWN SPRAY, CONTEMP	ASSEMBLY	1
4	2-508	HANDLE ASM, CONTEMP	ASSEMBLY	1
5	2-537	SPOUT AND NUT ASM, CONTEMP	ASSEMBLY	1
6	2-539	MAIN BODY ASM, CONTEMP	ASSEMBLY	1
7	2-541	BASE RING ASM, CONTEMP	ASSEMBLY	1
8	11247	CARTRIDGE RETAINER	PART	1
9	11252	CARTRIDGE CAP	PART	1
10	11284	MOUNTING NUT, 1 5/16-18	PART	1
11	11331	CHECK VALVE	PART	2
12	91304	MOUNTING FLANGE - PLASTIC	PART	1
13	91401	CLIP QC	PART	1
14	91404	FLEX HOSE, 65"	ASSEMBLY	1
15	91426	CAP, HOSE LEAD	PART	1
16	T-1011	FLANGE NUT WRENCH	PART	1

NOTES:

- 1. PUT THESE ITEMS IN A PLASTIC BAG.
- 2. TORQUE TO: 17 LB-IN.



COPYRIGHT 2005 BRASSTECH, INC. THESE DRAWINGS AND THE DESIGNS DEPICTED HEREIN ARE THE PROPRIETARY PROPERTY OF BRASSTECH. ANY USE OR REPRODUCTION IS SUBJECT TO THE EXPRESS APPROVAL OF BRASSTECH. UNAUTHORIZED USE IS STRICTLY PROHIBITED. ALL RIGHTS RESERVED.

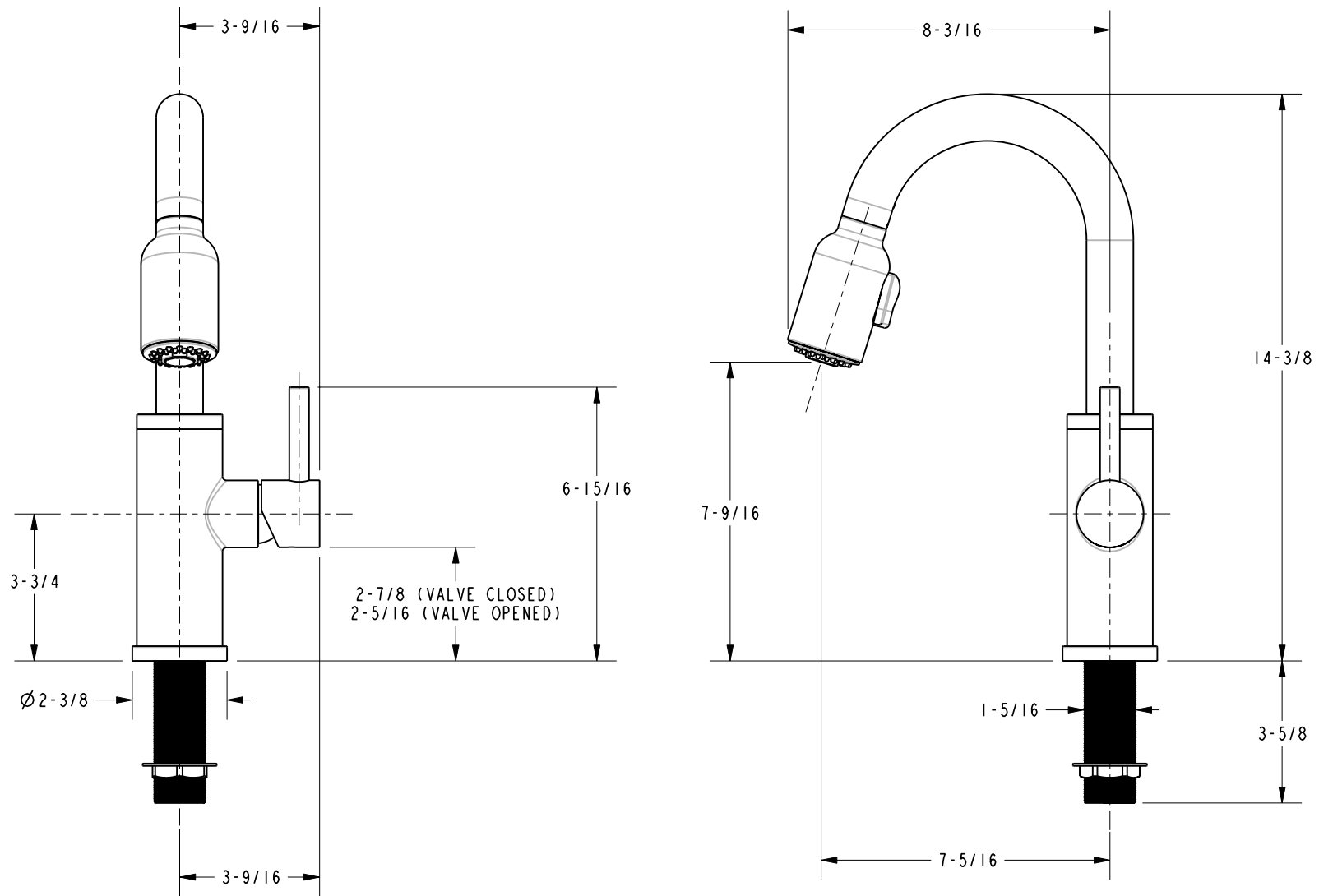
BRASSTECH
INCORPORATED
2001 E. CARNEGIE AVE.
SANTA ANA, CA 92705
(949) 417-5207

PULL DOWN KITCHEN, CONTEMP

ASSY. NO.	99P		
SCALE .150	REF. -	SHEET 1 OF 2	REV
			REV DESC
			DATE

A	EO-0734	06/22/06
-	EO-0520	08/15/05

SPECIFICATION DWG



DIMENSIONS ARE IN INCHES AND AN APPROXIMATION OF A TYPICAL INSTALLATION

COPYRIGHT 2005 BRASSTECH, INC. THESE DRAWINGS AND THE DESIGNS DEPICTED HEREIN ARE THE PROPRIETARY PROPERTY OF BRASSTECH. ANY USE OR REPRODUCTION IS SUBJECT TO THE EXPRESS APPROVAL OF BRASSTECH. UNAUTHORIZED USE IS STRICTLY PROHIBITED. ALL RIGHTS RESERVED.

BRASSTECH		2001 E. CARNEGIE AVE.
INCORPORATED		SANTA ANA, CA 92705
		(949) 417-5207
DWG NO.	99P	REV A
SCALE	.250	REF. -
		SHEET 2 OF 2