

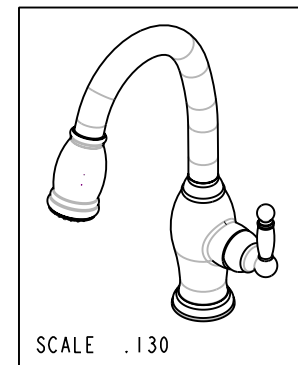
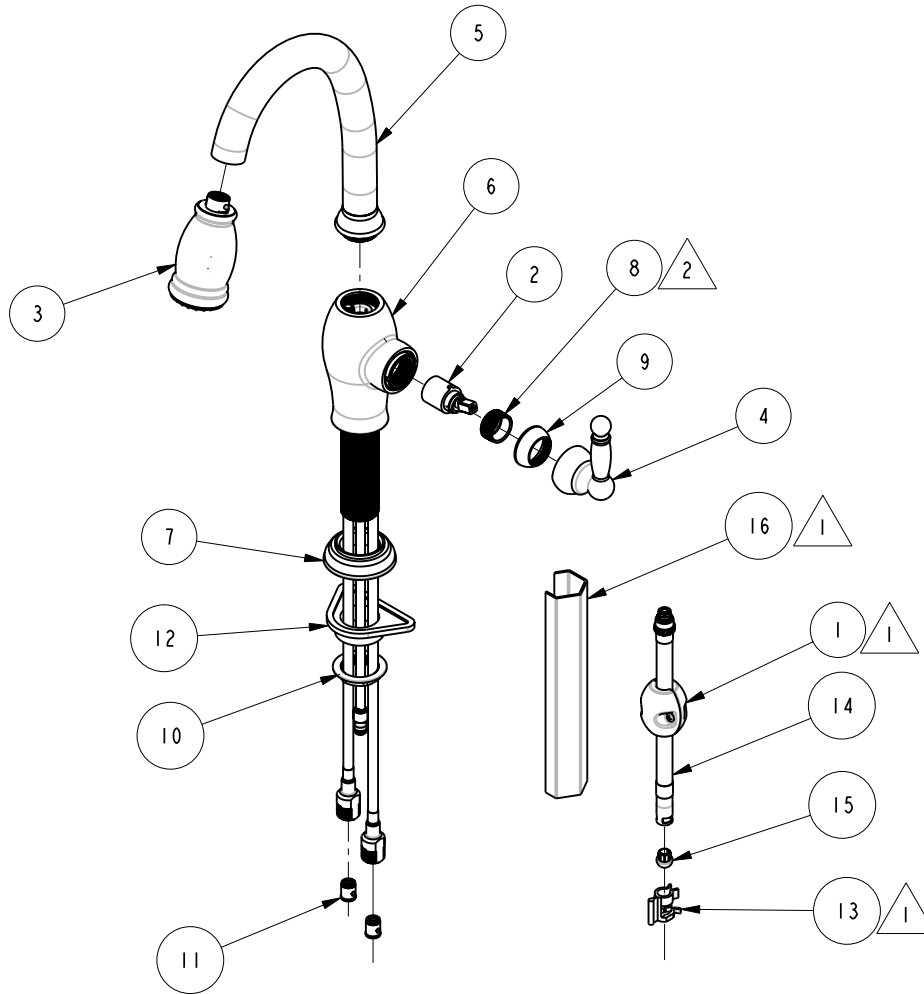
NOTES:

1. PUT THESE ITEMS IN A PLASTIC BAG.

2. TORQUE TO : 17 LB-IN.

BILL OF MATERIAL (CURRENT LEVEL)

| ITEM | PT/ASSY | DESCRIPTION               | TYPE     | QTY. |
|------|---------|---------------------------|----------|------|
| 1    | 1-173   | WEIGHT ASM                | ASSEMBLY | 1    |
| 2    | 1-183   | CARTRIDGE ASM             | ASSEMBLY | 1    |
| 3    | 2-498   | PULL-DOWN SPRAY, TRAD     | ASSEMBLY | 1    |
| 4    | 2-509   | HANDLE ASM                | ASSEMBLY | 1    |
| 5    | 2-536   | SPOUT AND NUT ASM, TRAD   | ASSEMBLY | 1    |
| 6    | 2-538   | MAIN BODY ASM, TRAD       | ASSEMBLY | 1    |
| 7    | 2-540   | BASE RING ASM, TRAD       | ASSEMBLY | 1    |
| 8    | 11247   | CARTRIDGE RETAINER        | PART     | 1    |
| 9    | 11252   | CARTRIDGE CAP             | PART     | 1    |
| 10   | 11284   | MOUNTING NUT, 1 5/16-18   | PART     | 1    |
| 11   | 11331   | CHECK VALVE               | PART     | 2    |
| 12   | 91304   | MOUNTING FLANGE - PLASTIC | PART     | 1    |
| 13   | 91401   | CLIP QC                   | PART     | 1    |
| 14   | 91404   | FLEX HOSE, 65"            | ASSEMBLY | 1    |
| 15   | 91426   | CAP, HOSE LEAD            | PART     | 1    |
| 16   | T-1011  | FLANGE NUT WRENCH         | PART     | 1    |



COPYRIGHT 2005 BRASSTECH, INC. THESE DRAWINGS AND THE DESIGNS DEPICTED HEREIN ARE THE PROPRIETARY PROPERTY OF BRASSTECH. ANY USE OR REPRODUCTION IS SUBJECT TO THE EXPRESS APPROVAL OF BRASSTECH. UNAUTHORIZED USE IS STRICTLY PROHIBITED. ALL RIGHTS RESERVED.

**BRASSTECH**  
INCORPORATED  
2001 E. CARNEGIE AVE.  
SANTA ANA, CA 92705  
(949) 417-5207

PULL DOWN KITCHEN, TRAD

ASSY. NO.

94P

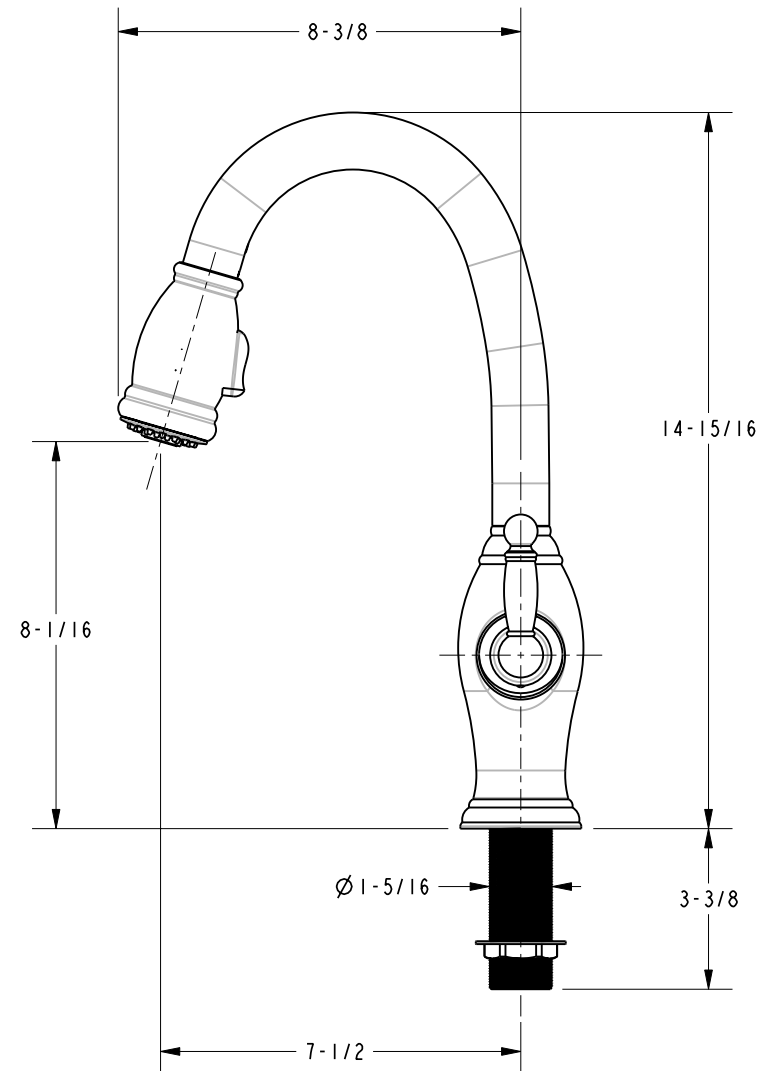
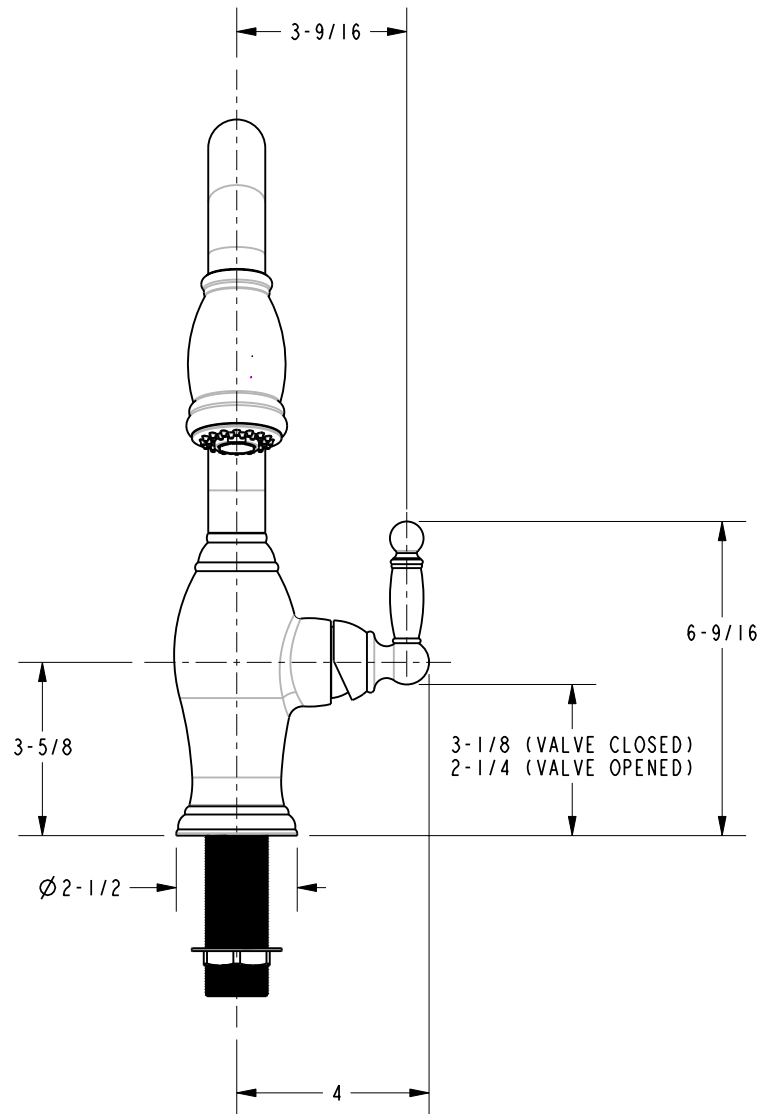
SCALE .150

REF. -

SHEET 1 OF 2

|     |          |          |
|-----|----------|----------|
| B   | EO-0734  | 06/22/06 |
| A   | EO-0603  | 01/10/06 |
| -   | EO-0520  | 08/15/05 |
| REV | REV DESC | DATE     |

# SPECIFICATION DWG



DIMENSIONS ARE IN INCHES AND AN APPROXIMATION OF A TYPICAL INSTALLATION

COPYRIGHT 2005 BRASSTECH, INC. THESE DRAWINGS AND THE DESIGNS DEPICTED HEREIN ARE THE PROPRIETARY PROPERTY OF BRASSTECH. ANY USE OR REPRODUCTION IS SUBJECT TO THE EXPRESS APPROVAL OF BRASSTECH. UNAUTHORIZED USE IS STRICTLY PROHIBITED. ALL RIGHTS RESERVED.

|                  |        |  |      |
|------------------|--------|--|------|
| <b>BRASSTECH</b> |        | 2001 E. CARNEGIE AVE.<br>SANTA ANA, CA 92705<br>(949) 417-5207 |      |
| INCORPORATED     |        |  |      |
| DWG NO.          | 94P    | REV  | B    |
| SCALE .250       | REF. - | SHEET 2  | OF 2 |