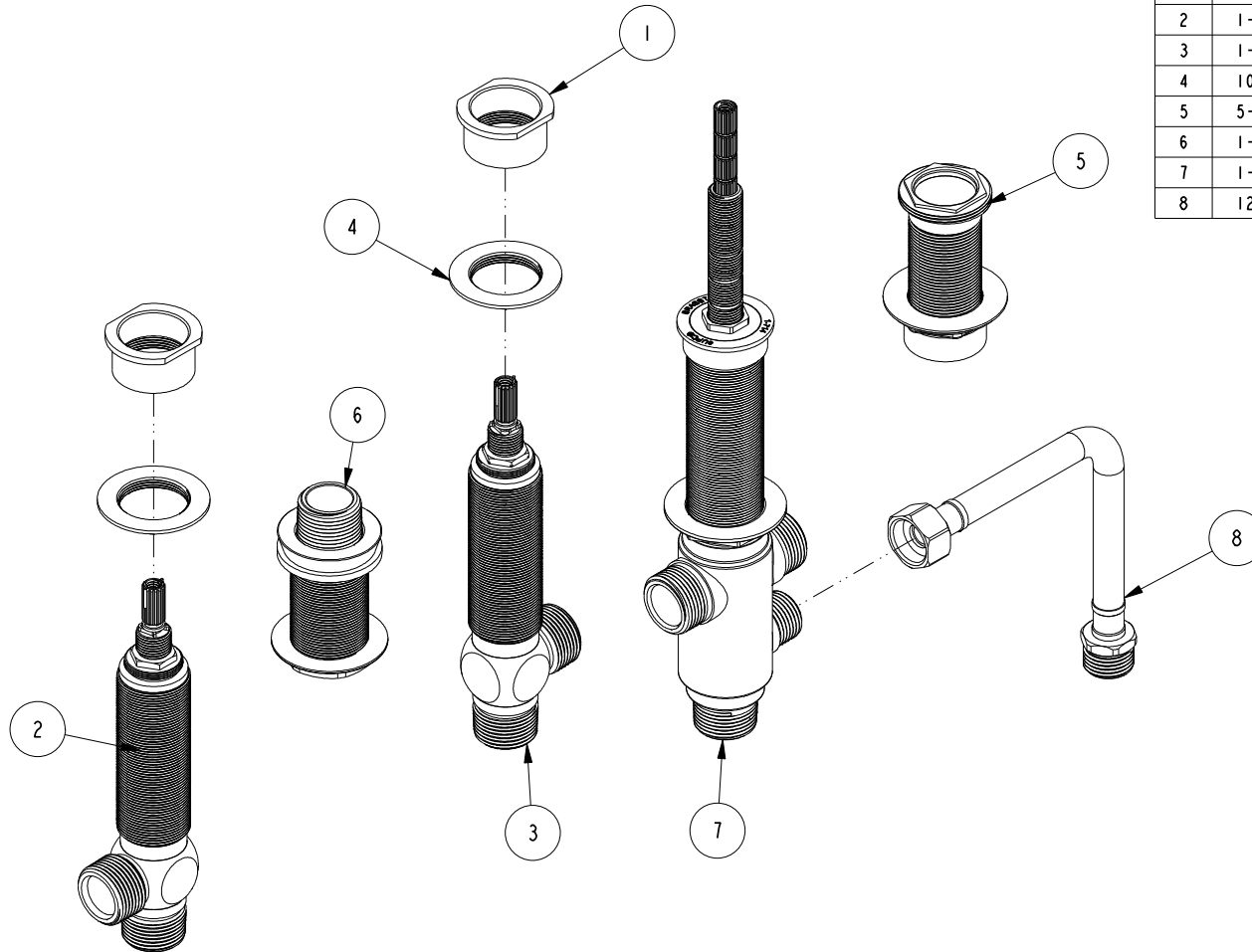


NOTES:

1. TO INSPECT ASSEMBLY, FOLLOW FIRST ARTICLE AND IN PROCESS INSPECTION SHEET.

BILL OF MATERIAL (CURRENT LEVEL)

| ITEM | PT/ASSY | DESCRIPTION | TYPE | QTY. |
|------|---------|-------------------------------|----------|------|
| 1 | 12280 | R/T-INVERT_FLANGE NUT | PART | 2 |
| 2 | 1-552 | R/T CART / VALVE ASSY - HOT | ASSEMBLY | 1 |
| 3 | 1-553 | R/T CARTR / VALVE ASSY - COLD | ASSEMBLY | 1 |
| 4 | 10529 | MOUNTING NUT | PART | 2 |
| 5 | 5-057 | MOUNTING HDW FOR DECK FLANGE | ASSEMBLY | 1 |
| 6 | 1-016 | ROMAN TUB QUICK DISCONNECT | ASSEMBLY | 1 |
| 7 | 1-714 | R/T VALVE DIVERTER | ASSEMBLY | 1 |
| 8 | 12302 | HOSE, 36 INCHES | ASSEMBLY | 1 |



| - | F | EN-4300kk | 03/23/21 | R.S. |
|------|-----|-------------|----------|----------|
| - | E | EN-4162 | 05/04/20 | J.M. |
| - | D | EN-3222E | 11/23/17 | J.A. |
| - | C | EN-2541-1 | 09/05/14 | - |
| - | B | EN-2036 | 01/17/12 | - |
| - | A | EN-1755 | 05/27/11 | - |
| - | - | EN-1265 | 10/30/09 | - |
| ZONE | REV | DESCRIPTION | DATE | APPROVED |

COPYRIGHT 2005 BRASSTECH, INC. THESE DRAWINGS AND THE DESIGNS DEPICTED HEREIN ARE THE PROPRIETARY PROPERTY OF BRASSTECH. ANY USE OR REPRODUCTION IS SUBJECT TO THE EXPRESS APPROVAL OF BRASSTECH. UNAUTHORIZED USE IS STRICTLY PROHIBITED. ALL RIGHTS RESERVED.

| | | | |
|-------------------|----------------------------------|-------------|---------|
| TESTING | - | - | - |
| ASSEMBLY | - | - | - |
| PLATING | - | - | - |
| POLISHING | - | NEXT ASSY | USED ON |
| MACHINING | - | APPLICATION | |
| TOOLING FIXTURE # | REMOVE ALL BURRS AND SHARP EDGES | | |

UNITS ARE: INCHES [MM]
TOLERANCES ARE:
FRACTIONS DECIMALS ANGLES
±1/16" .X ±.1 [2.5] ±1°
.XX ±.06 [1.5]

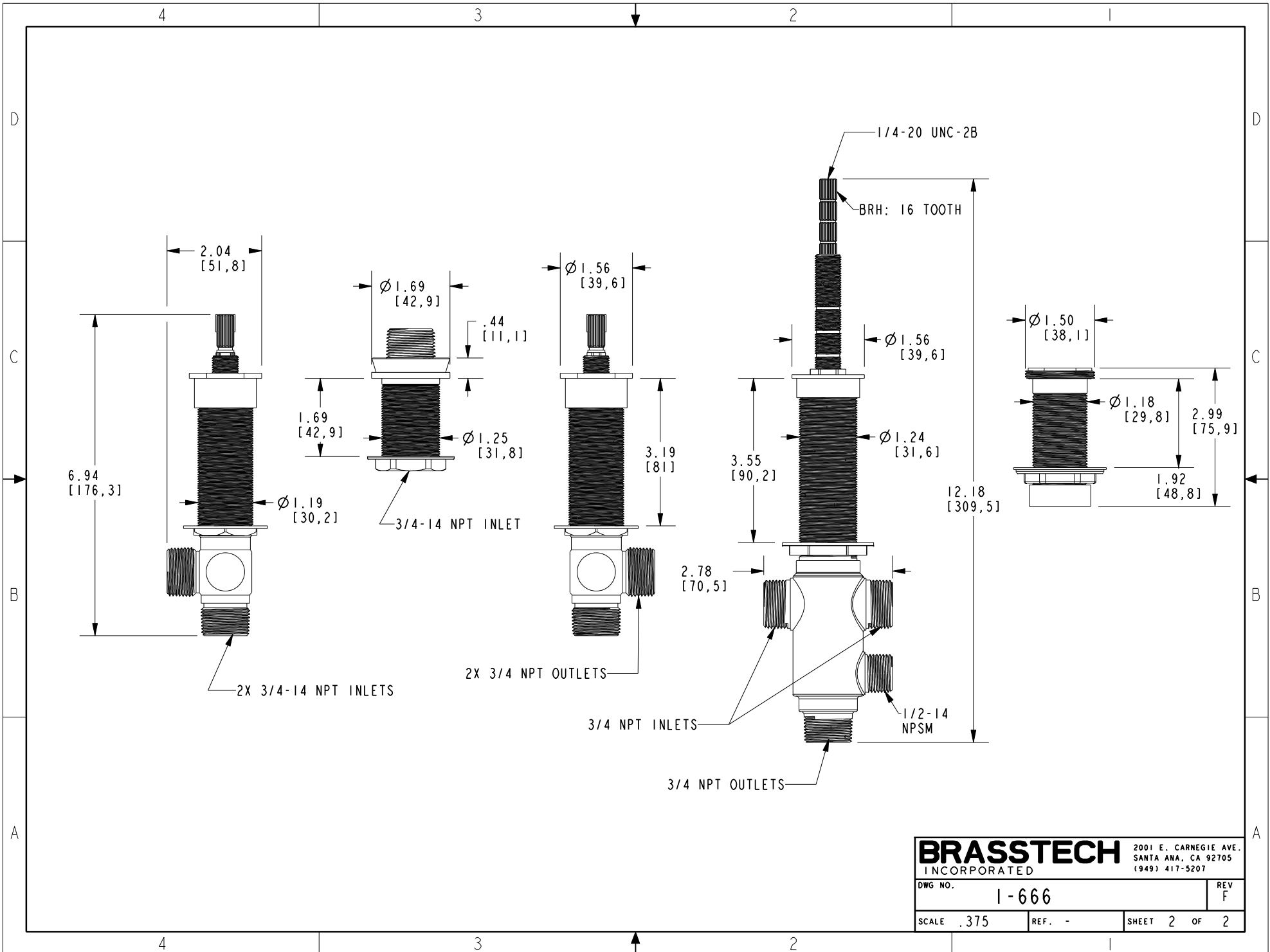
(X.XXX) DENOTES CRITICAL DIMS.
ALL THREADS ARE CRITICAL

| | | |
|----------|--------|----------|
| DRAWN | JIMSON | 11/23/17 |
| CHECKED | J.A. | 11/23/17 |
| APPROVED | J.A. | 11/23/17 |

BRASSTECH 2001 CARNEGIE AVE.
INCORPORATED SANTA ANA, CA 92705
(949) 417-5207

R/T 3 VALVE ASSY ROUGH

| | | | |
|---------|-------|------|---|
| DWG NO. | 1-666 | REV | F |
| SCALE | .325 | REF. | - |
| SHEET | 1 | OF | 2 |



| | | | |
|------------------|-------|--|---|
| BRASSTECH | | 2001 E. CARNEGIE AVE. SANTA ANA, CA 92705 (949) 417-5207 | |
| DWG NO. | 1-666 | REV | F |
| SCALE | .375 | REF. | - |
| SHEET 2 | | OF 2 | |