

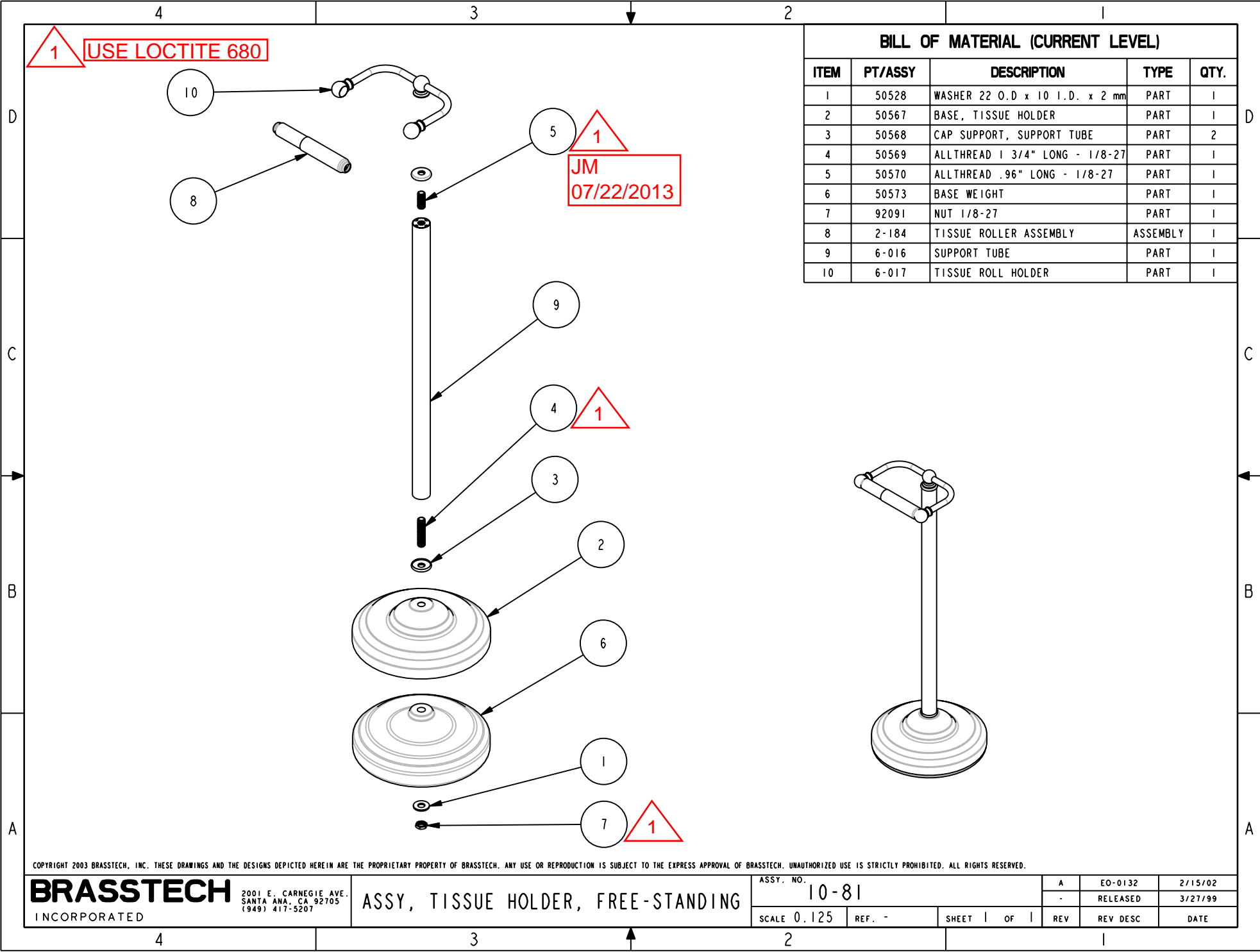
1 USE LOCTITE 680

1
JM
07/22/2013

1

1

BILL OF MATERIAL (CURRENT LEVEL)				
ITEM	PT/ASSY	DESCRIPTION	TYPE	QTY.
1	50528	WASHER 22 O.D x 10 I.D. x 2 mm	PART	1
2	50567	BASE, TISSUE HOLDER	PART	1
3	50568	CAP SUPPORT, SUPPORT TUBE	PART	2
4	50569	ALLTHREAD 1 3/4" LONG - 1/8-27	PART	1
5	50570	ALLTHREAD .96" LONG - 1/8-27	PART	1
6	50573	BASE WEIGHT	PART	1
7	92091	NUT 1/8-27	PART	1
8	2-184	TISSUE ROLLER ASSEMBLY	ASSEMBLY	1
9	6-016	SUPPORT TUBE	PART	1
10	6-017	TISSUE ROLL HOLDER	PART	1



COPYRIGHT 2003 BRASSTECH, INC. THESE DRAWINGS AND THE DESIGNS DEPICTED HEREIN ARE THE PROPRIETARY PROPERTY OF BRASSTECH. ANY USE OR REPRODUCTION IS SUBJECT TO THE EXPRESS APPROVAL OF BRASSTECH. UNAUTHORIZED USE IS STRICTLY PROHIBITED. ALL RIGHTS RESERVED.

BRASSTECH
INCORPORATED
2001 E. CARNEGIE AVE.
SANTA ANA, CA 92705
(949) 417-5207

ASSY, TISSUE HOLDER, FREE-STANDING

ASSY. NO.	10-81	A	EO-0132	2/15/02
SCALE	0.125	REF.	-	RELEASED
SHEET	1	OF	1	3/27/99
REV		REV DESC		DATE