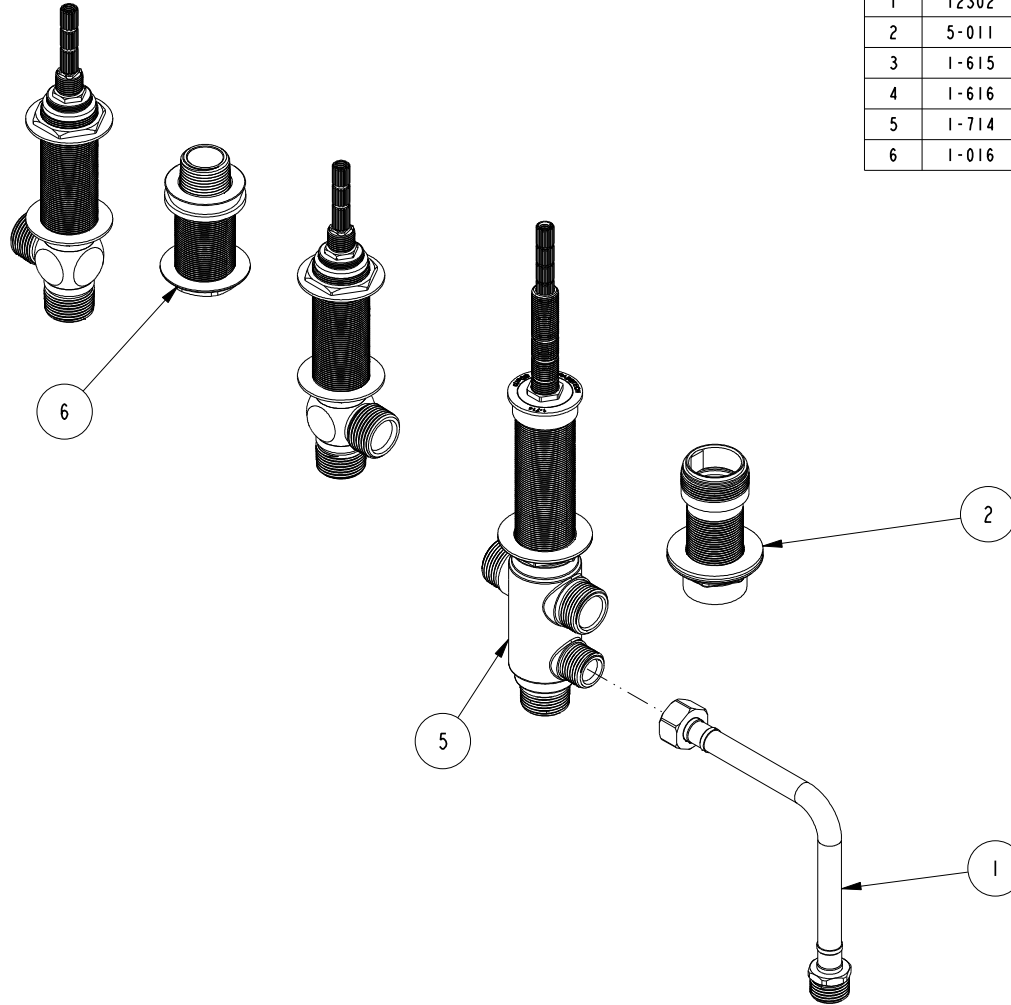


NOTES:

1. TO INSPECT ASSEMBLY, FOLLOW FIRST ARTICLE AND IN PROCESS INSPECTION SHEET.

BILL OF MATERIAL (CURRENT LEVEL)

ITEM	PT/ASSY	DESCRIPTION	TYPE	QTY.
1	12302	HOSE, 36 INCHES	ASSEMBLY	1
2	5-011	MOUNTING HDW FOR DECK FLANGE	ASSEMBLY	1
3	1-615	R/T LONG STEM VALVE ASSM (COLD)	ASSEMBLY	1
4	1-616	R/T LONG STEM VALVE ASSM (HOT)	ASSEMBLY	1
5	1-714	R/T VALVE DIVERTER	ASSEMBLY	1
6	1-016	ROMAN TUB QUICK DISCONNECT	ASSEMBLY	1



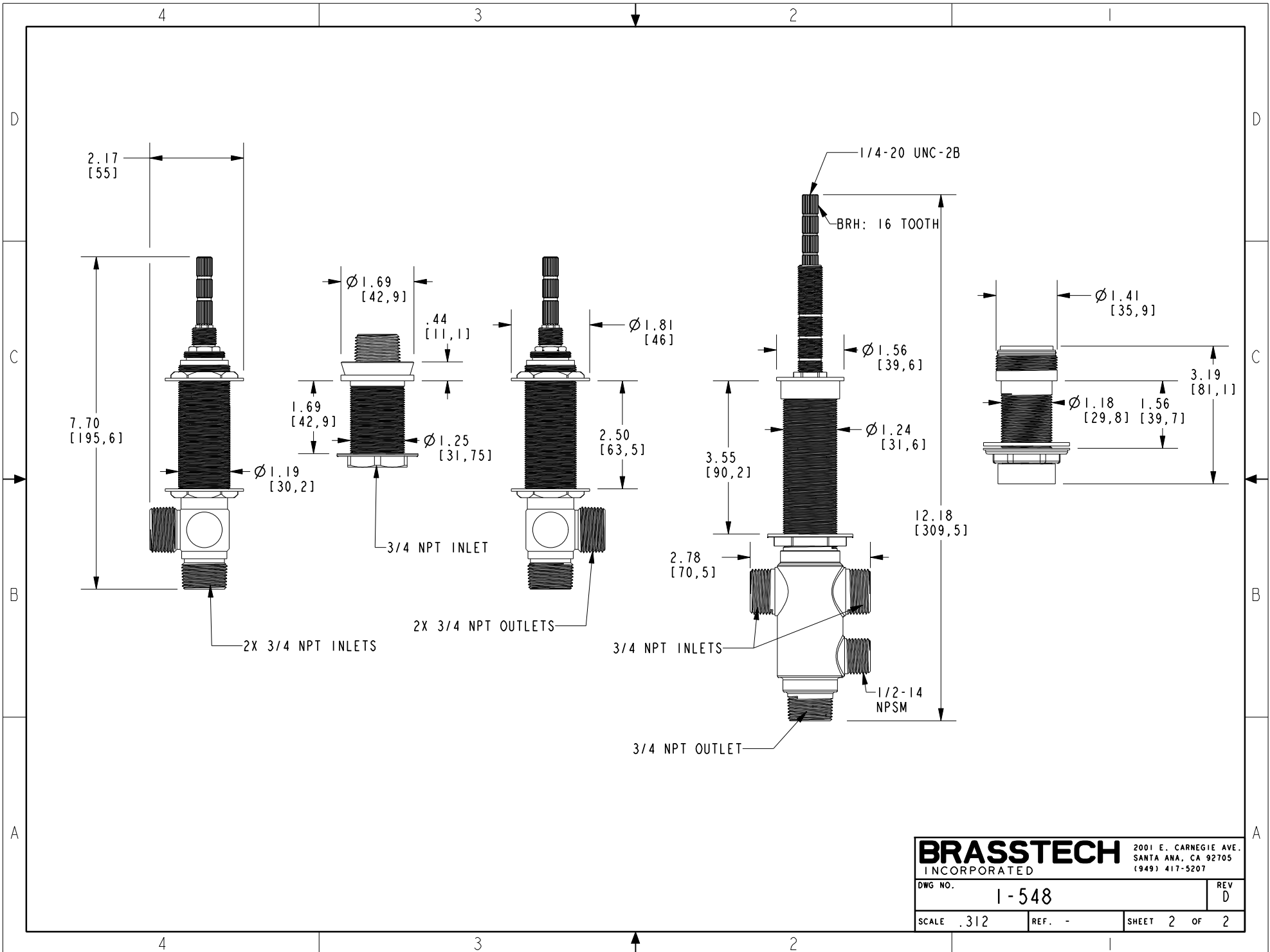
-	D	EN-4300kk	03/23/21	R. S.
-	C	EN-4166	05/04/20	J. M.
-	B	EN-3222E	11/23/17	J. A.
-	A	EO-0775	01/04/06	-
-	-	EO-0256	02/17/04	-
ZONE	REV	DESCRIPTION	DATE	APPROVED

COPYRIGHT 2005 BRASSTECH, INC. THESE DRAWINGS AND THE DESIGNS DEPICTED HEREIN ARE THE PROPRIETARY PROPERTY OF BRASSTECH. ANY USE OR REPRODUCTION IS SUBJECT TO THE EXPRESS APPROVAL OF BRASSTECH. UNAUTHORIZED USE IS STRICTLY PROHIBITED. ALL RIGHTS RESERVED.

TESTING	-	-	-
ASSEMBLY	-	-	-
PLATING	-	-	-
POLISHING	-	NEXT ASSY	USED ON
MACHINING	-	APPLICATION	
TOOLING FIXTURE #	REMOVE ALL BURRS AND SHARP EDGES		

UNITS ARE: INCHES [MM]		
TOLERANCES ARE:		
FRACTIONS	DECIMALS	ANGLES
±1/16"	.X ±.1 [2.5]	±1°
	.XX ±.06 [1.5]	
(X.XXX) DENOTES CRITICAL DIMS. ALL THREADS ARE CRITICAL		
DRAWN	JINSON	11/23/17
CHECKED	J.A.	11/23/17
APPROVED	J.A.	11/23/17

BRASSTECH		2001 CARNEGIE AVE. SANTA ANA, CA 92705 (949) 417-5207	
INCORPORATED			
ROMAN TUB 3-VALVE ROUGH			
DWG NO.		REV	
1-548		D	
SCALE	REF.	SHEET	OF
.250	-	1	2



BRASSTECH		2001 E. CARNEGIE AVE. SANTA ANA, CA 92705 (949) 417-5207	
DWG NO.	1-548	REV	D
SCALE	.312	REF.	-
SHEET 2		OF 2	