

COPYRIGHT 2005 BRASSTECH, INC. THESE DRAWINGS AND THE DESIGNS DEPICTED HEREIN ARE THE PROPRIETARY PROPERTY OF BRASSTECH. ANY USE OR REPRODUCTION IS SUBJECT TO THE EXPRESS APPROVAL OF BRASSTECH. UNAUTHORIZED USE IS STRICTLY PROHIBITED. ALL RIGHTS RESERVED.

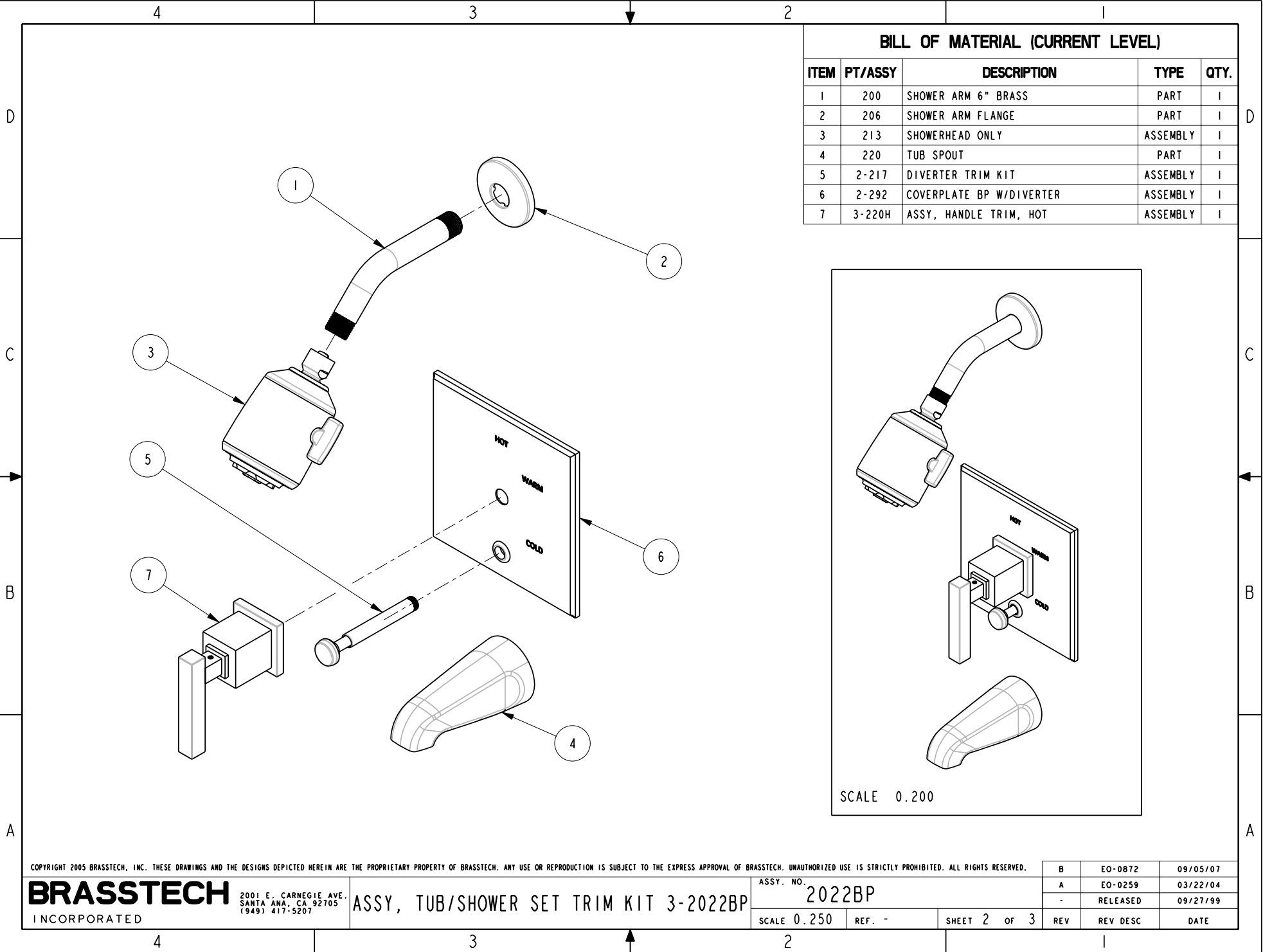
**BRASSTECH**  
INCORPORATED

TOP ASSY, TUB/SHOWER SET

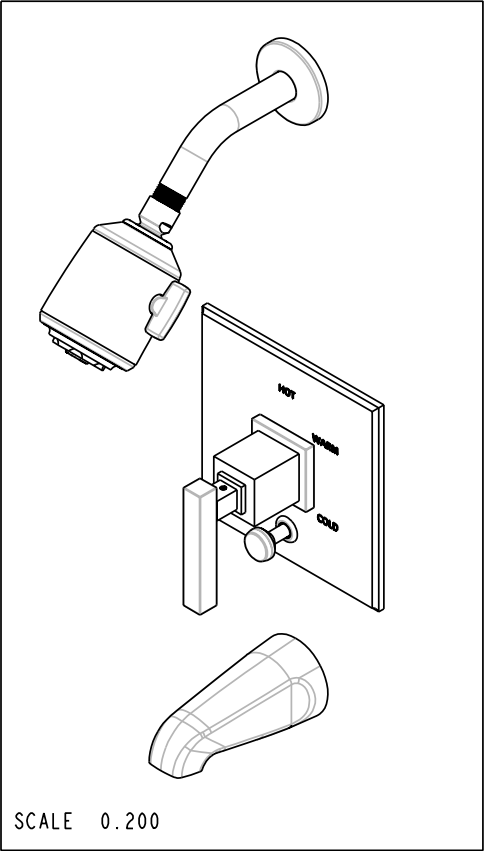
ASSY. NO. 2022BP

SCALE 0.250 REF. - SHEET 1 OF 3

B	EO-0872	09/05/07
A	EO-0259	03/22/04
-	RELEASED	09/27/99
REV	REV DESC	DATE

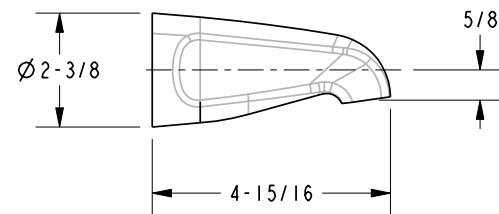
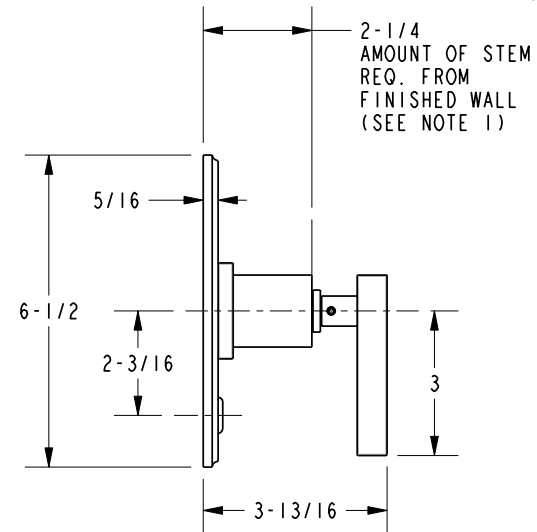
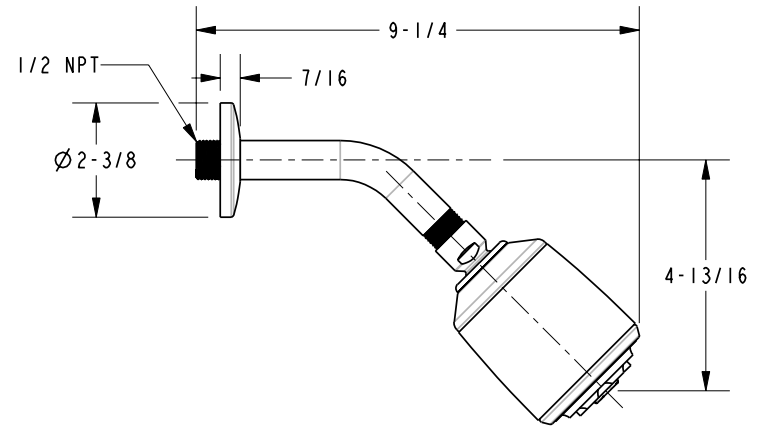
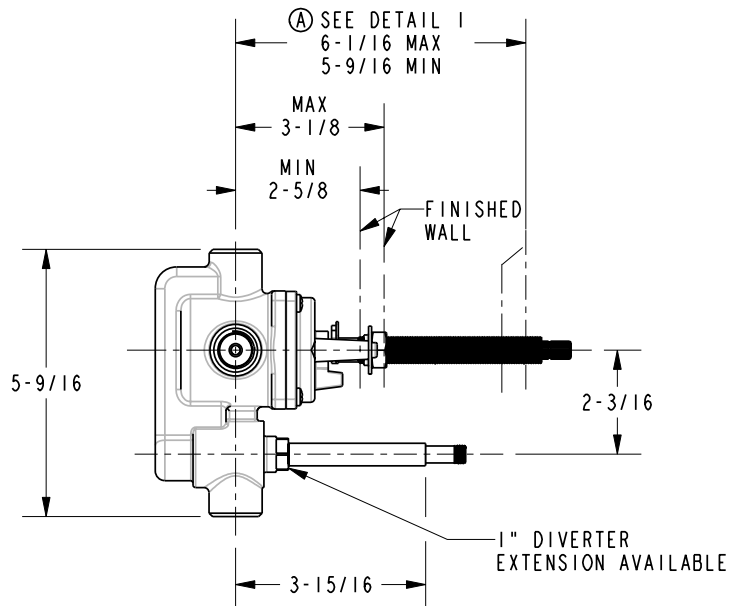
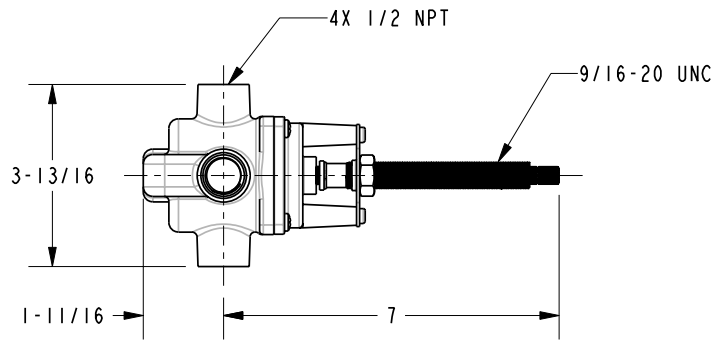


BILL OF MATERIAL (CURRENT LEVEL)				
ITEM	PT/ASSY	DESCRIPTION	TYPE	QTY.
1	200	SHOWER ARM 6" BRASS	PART	1
2	206	SHOWER ARM FLANGE	PART	1
3	213	SHOWERHEAD ONLY	ASSEMBLY	1
4	220	TUB SPOUT	PART	1
5	2-217	DIVERTER TRIM KIT	ASSEMBLY	1
6	2-292	COVERPLATE BP W/DIVERTER	ASSEMBLY	1
7	3-220H	ASSY, HANDLE TRIM, HOT	ASSEMBLY	1



**SPECIFICATION DWG**

1. CUT STEM TO DIMENSION "A".  
CUT ALL-THREAD 1/2" SHORTER THAN STEM.



DIMENSIONS ARE IN INCHES AND AN APPROXIMATION OF A TYPICAL INSTALLATION

COPYRIGHT 2005 BRASSTECH, INC. THESE DRAWINGS AND THE DESIGNS DEPICTED HEREIN ARE THE PROPRIETARY PROPERTY OF BRASSTECH. ANY USE OR REPRODUCTION IS SUBJECT TO THE EXPRESS APPROVAL OF BRASSTECH. UNAUTHORIZED USE IS STRICTLY PROHIBITED. ALL RIGHTS RESERVED.

**BRASSTECH**  
INCORPORATED

2001 E. CARNEGIE AVE.  
SANTA ANA, CA 92705  
(949) 417-5207

DWG NO.

2022BP

REV  
B

SCALE 0.250

REF.	-
------	---

SHEET 3 OF 3