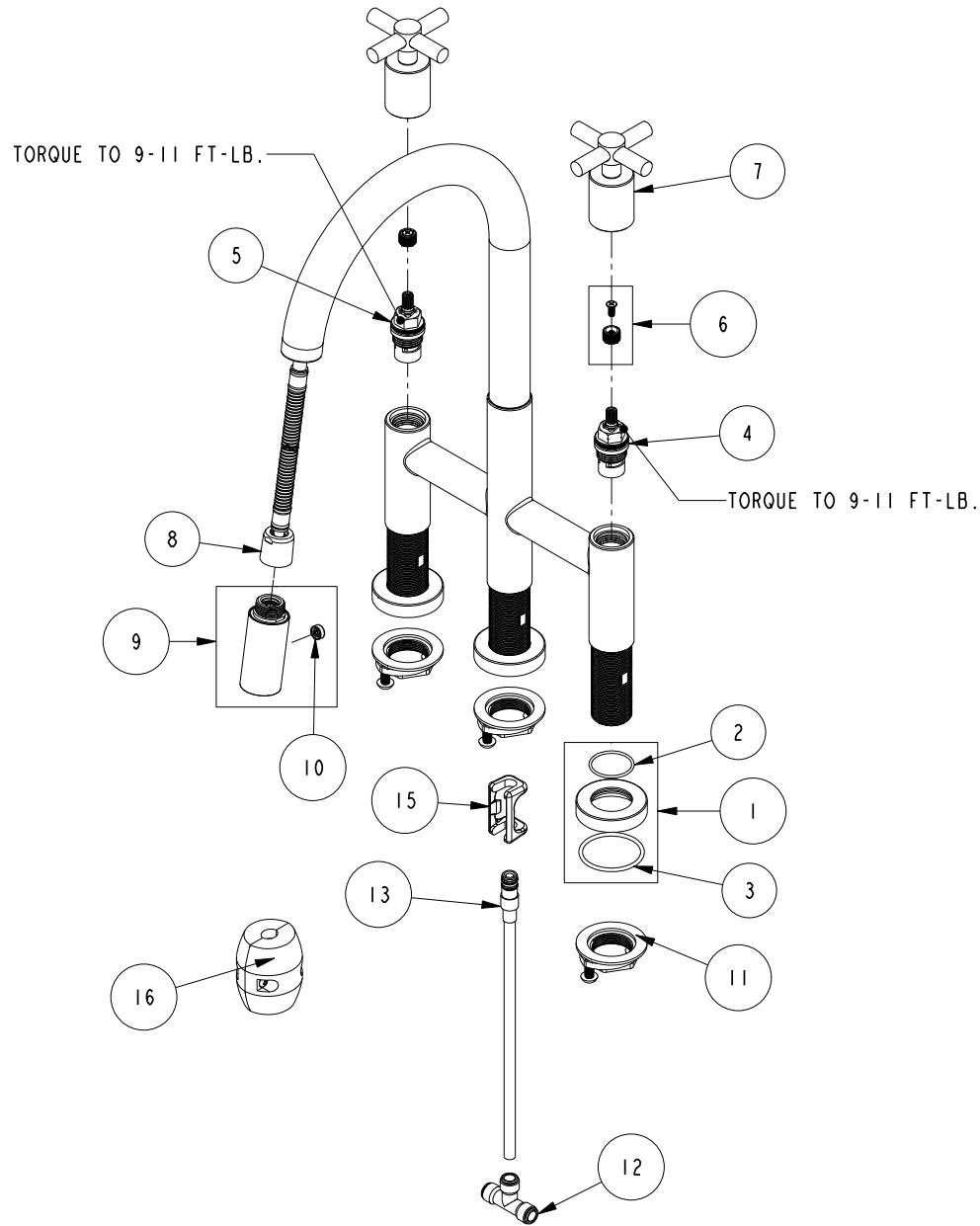


# REPLACEMENT PARTS



ITEM	PT/ASSY	SPECIFY FINISH	DESCRIPTION
1	20-368	YES	ESCUTCHEON ASM
2	91144		O-RING, #2-024, EPDM, 65-75 DURO
3	91362		O-RING, #2-130, EPDM, 65-75 DURO
4	1-005		C/S VALVE CARTRIDGE - COLD
5	1-006		C/S VALVE CARTRIDGE - HOT
6	10-305		CARTRIDGE STEM ADAPTER KIT
7	20-354	YES	CROSS HANDLE ASM
8	11877		HOSE, PULLDOWN SWIVEL
9	3-480	YES	SPRAY HEAD, EAST LINEAR
10	91667		BUTTON
11	1-393		1-1/8 18 UNEF MOUNTING KIT
12	92934		5/16" TUBE TEE CONNECTOR
13	1-474		PEX PULLDOWN CONNECTOR
14	98044		LABEL - HOT
15	91568		RETAINER CLIP
16	1-286		WEIGHT ASM

**BRIDGE PULLDOWN**  
**1500-5462**

REV B EN-4749 12/08/23 APPROVED RS

**NEWPORT BRASS.**

t: 949.417.5207 | www.newportbrass.com