

BILL OF MATERIAL (CURRENT LEVEL)				
ITEM	PT/ASSY	DESCRIPTION	TYPE	QTY.
1	200	SHOWER ARM 6" BRASS	PART	1
2	206	SHOWER ARM FLANGE	PART	1
3	2131	BELL SHOWERHEAD	ASSEMBLY	1
4	2-144	WALL TUB SPOUT - HEX	ASSEMBLY	1
5	2-217	DIVERTER TRIM KIT	ASSEMBLY	1
6	2-224	COVERPLATE BP W/DIVERTER	ASSEMBLY	1
7	3-241	TRIM KIT - HANDLE ESCUTCHEON	ASSEMBLY	1

COPYRIGHT 2005 BRASSTECH, INC. THESE DRAWINGS AND THE DESIGNS DEPICTED HEREIN ARE THE PROPRIETARY PROPERTY OF BRASSTECH. ANY USE OR REPRODUCTION IS SUBJECT TO THE EXPRESS APPROVAL OF BRASSTECH. UNAUTHORIZED USE IS STRICTLY PROHIBITED. ALL RIGHTS RESERVED.

BRASSTECH
INCORPORATED
2001 E. CARNEGIE AVE.
SANTA ANA, CA 92705
(949) 417-5207

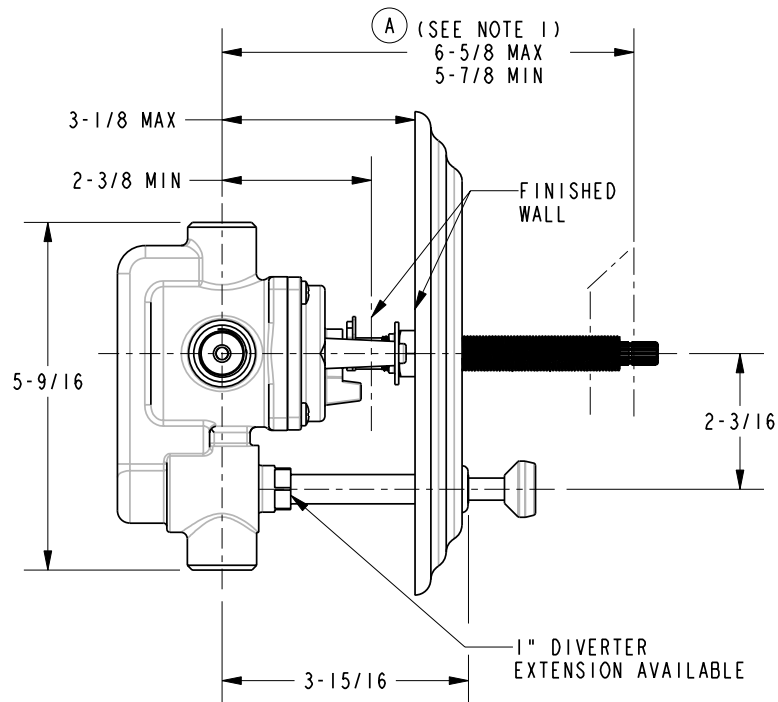
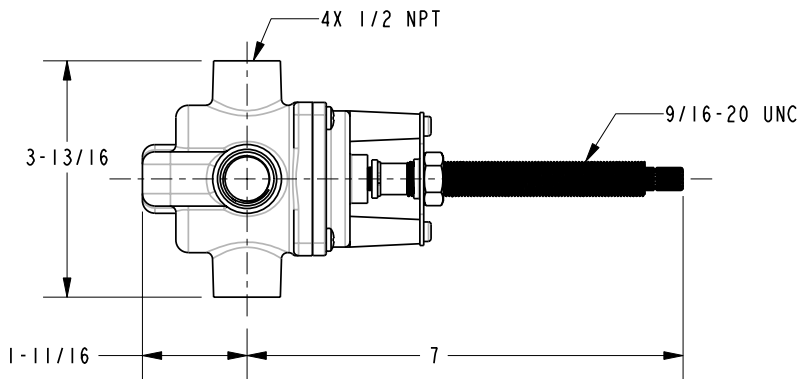
TRIM-BP TUB / SHOWER SET 3-1032BP

ASSY. NO.		B	Eo-0872	09/05/07
1032BP		A	EO-0224	07/01/03
SCALE .200		-	EO-0169	03/03
REF. -	SHEET 2 OF 3	REV	REV DESC	DATE

SPECIFICATION DWG

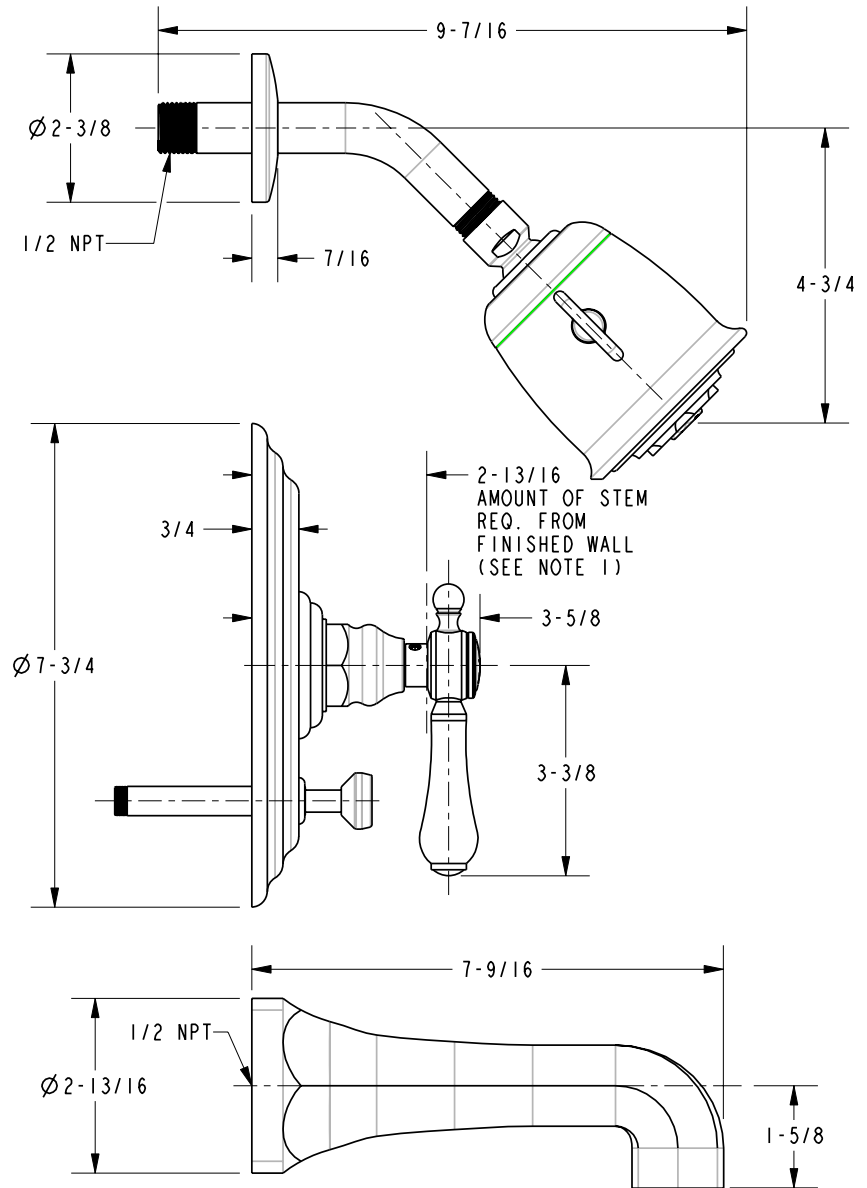
NOTES:

1. CUT STEM TO DIMENSION "A"
CUT ALL-THREAD 1/2" SHORTER THAN STEM.



DIMENSIONS ARE IN INCHES AND AN APPROXIMATION OF A TYPICAL INSTALLATION

COPYRIGHT 2005 BRASSTECH, INC. THESE DRAWINGS AND THE DESIGNS DEPICTED HEREIN ARE THE PROPRIETARY PROPERTY OF BRASSTECH. ANY USE OR REPRODUCTION IS SUBJECT TO THE EXPRESS APPROVAL OF BRASSTECH. UNAUTHORIZED USE IS STRICTLY PROHIBITED. ALL RIGHTS RESERVED.

**BRASSTECH**
INCORPORATED

2001 E. CARNEGIE AVE.
SANTA ANA, CA 92705
(949) 417-5207

DWG NO.

1032BP

REV
B

SCALE .325

REF.	-
------	---

SHEET 3 OF 3