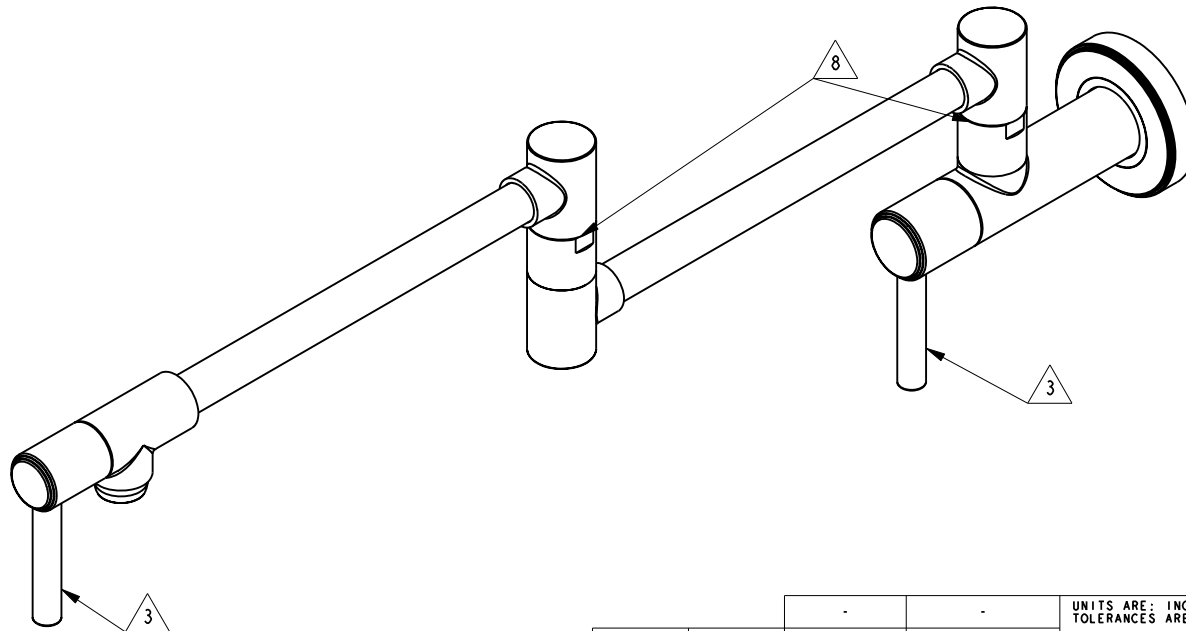


NOTES:

- (N1) 1. FIT / FORM / FUNCTION SHALL FOLLOW PS-E.008.
- 2. PACK THESE ITEMS IN A PLASTIC BAG.
- 3. HANDLE IN CLOSE POSITION.
- 4. INSTALLATION TORQUE 11-14 LB-FT.
- 5. INSTALLATION TORQUE 4-6 LB-FT.
- 6. APPLY LOCTITE 680.
- 7. APPLY LOCTITE 242
- 8. SWIVEL CONNECTION SHALL NOT HAVE NOTICEABLE WOBBLINESS AFTER ASSEMBLY.

BILL OF MATERIAL (CURRENT LEVEL)

ITEM	PT/ASSY	DESCRIPTION	TYPE	QTY.
1	11330	VALVE BODY, WALL-END	PART	1
2	11309	FLANGE, MOUNTING	PART	1
3	92231	SCRW, 1/4-20 X 1/4 SKT HD CUP PT SS	PART	1
4	92223	SCRW, #8 X 2-1/2 PHL FLT HD SS	PART	4
5	2-553	LOWER ARM ASM, CONTEMP	ASSEMBLY	1
6	2-552	UPPER ARM ASM, CONTEMP	ASSEMBLY	1
7	1-437	CARTR 3/8 HOT 1/4 TR	PART	1
8	20-253	FLANGE ASM, CONTEMP	ASSEMBLY	1
9	1-326	W/S CARTRIDGE FRICTION - HOT	PART	1
10	12700	HUB, HANDLE, WALL-END	PART	1
11	92005	SCRW, 1/4-20 X 5/8 SKT HD CUP PT SS	PART	2
12	12701	HUB, HANDLE, TIP-END	PART	1
13	12750	ADAPTER	PART	2
14	11017	LEVER HANDLE	PART	2
15	92477	SCRW, M4 X 16 SKT FLT HD SS	PART	2



UNITS ARE: INCHES [MM]
 TOLERANCES ARE:
 FRACTIONS DECIMALS ANGLES
 $\pm 1/16"$.X $\pm .1$ [2,5] $\pm 1^\circ$
 .XX $\pm .06$ [1,5]
 (X.XXX) DENOTES CRITICAL DIMS.
 ALL THREADS ARE CRITICAL

BRASSTECH 2001 CARNEGIE AVE.
 INCORPORATED SANTA ANA, CA 92705
 (949) 417-5207

POT FILLER, CONTEMP

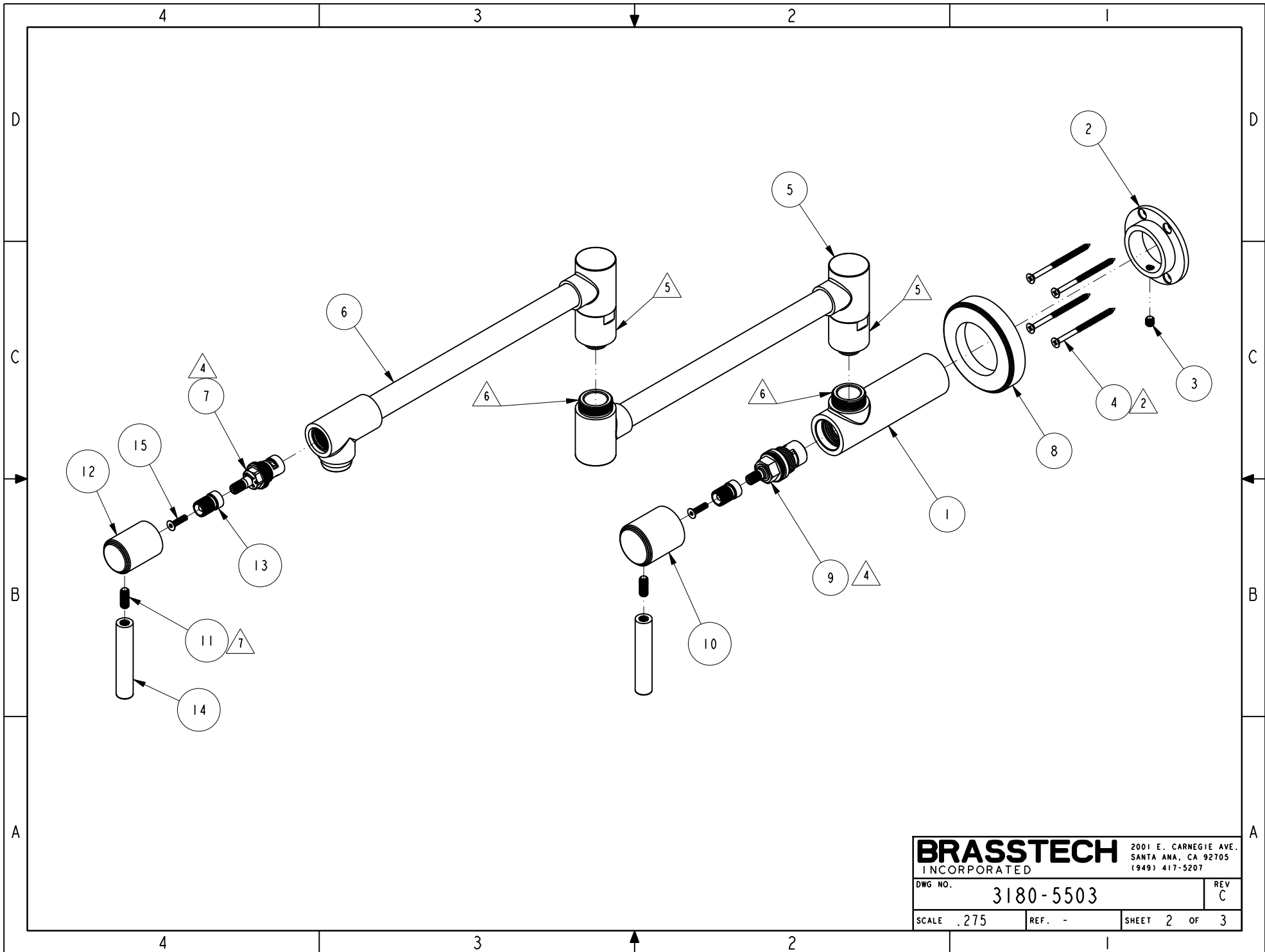
ZONE	REV	DESCRIPTION	DATE	APPROVED
-	C	EN-4112	03/24/20	J.M.
-	B	EN-3756	11/23/18	C.G.
-	A	EN-3693	08/28/18	J.M.
-	-	EN-3229	05/17/17	J.M.

COPYRIGHT 2005 BRASSTECH, INC.
 THESE DRAWINGS AND THE DESIGNS
 DEPICTED HEREIN ARE THE PROPRIETARY
 PROPERTY OF BRASSTECH. ANY USE
 OR REPRODUCTION IS SUBJECT TO
 THE EXPRESS APPROVAL OF BRASSTECH.
 UNAUTHORIZED USE IS STRICTLY
 PROHIBITED. ALL RIGHTS RESERVED.

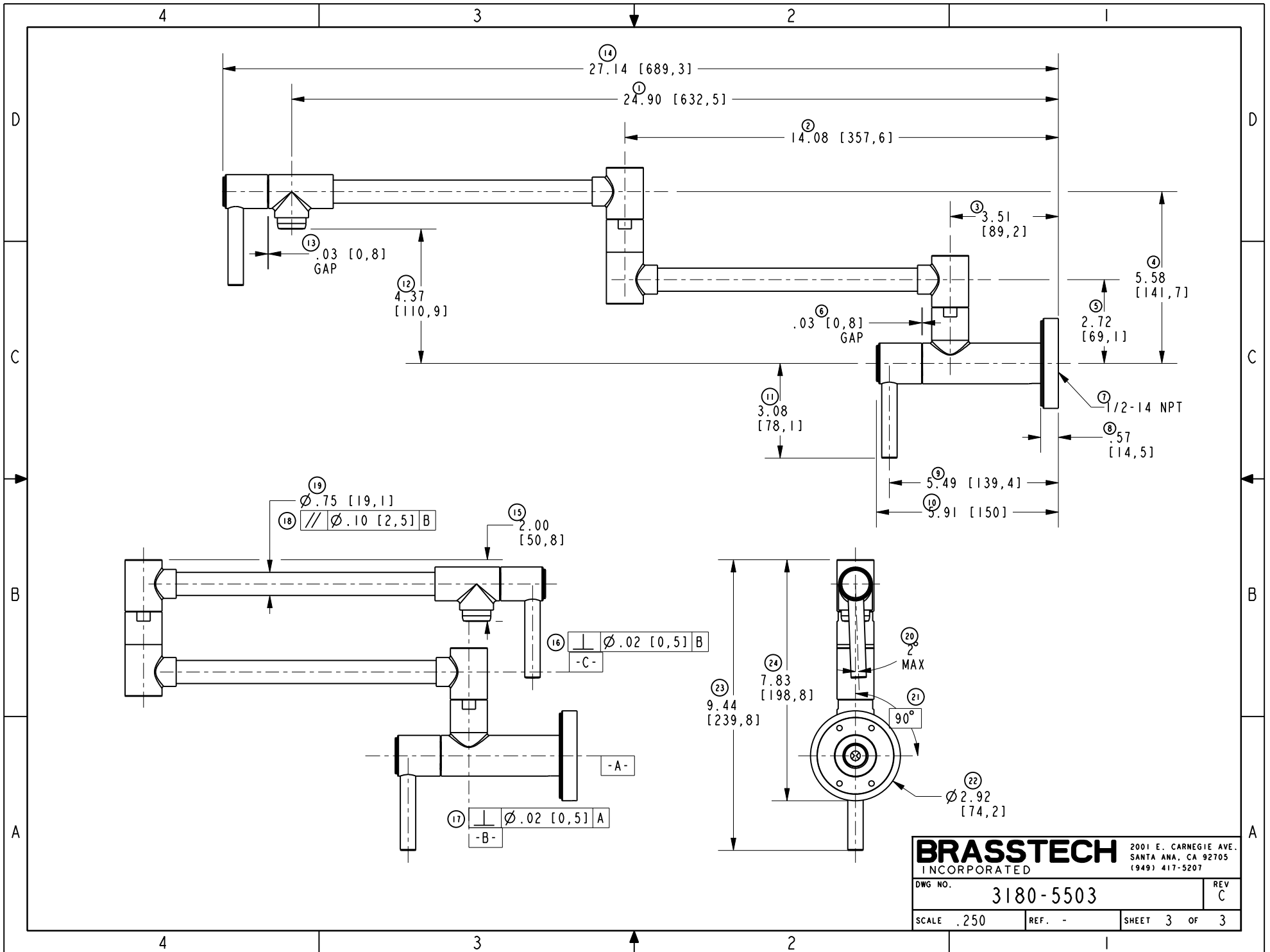
TESTING	ASSEMBLY	PLATING	POLISHING	MACHINING	TOOLING FIXTURE #	APPLICATION
-	-	-	-	-	-	REMOVE ALL BURRS AND SHARP EDGES
-	-	-	-	-	-	USED ON

DRAWN	CHECKED	APPROVED
JINSON	C.G.	C.G.
11/23/18	11/23/18	11/23/18

DWG NO.	3180-5503	REV	C
SCALE	.300	REF.	-
SHEET	1	OF	3



BRASSTECH INCORPORATED		2001 E. CARNEGIE AVE. SANTA ANA, CA 92705 (949) 417-5207	
DWG NO.	3180-5503	REV C	
SCALE .275	REF. -	SHEET 2 OF 3	



BRASSTECH		2001 E. CARNEGIE AVE. SANTA ANA, CA 92705 (949) 417-5207	
DWG NO.	3180-5503	REV	C
SCALE	.250	REF.	-
SHEET 3		OF 3	