

| BILL OF MATERIAL (CURRENT LEVEL) |         |                     |          |      |
|----------------------------------|---------|---------------------|----------|------|
| ITEM                             | PT/ASSY | DESCRIPTION         | TYPE     | QTY. |
| 1                                | 1-500   | T/S 2 - VALVE ROUGH | ASSEMBLY | 1    |
| 2                                | 3-805   | TRIM KIT (3-805)    | ASSEMBLY | 1    |

COPYRIGHT 2005 BRASSTECH, INC. THESE DRAWINGS AND THE DESIGNS DEPICTED HEREIN ARE THE PROPRIETARY PROPERTY OF BRASSTECH. ANY USE OR REPRODUCTION IS SUBJECT TO THE EXPRESS APPROVAL OF BRASSTECH. UNAUTHORIZED USE IS STRICTLY PROHIBITED. ALL RIGHTS RESERVED.

**BRASSTECH**  
INCORPORATED  
2001 E. CARNEGIE AVE.  
SANTA ANA, CA 92705  
(949) 417-5207

TUB SET

|              |       |      |          |
|--------------|-------|------|----------|
| ASSY. NO.    |       | 805  |          |
| SCALE        | 0.300 | REF. | -        |
| SHEET 1 OF 3 |       | REV  | REV DESC |
|              |       | DATE |          |

|     |          |          |
|-----|----------|----------|
| B   | EO-0787  | 11/14/06 |
| A   | NEW ESC. | 01/97    |
| -   | RELEASED | PRE '95  |
| REV | REV DESC | DATE     |

4

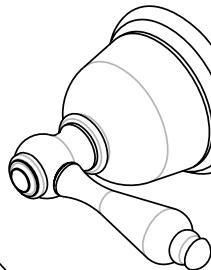
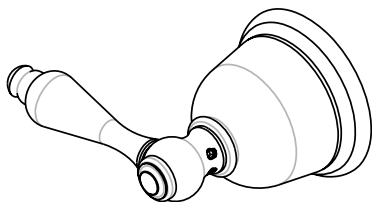
3

2

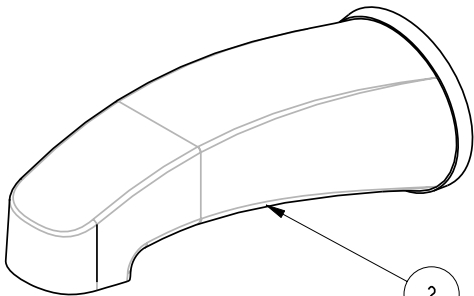
1

## BILL OF MATERIAL (CURRENT LEVEL)

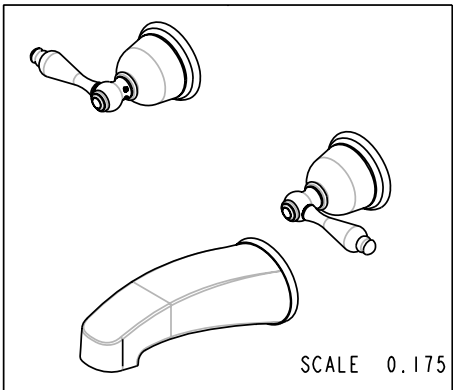
| ITEM | PT/ASSY | DESCRIPTION           | TYPE     | QTY. |
|------|---------|-----------------------|----------|------|
| 1    | 3-156   | TRIM KIT - STOP VALVE | ASSEMBLY | 2    |
| 2    | 2-564   | TUB SPOUT             | ASSEMBLY | 1    |



1



2



SCALE 0.175

COPYRIGHT 2005 BRASSTECH, INC. THESE DRAWINGS AND THE DESIGNS DEPICTED HEREIN ARE THE PROPRIETARY PROPERTY OF BRASSTECH. ANY USE OR REPRODUCTION IS SUBJECT TO THE EXPRESS APPROVAL OF BRASSTECH. UNAUTHORIZED USE IS STRICTLY PROHIBITED. ALL RIGHTS RESERVED.

**BRASSTECH**  
INCORPORATED2001 E. CARNEGIE AVE.  
SANTA ANA, CA 92705  
(949) 417-5207

TRIM KIT (3-805)

ASSY. NO.  
805

SCALE 0.375

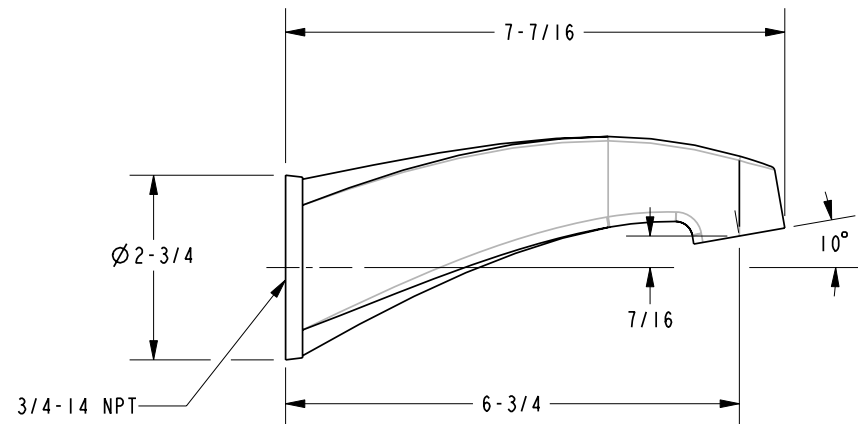
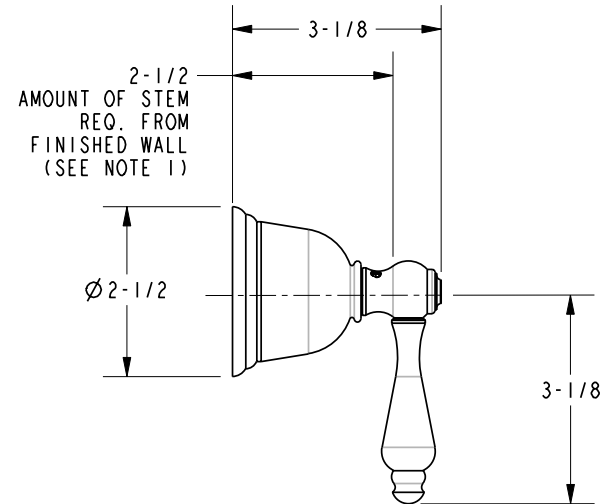
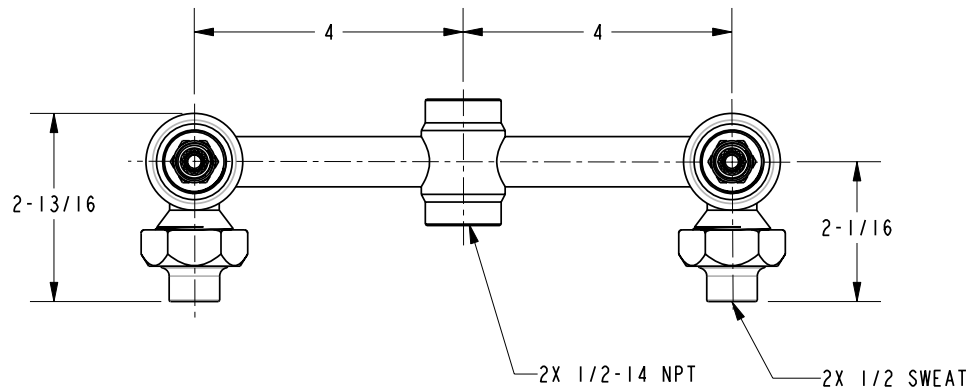
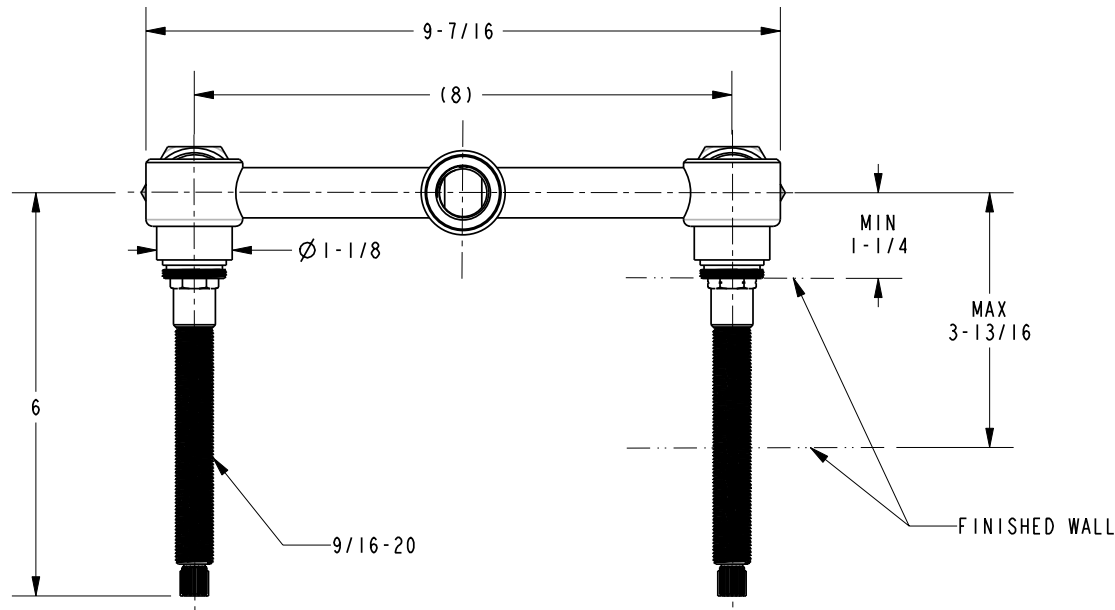
REF. -

SHEET 2 OF 3

|     |          |          |
|-----|----------|----------|
| B   | EO-0787  | 11/14/06 |
| A   | NEW ESC. | 01/97    |
| -   | RELEASED | PRE '95  |
| REV | REV DESC | DATE     |

NOTES:  
1. CUT ALL-THREAD 1/2" SHORTER THAN STEM.

# SPECIFICATION DWG



DIMENSIONS ARE IN INCHES AND AN APPROXIMATION OF A TYPICAL INSTALLATION

COPYRIGHT 2005 BRASSTECH, INC. THESE DRAWINGS AND THE DESIGNS DEPICTED HEREIN ARE THE PROPRIETARY PROPERTY OF BRASSTECH. ANY USE OR REPRODUCTION IS SUBJECT TO THE EXPRESS APPROVAL OF BRASSTECH. UNAUTHORIZED USE IS STRICTLY PROHIBITED. ALL RIGHTS RESERVED.

|                  |       |  |   |
|------------------|-------|--|---|
| <b>BRASSTECH</b> |       | 2001 E. CARNEGIE AVE.<br>SANTA ANA, CA 92705<br>(949) 417-5207 |   |
| INCORPORATED     |       |  |   |
| DWG NO.          | 805   | REV  | B |
| SCALE            | 0.350 | REF.   | - |
| SHEET            | 3     | OF   | 3 |