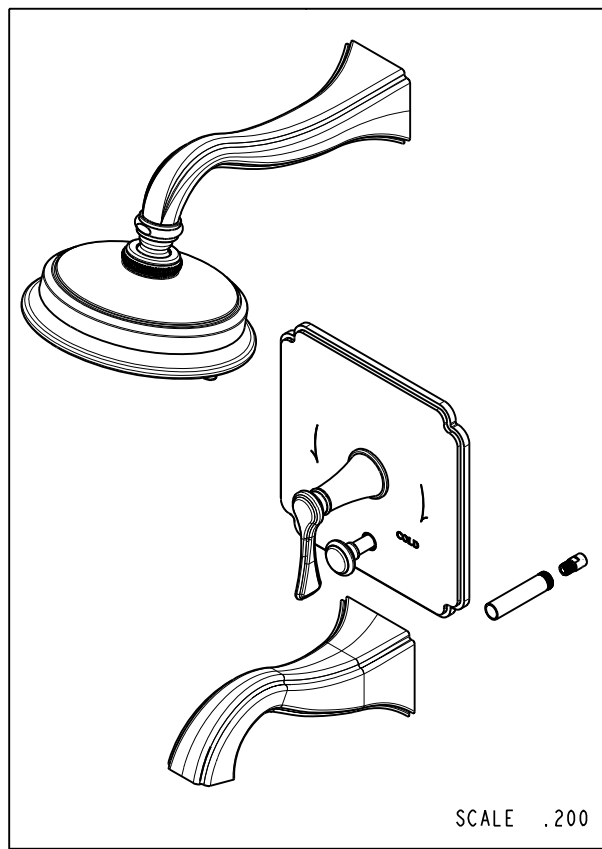


BILL OF MATERIAL (CURRENT LEVEL)				
ITEM	PT/ASSY	DESCRIPTION	TYPE	QTY.
1	8-007	DIVERTER TRIM ASM	ASSEMBLY	1
2	8-006	SHOWER PLATE ASM	ASSEMBLY	1
3	<del>2-806</del>	BP LEVER HANDLE/ ESC. ASM	ASSEMBLY	1
4	8-009	TUB WALL SPOUT ASM	ASSEMBLY	1
5	80020	SHOWER ARM	PART	1
6	1-255	TOOTH STEM & RING KIT FOR BP VALVE	ASSEMBLY	1
7	2144	TRAD. SHOWER HEAD - 5 JETS	ASSEMBLY	1
8	2-894	DIVERTER TRIM KIT (SHORT)	ASSEMBLY	1



SCALE .200

COPYRIGHT 2005 BRASSTECH, INC. THESE DRAWINGS AND THE DESIGNS DEPICTED HEREIN ARE THE PROPRIETARY PROPERTY OF BRASSTECH. ANY USE OR REPRODUCTION IS SUBJECT TO THE EXPRESS APPROVAL OF BRASSTECH. UNAUTHORIZED USE IS STRICTLY PROHIBITED. ALL RIGHTS RESERVED.

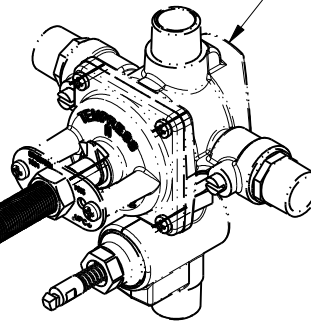
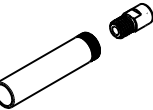
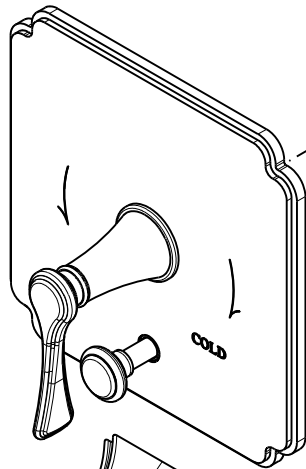
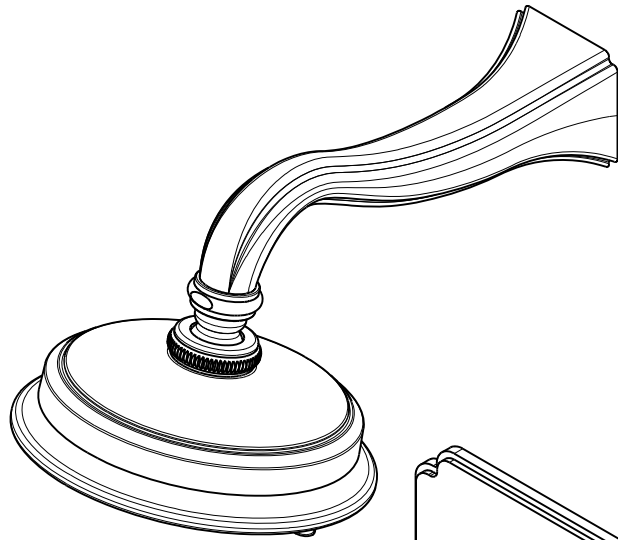
**BRASSTECH**  
INCORPORATED  
2001 E. CARNEGIE AVE.  
SANTA ANA, CA 92705  
(949) 417-5207

BALANCED PRESSURE TUB &  
SHOWER TRIM SET - LEVER HANDLE

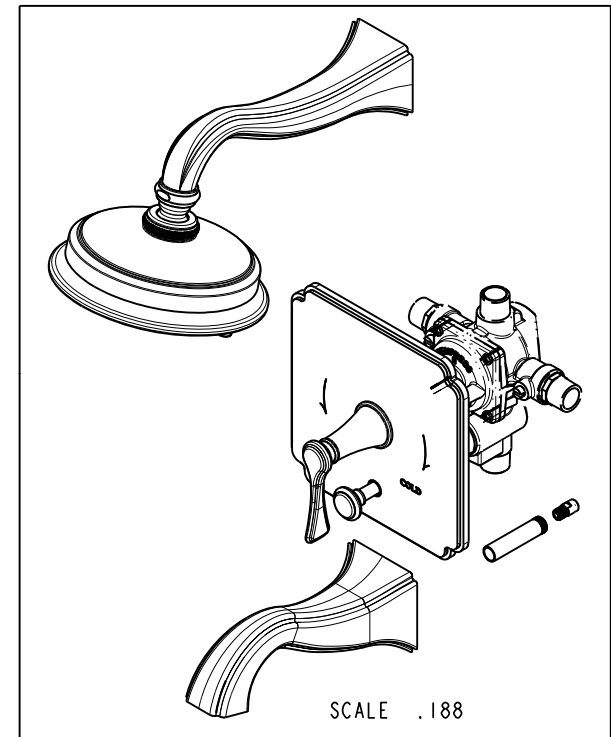
ASSY. NO. **3-2532BP**  
SCALE .313 REF. - SHEET 1 OF 3

D	EN-2452	02/07/13
C	EN-2068	02/09/12
B	EN-2027	01/12/12
A	EN-1805	06/29/11
-	EN-1735	06/10/11
REV	REV DESC	DATE

# SPECIFICATION DWG



PN: I-595  
SOLD SEPARATELY



SCALE .188

DIMENSIONS ARE IN INCHES AND AN APPROXIMATION OF A TYPICAL INSTALLATION

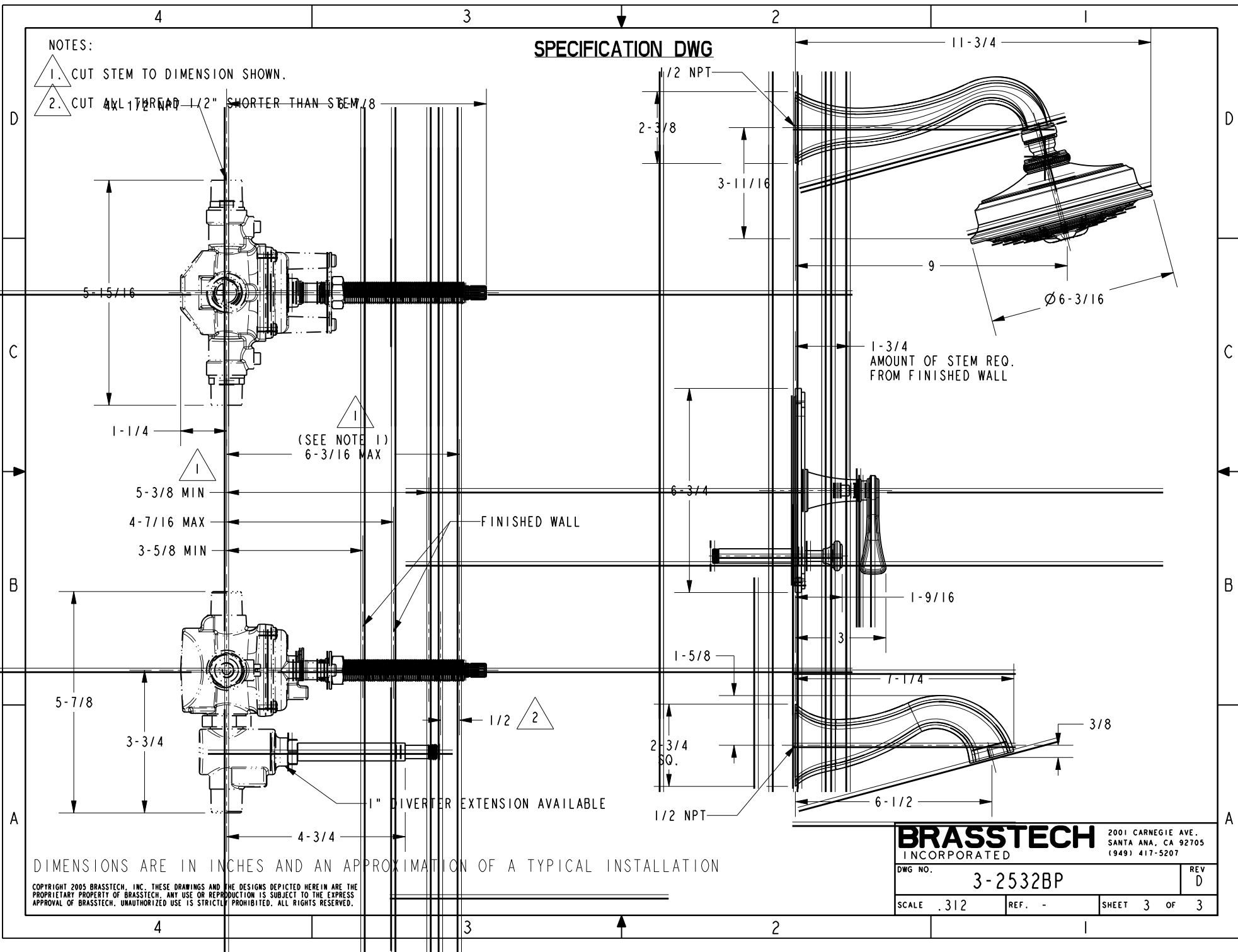
COPYRIGHT 2005 BRASSTECH, INC. THESE DRAWINGS AND THE DESIGNS DEPICTED HEREIN ARE THE PROPRIETARY PROPERTY OF BRASSTECH. ANY USE OR REPRODUCTION IS SUBJECT TO THE EXPRESS APPROVAL OF BRASSTECH. UNAUTHORIZED USE IS STRICTLY PROHIBITED. ALL RIGHTS RESERVED.

<b>BRASSTECH</b> INCORPORATED		2001 CARNEGIE AVE. SANTA ANA, CA 92705 (949) 417-5207
DWG NO.	3-2532BP	REV D
SCALE .313	REF. -	SHEET 2 OF 3

NOTES:

1. CUT STEM TO DIMENSION SHOWN.
2. CUT 4X1/2" NPT 1/2" SHORTER THAN STEM 7/8

SPECIFICATION DWG



DIMENSIONS ARE IN INCHES AND AN APPROXIMATION OF A TYPICAL INSTALLATION

COPYRIGHT 2005 BRASSTECH, INC. THESE DRAWINGS AND THE DESIGNS DEPICTED HEREIN ARE THE PROPRIETARY PROPERTY OF BRASSTECH. ANY USE OR REPRODUCTION IS SUBJECT TO THE EXPRESS APPROVAL OF BRASSTECH. UNAUTHORIZED USE IS STRICTLY PROHIBITED. ALL RIGHTS RESERVED.

<b>BRASSTECH</b>		2001 CARNEGIE AVE. SANTA ANA, CA 92705 (949) 417-5207	
INCORPORATED			
DWG NO.	3-2532BP		REV D
SCALE .312	REF. -	SHEET 3 OF 3	