

4

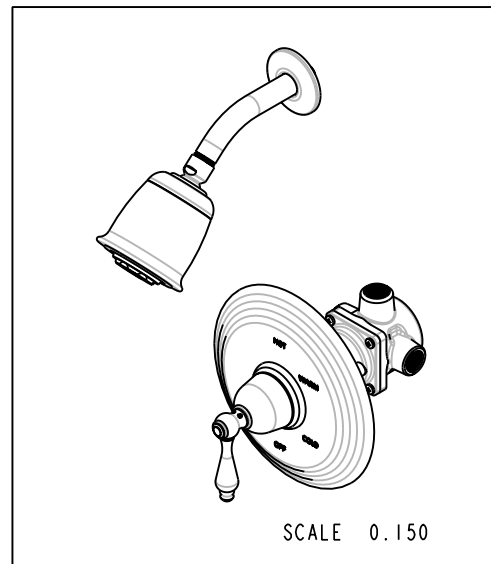
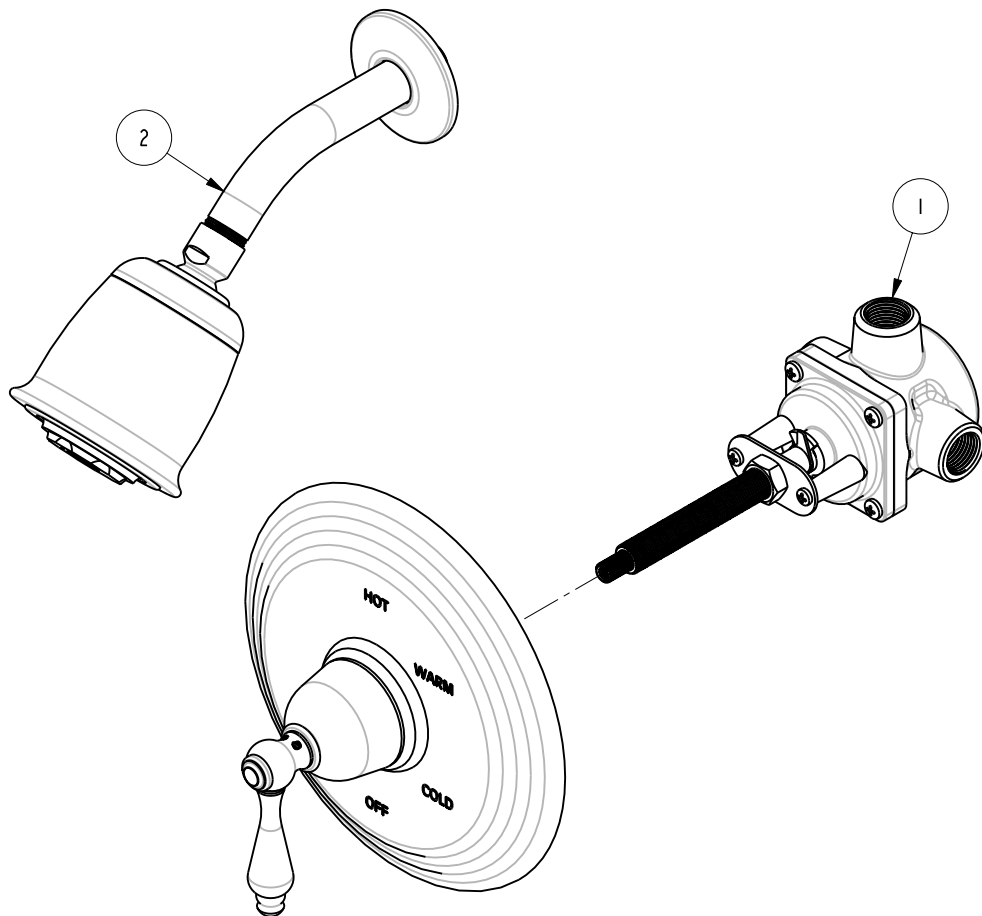
3

2

1

BILL OF MATERIAL (CURRENT LEVEL)

ITEM	PT/ASSY	DESCRIPTION	TYPE	QTY.
1	1-504	BP VALVE ASM W/O DIVERter	ASSEMBLY	1
2	3-804BP	TRIM KIT - BP SHOWER SET	ASSEMBLY	1



COPYRIGHT 2005 BRASSTECH, INC. THESE DRAWINGS AND THE DESIGNS DEPICTED HEREIN ARE THE PROPRIETARY PROPERTY OF BRASSTECH. ANY USE OR REPRODUCTION IS SUBJECT TO THE EXPRESS APPROVAL OF BRASSTECH. UNAUTHORIZED USE IS STRICTLY PROHIBITED. ALL RIGHTS RESERVED.

BRASSTECH
INCORPORATED
2001 E. CARNEGIE AVE.
SANTA ANA, CA 92705
(949) 417-5207

SHOWER SET

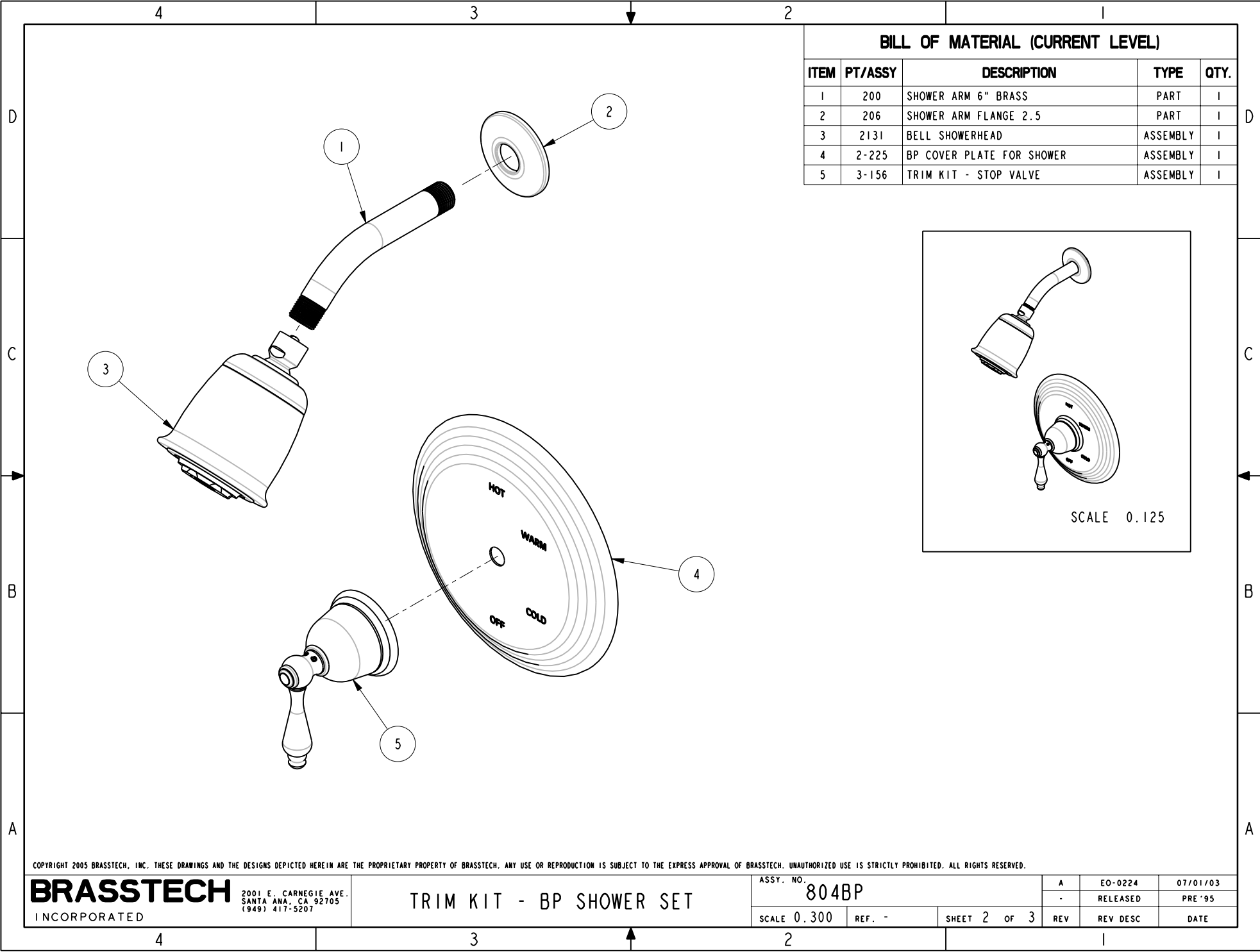
ASSY. NO.
804BP

SCALE 0.250

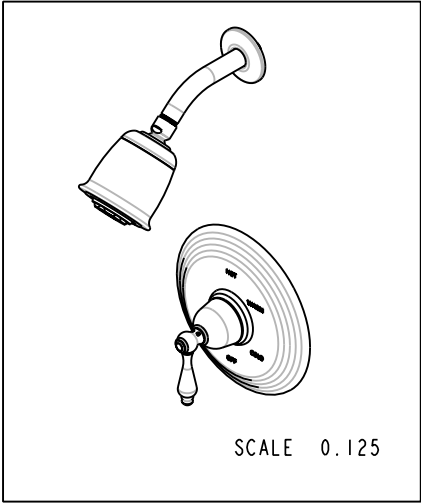
REF. -

SHEET 1 OF 3

A	EO-0224	07/01/03
-	RELEASED	PRE '95
REV	REV DESC	DATE



BILL OF MATERIAL (CURRENT LEVEL)				
ITEM	PT/ASSY	DESCRIPTION	TYPE	QTY.
1	200	SHOWER ARM 6" BRASS	PART	1
2	206	SHOWER ARM FLANGE 2.5	PART	1
3	2131	BELL SHOWERHEAD	ASSEMBLY	1
4	2-225	BP COVER PLATE FOR SHOWER	ASSEMBLY	1
5	3-156	TRIM KIT - STOP VALVE	ASSEMBLY	1



COPYRIGHT 2005 BRASSTECH, INC. THESE DRAWINGS AND THE DESIGNS DEPICTED HEREIN ARE THE PROPRIETARY PROPERTY OF BRASSTECH. ANY USE OR REPRODUCTION IS SUBJECT TO THE EXPRESS APPROVAL OF BRASSTECH. UNAUTHORIZED USE IS STRICTLY PROHIBITED. ALL RIGHTS RESERVED.

BRASSTECH
INCORPORATED
2001 E. CARNEGIE AVE.
SANTA ANA, CA 92705
(949) 417-5207

TRIM KIT - BP SHOWER SET

ASSY. NO.		A	EO-0224	07/01/03
804BP		-	RELEASED	PRE '95
SCALE 0.300	REF. -	SHEET 2 OF 3	REV	REV DESC DATE

SPECIFICATION DWG

I. CUT STEM TO DIMENSION "A".
CUT ALL-THREAD 1/2"
SHORTER THAN STEM

The drawing includes three main views of a door handle assembly:

- Top View:** Shows the handle's profile with a width of 3-3/4 inches and a total length of 7 inches. The mounting plate has four 1/2 NPT ports labeled "4X 1/2 NPT".
- Bottom View:** Shows the handle's profile with a width of 3-1/4 inches and a mounting plate width of 1-1/16 inches. The distance from the mounting plate to the handle end is 3-15/16 inches (max) to 2-9/16 inches (min). The distance from the mounting plate to the "FINISHED WALL" is 1-1/4 inches. The distance from the "FINISHED WALL" to the handle end is dimensioned as "A" (SEE NOTE 1), with a maximum of 7 inches and a minimum of 5-5/8 inches.
- Side View:** Shows the handle's profile with a mounting plate diameter of Ø2-1/2 inches and a thickness of 3/8 inches. The distance from the mounting plate to the handle end is 9-7/16 inches. The distance from the mounting plate to the "FINISHED WALL" is 3-1/16 inches, labeled "AMOUNT OF STEM REQ. FROM FINISHED WALL (SEE NOTE 1)". The handle end has a diameter of Ø7-3/4 inches and a height of 3-3/16 inches. The distance from the mounting plate to the handle end is 3-13/16 inches. The distance from the mounting plate to the handle end is 3-3/8 inches. The distance from the mounting plate to the handle end is 3/4 inches.

BRASSTECH INCORPORATED
2001 E. CARNEGIE AVE.
SANTA ANA, CA 92705
(949) 417-5207

DWG NO. 804BP
SCALE 0.350
REF. -
SHEET 3 OF 3
REV A

DIMENSIONS ARE IN INCHES AND AN APPROXIMATION OF A TYPICAL INSTALLATION

COPYRIGHT 2005 BRASSTECH, INC. THESE DRAWINGS AND THE DESIGNS DEPICTED HEREIN ARE THE PROPRIETARY PROPERTY OF BRASSTECH. ANY USE OR REPRODUCTION IS SUBJECT TO THE EXPRESS APPROVAL OF BRASSTECH. UNAUTHORIZED USE IS STRICTLY PROHIBITED. ALL RIGHTS RESERVED.

COPYRIGHT 2005 BRASSTECH, INC. THESE DRAWINGS AND THE DESIGNS DEPICTED HEREIN ARE THE PROPRIETARY PROPERTY OF BRASSTECH. ANY USE OR REPRODUCTION IS SUBJECT TO THE EXPRESS APPROVAL OF BRASSTECH. UNAUTHORIZED USE IS STRICTLY PROHIBITED. ALL RIGHTS RESERVED.

BRASSTECH INCORPORATED		2001 E. CARNEGIE AVE. SANTA ANA, CA 92705 (949) 417-5207	
DWG NO. 804BP			REV A
SCALE 0.350	REF. -	SHEET 3 OF 3	