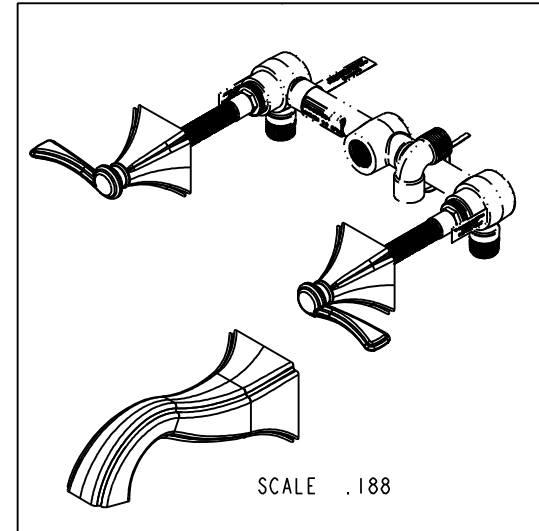
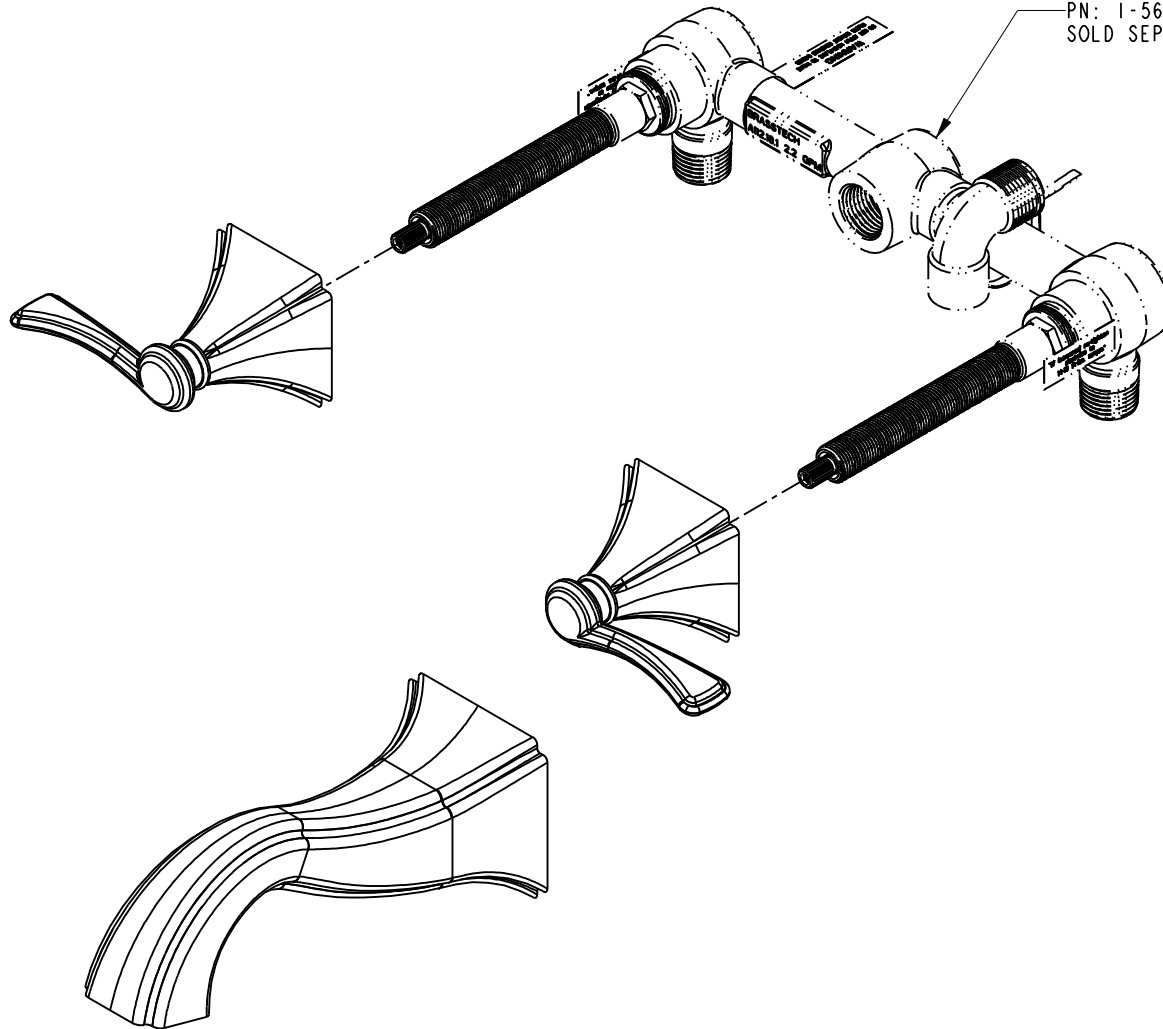


BILL OF MATERIAL (CURRENT LEVEL)

ITEM	PT/ASSY	DESCRIPTION	TYPE	QTY.
1	3-429	LEVER HANDLE / ESC. ASM - COLD	ASSEMBLY	1
2	3-430	LEVER HANDLE / ESC. ASM - HOT	ASSEMBLY	1
3	8-009	TUB WALL SPOUT ASM	ASSEMBLY	1
4	11183	ESCUTCHEON ADAPTER BUSHING	PART	2

SPECIFICATION DWG

PN: 1-564
SOLD SEPERATELY



SCALE .188

DIMENSIONS ARE IN INCHES AND AN APPROXIMATION OF A TYPICAL INSTALLATION

COPYRIGHT 2005 BRASSTECH, INC. THESE DRAWINGS AND THE DESIGNS DEPICTED HEREIN ARE THE PROPRIETARY PROPERTY OF BRASSTECH. ANY USE OR REPRODUCTION IS SUBJECT TO THE EXPRESS APPROVAL OF BRASSTECH. UNAUTHORIZED USE IS STRICTLY PROHIBITED. ALL RIGHTS RESERVED.

BRASSTECH INCORPORATED		2001 E. CARNEGIE AVE. SANTA ANA, CA 92705 (949) 417-5207
DWG NO.	3-2535	REV -
SCALE .375	REF. -	SHEET 2 OF 3

SPECIFICATION DWG

NOTES:

1. CUT STEM TO DIMENSION SHOWN.
2. CUT ALL-THREAD 1/2" SHORTER THAN STEM.
3. VALVE, PN: 1-564, SOLD SEPERATELY.

The drawing shows a side view and a top view of a valve assembly. The side view includes dimensions for the stem (1-7/16 MIN), the distance from the finished wall (4-11/16 MAX), and the distance from the finished wall to the center of the valve (1-7/16 MIN). The top view shows the distance between the two valve stems (8) and the distance from the center of the valve to the center of the stem (4-11/16 MAX). The drawing also includes callouts for the valve (VALVE, PN: 1-564), the stem (THD: 9/16-20), and the finished wall (FINISHED WALL). The drawing is titled 'SPECIFICATION DWG' and includes a table with the following information:

REV	DATE	BY	CHKD	APPD
1	01/01/01	J. J. J.	J. J. J.	J. J. J.

BRASSTECH 2001 E. CARNEGIE AVE.
SANTA ANA, CA 92705
(949) 417-5207

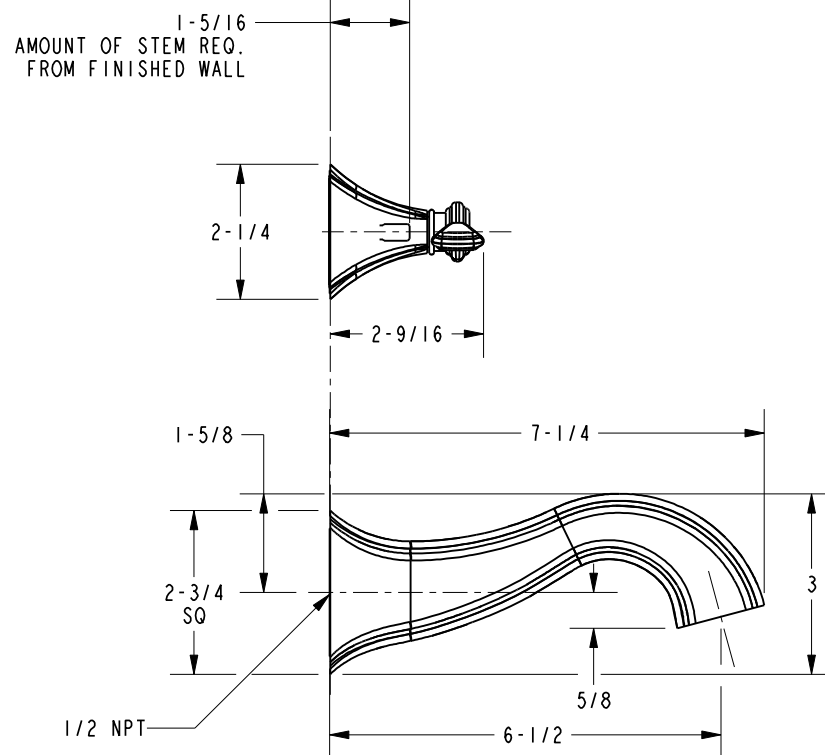
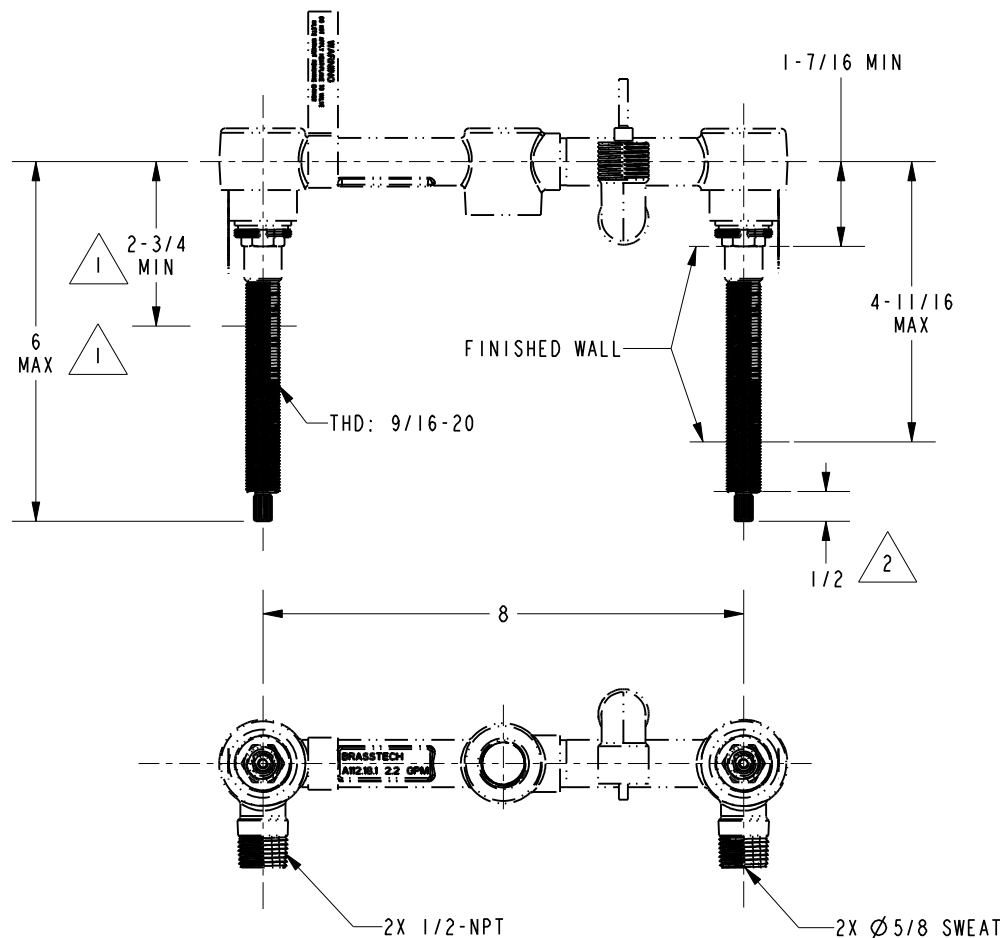
DWG NO. 3-2535

SCALE .313 REF. - SHEET 3 OF 3

DIMENSIONS ARE IN INCHES AND AN APPROXIMATION OF A TYPICAL INSTALLATION

COPYRIGHT 2005 BRASSTECH, INC. THESE DRAWINGS AND THE DESIGNS DEPICTED HEREIN ARE THE PROPRIETARY PROPERTY OF BRASSTECH. ANY USE OR REPRODUCTION IS SUBJECT TO THE EXPRESS APPROVAL OF BRASSTECH. UNAUTHORIZED USE IS STRICTLY PROHIBITED. ALL RIGHTS RESERVED.

1. CUT STEM TO DIMENSION SHOWN.
2. CUT ALL-THREAD 1/2" SHORTER THAN STEM.
3. VALVE, PN: 1-564, SOLD SEPERATELY.



DIMENSIONS ARE IN INCHES AND AN APPROXIMATION OF A TYPICAL INSTALLATION

COPYRIGHT 2005 BRASSTECH, INC. THESE DRAWINGS AND THE DESIGNS DEPICTED HEREIN ARE THE PROPRIETARY PROPERTY OF BRASSTECH. ANY USE OR REPRODUCTION IS SUBJECT TO THE EXPRESS APPROVAL OF BRASSTECH. UNAUTHORIZED USE IS STRICTLY PROHIBITED. ALL RIGHTS RESERVED.

BRASSTECH
INCORPORATED

2001 E. CARNEGIE AVE.
SANTA ANA, CA 92705
(949) 417-5207

DWG NO.		3-2535		REV
				-
SCALE	3/3	REF.	-	SHEET 3 OF 3