

4

3

2

1

D

D

C

C

B

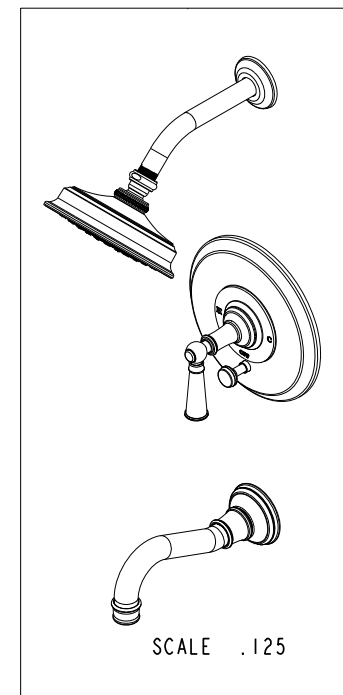
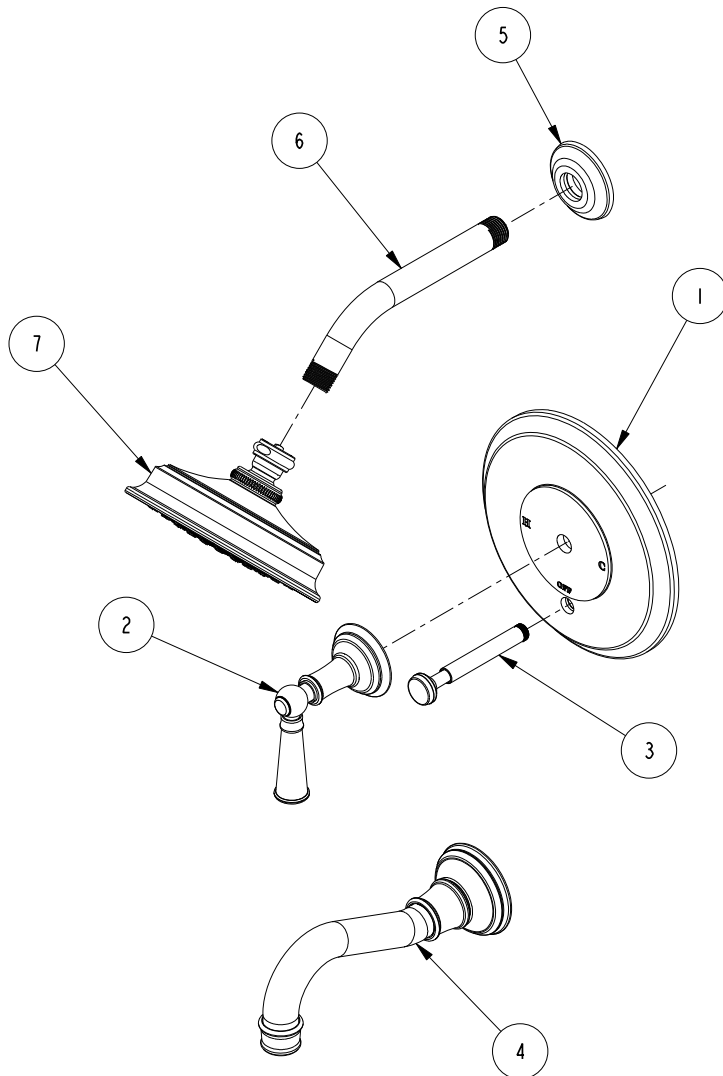
B

A

A

BILL OF MATERIAL (CURRENT LEVEL)

ITEM	PT/ASSY	DESCRIPTION	TYPE	QTY.
1	2-659	TUB/SHOWER PLATE	ASSEMBLY	1
2	3-373	LEVER HANDLE AND ESC. ASM	ASSEMBLY	1
3	2-217	DIVERTER TRIM KIT	ASSEMBLY	1
4	3-382	WALL TUB SPOUT ASSEMBLY	ASSEMBLY	1
5	2-503	SHOWER FLANGE ASM	ASSEMBLY	1
6	50822	8" SHWR ARM (201)	PART	1
7	2142	TRAD. SHOWER HEAD - SINGLE JET	ASSEMBLY	1



COPYRIGHT 2005 BRASSTECH, INC. THESE DRAWINGS AND THE DESIGNS DEPICTED HEREIN ARE THE PROPRIETARY PROPERTY OF BRASSTECH. ANY USE OR REPRODUCTION IS SUBJECT TO THE EXPRESS APPROVAL OF BRASSTECH. UNAUTHORIZED USE IS STRICTLY PROHIBITED. ALL RIGHTS RESERVED.

BRASSTECH
INCORPORATED

2001 E. CARNEGIE AVE.
SANTA ANA, CA 92705
(949) 417-5207

B/P TUB AND SHOWER TRIM KIT

ASSY. NO.

3-2472BP

SCALE .188

REF. -

SHEET 1 OF 3

REV

REV DESC

DATE

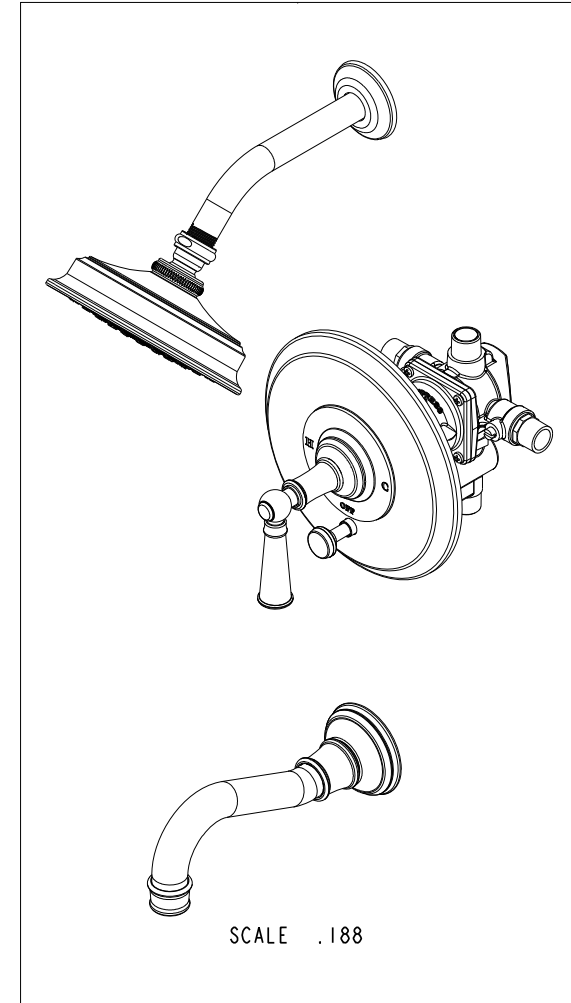
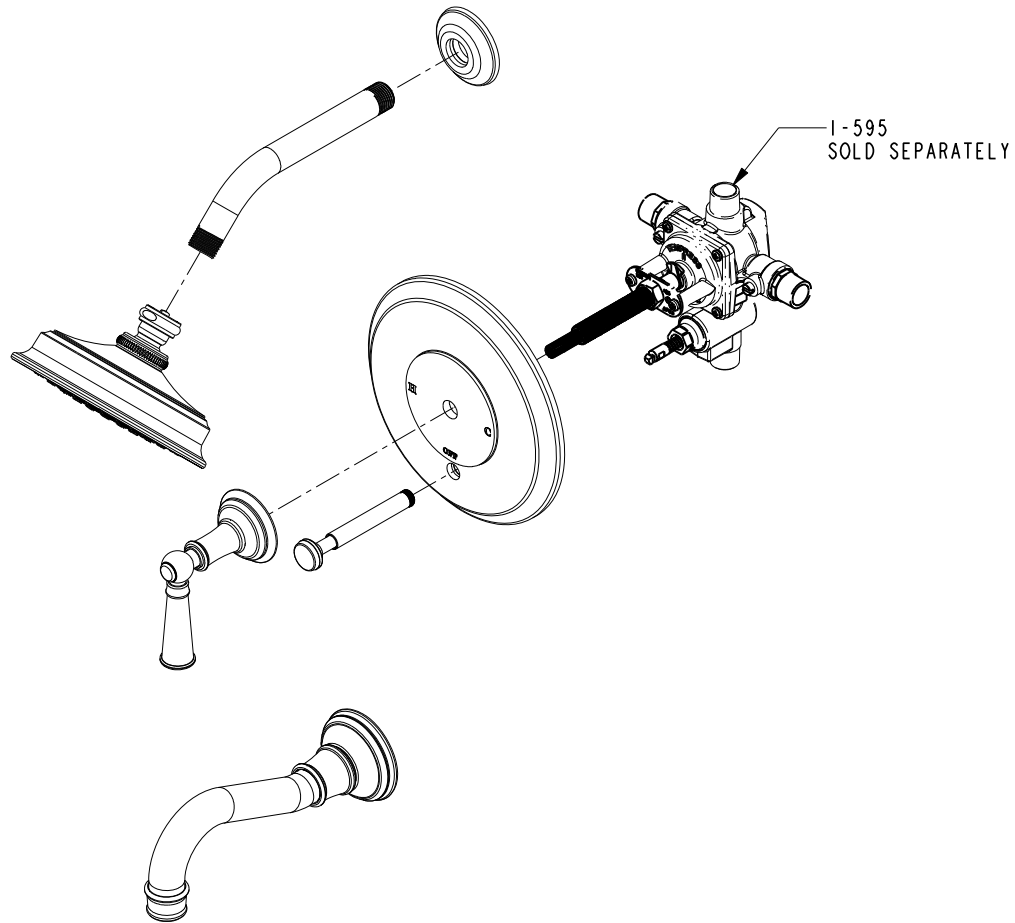
4

3

2

1

SPECIFICATION DWG



DIMENSIONS ARE IN INCHES AND AN APPROXIMATION OF A TYPICAL INSTALLATION

COPYRIGHT 2005 BRASSTECH, INC. THESE DRAWINGS AND THE DESIGNS DEPICTED HEREIN ARE THE PROPRIETARY PROPERTY OF BRASSTECH. ANY USE OR REPRODUCTION IS SUBJECT TO THE EXPRESS APPROVAL OF BRASSTECH. UNAUTHORIZED USE IS STRICTLY PROHIBITED. ALL RIGHTS RESERVED.

BRASSTECH		2001 E. CARNEGIE AVE.
INCORPORATED		SANTA ANA, CA 92705
		(949) 417-5207
DWG NO.	3-2472BP	REV -
SCALE .188	REF. -	SHEET 2 OF 3

4 3 2 1

NOTES:
1. CUT STEM TO DIMENSION SHOWN
2. CUT ALL THREAD 3/4" SHORTER THAN STEM

SPECIFICATION DWG

4 X 1/2 NPT

5-15/16

1-1/4

8-1/8

6-5/8 MAX

6-1/8 MIN

3-15/16 MAX

3-7/16 MIN

FINISHED WALL

5-7/8

2-3/16

3/4

1" DIVERTER AVAILABLE

4-3/4

11

8-7/8

Ø 2-3/8

4-1/16

2-11/16
AMOUNT OF STEM REQ.
FROM FINISHED WALL

Ø 6-3/16

Ø 7-1/2

3-5/16

13/16

8-5/16

Ø 2-3/4

3-1/8

Ø 1-1/4

7-11/16

SCALE .188

BRASSTECH 2001 E. CARNEGIE AVE.
INCORPORATED SANTA ANA, CA 92705
(949) 417-5207

DWG NO. 3-2472BP REV -

SCALE .312 REF. - SHEET 3 OF 3

DIMENSIONS ARE IN INCHES AND AN APPROXIMATION OF A TYPICAL INSTALLATION

COPYRIGHT 2005 BRASSTECH, INC. THESE DRAWINGS AND THE DESIGNS DEPICTED HEREIN ARE THE PROPRIETARY PROPERTY OF BRASSTECH. ANY USE OR REPRODUCTION IS SUBJECT TO THE EXPRESS APPROVAL OF BRASSTECH. UNAUTHORIZED USE IS STRICTLY PROHIBITED. ALL RIGHTS RESERVED.

4 3 2 1

COPYRIGHT 2005 BRASSTECH, INC. THESE DRAWINGS AND THE DESIGNS DEPICTED HEREIN ARE THE PROPRIETARY PROPERTY OF BRASSTECH. ANY USE OR REPRODUCTION IS SUBJECT TO THE EXPRESS APPROVAL OF BRASSTECH. UNAUTHORIZED USE IS STRICTLY PROHIBITED. ALL RIGHTS RESERVED.

BRASSTECH INCORPORATED		2001 E. CARNEGIE AVE. SAINT LOUIS, MO 63105 (314) 417-5207	
DWG NO. 3-2472BP		REV -	
SCALE .312	REF. -	SHEET 3 OF 3	