

NOTES:



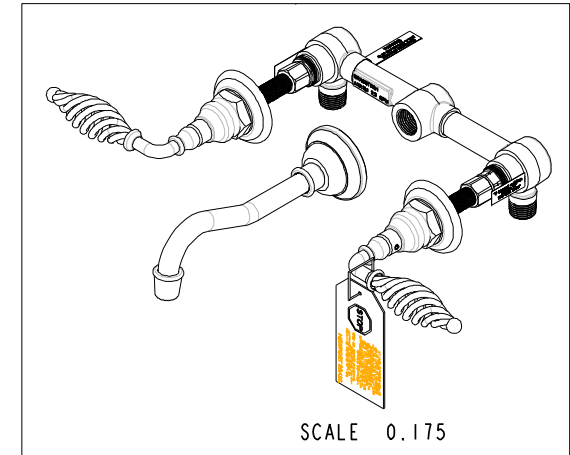
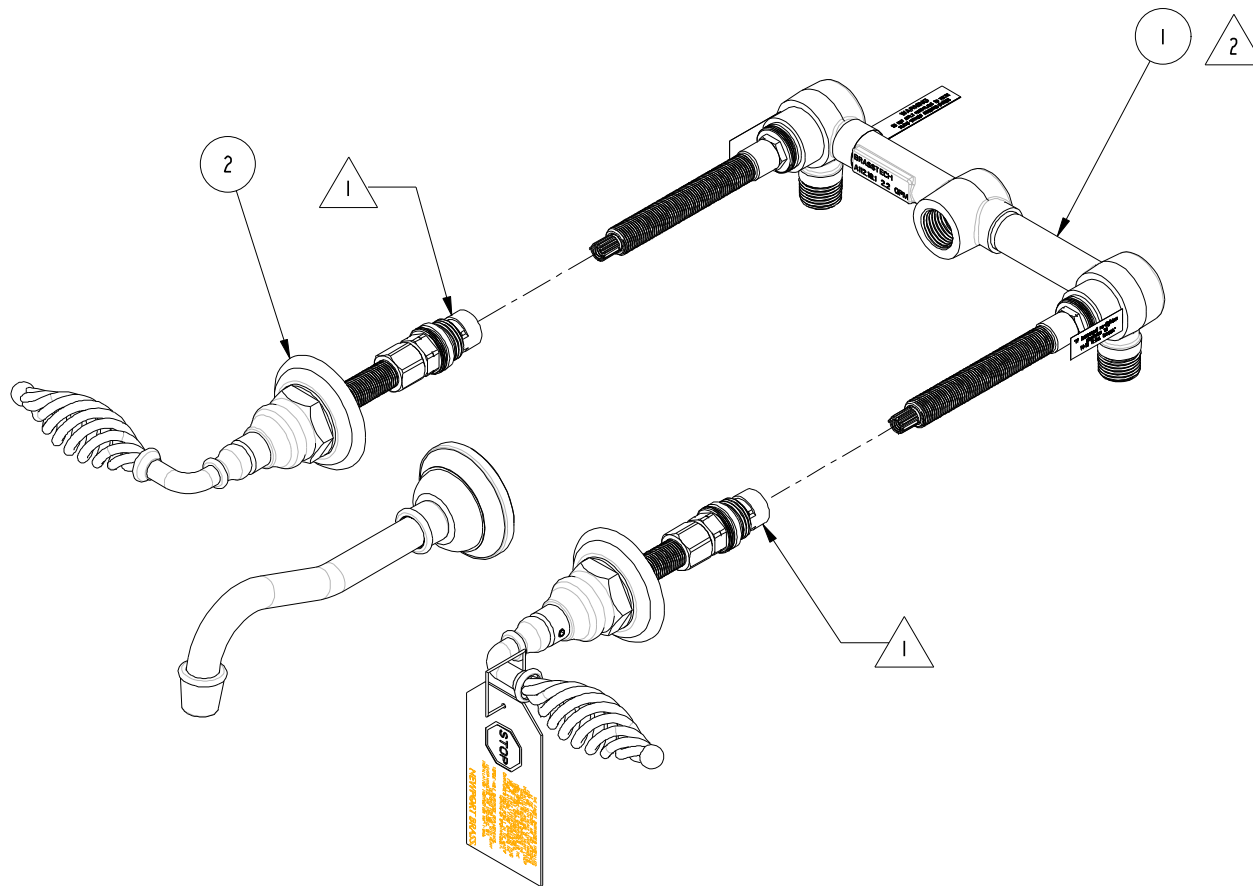
VALVE SHOWN WITH TORQ-ABLE CARTRIDGES THAT ARE SUPPLIED WITH TRIM KIT. THESE CARTRIDGES MUST BE USED TO REPLACE CARTRIDGES THAT ARE SUPPLIED WITH VALVE. TORQUE TO 14-16 FT-LBS.



RECOMMENDED VALVE(S), SHOWN WITH TRIM KIT, SOLD SEPERATELY.

BILL OF MATERIAL (CURRENT LEVEL)

ITEM	PT/ASSY	DESCRIPTION	TYPE	QTY.
1	1-532	WALL LAVATORY KIT	ASSEMBLY	1
2	3-2101	TRIM KIT 3-2101	ASSEMBLY	1



COPYRIGHT 2005 BRASSTECH, INC. THESE DRAWINGS AND THE DESIGNS DEPICTED HEREIN ARE THE PROPRIETARY PROPERTY OF BRASSTECH. ANY USE OR REPRODUCTION IS SUBJECT TO THE EXPRESS APPROVAL OF BRASSTECH. UNAUTHORIZED USE IS STRICTLY PROHIBITED. ALL RIGHTS RESERVED.

BRASSTECH
INCORPORATED
2001 E. CARNEGIE AVE.
SANTA ANA, CA 92705
(949) 417-5207

WALL MOUNTED LAV FAUCET

ASSY. NO.
2101

SCALE 0.275

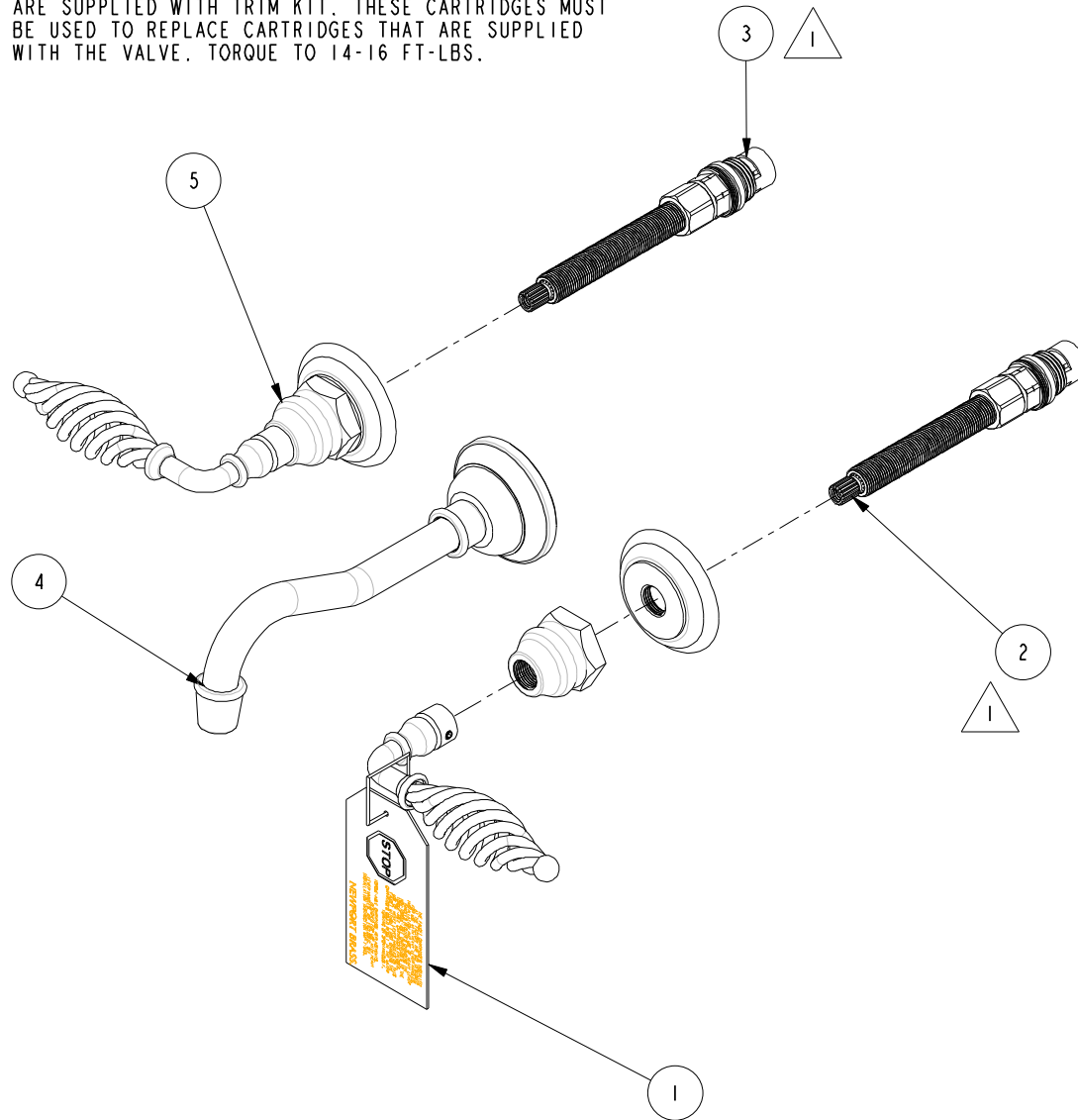
REF. -

SHEET 1 OF 3

C	EN-1176	10/23/09
B	EO-0640	08/21/06
A	EO-0254	09/08/03
-	RELEASED	05/23/00
REV	REV DESC	DATE

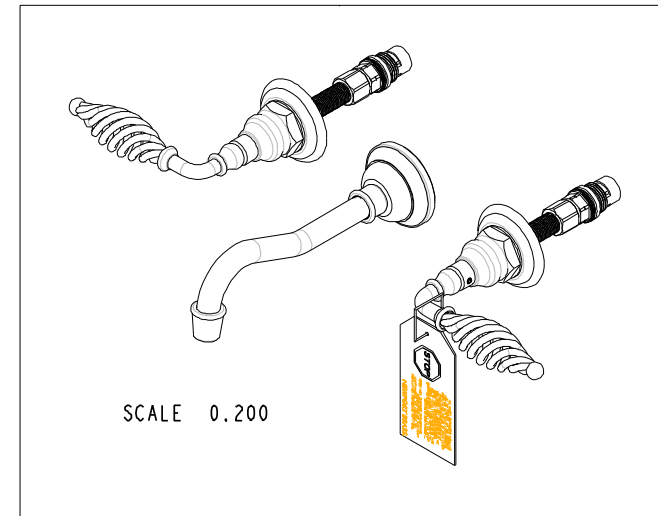


VALVE SHOWN WITH TORQ-ABLE CARTRIDGES THAT ARE SUPPLIED WITH TRIM KIT. THESE CARTRIDGES MUST BE USED TO REPLACE CARTRIDGES THAT ARE SUPPLIED WITH THE VALVE. TORQUE TO 14-16 FT-LBS.



BILL OF MATERIAL (CURRENT LEVEL)

ITEM	PT/ASSY	DESCRIPTION	TYPE	QTY.
1	98062	PRODUCT WARNING LABEL	PART	1
2	1-543	T/S TORQ. CARTRIDGE COLD	ASSEMBLY	1
3	1-544	T/S TORQ. CARTRIDGE HOT	ASSEMBLY	1
4	2-218	SPOUT ASM - LAV IN WALL	ASSEMBLY	1
5	3-228	TRIM KIT - STOP VALVE	ASSEMBLY	2



SCALE 0.200

COPYRIGHT 2005 BRASSTECH, INC. THESE DRAWINGS AND THE DESIGNS DEPICTED HEREIN ARE THE PROPRIETARY PROPERTY OF BRASSTECH. ANY USE OR REPRODUCTION IS SUBJECT TO THE EXPRESS APPROVAL OF BRASSTECH. UNAUTHORIZED USE IS STRICTLY PROHIBITED. ALL RIGHTS RESERVED.

BRASSTECH
INCORPORATED
2001 E. CARNEGIE AVE.
SANTA ANA, CA 92705
(949) 417-5207

TRIM KIT 3-2101

ASSY. NO. 2101

SCALE 0.300

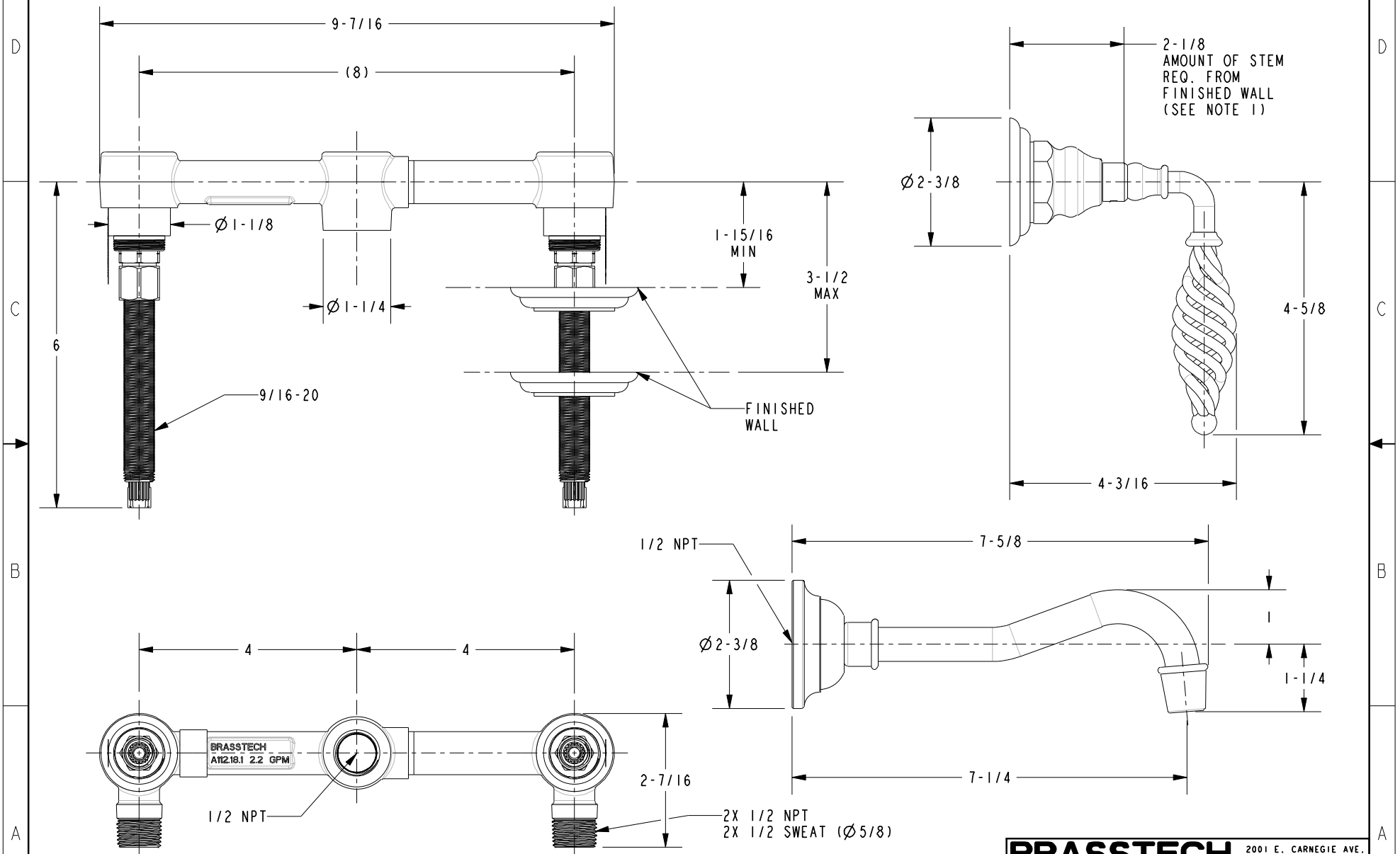
REF. -

SHEET 2 OF 3

C	EN-1176	10/23/09
B	EO-0640	08/21/06
A	EO-0254	09/08/03
-	RELEASED	05/23/00
REV	REV DESC	DATE

SPECIFICATION DWG

1. CUT ALL-THREAD 1/2" SHORTER THAN STEM



DIMENSIONS ARE IN INCHES AND AN APPROXIMATION OF A TYPICAL INSTALLATION

COPYRIGHT 2005 BRASSTECH, INC. THESE DRAWINGS AND THE DESIGNS DEPICTED HEREIN ARE THE PROPRIETARY PROPERTY OF BRASSTECH. ANY USE OR REPRODUCTION IS SUBJECT TO THE EXPRESS APPROVAL OF BRASSTECH. UNAUTHORIZED USE IS STRICTLY PROHIBITED. ALL RIGHTS RESERVED.

BRASSTECH INCORPORATED		2001 E. CARNEGIE AVE. SANTA ANA, CA 92705 (949) 417-5207
DWG NO.	2101	REV C
SCALE 1.000	REF. -	SHEET 3 OF 3