

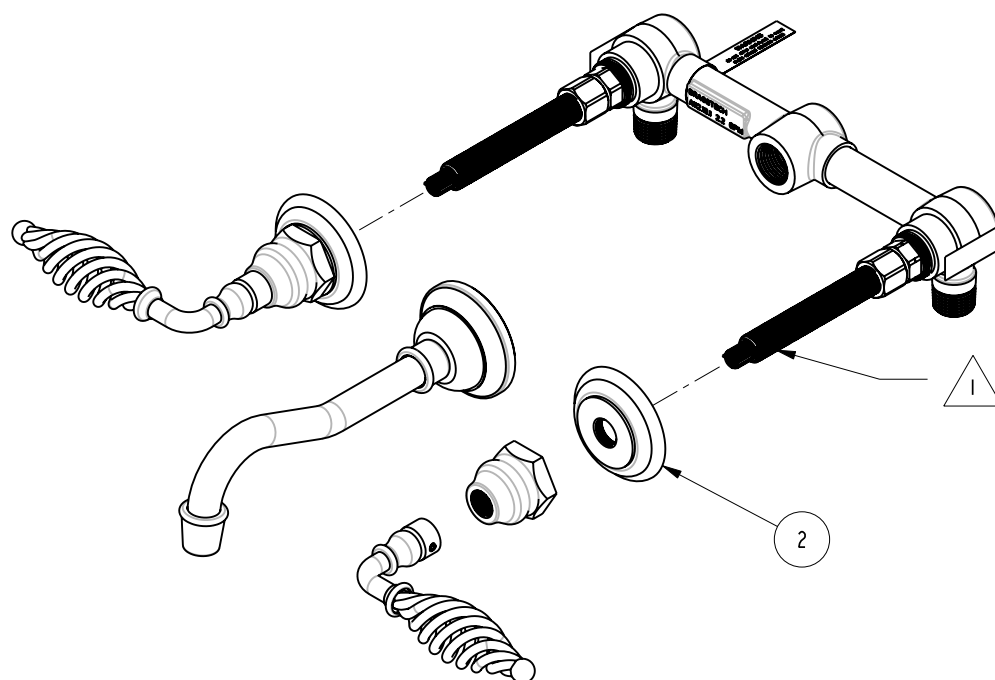
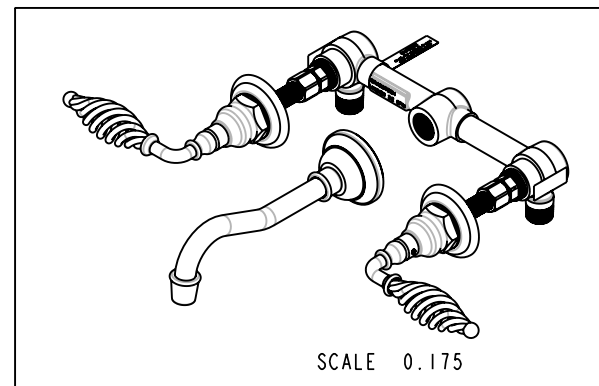
NOTES:



VALVE SHOWN WITH TORO-ABLE CARTRIDGES THAT ARE SUPPLIED WITH TRIM KIT. THESE CARTRIDGES MUST BE USED TO REPLACE CARTRIDGES THAT ARE SUPPLIED WITH VALVE. TORQUE TO 14-16 FT-LBS.

BILL OF MATERIAL (CURRENT LEVEL)

| ITEM | PT/ASSY | DESCRIPTION | TYPE | QTY. |
|------|---------|----------------------------|----------|------|
| 1 | 1-532C | WALL LAVATORY KIT 1/2" NPT | ASSEMBLY | 1 |
| 2 | 3-2101 | TRIM KIT 3-2101 | ASSEMBLY | 1 |



COPYRIGHT 2005 BRASSTECH, INC. THESE DRAWINGS AND THE DESIGNS DEPICTED HEREIN ARE THE PROPRIETARY PROPERTY OF BRASSTECH. ANY USE OR REPRODUCTION IS SUBJECT TO THE EXPRESS APPROVAL OF BRASSTECH. UNAUTHORIZED USE IS STRICTLY PROHIBITED. ALL RIGHTS RESERVED.

BRASSTECH
INCORPORATED
2001 E. CARNEGIE AVE.
SANTA ANA, CA 92705
(949) 417-5207

WALL MOUNTED LAV FAUCET

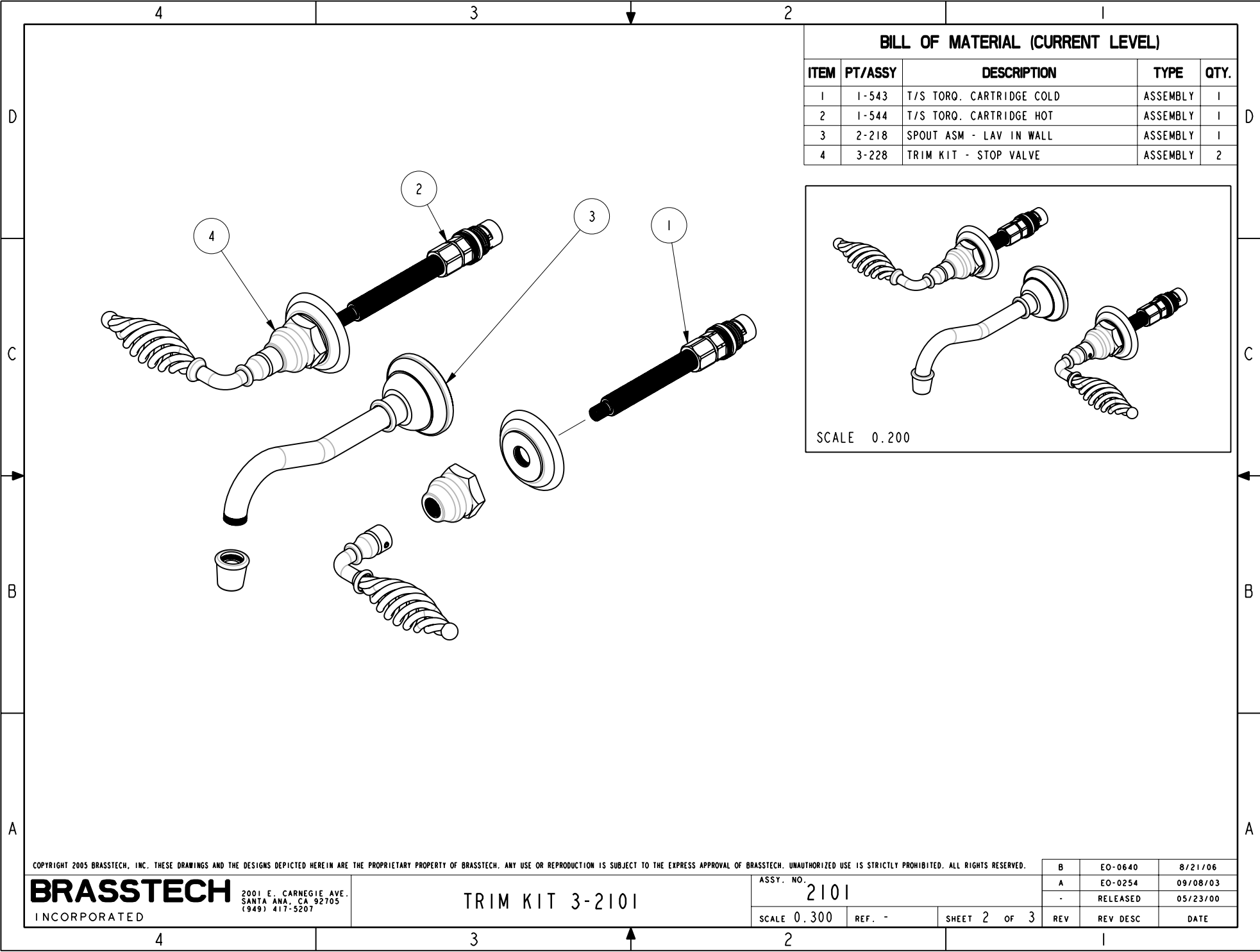
ASSY. NO.
2101

SCALE 0.275

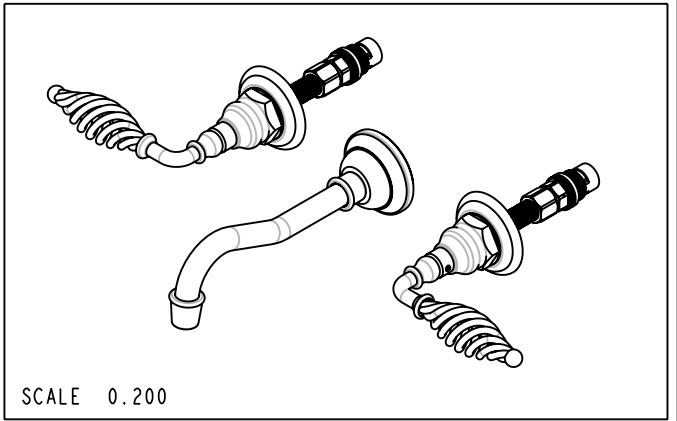
REF. -

SHEET 1 OF 3

| | | |
|-----|----------|----------|
| B | EO-0640 | 08/21/06 |
| A | EO-0254 | 09/08/03 |
| - | RELEASED | 05/23/00 |
| REV | REV DESC | DATE |

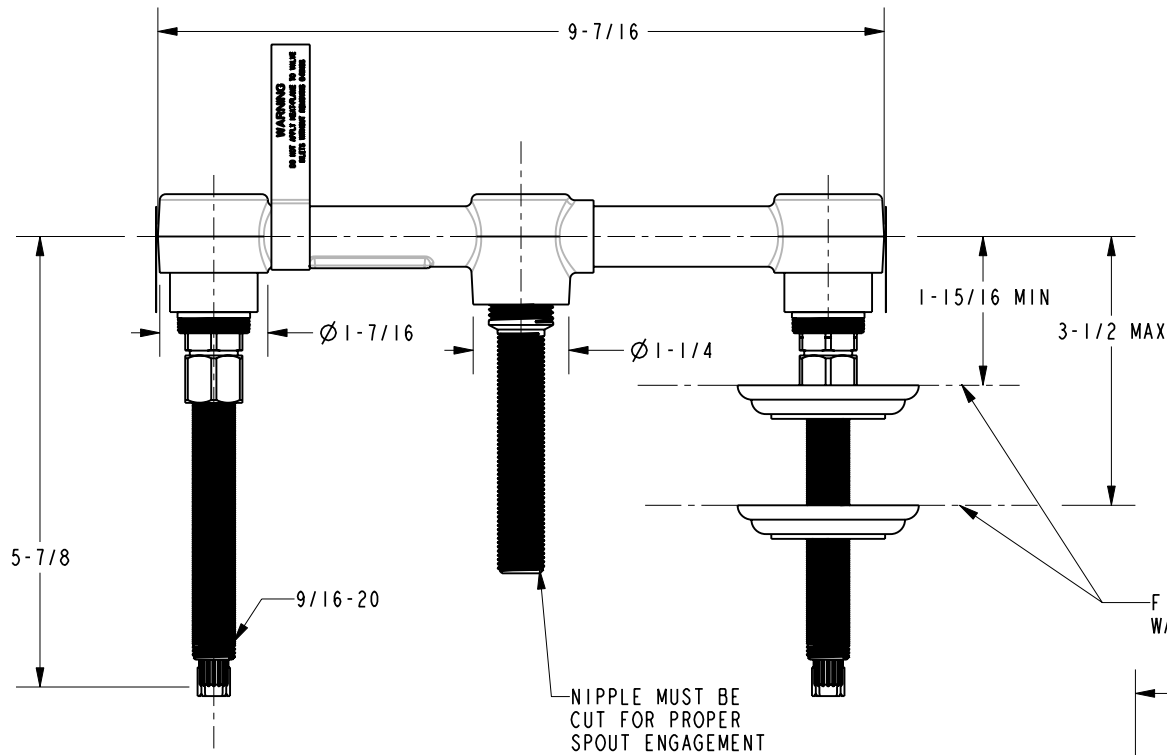


| BILL OF MATERIAL (CURRENT LEVEL) | | | | |
|----------------------------------|---------|--------------------------|----------|------|
| ITEM | PT/ASSY | DESCRIPTION | TYPE | QTY. |
| 1 | 1-543 | T/S TORQ. CARTRIDGE COLD | ASSEMBLY | 1 |
| 2 | 1-544 | T/S TORQ. CARTRIDGE HOT | ASSEMBLY | 1 |
| 3 | 2-218 | SPOUT ASM - LAV IN WALL | ASSEMBLY | 1 |
| 4 | 3-228 | TRIM KIT - STOP VALVE | ASSEMBLY | 2 |

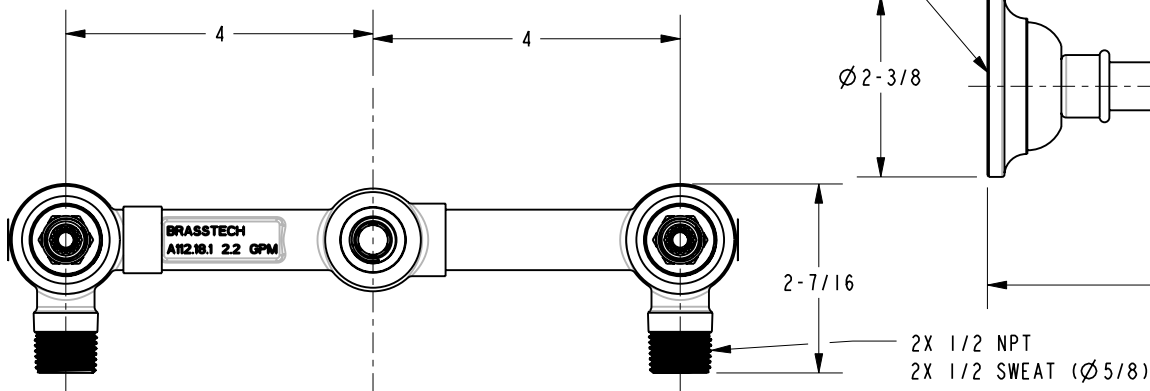
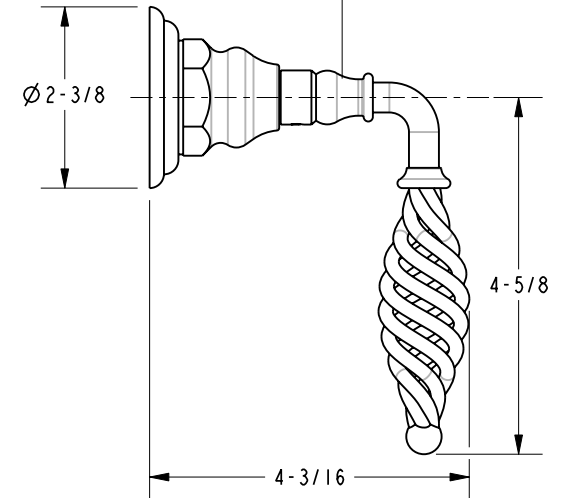


SPECIFICATION DWG

1. CUT ALL-THREAD 1/2" SHORTER THAN STEM



2-1/2
AMOUNT OF STEM
REQ. FROM
FINISHED WALL
(SEE NOTE 1)



DIMENSIONS ARE IN INCHES AND AN APPROXIMATION OF A TYPICAL INSTALLATION

COPYRIGHT 2005 BRASSTECH, INC. THESE DRAWINGS AND THE DESIGNS DEPICTED HEREIN ARE THE PROPRIETARY PROPERTY OF BRASSTECH. ANY USE OR REPRODUCTION IS SUBJECT TO THE EXPRESS APPROVAL OF BRASSTECH. UNAUTHORIZED USE IS STRICTLY PROHIBITED. ALL RIGHTS RESERVED.

| | | |
|----------------------------------|--------|--|
| BRASSTECH INCORPORATED | | 2001 E. CARNEGIE AVE. SANTA ANA, CA 92705 (949) 417-5207 |
| DWG NO. | 2101 | REV B |
| SCALE 1,000 | REF. - | SHEET 3 OF 3 |