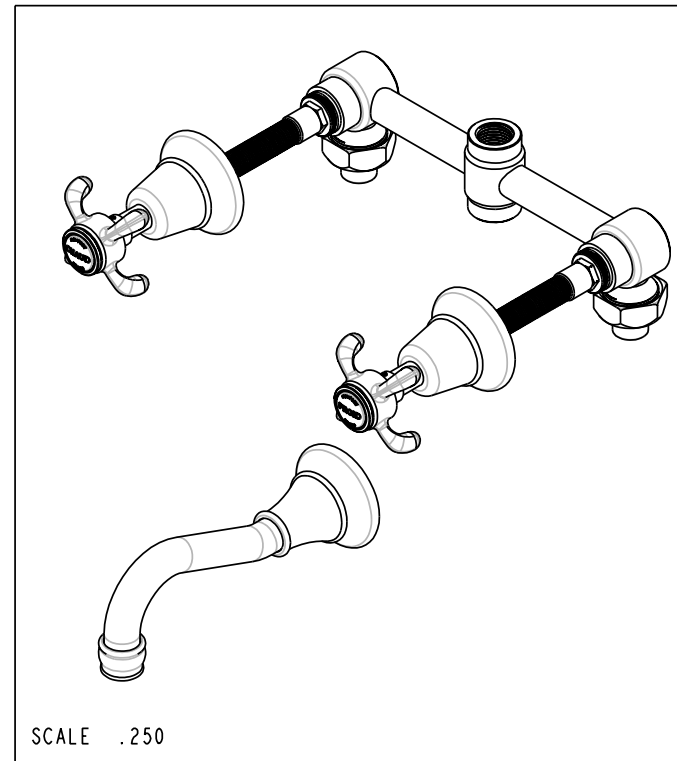


# BILL OF MATERIAL (CURRENT LEVEL)

ITEM	PT/ASSY	DESCRIPTION	TYPE	QTY.
1	1-500	T/S 2 - VALVE ROUGH	ASSEMBLY	1
2	3-1685	TRIM KIT - 3-1685	ASSEMBLY	1



NOTE: RECOMMENDED VALVE(S), SHOWN WITH TRIM KIT, SOLD SEPERATELY.

COPYRIGHT 2005 BRASSTECH, INC. THESE DRAWINGS AND THE DESIGNS DEPICTED HEREIN ARE THE PROPRIETARY PROPERTY OF BRASSTECH. ANY USE OR REPRODUCTION IS SUBJECT TO THE EXPRESS APPROVAL OF BRASSTECH. UNAUTHORIZED USE IS STRICTLY PROHIBITED. ALL RIGHTS RESERVED.

**BRASSTECH**  
INCORPORATED  
2001 E. CARNEGIE AVE.  
SANTA ANA, CA 92705  
(949) 417-5207

TUB SET

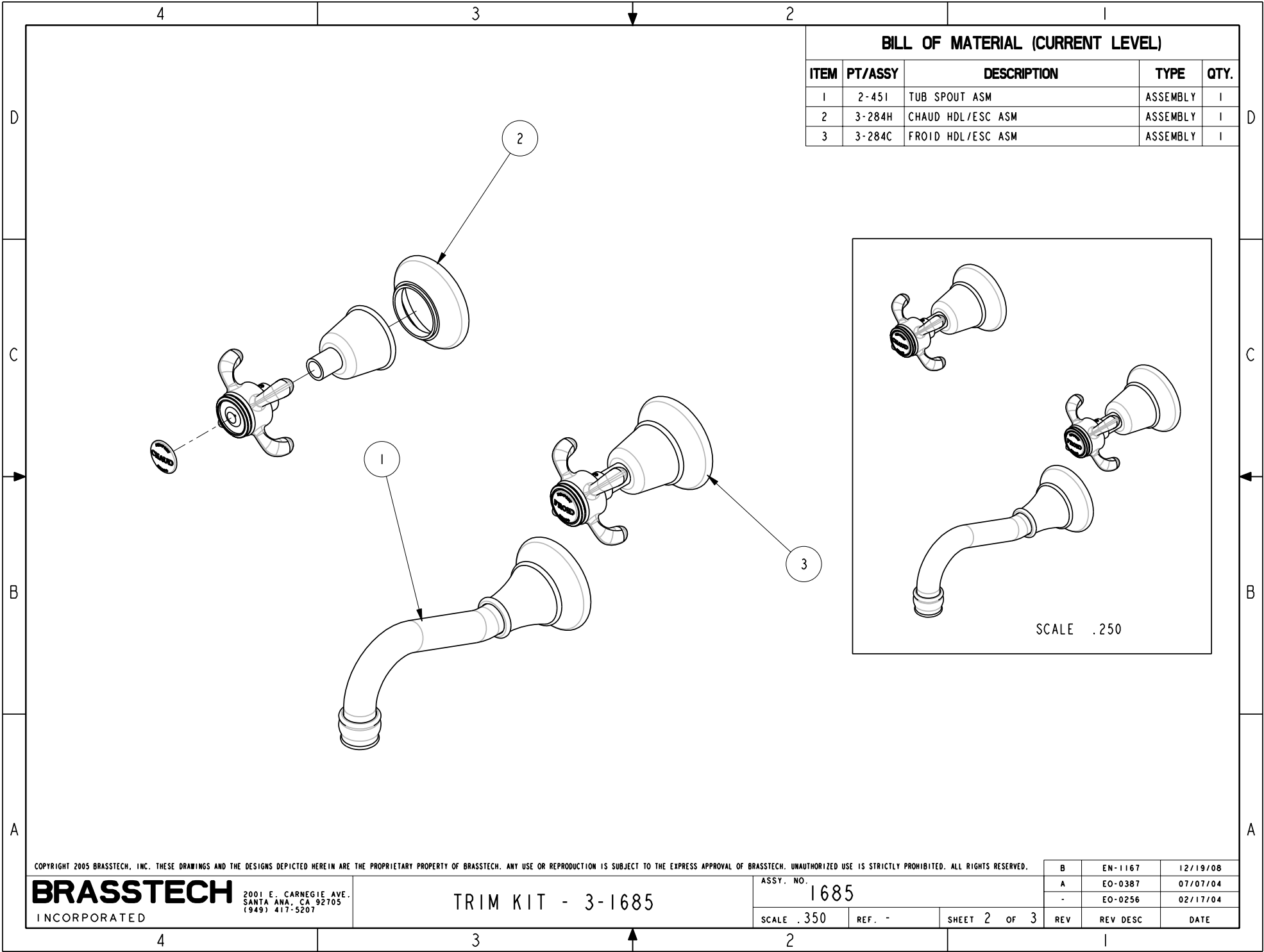
ASSY. NO. 1685

SCALE .300

REF. -

SHEET 1 OF 3

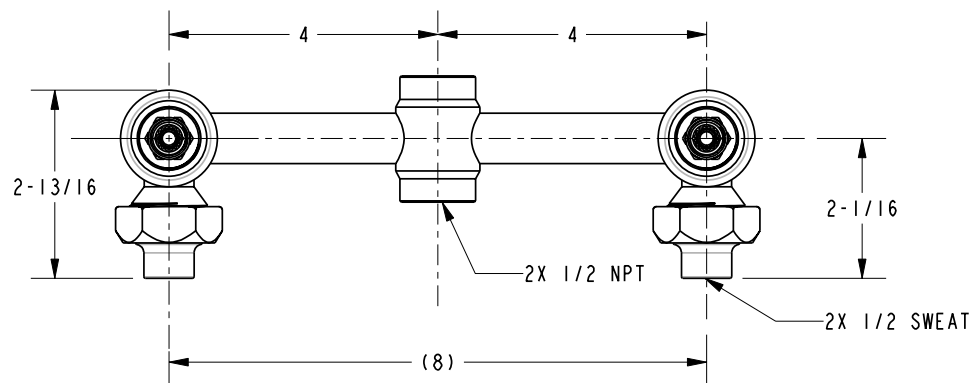
B	EN-1167	12/19/08
A	EO-0387	07/07/04
-	EO-0256	02/17/04
REV	REV DESC	DATE



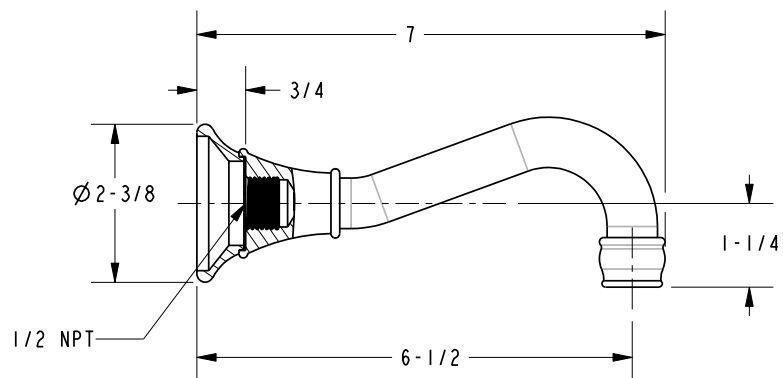
BILL OF MATERIAL (CURRENT LEVEL)				
ITEM	PT/ASSY	DESCRIPTION	TYPE	QTY.
1	2-451	TUB SPOUT ASM	ASSEMBLY	1
2	3-284H	CHAUD HDL/ESC ASM	ASSEMBLY	1
3	3-284C	FROID HDL/ESC ASM	ASSEMBLY	1

NOTES:

- 
- Technical drawing of a 1/2 inch diameter, 10 foot long, 100 lb. test rated tie rod. The drawing shows a side view of the tie rod with a central nut and washers. Dimensions include a total length of 9-7/16 inches, a distance of (8) inches between the ends, a diameter of 1-1/8 inches for the threaded section, and a height of 6 inches for the end fitting. The end fitting is labeled "FINISHED WALL".



COPYRIGHT 2005 BRASSTECH, INC. THESE DRAWINGS AND THE DESIGNS DEPICTED HEREIN ARE THE PROPRIETARY PROPERTY OF BRASSTECH. ANY USE OR REPRODUCTION IS SUBJECT TO THE EXPRESS APPROVAL OF BRASSTECH. UNAUTHORIZED USE IS STRICTLY PROHIBITED. ALL RIGHTS RESERVED.

[illegible]

<b>BRASSTECH</b> INCORPORATED		2001 E. CARNEGIE AVE. STATE AVE. #2705 (949) 417-5207	
DWG NO. 1685			REV B
SCALE	350	REF.	-
SHEET	3	OF	3