

4 3 2 1

**SPECIFICATION DWG**

1. CUT ALL-THREAD 1/2" SHORTER THAN STEM

9-7/16  
(8)  
6  
Ø 1-1/8  
Ø 9/16  
MIN  
MAX 3-1/8  
FINISHED WALL  
2-7/8  
AMOUNT OF STEM REQUIRED FROM FINISHED WALL (SEE NOTE 1)  
2-1/8 SQ  
3-1/2  
2-9/16  
4  
4  
2-13/16  
(8)  
2 X 1/2" NPT  
2 X 1/2" SWEAT CONNECTION  
3/4 IPS  
7-3/8  
3-11/16  
2-3/16  
1-1/2  
1-9/16

DIMENSIONS ARE IN INCHES AND AN APPROXIMATION OF A TYPICAL INSTALLATION

COPYRIGHT 2003 BRASSTECH, INC. THESE DRAWINGS AND THE DESIGNS DEPICTED HEREIN ARE THE PROPRIETARY PROPERTY OF BRASSTECH. ANY USE OR REPRODUCTION IS SUBJECT TO THE EXPRESS APPROVAL OF BRASSTECH. UNAUTHORIZED USE IS STRICTLY PROHIBITED. ALL RIGHTS RESERVED.

<b>BRASSTECH</b> INCORPORATED	2001 E. CARNEGIE AVE. SANTA ANA, CA 92705 (949) 417-5207	TUB SET WALL	ASSY. NO.	A	EO-0292	11/20/03
			1045_SPEC	-	RELEASED	04/29/02
SCALE 0.325	REF. -	SHEET 1 OF 1	REV	REV	DESC	DATE

4 3 2 1

A B C D

4 3 2 1

**SPECIFICATION DWG**

1. CUT ALL-THREAD 1/2" SHORTER THAN STEM

The drawing illustrates the assembly of a Tub Set Wall. The front view shows a horizontal pipe with a central flange and two end fittings. Dimensions include a total length of 9-7/16 inches, a central flange diameter of 8 inches, and a distance of 6 inches from the left end to the first fitting. The side view shows the profile of the pipe with a minimum thickness of 3-1/8 inches and a maximum thickness of 3-1/8 inches. A detail view shows the connection between the pipe and the wall, with dimensions for the pipe diameter (1-1/8 inches), the wall thickness (2-1/8 inches), and the distance from the wall to the pipe centerline (2-9/16 inches). A cross-section view shows the pipe (3/4 IPS) with a wall thickness of 3-11/16 inches, a distance of 2-3/16 inches from the wall to the pipe centerline, and a distance of 1-1/2 inches from the wall to the pipe centerline. The drawing also shows the connection between the pipe and the wall, with dimensions for the pipe diameter (1-1/8 inches), the wall thickness (2-1/8 inches), and the distance from the wall to the pipe centerline (2-9/16 inches).

9-7/16

(8)

6

Ø 1-1/8

Ø 9/16

MIN

MAX 3-1/8

FINISHED WALL

2-7/8

AMOUNT OF STEM REQUIRED FROM FINISHED WALL (SEE NOTE 1)

2-1/8 SQ

2-9/16

3-1/2

4

4

2-13/16

(8)

2 X 1/2" NPT

2 X 1/2" SWEAT CONNECTION

3/4 IPS

7-3/8

3-11/16

2-3/16

1-1/2

1-9/16

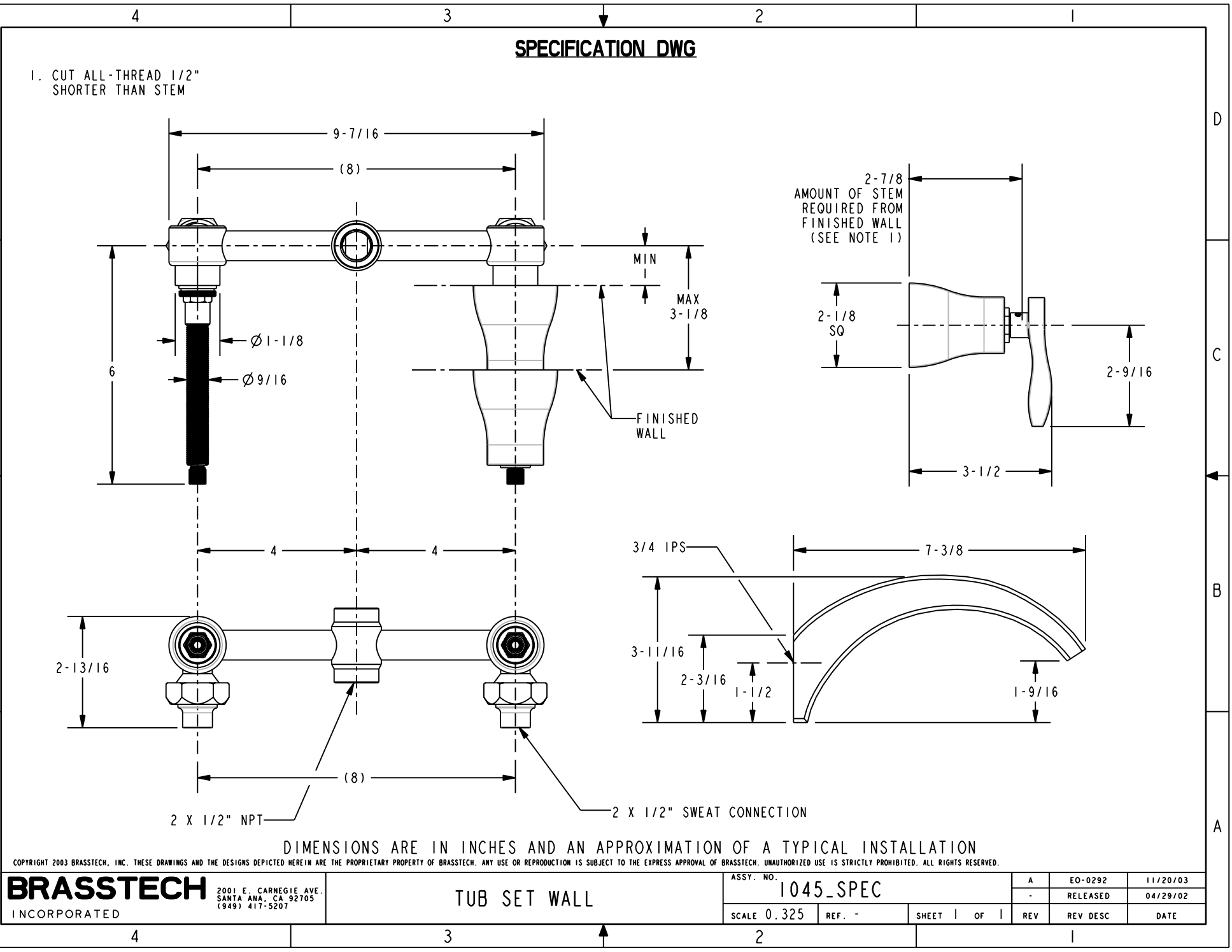
DIMENSIONS ARE IN INCHES AND AN APPROXIMATION OF A TYPICAL INSTALLATION

COPYRIGHT 2003 BRASSTECH, INC. THESE DRAWINGS AND THE DESIGNS DEPICTED HEREIN ARE THE PROPRIETARY PROPERTY OF BRASSTECH. ANY USE OR REPRODUCTION IS SUBJECT TO THE EXPRESS APPROVAL OF BRASSTECH. UNAUTHORIZED USE IS STRICTLY PROHIBITED. ALL RIGHTS RESERVED.

<b>BRASSTECH</b> INCORPORATED	2001 E. CARNEGIE AVE. SANTA ANA, CA 92705 (949) 417-5207	TUB SET WALL	ASSY. NO.	A	EO-0292	11/20/03
			1045_SPEC	-	RELEASED	04/29/02
SCALE 0.325	REF. -	SHEET 1 OF 1	REV	REV	DESC	DATE

4 3 2 1

A



4 3 2 1

**SPECIFICATION DWG**

1. CUT ALL-THREAD 1/2" SHORTER THAN STEM

The drawing includes the following views and dimensions:

- Side View (Top):** Shows a horizontal assembly with a total length of 9-7/16 inches. The distance between the center of the left and right connections is 8 inches. The left connection has a vertical height of 6 inches. The right connection is shown with a vertical range from MIN to MAX 3-1/8 inches, relative to a FINISHED WALL line.
- End View (Bottom):** Shows the assembly from the end, with a total width of 8 inches. The distance between the center of the left and right connections is 4 inches. The left connection has a vertical height of 2-13/16 inches. The right connection is labeled "2 X 1/2" SWEAT CONNECTION".
- Detail View (Right):** Shows a cross-section of the connection. The distance from the finished wall to the center of the connection is 2-7/8 inches. The amount of stem required from the finished wall is noted as (SEE NOTE 1). The connection has a vertical height of 2-9/16 inches and a horizontal width of 3-1/2 inches.
- Detail View (Bottom Right):** Shows a cross-section of the connection. The distance from the finished wall to the center of the connection is 7-3/8 inches. The connection has a vertical height of 3-11/16 inches. The distance from the finished wall to the center of the connection is 2-3/16 inches. The connection has a horizontal width of 1-9/16 inches.

Dimensions are in inches and an approximation of a typical installation.

**BRASSTECH** 2001 E. CARNEGIE AVE. SANTA ANA, CA 92705 (949) 417-5207

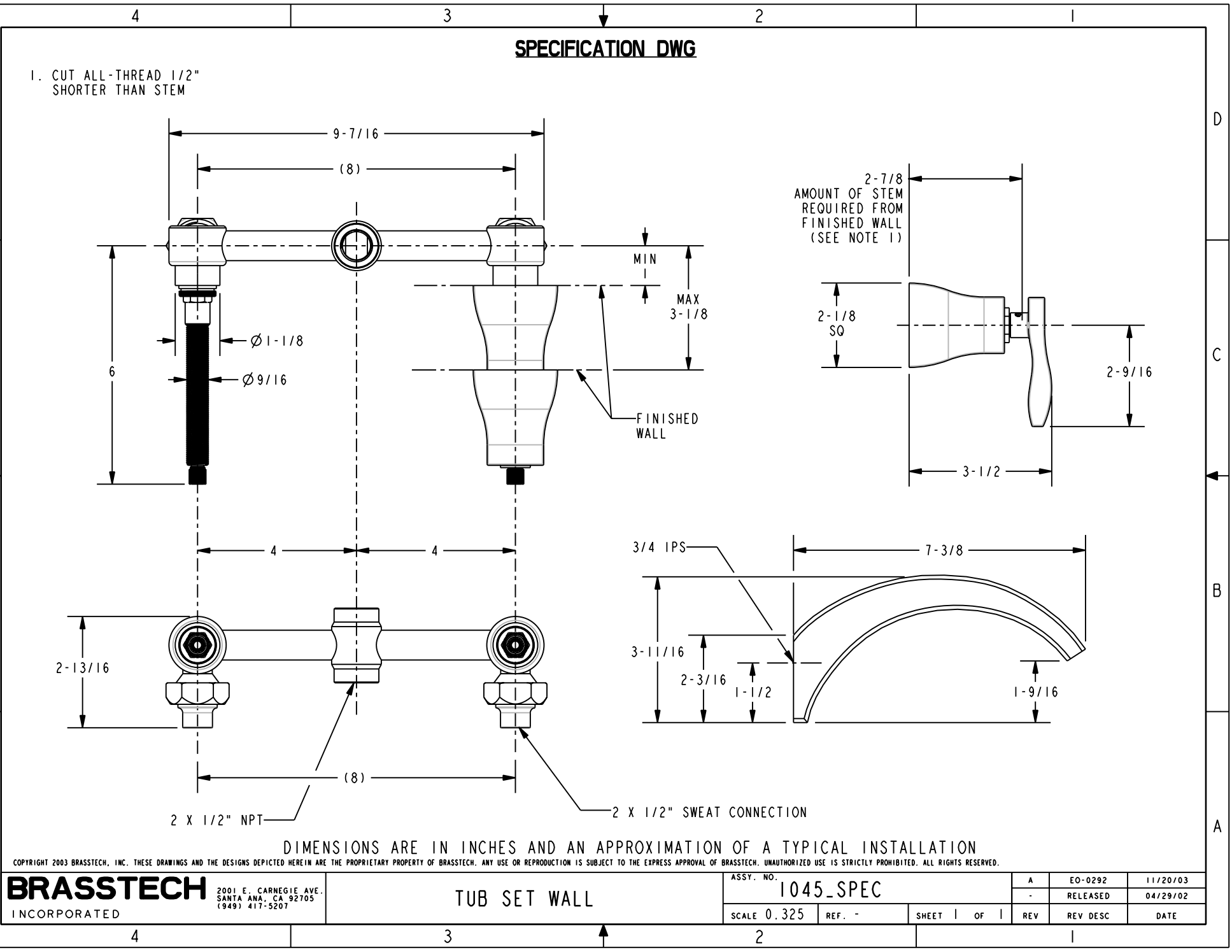
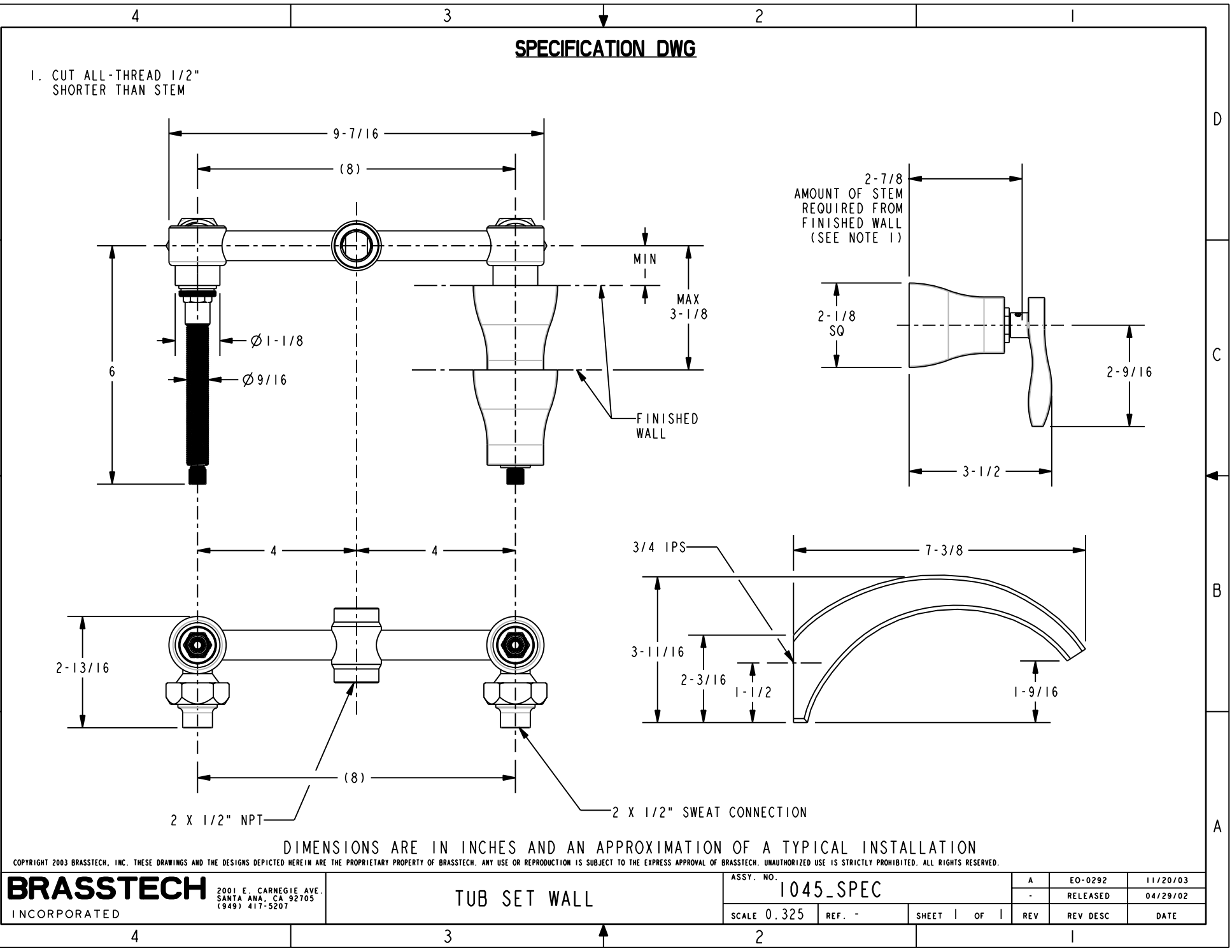
**TUB SET WALL**

ASSY. NO. 1045\_SPEC

SCALE 0.325 REF. - SHEET 1 OF 1

REV	REV DESC	DATE
A	EO-0292	11/20/03
-	RELEASED	04/29/02

4 3 2 1



4 3 2 1

**SPECIFICATION DWG**

1. CUT ALL-THREAD 1/2" SHORTER THAN STEM

9-7/16  
(8)  
6  
Ø 1-1/8  
Ø 9/16  
MIN  
MAX 3-1/8  
FINISHED WALL  
2-7/8  
AMOUNT OF STEM REQUIRED FROM FINISHED WALL (SEE NOTE 1)  
2-1/8 SQ  
3-1/2  
2-9/16  
4  
4  
2-13/16  
(8)  
2 X 1/2" NPT  
2 X 1/2" SWEAT CONNECTION  
3/4 IPS  
7-3/8  
3-11/16  
2-3/16  
1-1/2  
1-9/16

DIMENSIONS ARE IN INCHES AND AN APPROXIMATION OF A TYPICAL INSTALLATION

COPYRIGHT 2003 BRASSTECH, INC. THESE DRAWINGS AND THE DESIGNS DEPICTED HEREIN ARE THE PROPRIETARY PROPERTY OF BRASSTECH. ANY USE OR REPRODUCTION IS SUBJECT TO THE EXPRESS APPROVAL OF BRASSTECH. UNAUTHORIZED USE IS STRICTLY PROHIBITED. ALL RIGHTS RESERVED.

<b>BRASSTECH</b> INCORPORATED	2001 E. CARNEGIE AVE. SANTA ANA, CA 92705 (949) 417-5207	<b>TUB SET WALL</b>	ASSY. NO. 1045_SPEC		A	EO-0292	11/20/03
			SCALE 0.325 REF. - SHEET 1 OF 1		-	RELEASED	04/29/02
					REV	REV DESC	DATE

4 3 2 1

A B C D

[illegible]

**SPECIFICATION DWG**

1. CUT ALL-THREAD 1/2" SHORTER THAN STEM

The drawing illustrates the installation of a Tub Set Wall. It includes three main views:

- Side View (Top Left):** Shows the horizontal alignment of the wall. Dimensions include a total length of 9-7/16 inches, a distance of (8) inches between components, a vertical offset of 6 inches, and diameters of Ø 1-1/8 and Ø 9/16.
- End View (Bottom Left):** Shows the cross-section of the wall. Dimensions include a height of 2-13/16 inches, a width of (8) inches, and labels for "2 X 1/2\" NPT" and "2 X 1/2\" SWEAT CONNECTION".
- Detail View (Right):** Provides a close-up of the stem connection. It shows a flange with a diameter of 2-1/8 SO and a stem with a diameter of 2-9/16 inches. The distance from the finished wall to the start of the stem is labeled as 2-7/8 inches, with a note stating "AMOUNT OF STEM REQUIRED FROM FINISHED WALL (SEE NOTE 1)". Other dimensions shown are 3-1/2 inches and 2-9/16 inches.

**Dimensions and Notes:**

- MIN MAX 3-1/8
- FINISHED WALL
- 3/4 IPS
- 7-3/8
- 3-11/16
- 2-3/16
- 1-1/2
- 1-9/16

DIMENSIONS ARE IN INCHES AND AN APPROXIMATION OF A TYPICAL INSTALLATION

COPYRIGHT 2003 BRASSTECH, INC. THESE DRAWINGS AND THE DESIGNS DEPICTED HEREIN ARE THE PROPRIETARY PROPERTY OF BRASSTECH. ANY USE OR REPRODUCTION IS SUBJECT TO THE EXPRESS APPROVAL OF BRASSTECH. UNAUTHORIZED USE IS STRICTLY PROHIBITED. ALL RIGHTS RESERVED.

<b>BRASSTECH</b> INCORPORATED	2001 E. CARNEGIE AVE. SANTA ANA, CA 92705 (949) 417-5207	TUB SET WALL	ASSY. NO.	A	EO-0292	11/20/03
			1045_SPEC	-	RELEASED	04/29/02
SCALE 0.325	REF. -	SHEET 1 OF 1	REV	REV DESC	DATE	

4 3 2 1

**SPECIFICATION DWG**

1. CUT ALL-THREAD 1/2" SHORTER THAN STEM

9-7/16  
(8)  
6  
Ø 1-1/8  
Ø 9/16  
MIN  
MAX 3-1/8  
FINISHED WALL  
2-7/8  
AMOUNT OF STEM REQUIRED FROM FINISHED WALL (SEE NOTE 1)  
2-1/8 SQ  
2-9/16  
3-1/2  
4  
4  
2-13/16  
(8)  
2 X 1/2" NPT  
2 X 1/2" SWEAT CONNECTION  
3/4 IPS  
7-3/8  
3-11/16  
2-3/16  
1-1/2  
1-9/16

DIMENSIONS ARE IN INCHES AND AN APPROXIMATION OF A TYPICAL INSTALLATION

COPYRIGHT 2003 BRASSTECH, INC. THESE DRAWINGS AND THE DESIGNS DEPICTED HEREIN ARE THE PROPRIETARY PROPERTY OF BRASSTECH. ANY USE OR REPRODUCTION IS SUBJECT TO THE EXPRESS APPROVAL OF BRASSTECH. UNAUTHORIZED USE IS STRICTLY PROHIBITED. ALL RIGHTS RESERVED.

<b>BRASSTECH</b> INCORPORATED	2001 E. CARNEGIE AVE. SANTA ANA, CA 92705 (949) 417-5207	TUB SET WALL	ASSY. NO.	A	EO-0292	11/20/03
			1045_SPEC	-	RELEASED	04/29/02
SCALE 0.325	REF. -	SHEET 1 OF 1	REV	REV	DESC	DATE

4 3 2 1

A B C D

4 3 2 1

**SPECIFICATION DWG**

1. CUT ALL-THREAD 1/2" SHORTER THAN STEM

9-7/16  
(8)  
6  
Ø 1-1/8  
Ø 9/16  
MIN  
MAX 3-1/8  
FINISHED WALL  
2-7/8  
AMOUNT OF STEM REQUIRED FROM FINISHED WALL (SEE NOTE 1)  
2-1/8 SQ  
2-9/16  
3-1/2  
4  
4  
2-13/16  
(8)  
2 X 1/2" NPT  
2 X 1/2" SWEAT CONNECTION  
3/4 IPS  
7-3/8  
3-11/16  
2-3/16  
1-1/2  
1-9/16

DIMENSIONS ARE IN INCHES AND AN APPROXIMATION OF A TYPICAL INSTALLATION

COPYRIGHT 2003 BRASSTECH, INC. THESE DRAWINGS AND THE DESIGNS DEPICTED HEREIN ARE THE PROPRIETARY PROPERTY OF BRASSTECH. ANY USE OR REPRODUCTION IS SUBJECT TO THE EXPRESS APPROVAL OF BRASSTECH. UNAUTHORIZED USE IS STRICTLY PROHIBITED. ALL RIGHTS RESERVED.

<b>BRASSTECH</b> INCORPORATED	2001 E. CARNEGIE AVE. SANTA ANA, CA 92705 (949) 417-5207	TUB SET WALL	ASSY. NO.	A	EO-0292	11/20/03
			1045_SPEC	-	RELEASED	04/29/02
SCALE 0.325	REF. -	SHEET 1 OF 1	REV	REV	DESC	DATE

4 3 2 1

A B C D

4 3 2 1

**SPECIFICATION DWG**

1. CUT ALL-THREAD 1/2" SHORTER THAN STEM

9-7/16  
(8)  
6  
Ø 1-1/8  
Ø 9/16  
MIN  
MAX 3-1/8  
FINISHED WALL  
2-7/8  
AMOUNT OF STEM REQUIRED FROM FINISHED WALL (SEE NOTE 1)  
2-1/8 SQ  
2-9/16  
3-1/2  
4  
4  
2-13/16  
(8)  
2 X 1/2" NPT  
2 X 1/2" SWEAT CONNECTION  
3/4 IPS  
7-3/8  
3-11/16  
2-3/16  
1-1/2  
1-9/16

DIMENSIONS ARE IN INCHES AND AN APPROXIMATION OF A TYPICAL INSTALLATION

COPYRIGHT 2003 BRASSTECH, INC. THESE DRAWINGS AND THE DESIGNS DEPICTED HEREIN ARE THE PROPRIETARY PROPERTY OF BRASSTECH. ANY USE OR REPRODUCTION IS SUBJECT TO THE EXPRESS APPROVAL OF BRASSTECH. UNAUTHORIZED USE IS STRICTLY PROHIBITED. ALL RIGHTS RESERVED.

<b>BRASSTECH</b> INCORPORATED	2001 E. CARNEGIE AVE. SANTA ANA, CA 92705 (949) 417-5207	TUB SET WALL	ASSY. NO.	A	EO-0292	11/20/03
			1045_SPEC	-	RELEASED	04/29/02
SCALE 0.325	REF. -	SHEET 1 OF 1	REV	REV	DESC	DATE

4 3 2 1

A B C D