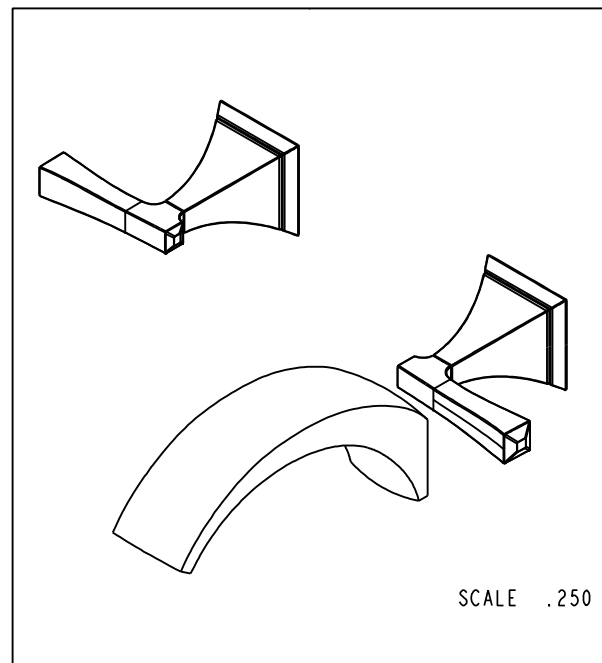


NOTES:
 (N1) 1. FIT / FORM / FUNCTION SHALL FOLLOW PS-E.008.

BILL OF MATERIAL (CURRENT LEVEL)				
ITEM	PT/ASSY	DESCRIPTION	TYPE	QTY.
1	20-258	TUB WALL SPOUT ASM	ASSEMBLY	1
2	3-594	LEVER HANDLE W/ESC.	ASSEMBLY	2



TESTING	-	-	-	UNITS ARE: INCHES [MM]
ASSEMBLY	-	-	-	TOLERANCES ARE:
PLATING	-	-	-	FRACTIONS DECIMALS ANGLES
POLISHING	-	NEXT ASSY	USED ON	$\pm 1/16"$.X $\pm .1$ [2,5] $\pm 1^\circ$
MACHINING	-	APPLICATION		.XX $\pm .06$ [1,5]
TOOLING FIXTURE #	REMOVE ALL BURRS AND SHARP EDGES			(X.XXX) DENOTES CRITICAL DIMS. ALL THREADS ARE CRITICAL

BRASSTECH 2001 CARNEGIE AVE.
 INCORPORATED SANTA ANA, CA 92705
 (949) 417-5207

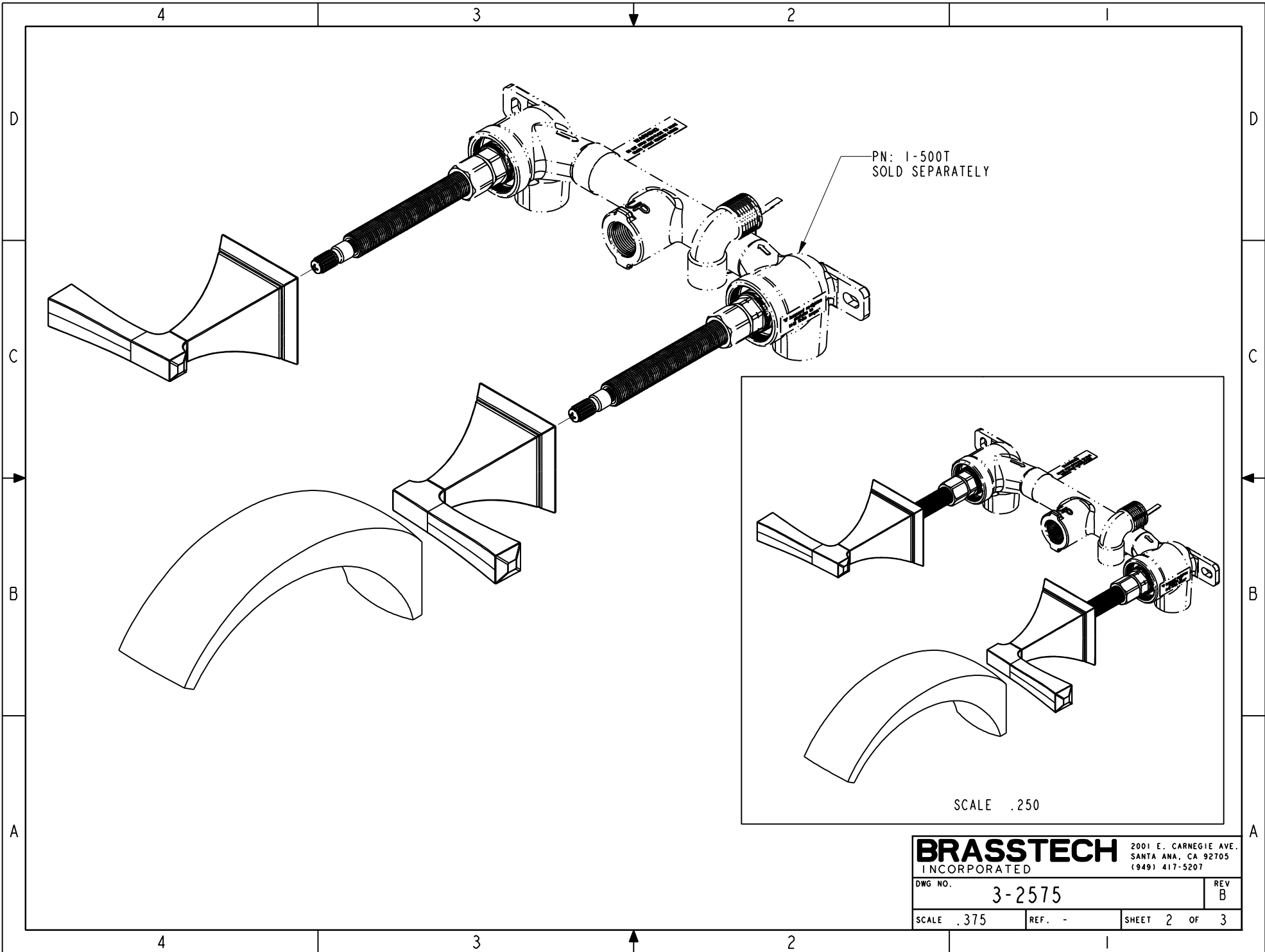
WALL MOUNTED TUB TRIM KIT

DWG NO. **3-2575** REV B

SCALE .375 REF. - SHEET 1 OF 3

ZONE	REV	DESCRIPTION	DATE	APPROVED
-	B	EN-3223	01/31/17	J.A
-	A	EN-3185	11/09/16	R.S
-	-	EN-2367b	05/13/15	J.M

COPYRIGHT 2005 BRASSTECH, INC.
 THESE DRAWINGS AND THE DESIGNS
 DEPICTED HEREIN ARE THE PROPRIETARY
 PROPERTY OF BRASSTECH. ANY USE
 OR REPRODUCTION IS SUBJECT TO
 THE EXPRESS APPROVAL OF BRASSTECH.
 UNAUTHORIZED USE IS STRICTLY
 PROHIBITED. ALL RIGHTS RESERVED.



NOTES:

1. CUT STEM AS SHOWN.

2. CUT ALL THREADS 1" SHORTER THAN STEM.

D

C

B

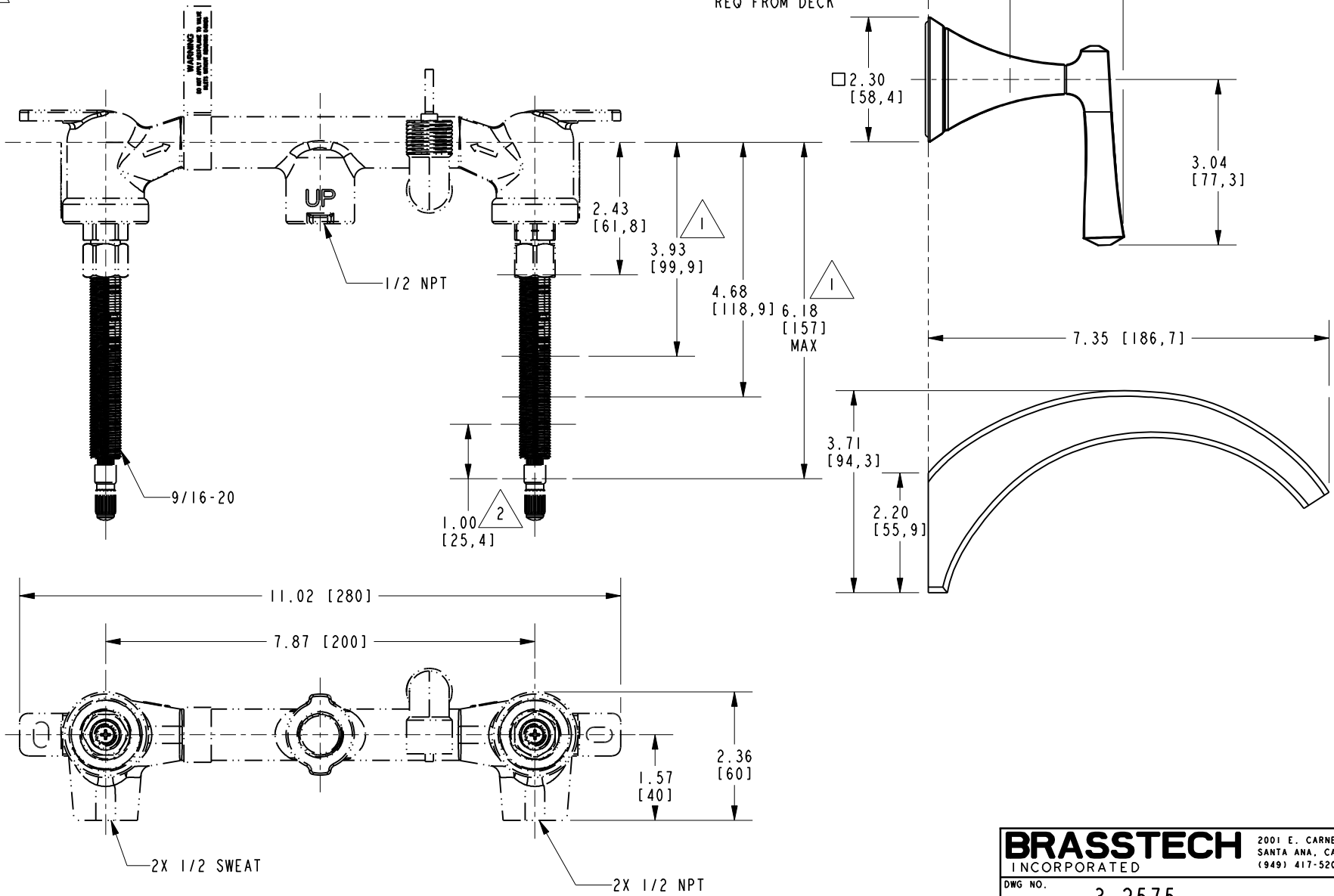
A

D

C

B

A



BRASSTECH		2001 E. CARNEGIE AVE. SANTA ANA, CA 92705 (949) 417-5207	
DWG NO.	3-2575		REV B
SCALE .375	REF. -	SHEET 3 OF 3	