

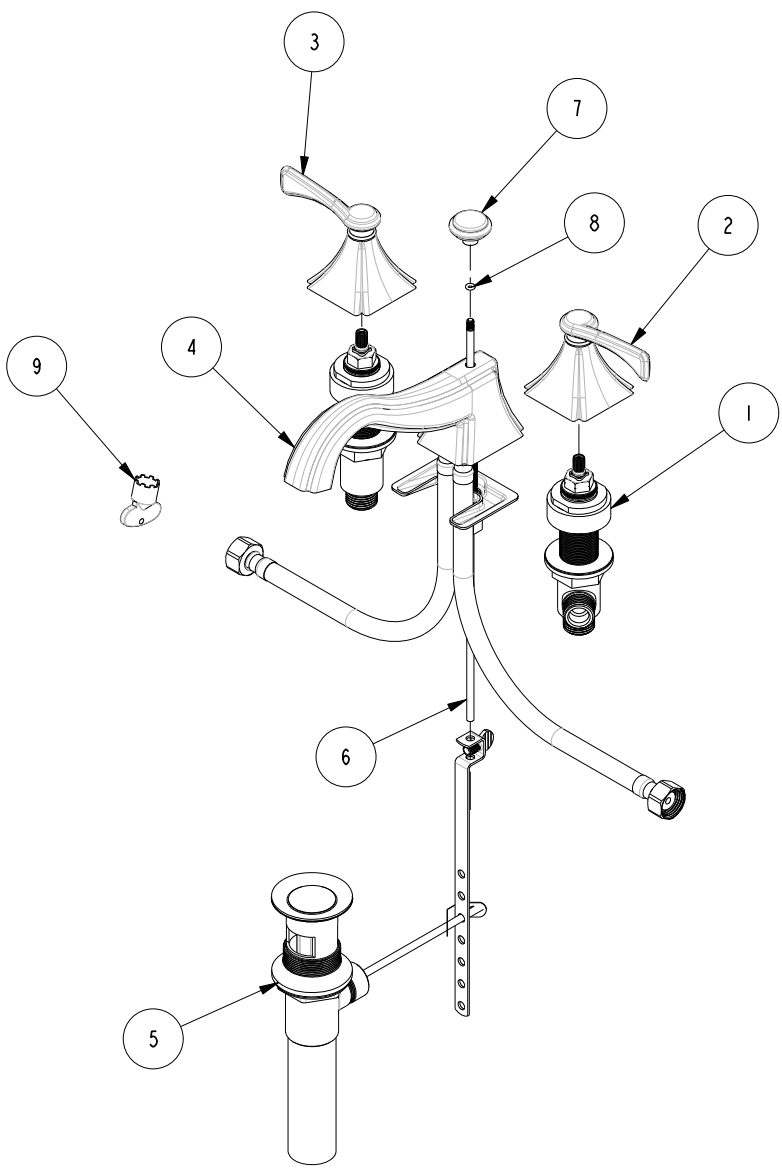
4 3 2 1

D

C

B

A



BILL OF MATERIAL (CURRENT LEVEL)

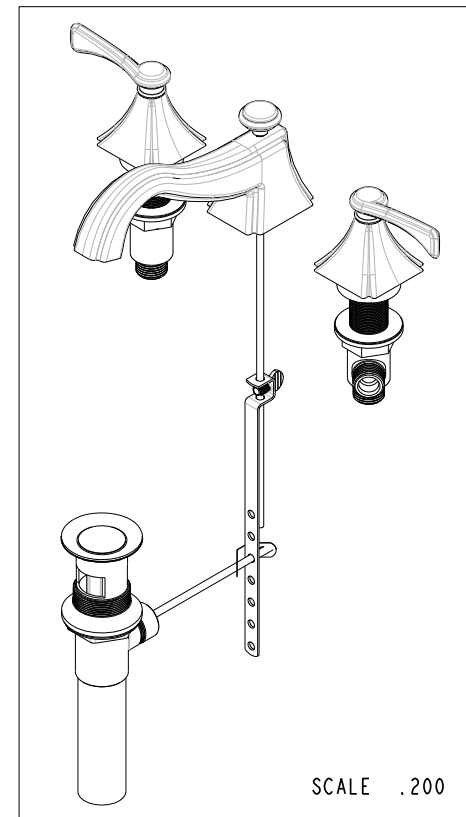
ITEM	PT/ASSY	DESCRIPTION	TYPE	QTY.
1	1-591	WIDE SPREAD VALVE KIT	ASSEMBLY	1
2	3-429	LEVER HANDLE / ESC. ASM - COLD	ASSEMBLY	1
3	3-430	LEVER HANDLE / ESC. ASM - HOT	ASSEMBLY	1
4	8-108	CIRCE W/S SPOUT ASM	ASSEMBLY	1
5	325	POP UP ASSEMBLY	ASSEMBLY	1
6	10288	3/16" POP UP ROD	PART	1
7	80005	POP UP KNOB, ROUND	PART	1
8	91100	O-RING, #2-006, EPDM, 65-75 DURO	PART	1
9	91379	AERATOR KEY	PART	1

D

C

B

A



COPYRIGHT 2005 BRASSTECH, INC. THESE DRAWINGS AND THE DESIGNS DEPICTED HEREIN ARE THE PROPRIETARY PROPERTY OF BRASSTECH. ANY USE OR REPRODUCTION IS SUBJECT TO THE EXPRESS APPROVAL OF BRASSTECH. UNAUTHORIZED USE IS STRICTLY PROHIBITED. ALL RIGHTS RESERVED.

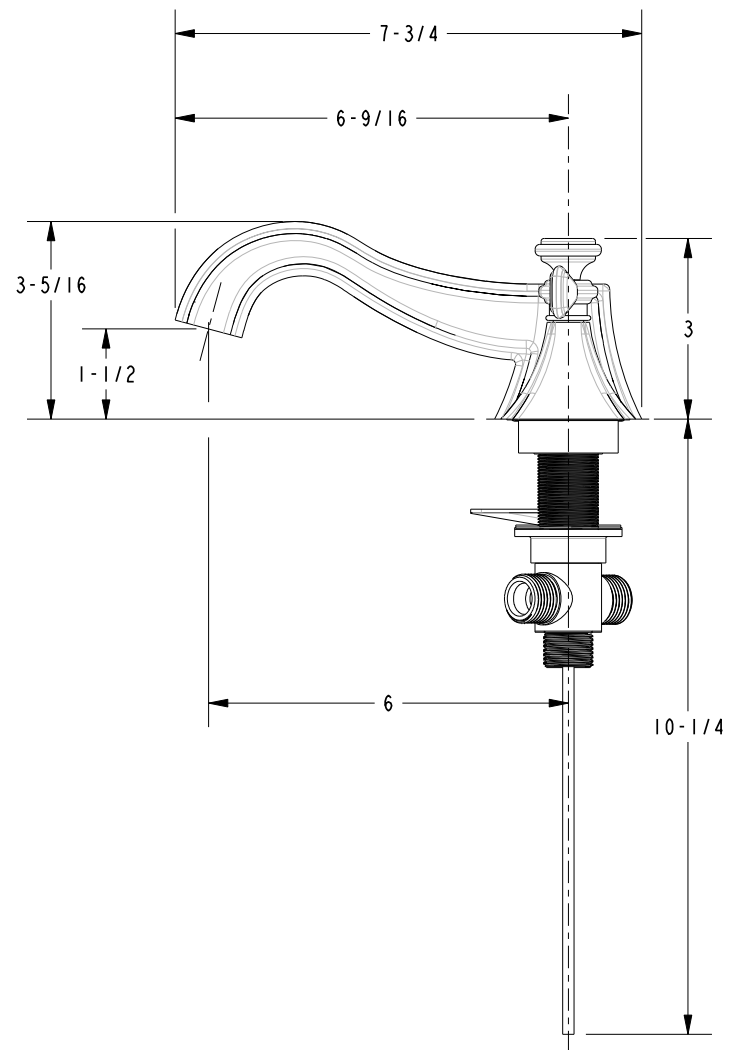
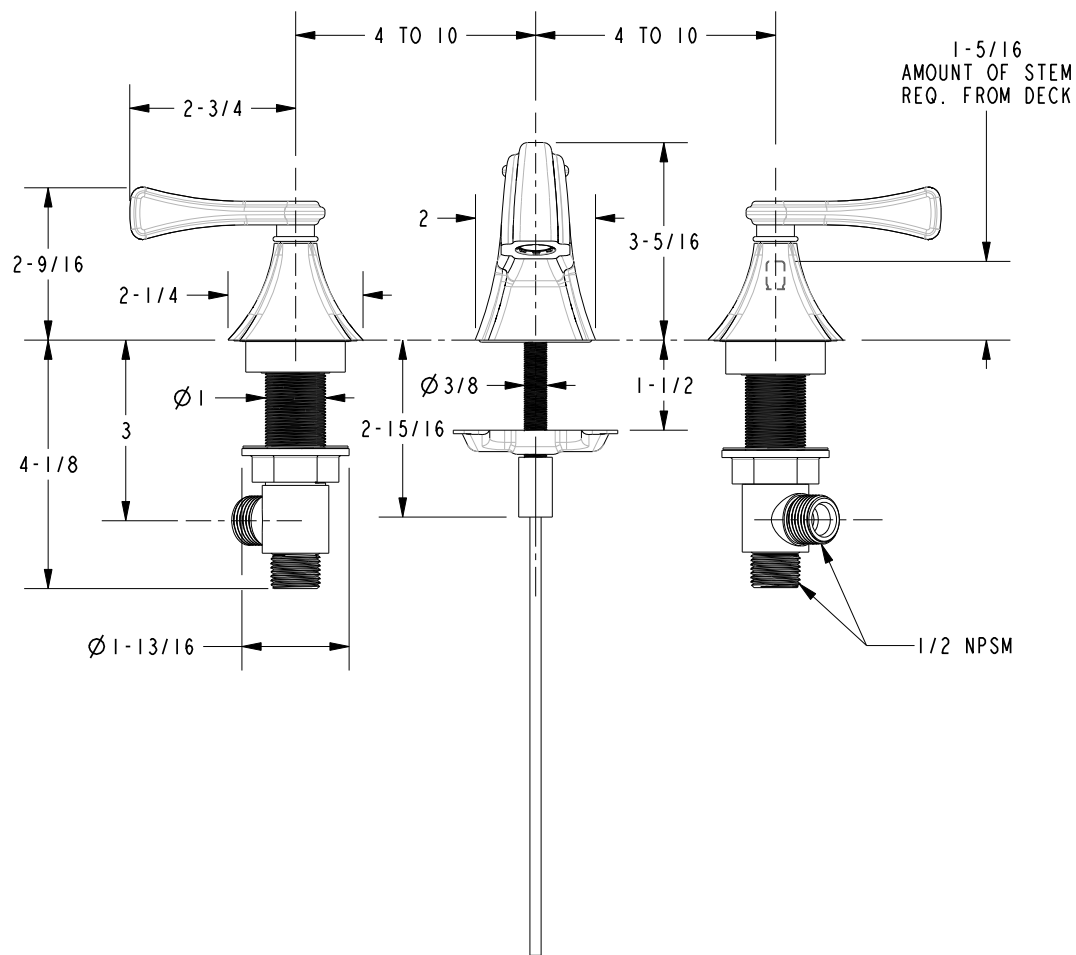
BRASSTECH
INCORPORATED
2001 E. CARNEGIE AVE.
SANTA ANA, CA 92705
(949) 417-5207

W/S LAVATORY FAUCET - LEVER HANDLES

ASSY. NO.	2530	A	EN-2639	11/14/13
SCALE .200	REF. -	SHEET 1 OF 2	REV	REV DESC
				DATE

4 3 2 1

SPECIFICATION DWG



DIMENSIONS ARE IN INCHES AND AN APPROXIMATION OF A TYPICAL INSTALLATION

COPYRIGHT 2005 BRASSTECH, INC. THESE DRAWINGS AND THE DESIGNS DEPICTED HEREIN ARE THE PROPRIETARY PROPERTY OF BRASSTECH. ANY USE OR REPRODUCTION IS SUBJECT TO THE EXPRESS APPROVAL OF BRASSTECH. UNAUTHORIZED USE IS STRICTLY PROHIBITED. ALL RIGHTS RESERVED.

BRASSTECH INCORPORATED		2001 CARNEGIE AVE. SANTA ANA, CA 92705 (949) 417-5207
DWG NO.	2530	REV A
SCALE .313	REF. -	SHEET 2 OF 2